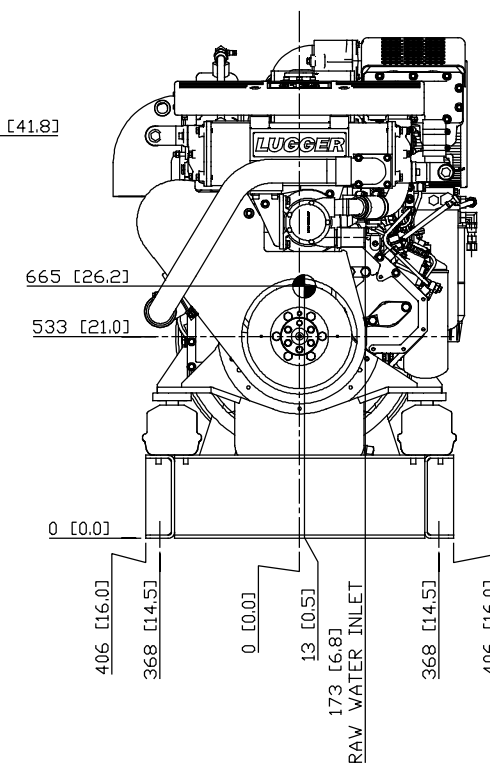
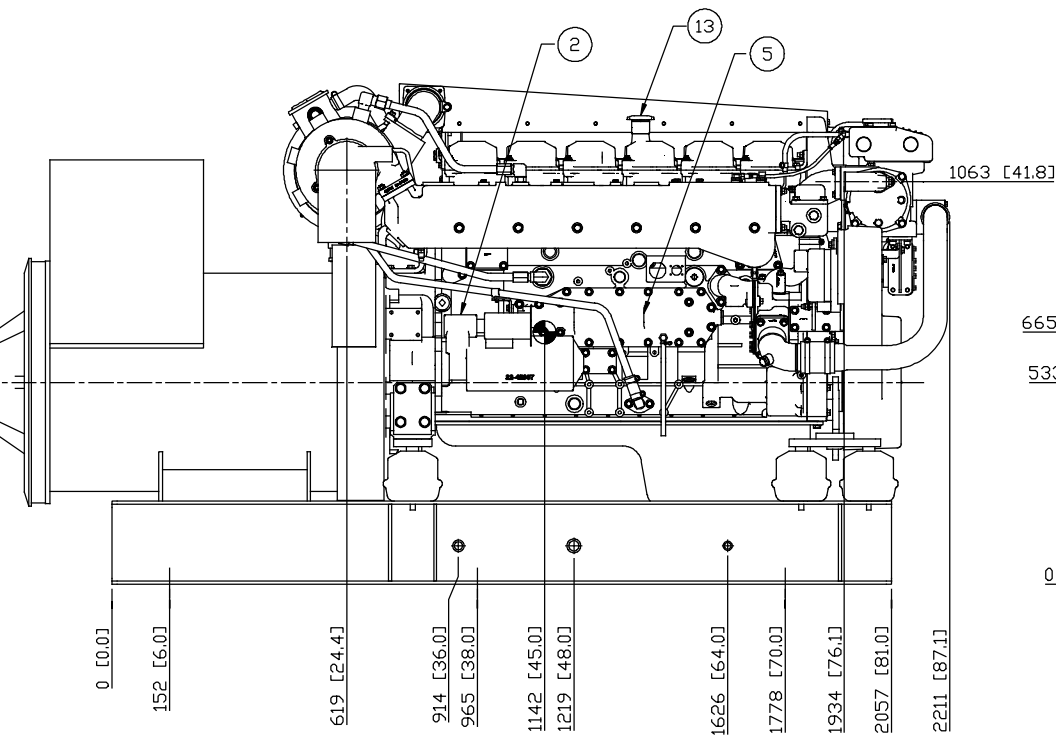
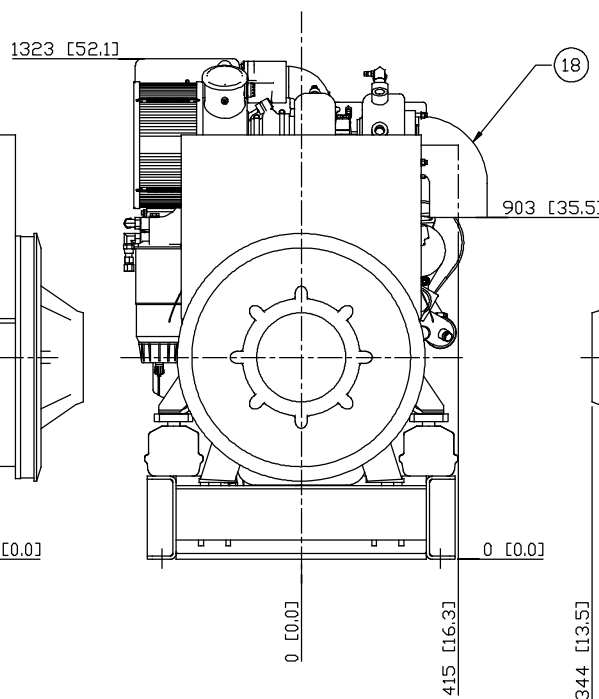
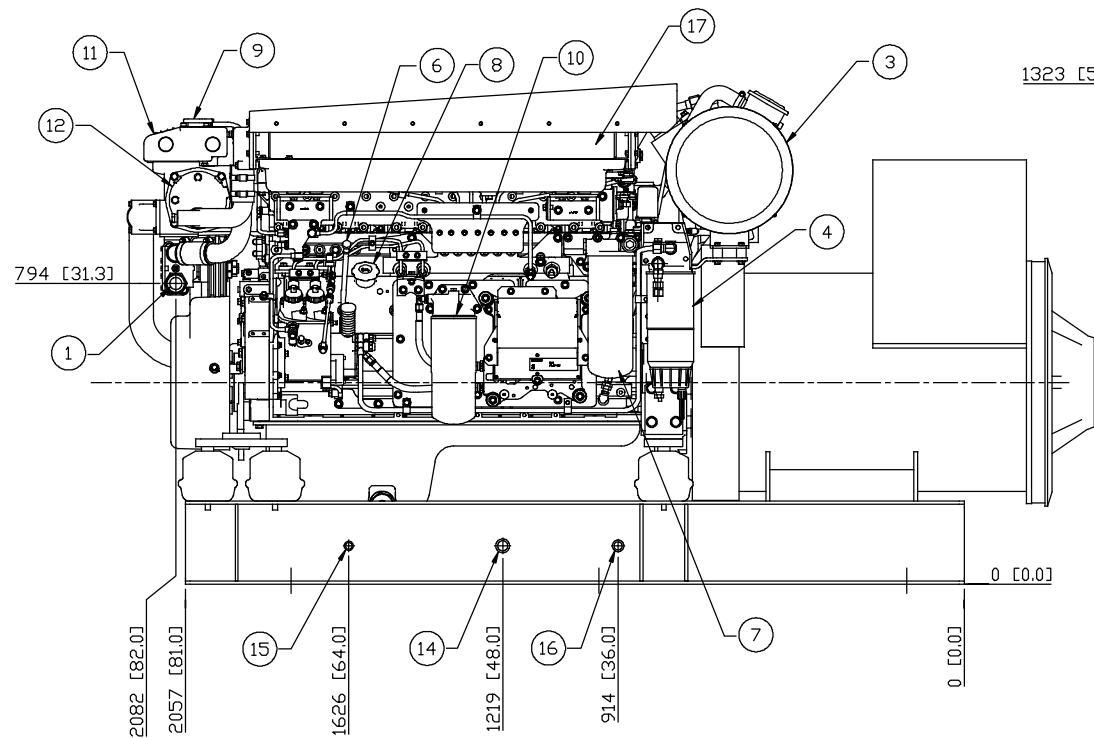
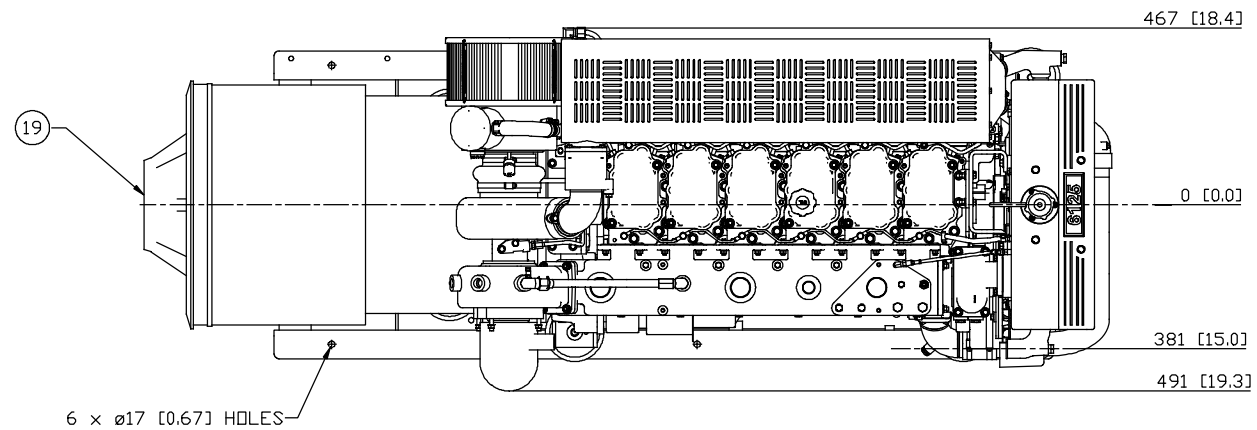


MODELS	APPROX. WT. kg [lbs]
M6125H.11 1800 RPM 60Hz 250KW 3PH	2449 [5400]
M6125H.51 1500 RPM 50Hz 200KW 3PH	2449 [5400]

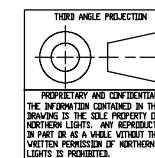
LEGEND		LEGEND	
ITEM	DESCRIPTION	ITEM	DESCRIPTION
1	RAW WATER PUMP INLET (Ø2.0 [Ø50.8] HB)	12	HEAT EXCHANGER
2	24V DC	13	OIL FILL
3	*AIR SEP* AIR INLET FILTER	14	ENGINE OIL DRAIN - 3/4" NPT
4	PRIMARY FUEL FILTER/WATER SEPARATOR	15	FUEL RETURN - 3/8" NPT
5	OIL COOLER	16	FUEL INLET - 1/2" NPT
6	CRANKCASE OIL DIPSTICK	17	AFTERCOOLER
7	CRANKCASE OIL FILTER	18	WET EXHAUST ELBOW - 6" O.D.
8	CRANKCASE OIL FILLER	19	PMG
9	COOLANT FILL	20	
10	FINAL FUEL FILTER	21	
11	EXPANSION TANK	22	

PRELIMINARY



NOTES

1. THE DIMENSIONS ON THIS DRAWING ARE SUBJECT TO CHANGE. PLEASE CONTACT NLI TO BE SURE YOU HAVE THE MOST CURRENT VERSION.



UNLESS OTHERWISE SPECIFIED: DIMENSIONS ARE IN MILLIMETERS TOLERANCES: ANGULAR: MACH ± 0.5° BEND ± 10° X ± 1° INTERPRET GEOMETRIC TOLERANCING FOR ASME Y14.5M FINISH: D: NOT SCALE		NAME: NG DATE: 05/05/11		4420 14th AVE. N.V. Seattle, WA 98107 (206) 789-3880 www.northern-lights.com
PROPRIETARY AND CONFIDENTIAL. THE INFORMATION CONTAINED IN THIS DRAWING IS THE SOLE PROPERTY OF NORTHERN LIGHTS. ANY REPRODUCTION IN PART OR AS A WHOLE WITHOUT THE WRITTEN PERMISSION OF NORTHERN LIGHTS IS PROHIBITED.		DRAWN: _____ CHECKED: _____ ENG APPR: _____ MFG APPR: _____ QA: _____ COMMENTS: _____		TITLE: INSTALLATION DRAWING M6125H MARINE GENERATOR SETS
SIZE: D	PART NO.:	DWG. NO.:	D-4513	REV:
SCALE: 1:10	WEIGHT: SEE TABLE	SHEET 1 OF 1		