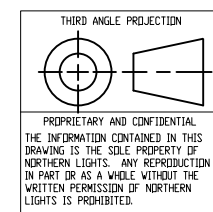


TOTAL WEIGHT, WET:  
 M844LW3: 477 kg [1052 lbs.]  
 (DOES NOT INCLUDE PTD).  
 ADD 31.8 kg [70 lbs.] FOR PTD OPTION.



| REV. | DESCRIPTION  | DATE       | BY  | CHECKED      |
|------|--|------------|-----|--------------|
| A    | DELETE WAVENET OPTION, UPDATE LOGO, FILED UNDER ECN#3566 | 10/15/2015 | LTP | TAH 10/15/15 |

| UNLESS OTHERWISE SPECIFIED                       | NAME      | DATE         |
|--|-----------|--------------|
| DIMENSIONS ARE IN MILLIMETERS                    | DRAWN     | LTP 4/8/2011 |
| TOLERANCES:                                      | CHECKED   |              |
| ANGULAR:   | ENG APPR. |              |
| MACH ± 0.5° BEND ± 1.0°                          | MFG APPR. |              |
| TWO PLACE DECIMAL ± 0.5                          | D.A.      |              |
| THREE PLACE DECIMAL ± 0.3                        | COMMENTS: |              |
| INTERPRET GEOMETRIC TOLERANCING PER: ASME Y14.5M |           |              |
| MATERIAL:  |           |              |
| FINISH:  |           |              |
| APPLICATION:                                     |           |              |
| DO NOT SCALE DRAWING                             |           |              |

**NORTHERN LIGHTS**

4420 14th AVE. N.W.  
 Seattle, WA 98107  
 (206) 789-3880  
 www.northern-lights.com

TITLE:  
 INSTALLATION DIMENSIONS  
 NLI P/N: 05-70010  
 M844LW3 SOUND SHIELD

SIZE DWG. NO. REV  
 C C-6860 A

SCALE: 1:10 WEIGHT: SHEET 1 OF 1

THE DIMENSIONS ON THIS DRAWING ARE SUBJECT TO CHANGE. PLEASE CONTACT NORTHERN LIGHTS INC TO BE SURE YOU HAVE THE MOST CURRENT REVISION.