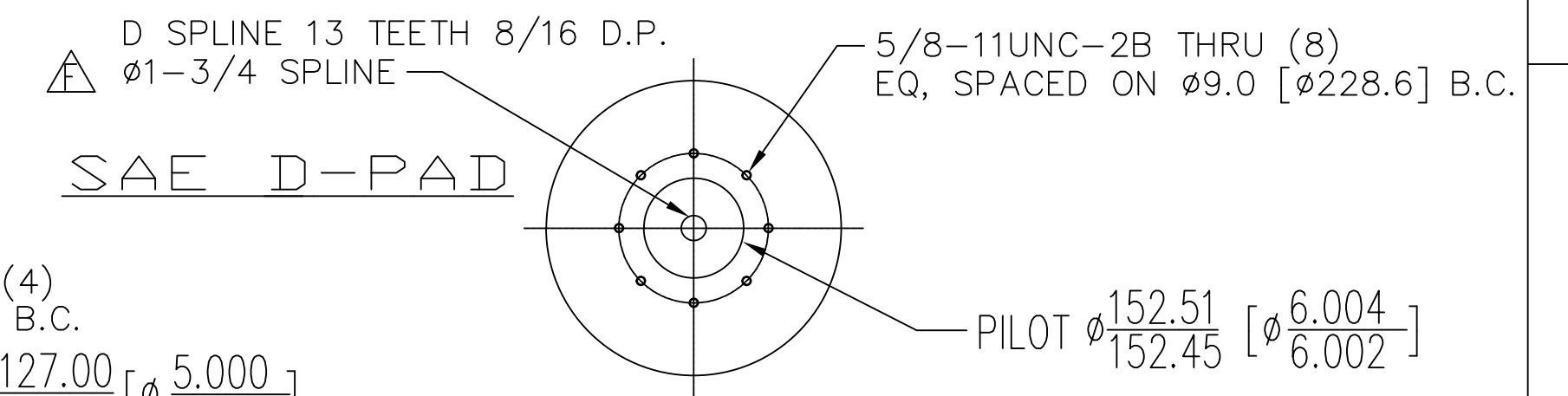
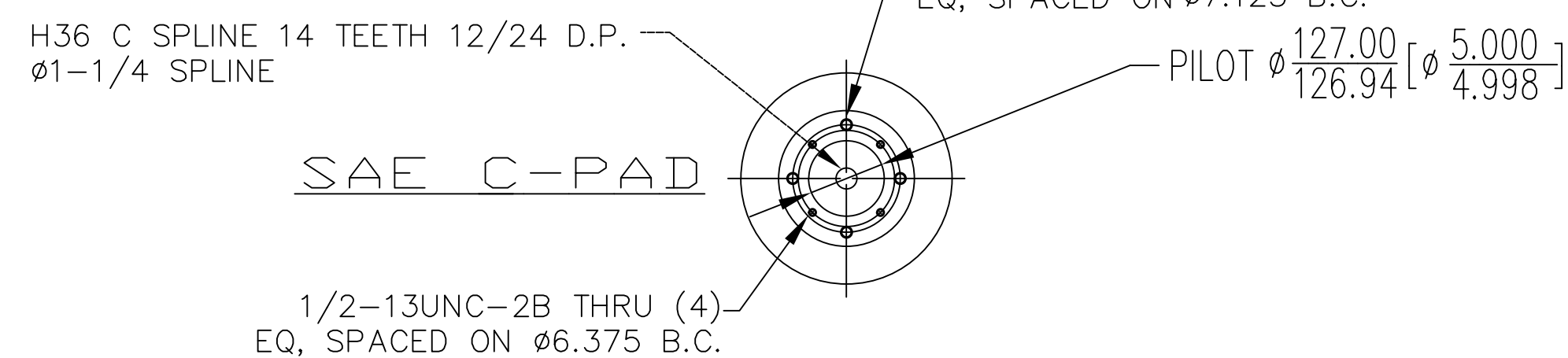
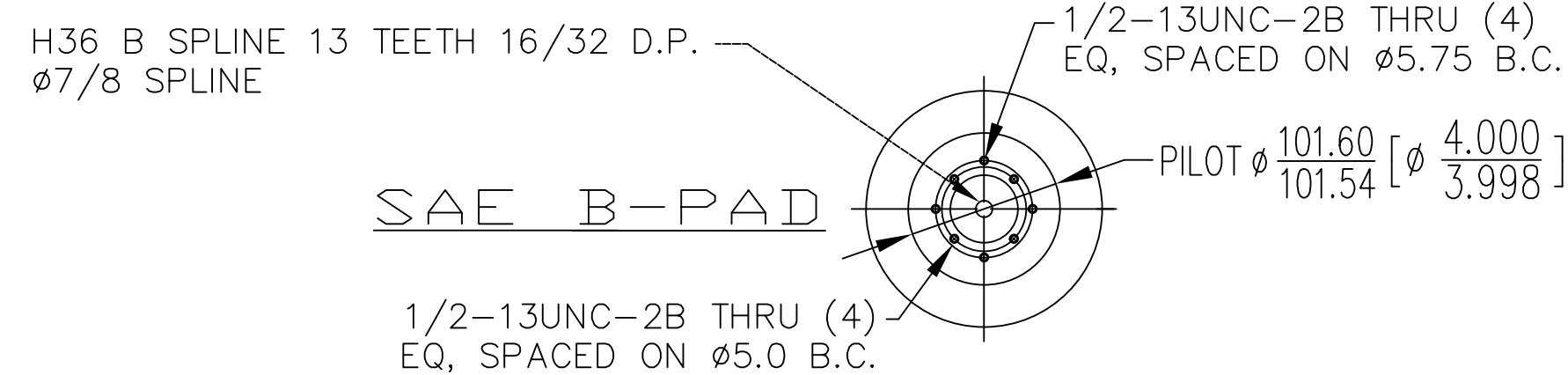
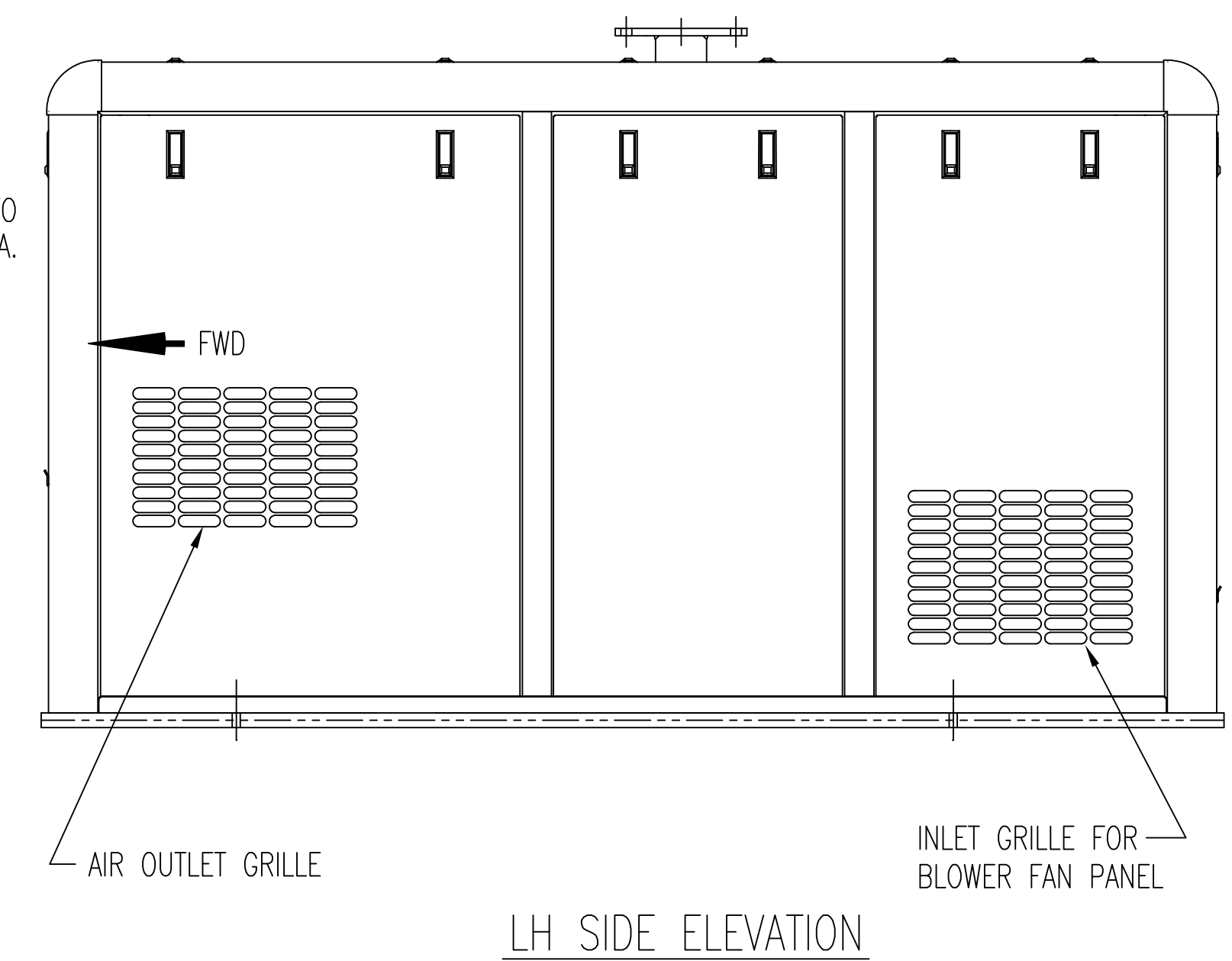
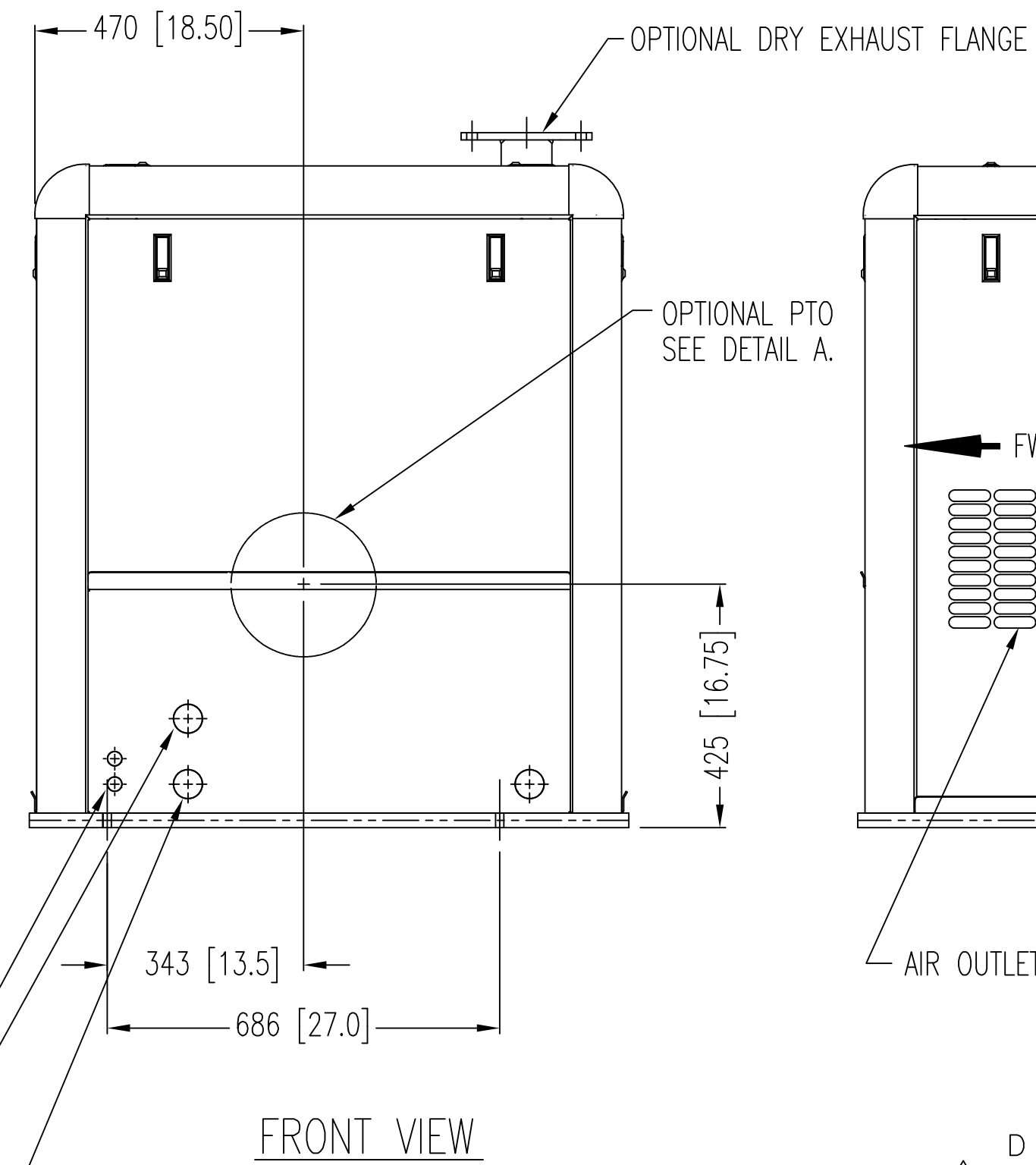
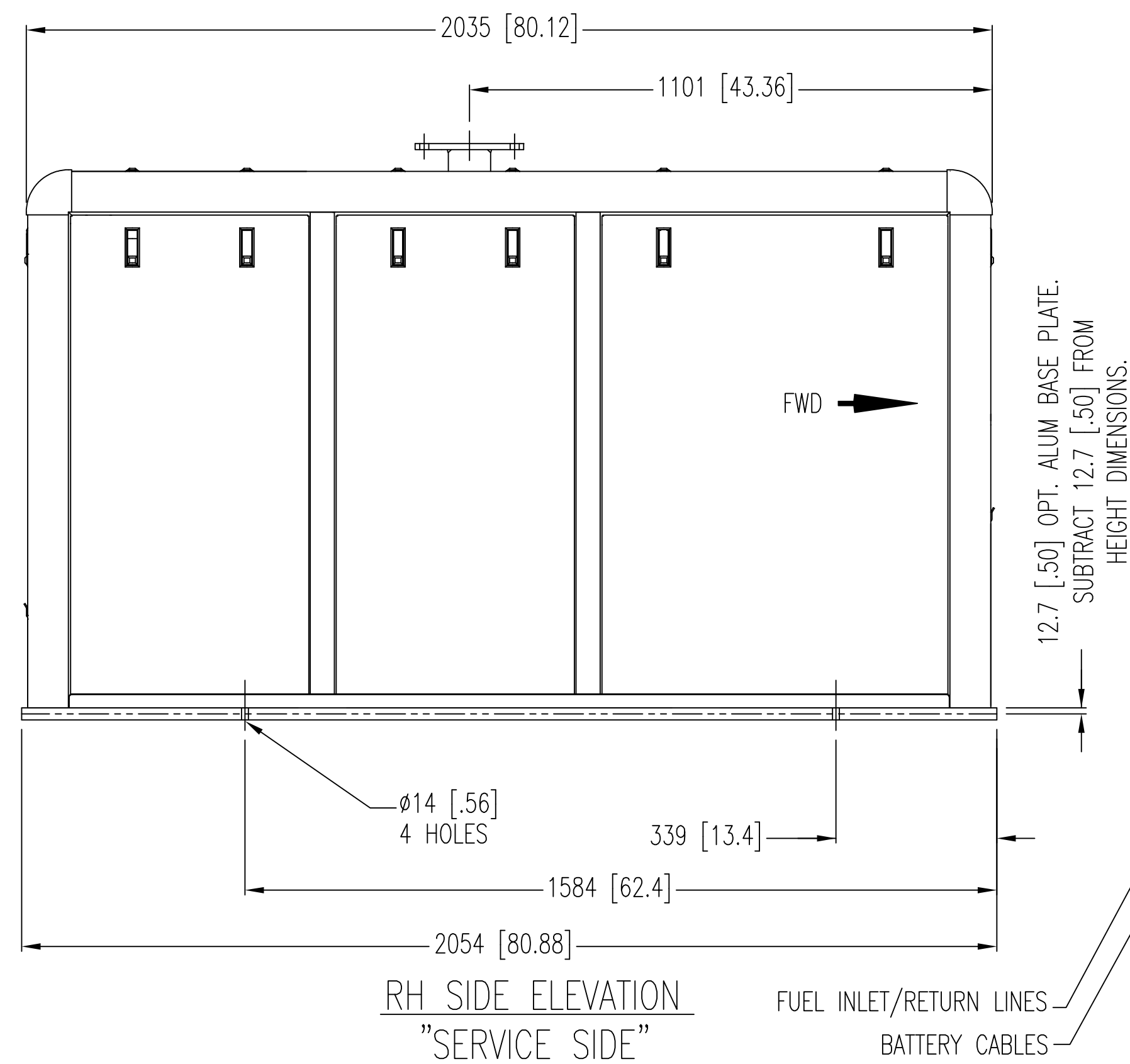
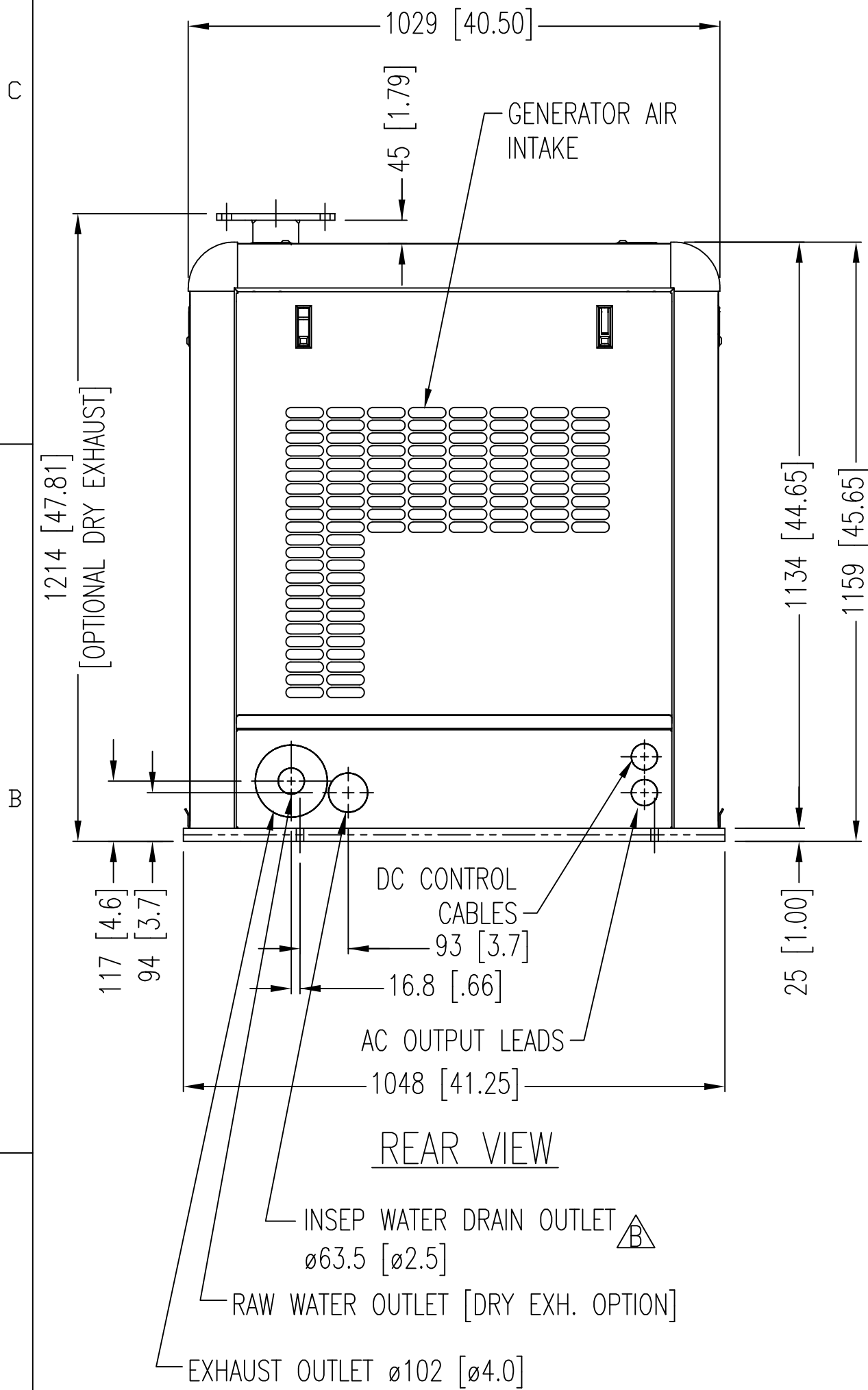


NOTE:
 1) THIS SHIELD IS PART NUMBER 05-79430, WHICH IS THE BASIS FOR ALL OF THE MODELS SHOWN LISTED TO THE RIGHT.
 2) THE FINAL ACTUAL SHIELD PART NUMBER MAY VARY DEPENDING UPON APPLICATION AND INTERNAL EQUIPMENT, BUT THE DIMENSIONS SHALL REMAIN CONSISTENT.
 3) SAE B PAD (H-36 CLUTCH) PTO IS ONLY AVAILABLE ON M1064D AND M1064T1 APPLICATIONS.

SOUND SHIELD APPLICATION	
M1064D.11	1800 RPM 60Hz 40kw 3φ
M1064D.31	1800 RPM 60Hz 40kw 1φ
M1064D.51	1500 RPM 50Hz 33kw 3φ
M1064D.71	1500 RPM 50Hz 33kw 1φ
M1064T1.11	1800 RPM 60Hz 55kw 3φ
M1064T1.31	1800 RPM 60Hz 55kw 1φ
M1064T1.51	1500 RPM 50Hz 50kw 3φ
M1064T1.71	1500 RPM 50Hz 50kw 1φ
M1064T2.11	1800 RPM 60Hz 65kw 3φ
M1064T2.31	1800 RPM 60Hz 65kw 1φ
M1064T2.51	1500 RPM 50Hz 55kw 3φ
M1064T2.71	1500 RPM 50Hz 55kw 1φ
M1064A.11	1800 RPM 60Hz 92kw 3φ
M1064A.51	1500 RPM 50Hz 67kw 3φ
M1064H.11	1800 RPM 60Hz 99kw 3φ
M1064H.51	1500 RPM 50Hz 90kw 3φ

WEIGHT (SHIELD ONLY): 298 kg [657 lbs.] w/PLYWOOD BASE PLATE.
 345.5 kg [762 lbs.] w/ALUM BASE PLATE.



THE DIMENSIONS ON THIS DRAWING ARE SUBJECT TO CHANGE PLEASE CONTACT NORTHERN LIGHTS TO BE SURE YOU HAVE THE MOST CURRENT REVISION.

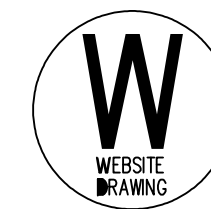
SYMBOL	DATE	REVISIONS	BY	CHECKED
F	3/20/03	D-SPLINE SHWT DIA WAS INCORRECTLY CALLED OUT AT 1.5" FILED UNDER ECONOMAT.	LTP	MS 3/20/03
E	3/26/03	ADDED D-SPLINE PTO DATA, ALUM BASE PLATE DATA, WEIGHT.	LTP	
D	5/20/06	CORRECTED SUPPLY WIRING FOR NORMALS AND REWIND, ADDED NOTE THREE.	LTP	
C	4/4/05	ADJUSTED VESH VALUES	LTP	
B	7/6/04	ADDED REFERENCE FOR "INSEP WATER DRAIN OUTLET"	LTP	
A	3/25/04	UPDATED PANEL CONFIGURATION	LTP	

TOLERANCES UNLESS OTHERWISE SPECIFIED:
 .XX: ±.01
 .XXX: ±.005
 ANGULAR: ±1.0

CAD CHECKED: LTP 3/2/04
 THIRD ANGLE PROJECTION
 SHEETS: 1 OF 1
 UNITS OF MEASURE: XX

NORTHERN LIGHTS
 4420 14th AVE. N.W.
 Seattle, WA 98107
 (206) 789-3880
 www.northern-lights.com

REVISIONS: 05-79430 D-3690 REV: F



DETAIL A