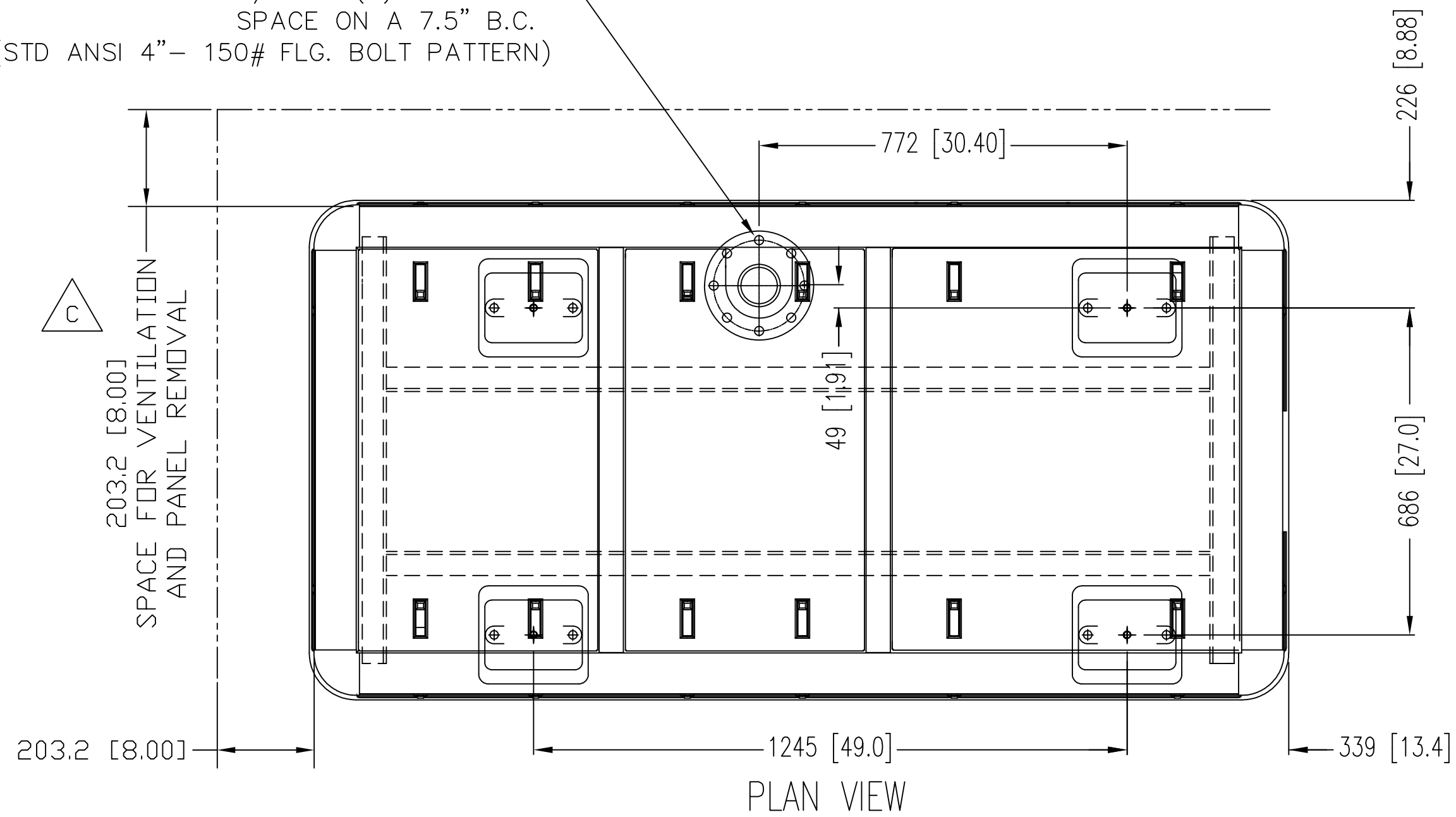


3/4" DIA (8) HOLES EQ
SPACE ON A 7.5" B.C.
(STD ANSI 4"- 150# FLG. BOLT PATTERN)

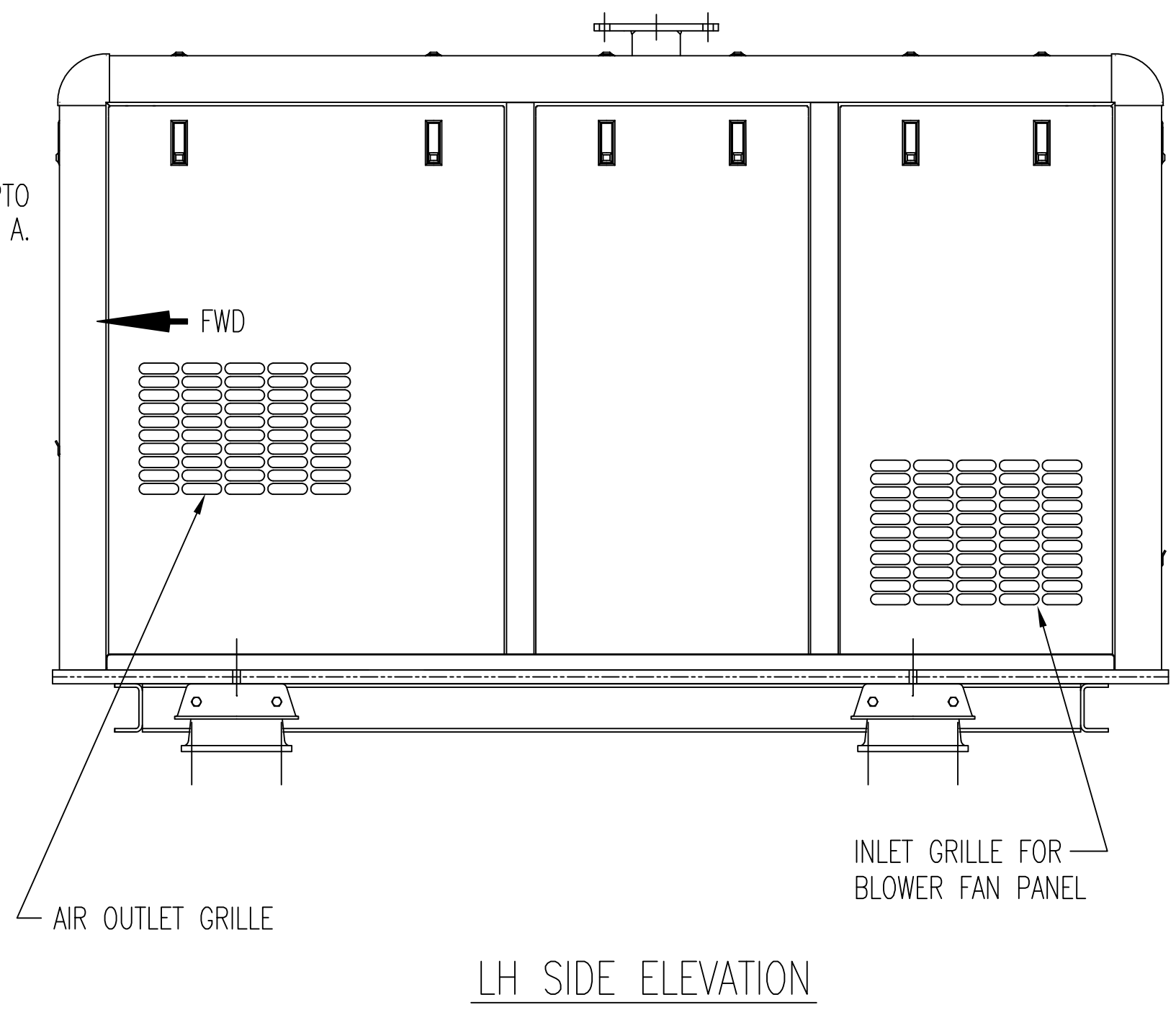
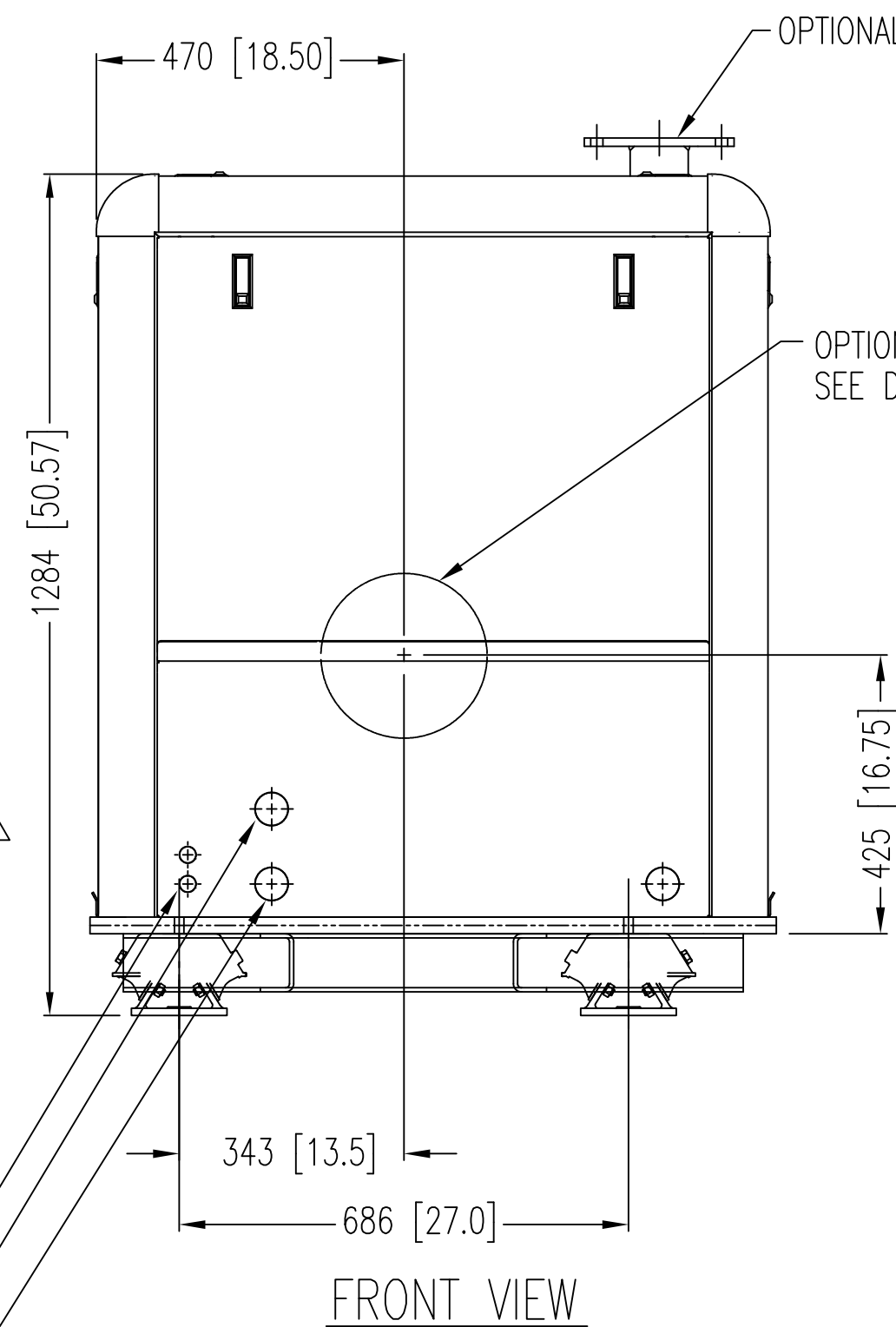
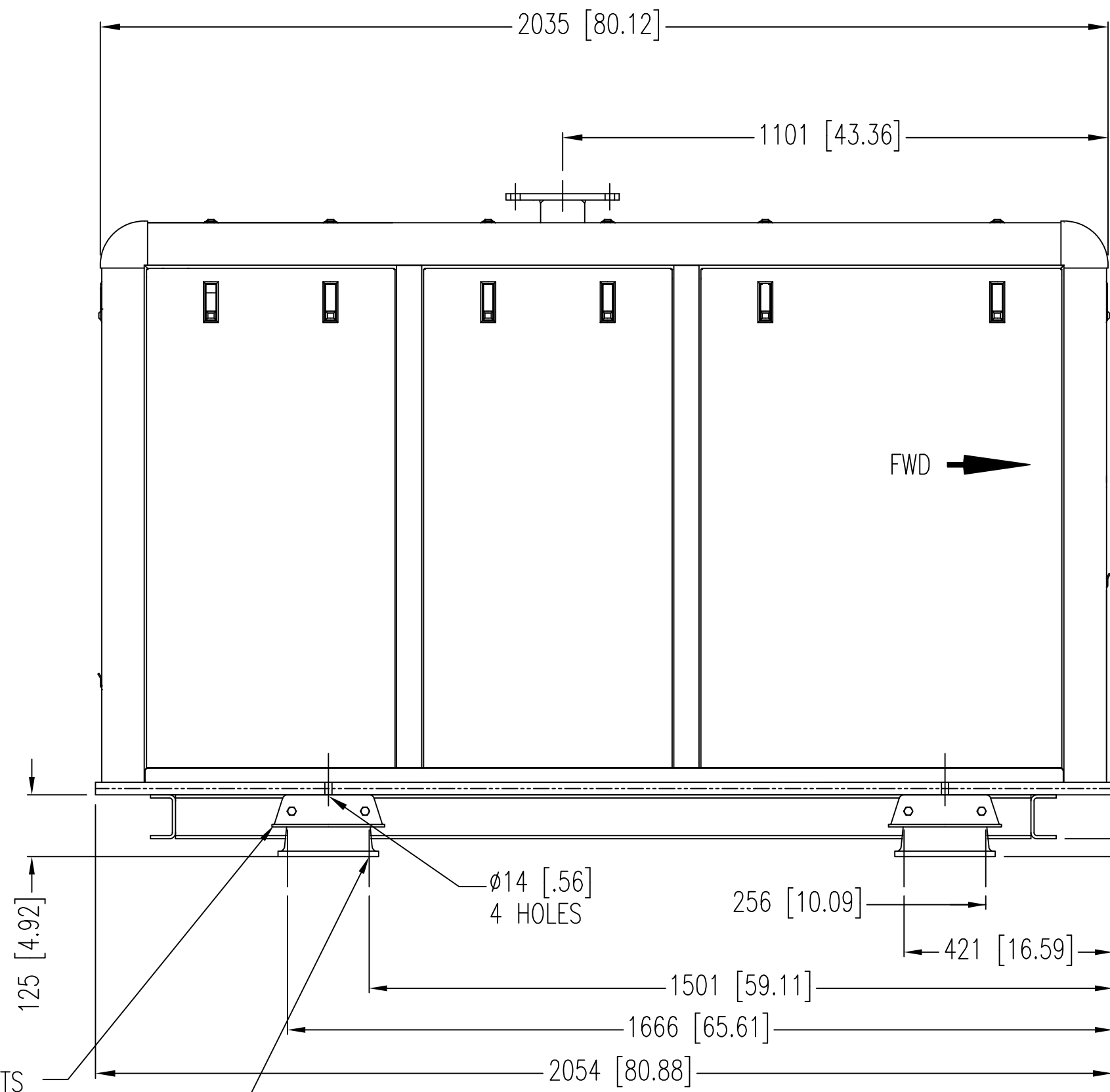
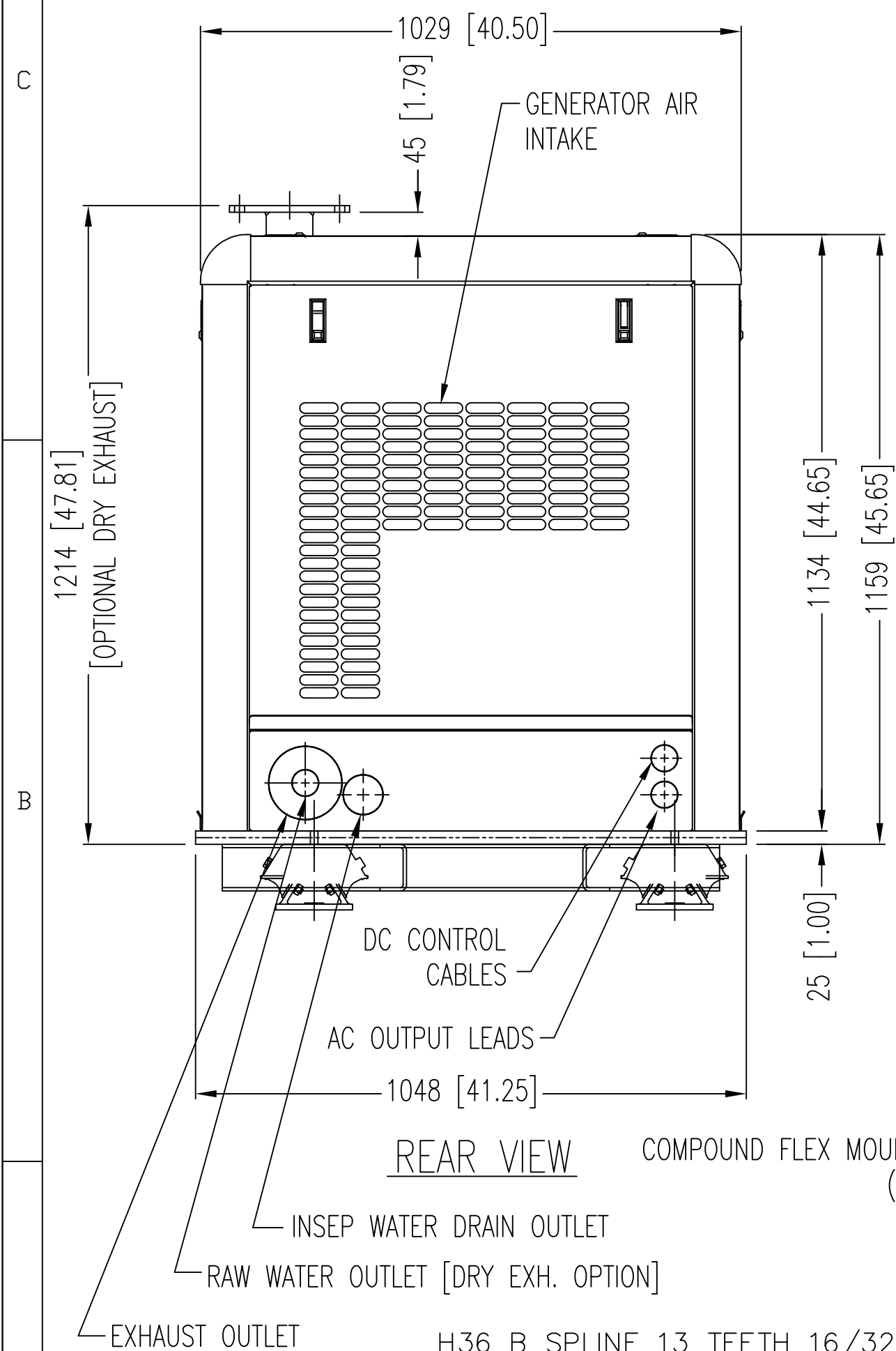


NOTE:
1) THIS SHIELD IS PART NUMBER 05-79430, WHICH IS THE BASIS FOR ALL OF THE MODELS SHOWN LISTED TO THE RIGHT.
2) THE FINAL ACTUAL SHIELD PART NUMBER MAY VARY DEPENDING UPON APPLICATION AND INTERNAL EQUIPMENT, BUT THE DIMENSIONS SHALL REMAIN CONSISTENT.
3) SAE B PAD (H-36 CLUTCH) PTO IS ONLY AVAILABLE ON M1064D AND M1064T1 APPLICATIONS.

SOUND SHIELD APPLICATION

M1064D.11	1800 RPM	60Hz	40kw	3φ
M1064D.31	1800 RPM	60Hz	40kw	1φ
M1064D.51	1500 RPM	50Hz	33kw	3φ
M1064D.71	1500 RPM	50Hz	33kw	1φ
M1064T1.11	1800 RPM	60Hz	55kw	3φ
M1064T1.31	1800 RPM	60Hz	55kw	1φ
M1064T1.51	1500 RPM	50Hz	50kw	3φ
M1064T1.71	1500 RPM	50Hz	50kw	1φ
M1064T2.11	1800 RPM	60Hz	65kw	3φ
M1064T2.31	1800 RPM	60Hz	65kw	1φ
M1064T2.51	1500 RPM	50Hz	55kw	3φ
M1064T2.71	1500 RPM	50Hz	55kw	1φ
M1064A.11	1800 RPM	60Hz	92kw	3φ
M1064A.51	1500 RPM	50Hz	67kw	3φ
M1064H.11	1800 RPM	60Hz	99kw	3φ
M1064H.51	1500 RPM	50Hz	90kw	3φ

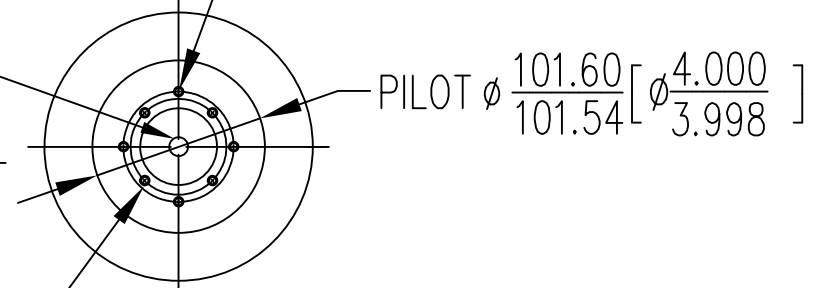
△ C WEIGHT (EMPTY): 330 kg [729 lbs.] w/PLYWOOD BASE PLATE.
378 kg [834 lbs.] w/ALUM BASE PLATE.
INCLUDES FULL SOUND FOAM, STIFFENER FRAME AND COMPOUND MOUNTS.



H36 B SPLINE 13 TEETH 16/32 D.P.
φ7/8 SPLINE

SAE B-PAD

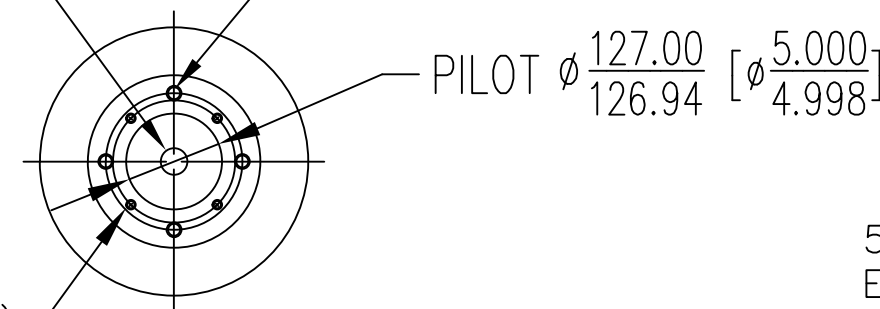
1/2-13UNC-2B THRU (4)
EQ, SPACED ON φ5.0 B.C.



H36 C SPLINE 14 TEETH 12/24 D.P.
φ1-1/4 SPLINE

SAE C-PAD

1/2-13UNC-2B THRU (4)
EQ, SPACED ON φ6.375 B.C.

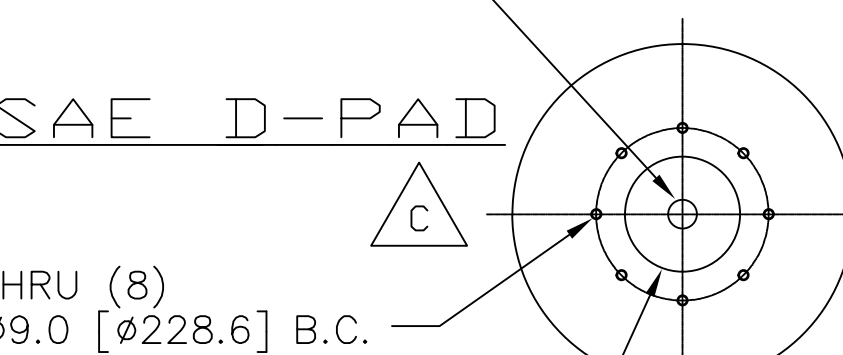


φ7/8 SPLINE
5/8-13UNC-2B THRU (4)
EQ, SPACED ON φ7.125 B.C.

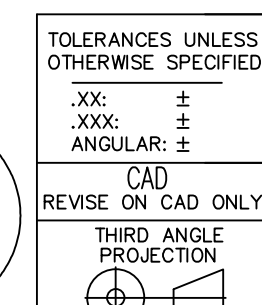
△ D D SPLINE 13 TEETH 8/16 D.P.
φ1-3/4 SPLINE

SAE D-PAD

5/8-11UNC-2B THRU (8)
EQ, SPACED ON φ9.0 [φ228.6] B.C.



THE DIMENSIONS ON THIS DRAWING ARE SUBJECT TO CHANGE PLEASE CONTACT NORTHERN LIGHTS TO BE SURE YOU HAVE THE MOST CURRENT REVISION.



NO.	DATE	DESCRIPTION	BY	CHECKED
D	3/20/2011	D-SPLINE SHFT DIA INCORRECT AT 12" FILED UNDER EDWARDS	LTP	MS 3/21/2011
C	5/16/09	ADDED D-SPLINE PTO DATA, ALUM BASE PLATE DIMS AND WEIGHTS	LTP	
B	5/05/08	CORRECTED OUTPUT RATING FOR M1064H AND M1064H, ADDED NOTE THREE	LTP	
A	4/15/08	UPDATED COMPOUND HEAT STIFFENER, WAS 30" TALL	LTP	

TOLERANCES UNLESS OTHERWISE SPECIFIED	XXX: ±	XX: ±	ANGULAR: ±
CAD	LTP	4/4/05	TITLE:
REVISION ON CAD ONLY	CHECKED:		SCALE: 1:5
THIRD ANGLE PROJECTION	RELEASED:		SHEETS: 1 OF 1
			UNITS OF MEASURE: XX

4420 14th AVE. N.W.
Seattle, WA 98107
(206) 789-3880
www.northern-lights.com

NORTHERN LIGHTS

SOUND SHIELD INSTALLATION DRAWING
M1064 with INSEP and COMPOUND MOUNTS

DWG NO: D-3938 REV'D