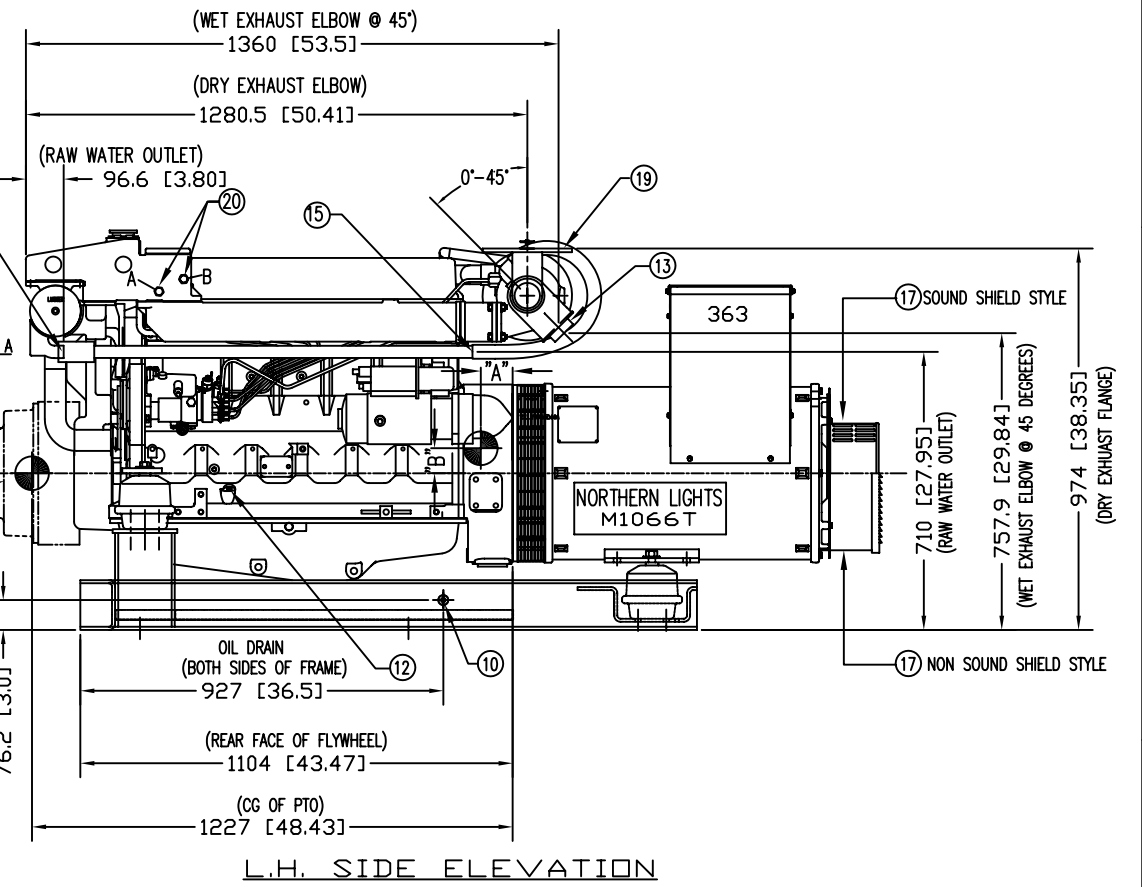
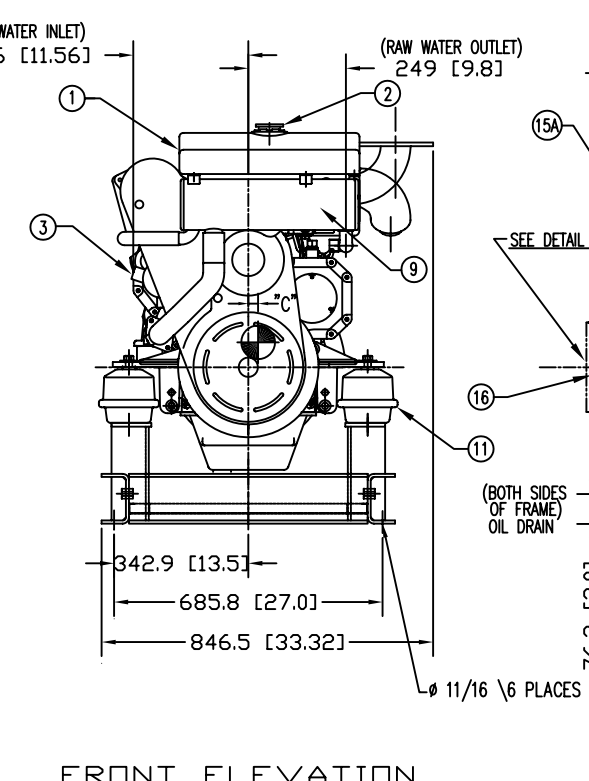
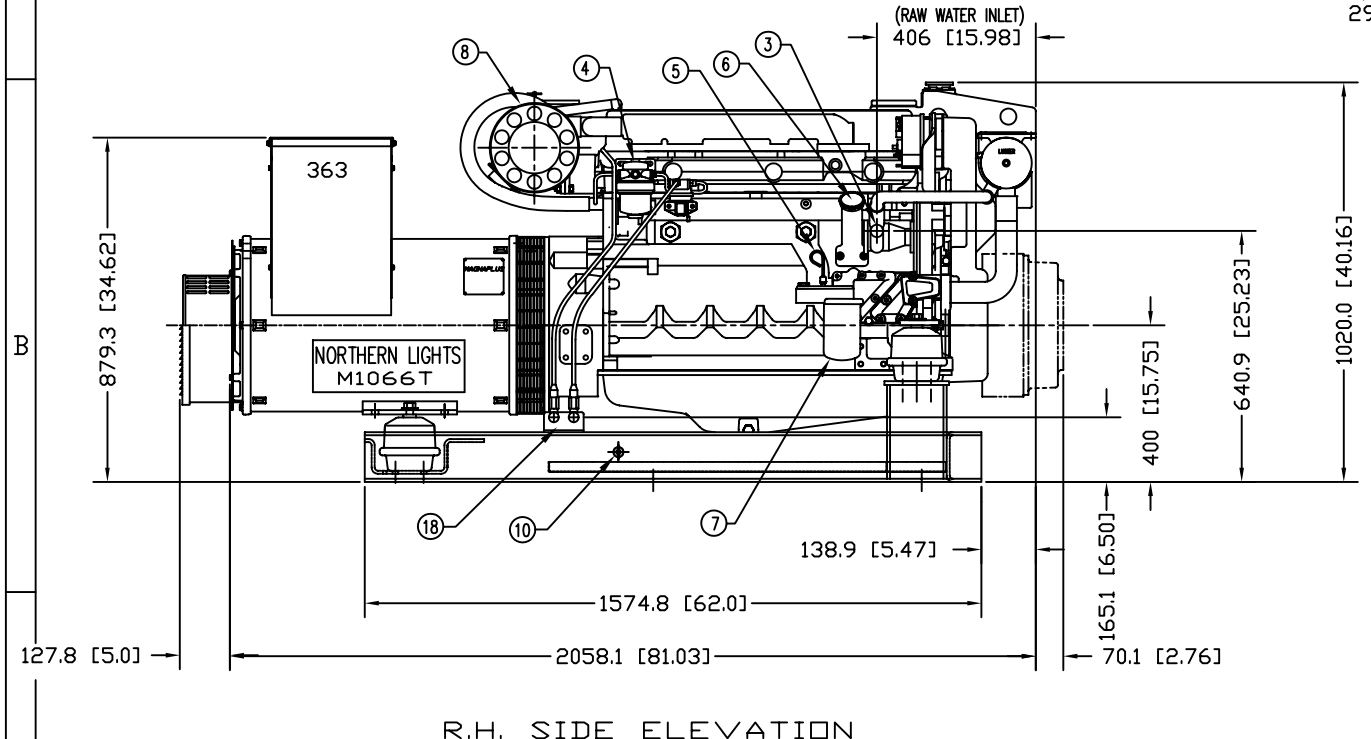
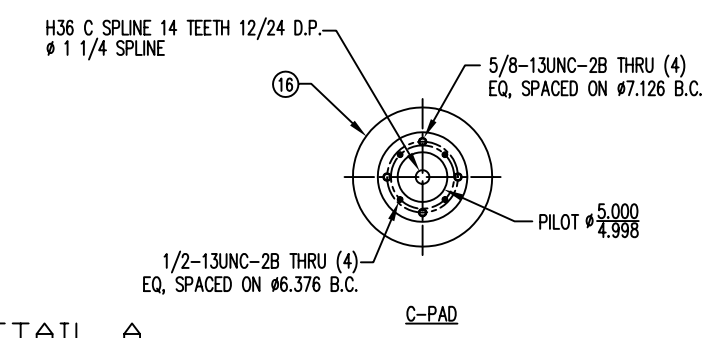
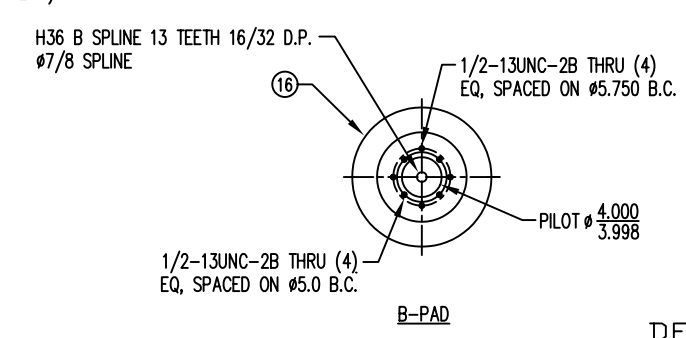
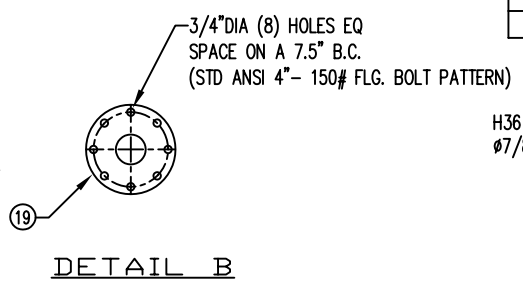
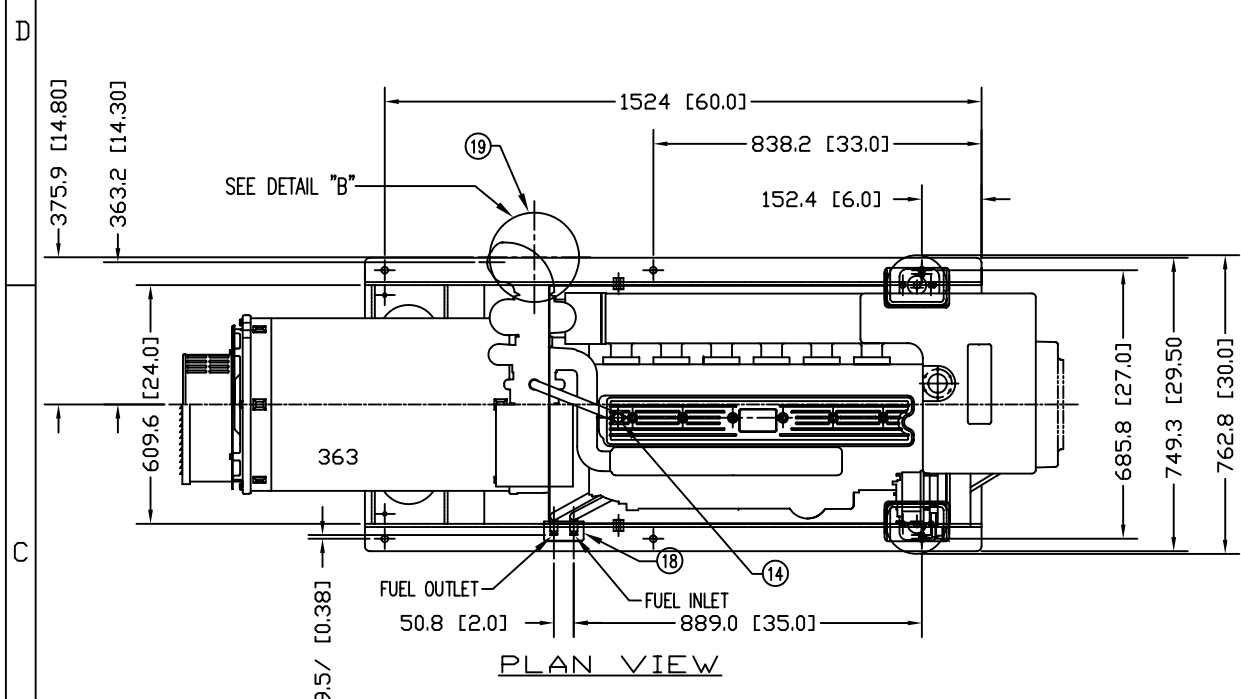


MODELS	APPROX WT. lbs (kg)	CENTER OF GRAVITY		
		A	B	C
M1066T 1800 RPM 60Hz 99kw 3φ	1265.9 kg (2791 lbs.)	7.44 (189)	38 [1.5]	24 [.90]
M1066T 1500 RPM 50Hz 80kw 3φ	1265.9 kg (2791 lbs.)	7.44 (189)	38 [1.5]	24 [.90]

NOTE:
 1) CENTER OF GRAVITY VALUES DO NOT INCLUDE PTO/CLUTCH ASSY.
 2) PTO ADAPTER/CLUTCH ASSY (ONLY) WEIGHS APPROX. 96lbs (43.5 kg)
 3) CUSTOMER MUST RECALCULATE CG FOR ADDITION OF HYDRAULIC PUMP.

LEGEND	
ITEM	DESCRIPTION
1	EXPANSION TANK
2	COOLANT FILL
3	RAW WATER PUMP INLET (#1.25 [31.8])
4	FUEL FILTER
5	CRANKCASE OIL DIPSTICK
6	CRANKCASE OIL FILLER
7	CRANKCASE OIL FILTER
8	AIR INLET FILTER
9	HEAT EXCHANGER
10	ENGINE OIL DRAIN 1/2" NPT
11	HYDROLASTIC MOUNT
12	ALTERNATE DIPSTICK LOCATION (OPTION)
13	4" WET EXHAUST ELBOW (OPTION)
14	CLOSED CRANKCASE VENTILATION SYSTEM
15	RAW WATER OUTLET TUBE (#1.25"[31.8]) - WET EXHAUST.
15A	RAW WATER OUTLET (#1.25"[31.8]) - DRY EXHAUST.
16	PTO/CLUTCH STD MTG FACE, SAE J744C, B OR C OR 2 OR 4 BOLT (OPTION)
17	PMG COVER (OPTION, BOTH STYLES SHOWN)
18	FUEL INLET / RETURN (3/8"NPT)
19	DRY EXHAUST ELBOW 4" 150# STD. FLG. (OPTION)
20	CONNECTION FOR WATER HEATER B= HOT WATER OUT A= RETURN TO ENGINE.



THE DIMENSIONS ON THIS DRAWING ARE SUBJECT TO CHANGE PLEASE CONTACT ADE TO BE SURE YOU HAVE THE MOST CURRENT REVISION.



SYMBOL	DATE	DESCRIPTION	BY	CHECKED
DRAWN:	LTP	12/19/08		
CHECKED:				
APPROVED:				
SCALE:	1:10 (.1" = 1")			
RELEASED:				
SHEETS:	1 OF 1			
UNITS OF MEASURE:	MM [inch]			
REVISE ON CAD ONLY				

NORTHERN LIGHTS
 4420 14th AVE. N.W.
 SEATTLE, WA 98107 (206) 789-3880

TITLE:
 INSTALLATION DIMENSIONS
 M1066T / 363PSL / 3φ / 60/50 Hz / H.E./HYDROLASTIC MT.

P/N:
 SEE TABLE

DWG. NO.:
 D-4337

REV.: