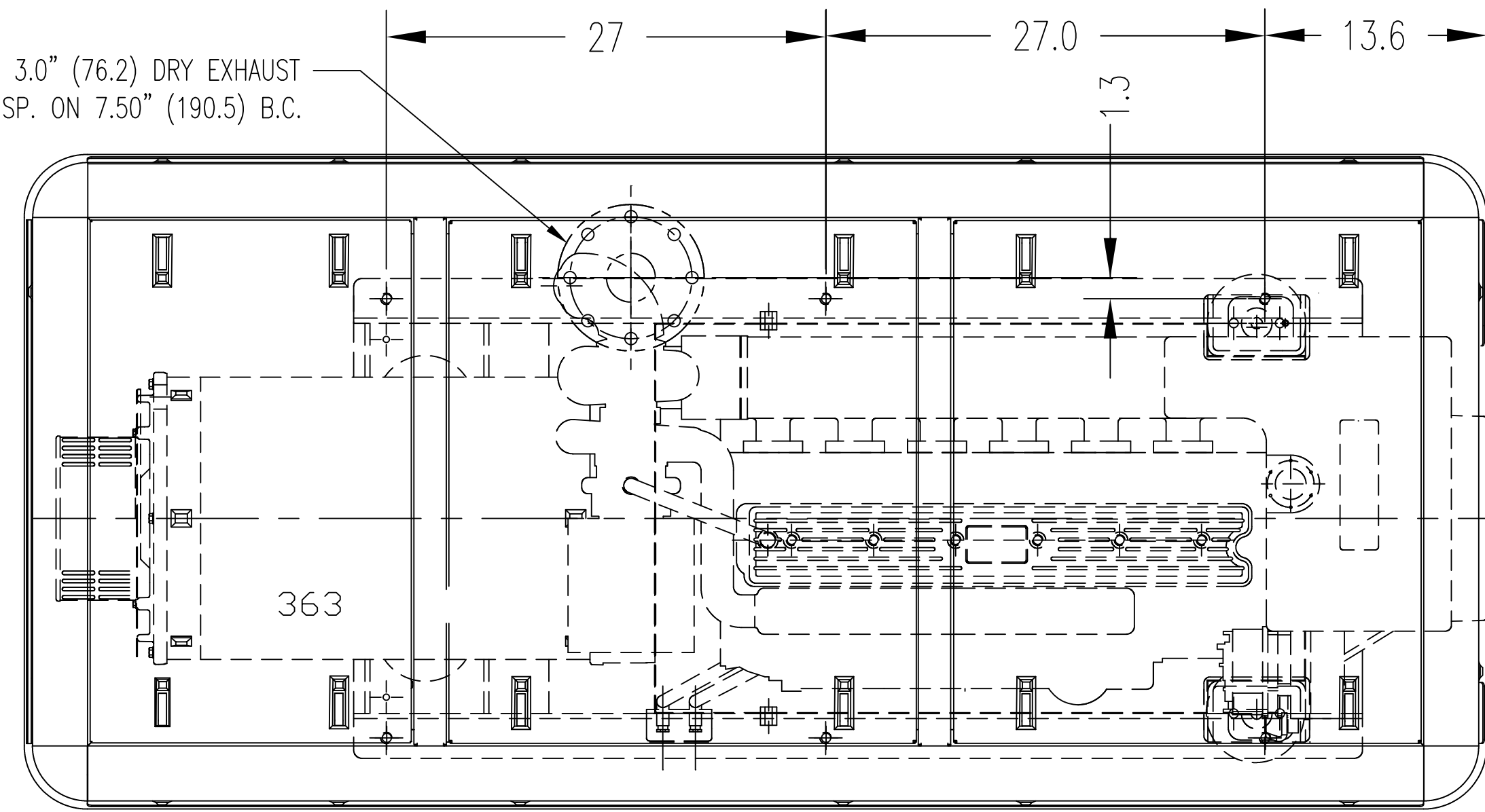


SOUND SHIELD APPLICATION

MODEL	kW	PHASE	RPM	Hz
M1066T/363	99	3Ø	1800	60
M1066T/363	80	3Ø	1500	50

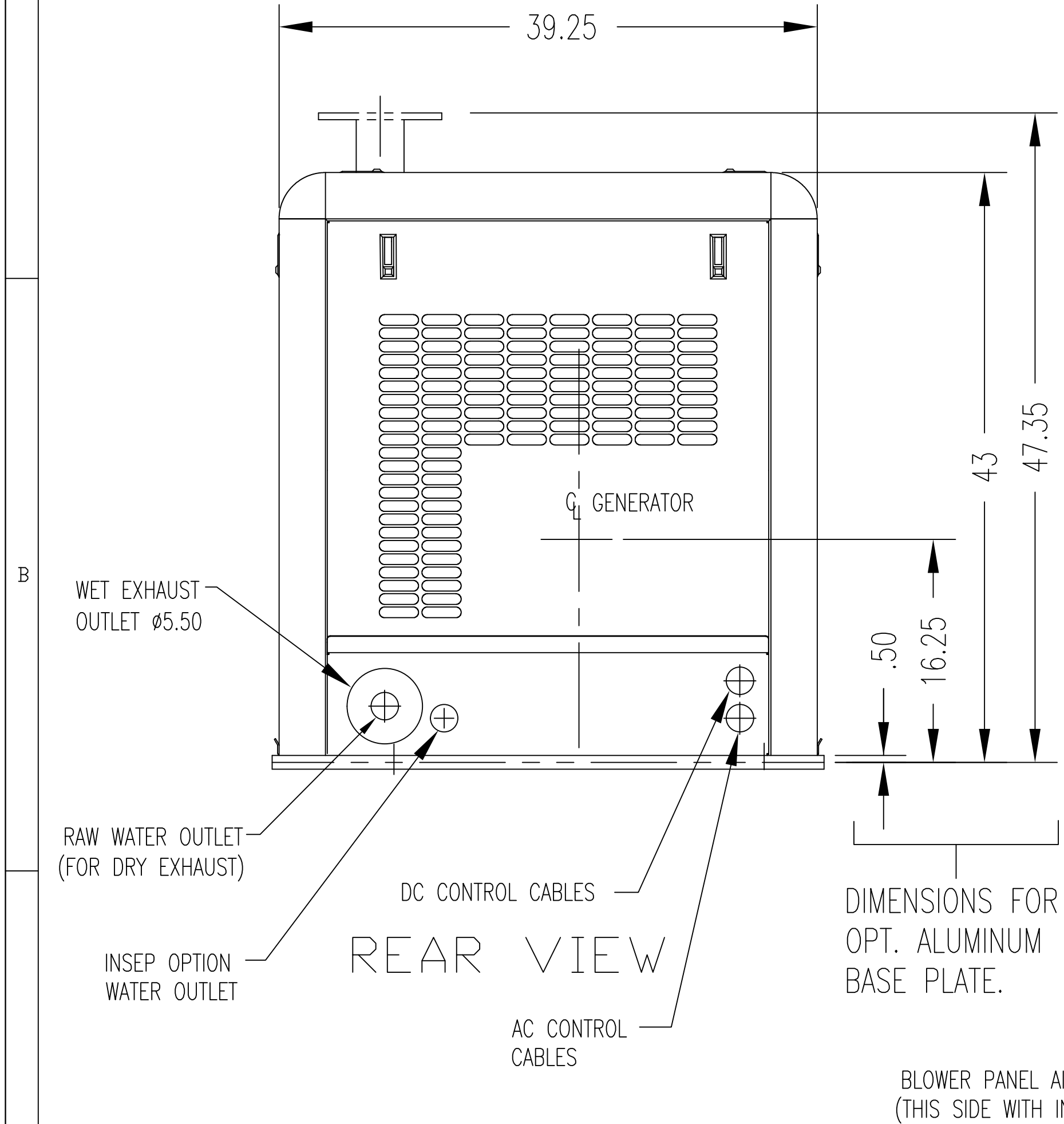
OPTIONAL 3.0" (76.2) DRY EXHAUST
.63" Ø (16.0Ø) EQ. SP. ON 7.50" (190.5) B.C.



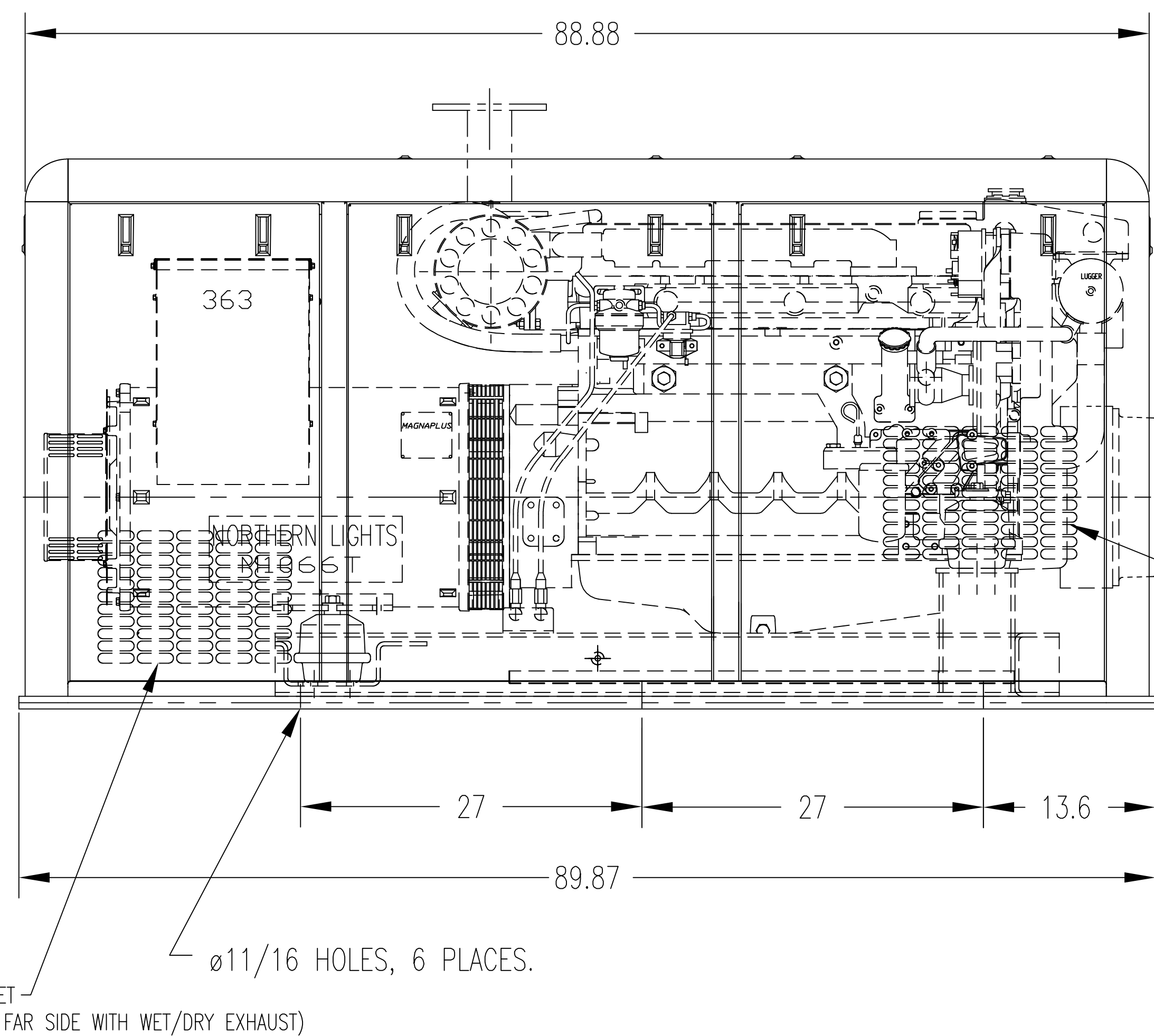
PLAN VIEW

NOTES:

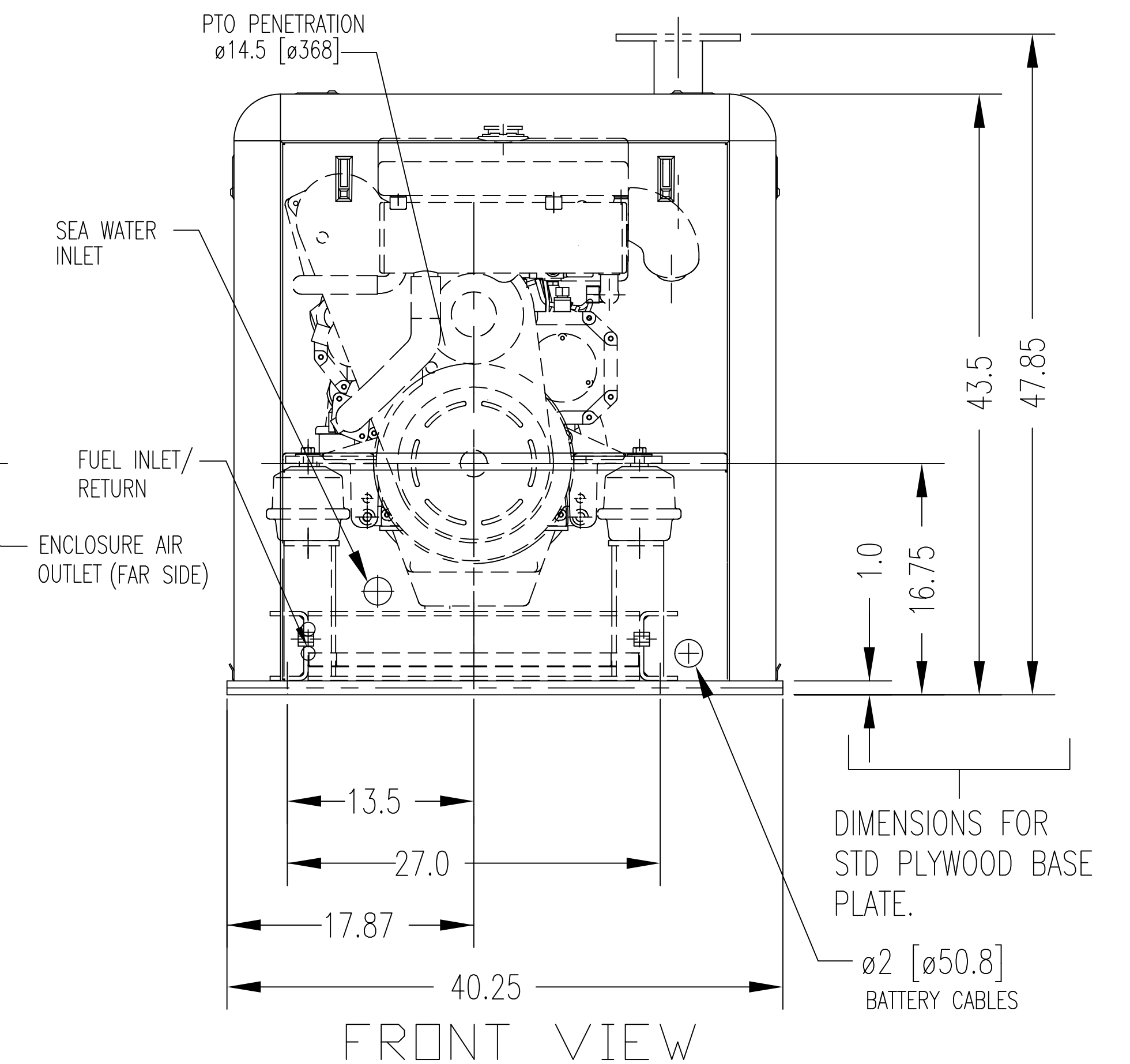
- 1) CLASSED SOUND SHIELDS ARE ALWAYS EQUIPPED WITH ALUMINUM BASE PLATES.
- 2) ALUMINUM BASE PLATES ARE OPTIONAL ON NON CLASSED SHIELDS.
- 3) APPROX WEIGHT AS FOLLOWS:
(SHIELD ONLY, FULLY INSULATED).
STD BASE PLATE, STD SOUND FOAM: 601 lbs [273 kg]
OPT. ALUM BASE PLATE, STD FOAM: 710 lbs. [322 kg]
CLASSED SHIELD: 646.4 lbs [293 kg]



REAR VIEW



RH (SERVICE) SIDE ELEVATION



FRONT VIEW

SYMBOL	DATE	DESCRIPTION	BY	CHECKED
REVISIONS				
<p>TOLERANCES UNLESS OTHERWISE SPECIFIED: .XX: ± .XXX: ± ANGULAR: ±</p>				
<p>CAD REVISION ON CAD ONLY</p>		<p>DRAWN: LTP 12/21/08 CHECKED: RELEASED: SHEETS: 1 OF 1 UNITS OF MEASURE: INCHES</p>		
<p>THIRD ANGLE PROJECTION</p>		<p>TITLE: 4420 14th AVE. N.W. SEATTLE, WA 98107 (206) 789-3880</p>		
<p>SCALE: 1/8</p>		<p>INSTALLATION DIMENSIONS M1066T 3Ø SOUND SHIELD w/STANDARD AND ALUM BASE PLATE.</p>		
<p>DWG. NO: D-4340</p>		<p>REV:</p>		

