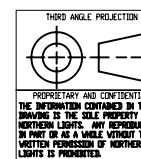


- NOTE:
- CENTER OF GRAVITY VALUES DO NOT INCLUDE PTO/CLUTCH ASSEMBLY.
  - PTO/CLUTCH ADAPTER ASSY (ONLY) WEIGHS APPROX. 29.5 kG [65 lbs.]
  - CUSTOMER MUST RECALCULATE CG FOR ADDITION OF HYDRAULIC PUMP.

TOTAL WEIGHT, WET: 604 kG [1331.5 lbs]  
WITH PTO: 633.5 kG [1396.5 lbs]



UNLESS OTHERWISE SPECIFIED:		NAME	DATE	NORTHERN LIGHTS	
DIMENSIONS ARE IN MILLIMETERS		LTP	6/28/2011	4420 14th AVE. N.W. Suite 110, VA 98007 (252) 759-3888 www.northern-lights.com	
TOLERANCES:		CHECKED		TITLE:	
ANGULAR: ± 0.5° BEND ± 1.0°		ENG APPR.		INSTALLATION DIMENSIONS	
HOLE: ± 0.13		MFG APPR.		M944W 1800/1500 RPM 1 Ø / 3Ø GENSET	
TWO PLACE DECIMAL ± 0.2		QA		SIZE DWG. NO.	
THREE PLACE DECIMAL ± 0.13		COMMENTS		D D-4527	
INTERPRET GEOMETRIC TOLERANCING PER ASME Y14.5M				SCALE: 1:10	
WATER				WEIGHT:	
NEXT ASSY		USED ON	FINISH	SHEET 1 OF 1	
APPLICATION				REV	

THE DIMENSIONS ON THIS DRAWING ARE SUBJECT TO CHANGE. PLEASE CONTACT NORTHERN LIGHTS INC TO BE SURE YOU HAVE THE MOST CURRENT REVISION.