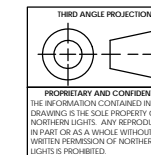


TOTAL WEIGHT (WET): 514 KG. [1133 LBS.]
ADD 29.5 KG [65 lbs] FOR PTO OPTION.



REV.	DESCRIPTION	DATE	BY	CHECKED
B	ECN#3096 WAS SHOWN WITH 2" NPT FEMALE DRY EXH CONNECTION. REPLACED WITH NEW DRY ELBOW WITH 2" FLANGED CONNECTION. ALSO ADDED NOTE TO SHOW RAW WATER OUTLET WHEN USED WITH DRY EXH OPT. DELETE WAVENET OPTION.	3/4/2015	LTP	TAH 3/4/2015
A	ADDED DRY EXHAUST OPTION AND RELATED FEATURES AND DIMENSIONS FILED UNDER ECN#2847	9/8/2014	LTP	MG 9/8/14

REVISIONS			
UNLESS OTHERWISE SPECIFIED:	NAME	DATE	
DIMENSIONS ARE IN MILLIMETERS	DRAWN	LTP	1/10/12
TOLERANCES	CHECKED		
ANGULAR: ±0.5°	ENG APPR		
MACH: ±0.1	MFG APPR		
X: ±0.5	Q.A.		
R.X: ±0.3	COMMENTS		
INTERPRET GEOMETRIC TOLERANCING PER ASME Y14.5M			
MATERIAL:			

		4420 14th AVE. N.W. Seattle, WA 98107 (206) 789-3880 www.northern-lights.com
TITLE: INSTALLATION DIMENSIONS M864W3 SOUND SHIELD		
SIZE: D	DWG. NO.: D-4565	REV: B
SCALE: 1:10	WEIGHT:	SHEET 1 OF 1