

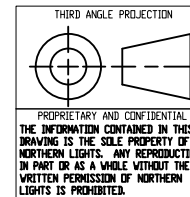
PTO PUMP MTG FACE (OPT)

B-PAD: H36 B SPLINE 13T 16/32 D.P.
 Ø 7/8 SPLINE
 4x 1/2-13 UNC-2B THRU EQ. SP DN
 Ø 5.75 B.C.

C-PAD: H36 C SPLINE 14T 12/24 D.P.
 Ø 1-1/4 SPLINE
 4x 1/2-13 UNC-2B THRU EQ. SP DN
 Ø 6.375 B.C.
 4x 5/8-13 UNC-2B THRU EQ. SP DN
 Ø 7.125 B.C.
 P.I.L.O.T.: Ø 4.000/3.998

- NOTES:
- CENTER OF GRAVITY VALUES DO NOT INCLUDE PTO/CLUTCH ASSEMBLY.
 - PTO ADAPTER/CLUTCH ASSY WEIGHS APPROX 116 lbs (52 kg.)
 - CUSTOMER MUST RECALCULATE CG FOR ADDITION OF HYDRAULIC PUMP.

WET WEIGHT: 3776 lbs [1713 kg] W/O PTO OPTION
 3892 lbs [1765 kg] W/PTO OPTION



UNLESS OTHERWISE SPECIFIED: DIMENSIONS ARE IN MILLIMETERS TOLERANCES:		NAME		DATE		NORTHERN LIGHTS		4420 14th AVE. N.W. Seattle, WA 98107 (206) 789-3880 www.northern-lights.com	
ANGULAR:	MACH ± 0.5°	DRAWN	LTP	2/7/13					
BOND ± 0.1°	ENG APPR					TITLE: INSTALLATION DIMENSIONS			
XX ± 0.3	MFG APPR					M1066H 60/50 Hz 3 Ø ONLY			
DIMENSIONAL GEOMETRIC TOLERANCING PER: ASME Y14.5M	DIA.					SIZE PART NO.		DWG. NO.	
MATERIAL:	FINISH:					D		D-4641	
DO NOT SCALE						SCALE: 1:10		WEIGHT:	
								SHEET 1 OF 1	