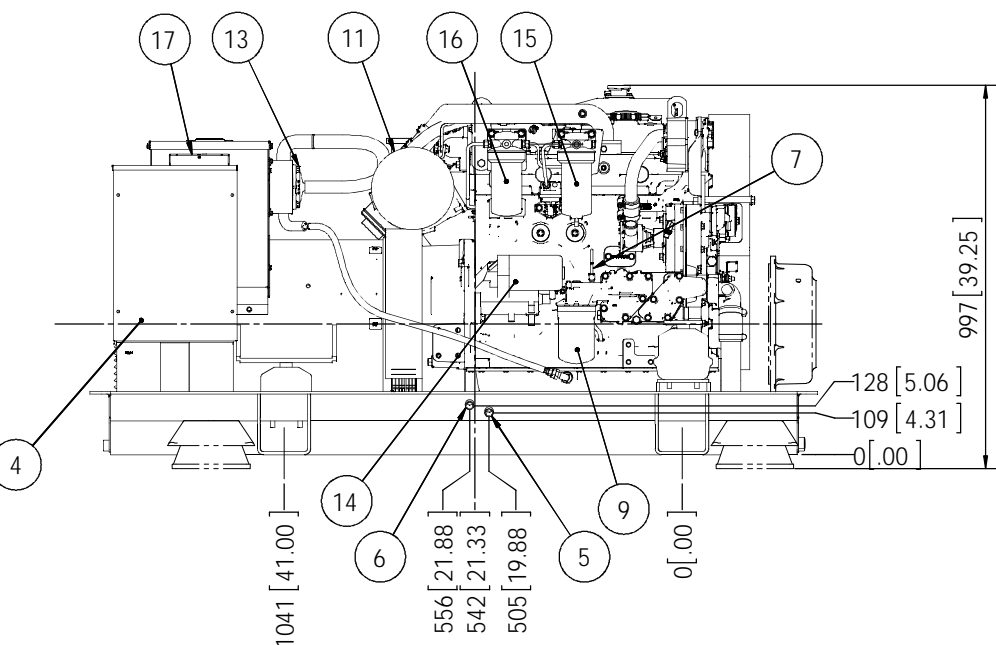
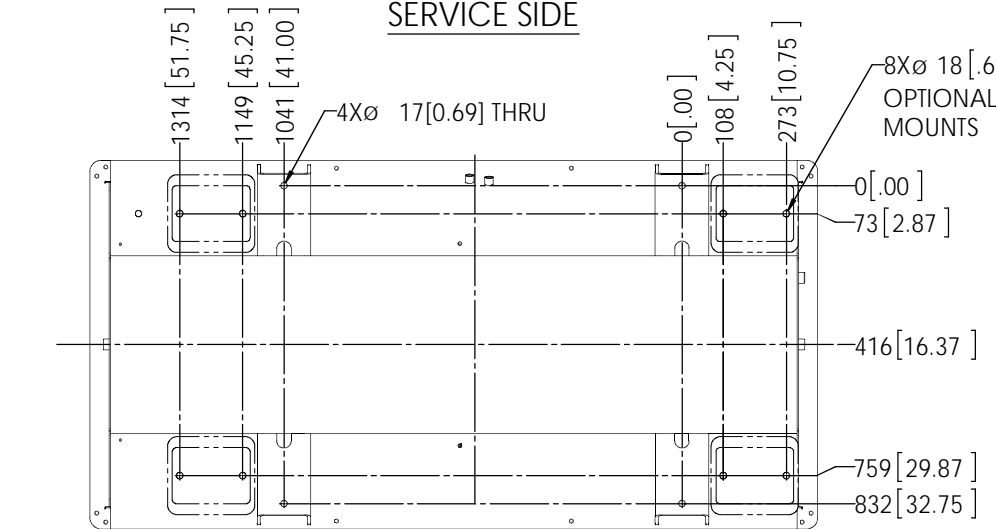


PLAN



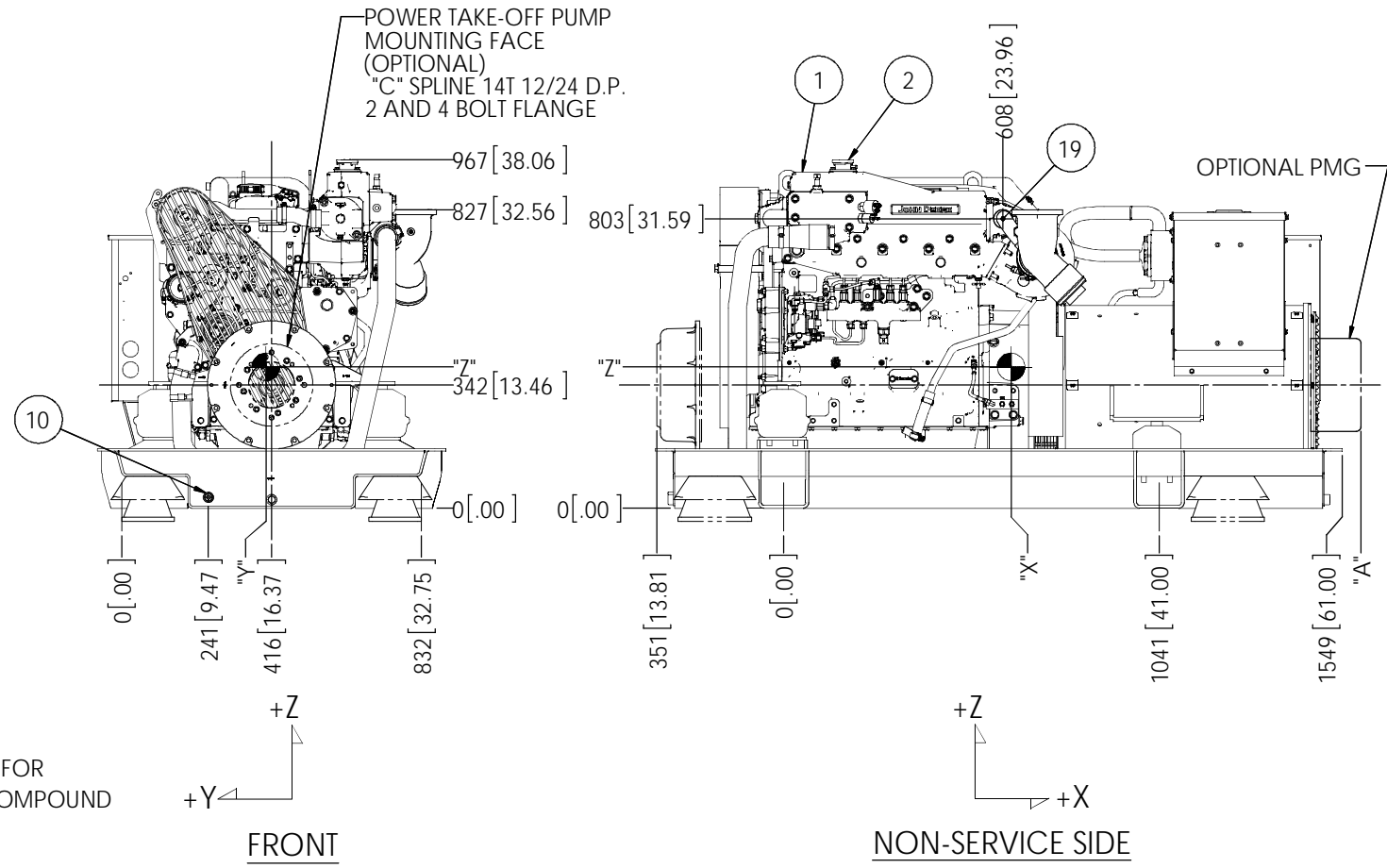
SERVICE SIDE



BOTTOM

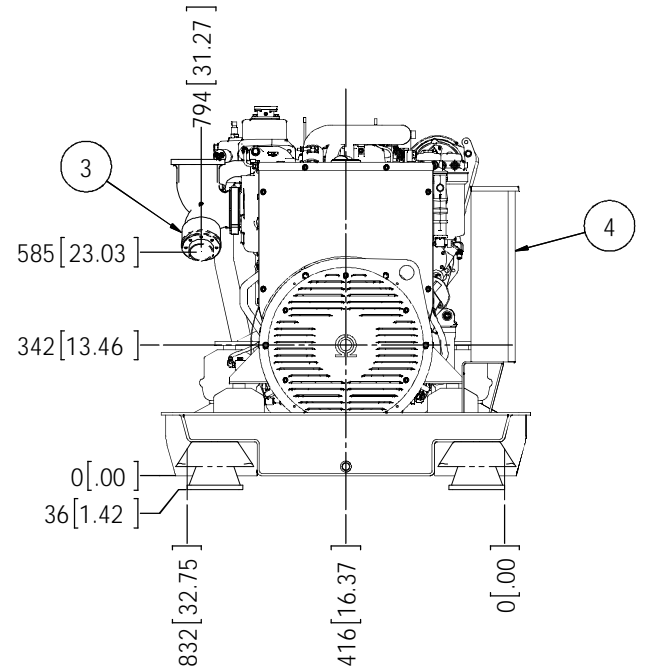
MODELS	EST. WEIGHT*	C.G.			W/PMG "A"
		"X"	"Y"	"Z"	
M65T13.11L 65kW 1800RPM 60Hz 3 Ø	2315 LBS [1050 kg]	594[23.39]	-416[16.37]	398[15.67]	1523[59.96]
M50T13.11L 50kW 1800RPM 60Hz 3 Ø					
M65T13.31L 65kW 1800RPM 60Hz 1 Ø	2460 LBS [1116 kg]	631[24.84]	-416[16.37]	392[15.43]	1602[63.06]
M50T13.11L 50kW 1800RPM 60Hz 1 Ø					
OPTIONAL PTO	154 LBS [70 kg]	-229[9.02]	-416[16.37]	342[13.46]	
OPTIONAL COMPOUND MOUNTS	70 LBS [32 kg]	521[20.51]	-416[16.37]	27[1.06]	

*WITH OIL, NO COOLANT

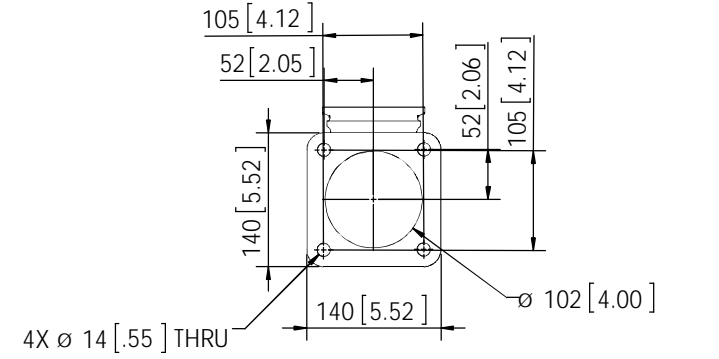


FRONT

NON-SERVICE SIDE



REAR



OPTIONAL DRY EXHAUST ELBOW FLANGE DETAIL

THE DIMENSIONS ON THIS DRAWING ARE SUBJECT TO CHANGE. PLEASE CONTACT NLI TO BE SURE YOU HAVE THE MOST CURRENT REVISION.

ITEM	DESCRIPTION
1	EXPANSION TANK
2	COOLANT FILL
3	OPTIONAL WET EXHAUST Ø 4 H.B.
4	D.C. JUNCTION BOX
5	FUEL INLET - 3/8 NPT
6	FUEL RETURN - 3/8 NPT
7	CRANKCASE OIL DIPSTICK
8	CRANKCASE OIL FILLER
9	CRANKCASE OIL FILTER
10	ENGINE OIL DRAIN - 1/2 NPT
11	AIR INLET FILTER
12	DRY EXHAUST ELBOW - SEE DETAIL
13	CLOSED CRANKCASE VENTILATION SYSTEM
14	ELECTRIC STARTER
15	PRIMARY FUEL FILTER
16	FINAL FUEL FILTER
17	ENGINE CONTROL UNIT
18	SEAWATER INLET - Ø 1-1/4 H.B.
19	SEAWATER OUTLET - Ø 1-1/2 H.B. (DRY EXHAUST)

UNLESS OTHERWISE SPECIFIED, DIMENSIONS ARE IN MILLIMETERS		NAME		DATE		NORTHERN LIGHTS		4420 14th AVE. N.W. Seattle, WA 98107 (206) 789-3880 www.northern-lights.com	
TOLERANCES: ANGULAR: MACH ± 0.5° BEND ± 1.0° X ± 2 X.X ± 1		DRAWN	MG	07/02/14	CHECKED	TAH	09/03/14	TITLE: INSTALLATION DIMENSIONS M65T13L/M50T13L HEAT EXCHANGED	
INTERPRET GEOMETRIC TOLERANCING PER ASME Y14.5M		ENG APPR.			MFG APPR.			SIZE	PART NO.
MATERIAL:		FINISH:		COMMENTS:		SCALE: 1:10		WEIGHT:	SHEET 1 OF 1
PROPRIETARY AND CONFIDENTIAL THE INFORMATION CONTAINED IN THIS DRAWING IS THE SOLE PROPERTY OF NORTHERN LIGHTS. ANY REPRODUCTION IN PART OR AS A WHOLE WITHOUT THE WRITTEN PERMISSION OF NORTHERN LIGHTS IS PROHIBITED.		DO NOT SCALE		D		SEE TABLE		DWG. NO. D-4765	