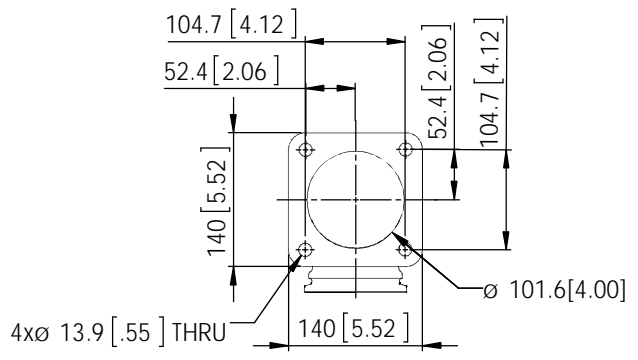
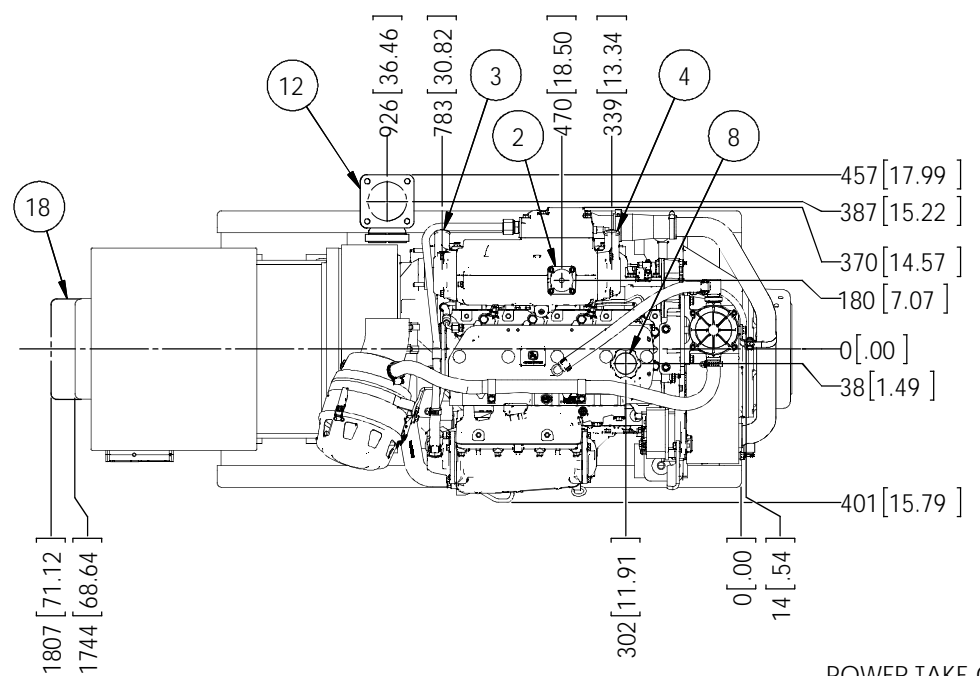
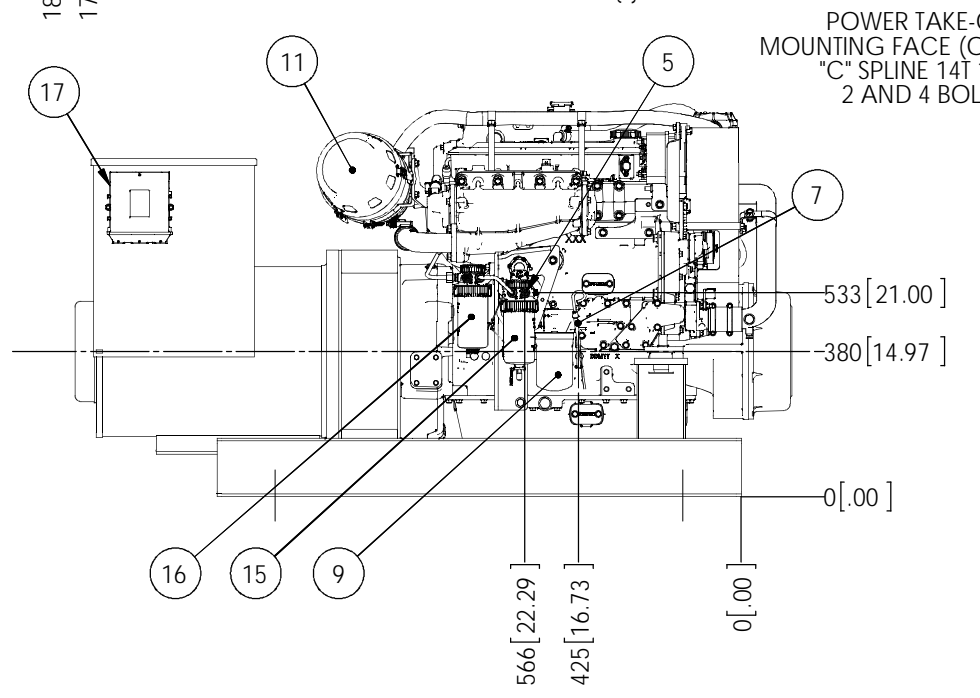


MODELS	APPROX. WT. lbs [kg]
M99C13.2S 99kW 1800 RPM 60Hz 3 ø	2780 [1261]

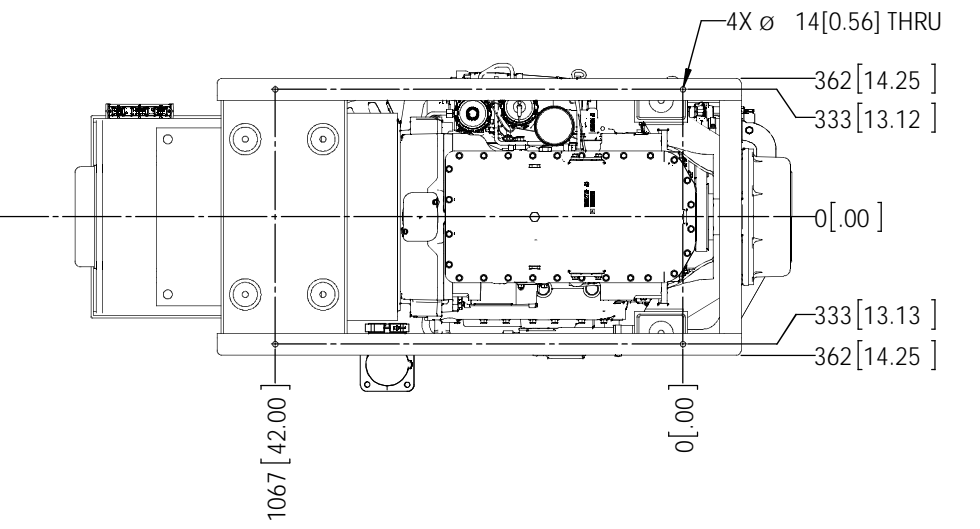
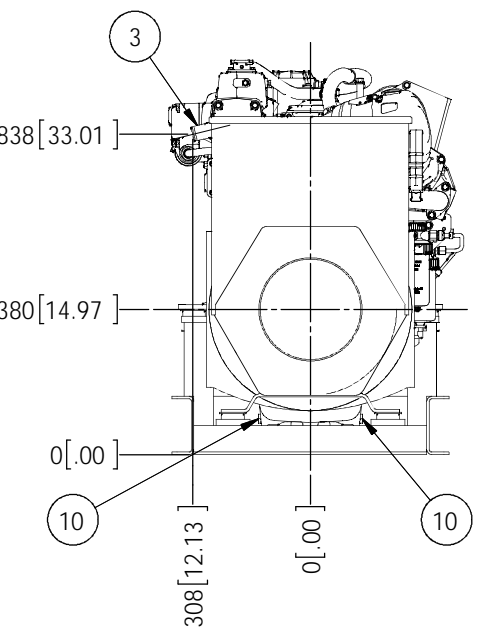
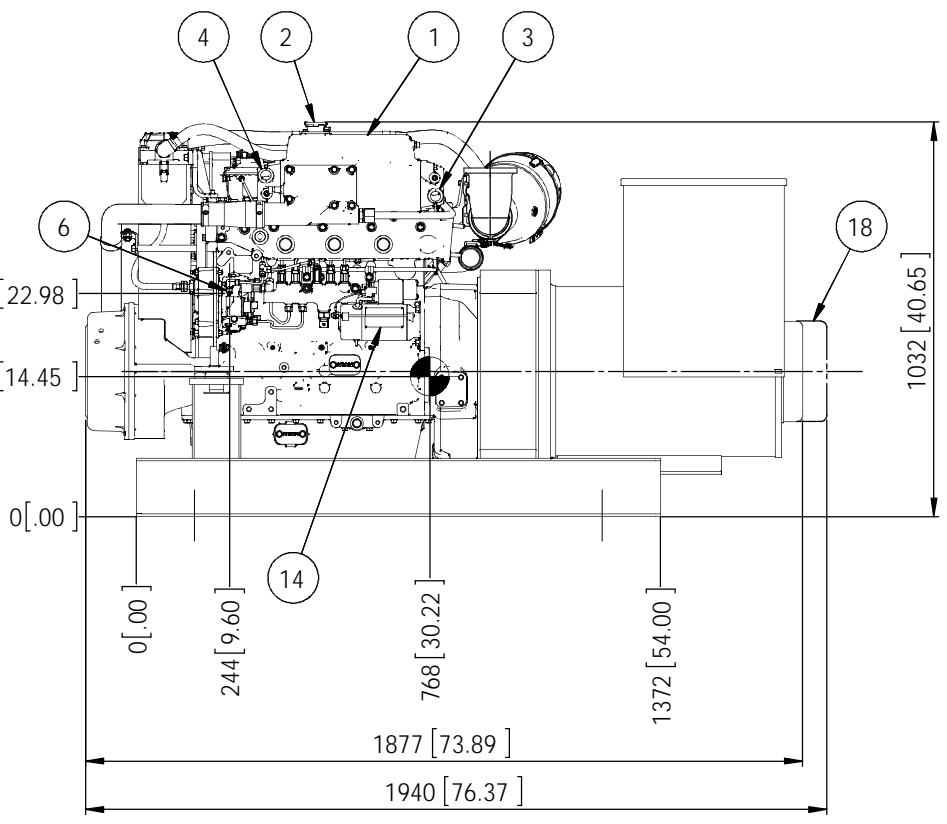
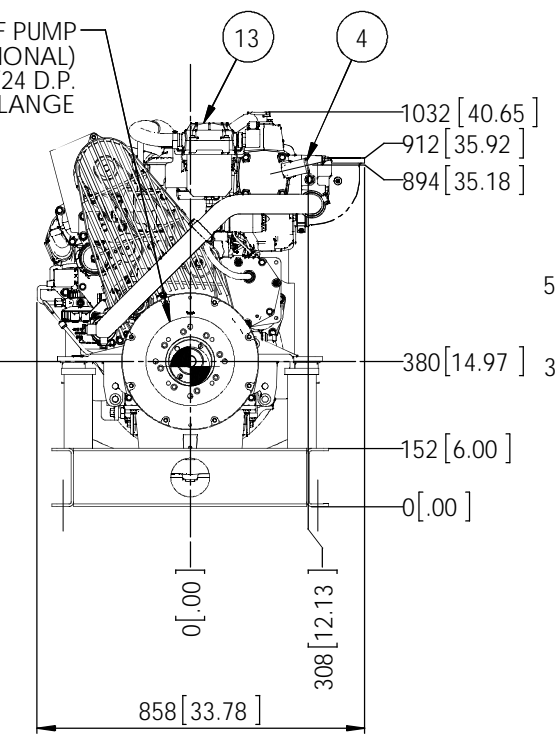
ITEM	DESCRIPTION
1	EXPANSION TANK
2	COOLANT FILL
3	COOLANT INLET ø 1.5 H.B.
4	COOLANT OUTLET ø 1.5 H.B.
5	FUEL SUPPLY ø 3/8 H.B.
6	FUEL RETURN ø 1/4 H.B.
7	CRANKCASE OIL DIPSTICK
8	CRANKCASE OIL FILLER
9	CRANKCASE OIL FILTER
10	ENGINE OIL DRAIN - M18x1.5
11	AIR INLET FILTER
12	OPTIONAL DRY EXHAUST ELBOW - SEE DETAIL
13	CLOSED CRANKCASE VENTILATION SYSTEM
14	ELECTRIC STARTER
15	PRIMARY FUEL FILTER
16	FINAL FUEL FILTER
17	ENGINE CONTROL UNIT
18	OPTIONAL PMG



OPTIONAL DRY EXHAUST ELBOW FLANGE DETAIL

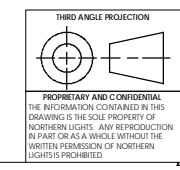


POWER TAKE-OFF PUMP MOUNTING FACE (OPTIONAL)  
"C" SPLINE 14T 12/24 D.P.  
2 AND 4 BOLT FLANGE



NOTE:  
1. FOR M99C13 WITH W/O OPTIONAL PTO, SEE DRAWING D-4693.

THE DIMENSIONS ON THIS DRAWING ARE SUBJECT TO CHANGE. PLEASE CONTACT NLI TO BE SURE YOU HAVE THE MOST CURRENT REVISION.



UNLESS OTHERWISE SPECIFIED, DIMENSIONS ARE IN MILLIMETERS		NAME	DATE	<b>NORTHERN LIGHTS</b>	4420 14th AVE. N.W. Seattle, WA 98107 (206) 789-3880 www.northern-lights.com
TOLERANCES: ANGULAR: MACH ± 0.5° BEND ± 1.0° X = 3 X.X = 2		DRAWN	MG		
INTERPRET GEOMETRIC TOLERANCING PER ASME Y14.5M		CHECKED	TAH	09/03/14	TITLE: <b>INSTALLATION DIMENSIONS</b>
MATERIAL:		ENG APPR:	MG APPR:		M99C13.2S K.C. WITH OPTIONAL PTO
FINISH:		COMMENTS:			SIZE: <b>D</b>
DO NOT SCALE					PART NO.:
					DWG. NO. <b>D-4775</b>
					SCALE: 1:10
					WEIGHT:
					SHEET 1 OF 1