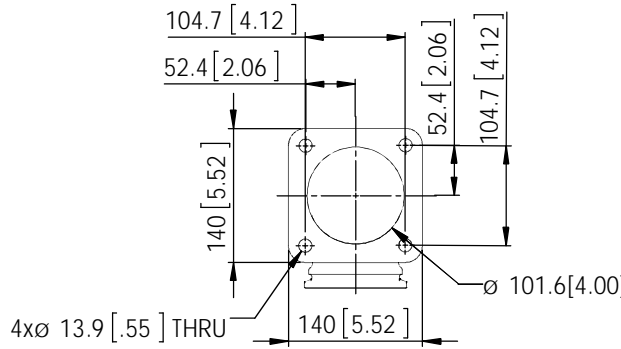
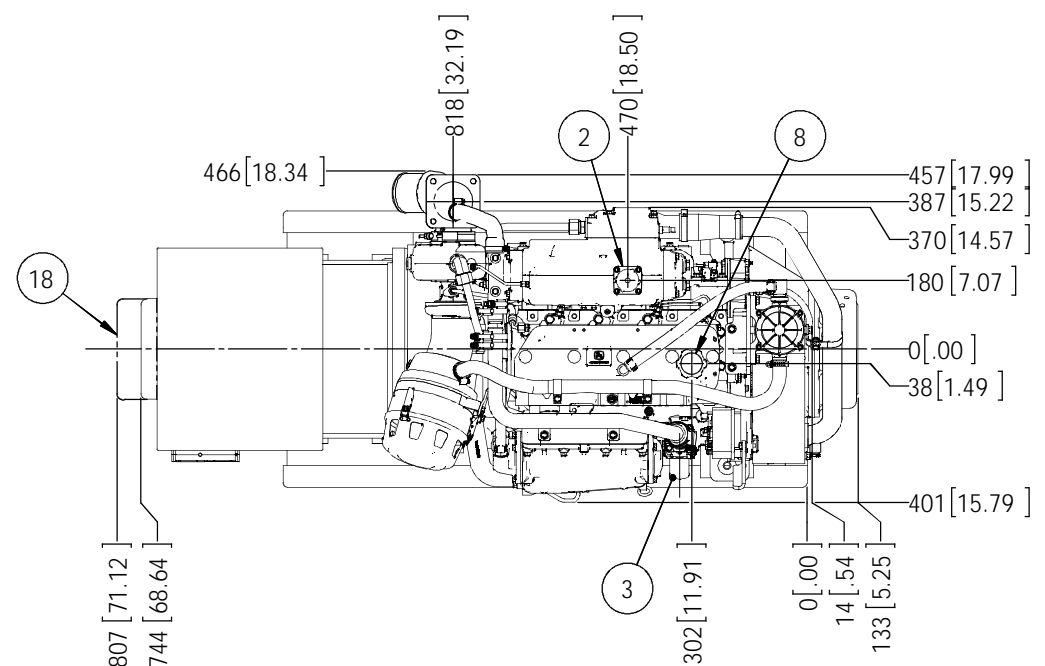
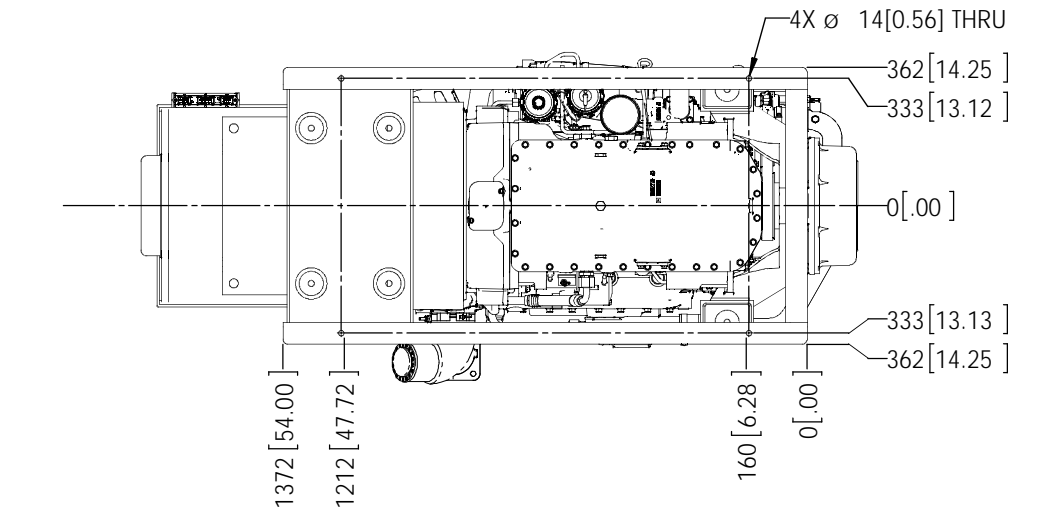
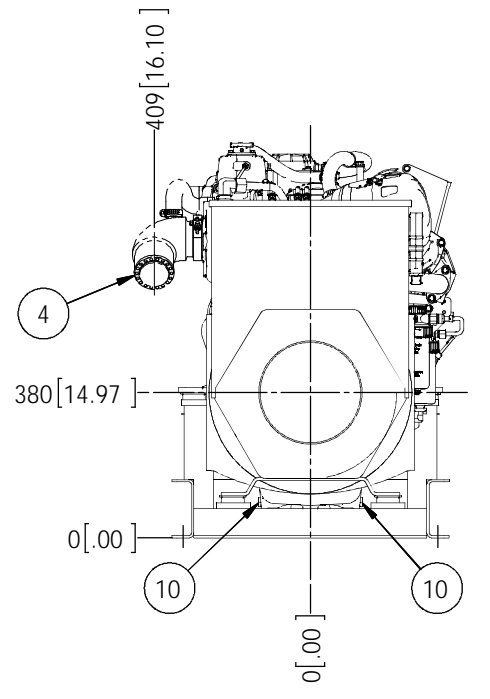
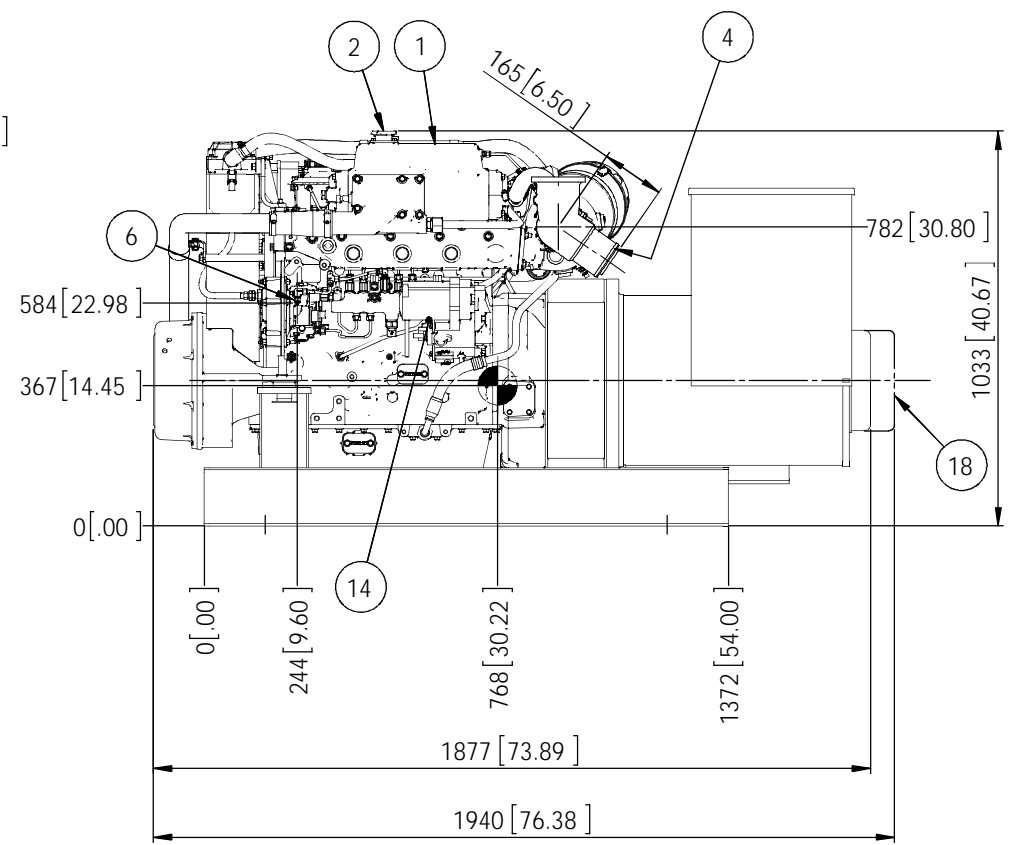
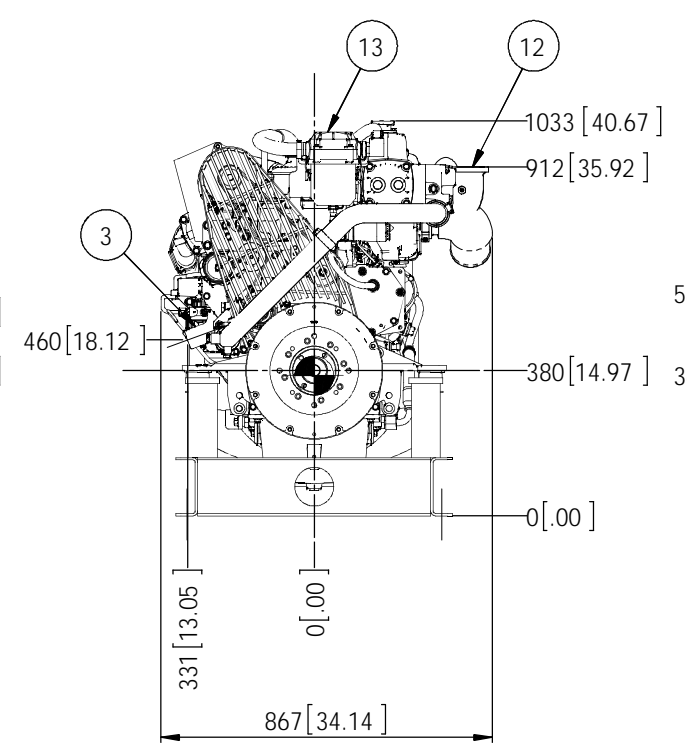
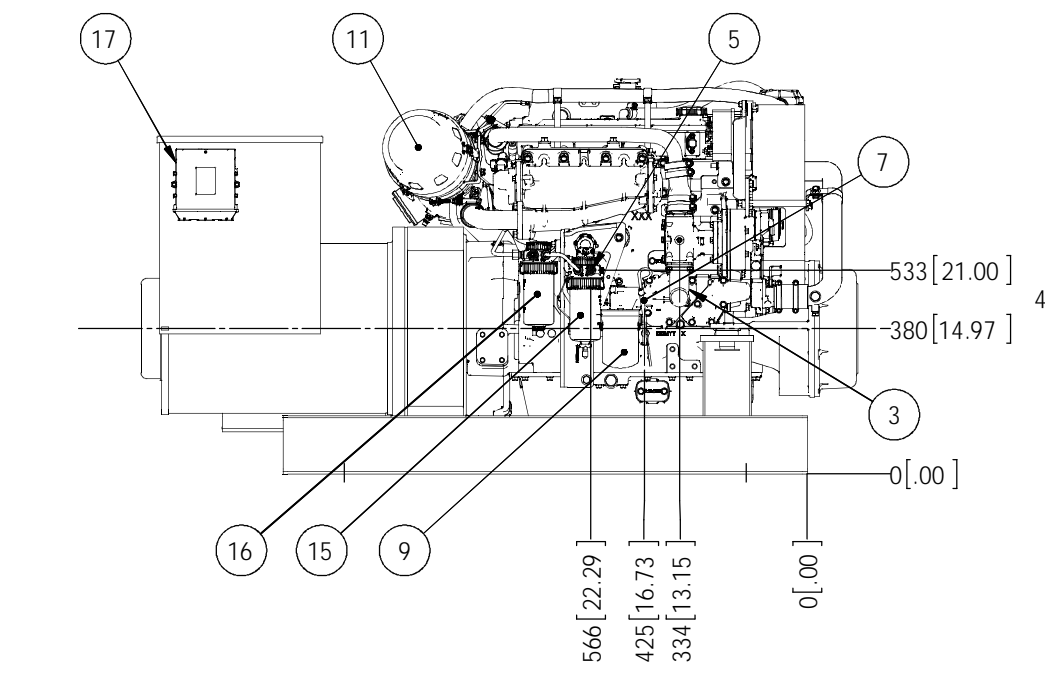


| MODELS | APPROX. WT. lbs [kg] |
|----------------------------------|----------------------|
| M99C13.1S 99kW 1800 RPM 60Hz 3 ø | 2800 [1270] |

| ITEM | DESCRIPTION |
|------|---|
| 1 | EXPANSION TANK |
| 2 | COOLANT FILL |
| 3 | SEAWATER INLET - ø 2.0 H.B. |
| 4 | OPTIONAL WET EXHAUST ELBOW - ø 4.0 H.B. |
| 5 | FUEL SUPPLY - ø 3/8 H.B. |
| 6 | FUEL RETURN - ø 1/4 H.B. |
| 7 | CRANKCASE OIL DIPSTICK |
| 8 | CRANKCASE OIL FILLER |
| 9 | CRANKCASE OIL FILTER |
| 10 | ENGINE OIL DRAIN - M18x1.5 |
| 11 | AIR INLET FILTER |
| 12 | OPTIONAL DRY EXHAUST ELBOW - SEE DETAIL |
| 13 | CLOSED CRANKCASE VENTILATION SYSTEM |
| 14 | ELECTRIC STARTER |
| 15 | PRIMARY FUEL FILTER |
| 16 | FINAL FUEL FILTER |
| 17 | ENGINE CONTROL UNIT |
| 18 | OPTIONAL PMG |

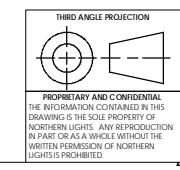


OPTIONAL DRY EXHAUST ELBOW FLANGE DETAIL



NOTE:
1. FOR M99C13 W/O OPTIONAL PTO, SEE DRAWING D-4776.

THE DIMENSIONS ON THIS DRAWING ARE SUBJECT TO CHANGE. PLEASE CONTACT NLI TO BE SURE YOU HAVE THE MOST CURRENT REVISION.



| | | | | | |
|---|--|--------------|------|------------------------|---|
| UNLESS OTHERWISE SPECIFIED, DIMENSIONS ARE IN MILLIMETERS | | NAME | DATE | NORTHERN LIGHTS | 4420 14th AVE. N.W. Seattle, WA 98107 (206) 789-3880 www.northern-lights.com |
| TOLERANCES | | DRAWN | MG | | |
| ANGULAR: MACH ± 0.5° BEND ± 1.0° | | CHECKED | TAH | 09/03/14 | TITLE: INSTALLATION DIMENSIONS M99C13.1S H.E. WITH OPTIONAL PTO |
| X ± 0.3 | | ENG APPR. | | | |
| X.X ± 0.2 | | MFG APPR. | | | SIZE: D PART NO.: D-4777 REV: 1 |
| INTERPRET GEOMETRIC TOLERANCING PER: ASME Y14.5M | | Q.A. | | | |
| MATERIAL: | | COMMENTS: | | SCALE: 1:10 | WEIGHT: |
| FINISH: | | DO NOT SCALE | | SHEET 1 OF 1 | |