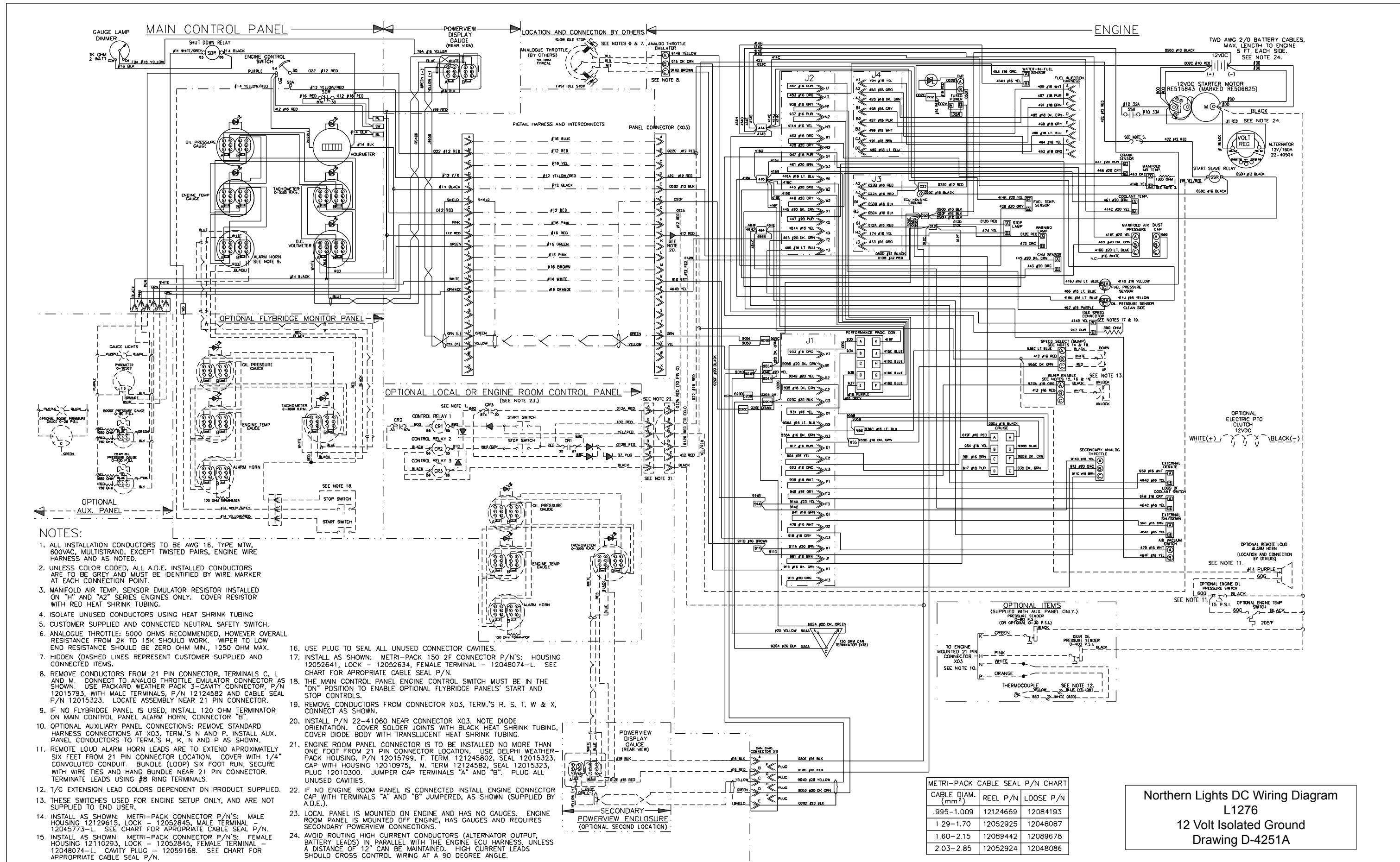


- NOTES:**
1. ALL INSTALLATION CONDUCTORS TO BE AWG 16, TYPE MTW, 600VAC, MULTISTRAND, EXCEPT TWISTED PAIRS, ENGINE WIRE HARNESS AND AS NOTED.
 2. UNLESS COLOR CODED, ALL A.D.E. INSTALLED CONDUCTORS ARE TO BE GREY AND MUST BE IDENTIFIED BY WIRE MARKER AT EACH CONNECTION POINT.
 3. MANIFOLD AIR TEMP. SENSOR EMULATOR RESISTOR INSTALLED ON "H" AND "A2" SERIES ENGINES ONLY. COVER RESISTOR WITH RED HEAT SHRINK TUBING.
 4. ISOLATE UNUSED CONDUCTORS USING HEAT SHRINK TUBING.
 5. CUSTOMER SUPPLIED AND CONNECTED NEUTRAL SAFETY SWITCH.
 6. ANALOGUE THROTTLE: 5000 OHMS RECOMMENDED, HOWEVER OVERALL RESISTANCE FROM 2K TO 15K SHOULD WORK. WIPER TO LOW END RESISTANCE SHOULD BE ZERO OHM MIN., 1250 OHM MAX.
 7. HIDDEN (DASHED LINES REPRESENT CUSTOMER SUPPLIED AND CONNECTED ITEMS.
 8. REMOVE CONDUCTORS FROM 21 PIN CONNECTOR, TERMINALS C, L AND M. CONNECT TO ANALOG THROTTLE EMULATOR CONNECTOR AS SHOWN. USE PACKARD WEATHER PACK 3-CAVITY CONNECTOR, P/N 12015793, WITH MALE TERMINALS, P/N 12124582 AND CABLE SEAL P/N 12015323. LOCATE ASSEMBLY NEAR 21 PIN CONNECTOR.
 9. IF NO FLYBRIDGE PANEL IS USED, INSTALL 120 OHM TERMINATOR ON MAIN CONTROL PANEL ALARM HORN, CONNECTOR "B".
 10. OPTIONAL AUXILIARY PANEL CONNECTIONS: REMOVE STANDARD HARNESS CONNECTIONS AT X03, TERM.'S N AND P. INSTALL AUX. PANEL CONDUCTORS TO TERM.'S H, K, N AND P AS SHOWN.
 11. REMOTE LOUD ALARM HORN LEADS ARE TO EXTEND APPROXIMATELY SIX FEET FROM 21 PIN CONNECTOR LOCATION. COVER WITH 1/4" CONVOLUTED CONDUIT. BUNDLE (LOOP) SIX FOOT RUN, SECURE WITH WIRE TIES AND HANG BUNDLE NEAR 21 PIN CONNECTOR. TERMINATE LEADS USING #8 RING TERMINALS.
 12. T/C EXTENSION LEAD COLORS DEPENDENT ON PRODUCT SUPPLIED.
 13. THESE SWITCHES USED FOR ENGINE SETUP ONLY, AND ARE NOT SUPPLIED TO END USER.
 14. INSTALL AS SHOWN: METRI-PACK CONNECTOR P/N'S: MALE HOUSING 12129615, LOCK - 12052845, MALE TERMINAL - 12045773-L. SEE CHART FOR APPROPRIATE CABLE SEAL P/N.
 15. INSTALL AS SHOWN: METRI-PACK CONNECTOR P/N'S: FEMALE HOUSING 12110293, LOCK - 12052845, FEMALE TERMINAL - 12048074-L. CAVITY PLUG - 12059168. SEE CHART FOR APPROPRIATE CABLE SEAL P/N.
 16. USE PLUG TO SEAL ALL UNUSED CONNECTOR CAVITIES.
 17. INSTALL AS SHOWN: METRI-PACK 150 2F CONNECTOR P/N'S: HOUSING 12052641, LOCK - 12052634, FEMALE TERMINAL - 12048074-L. SEE CHART FOR APPROPRIATE CABLE SEAL P/N.
 18. THE MAIN CONTROL PANEL ENGINE CONTROL SWITCH MUST BE IN THE "ON" POSITION TO ENABLE OPTIONAL FLYBRIDGE PANELS' START AND STOP CONTROLS.
 19. REMOVE CONDUCTORS FROM CONNECTOR X03, TERM.'S R, S, T, W & X, CONNECT AS SHOWN.
 20. INSTALL P/N 22-41060 NEAR CONNECTOR X03. NOTE DIODE ORIENTATION. COVER SOLDER JOINTS WITH BLACK HEAT SHRINK TUBING, COVER DIODE BODY WITH TRANSLUCENT HEAT SHRINK TUBING.
 21. ENGINE ROOM PANEL CONNECTOR IS TO BE INSTALLED NO MORE THAN ONE FOOT FROM 21 PIN CONNECTOR LOCATION. USE DELPHI WEATHER-PACK HOUSING, P/N 12015799, F. TERM. 121245802, SEAL 12015323. CAP WITH HOUSING 12010975, M. TERM 12124582, SEAL 12015323, PLUG 12010300. JUMPER CAP TERMINALS "A" AND "B". PLUG ALL UNUSED CAVITIES.
 22. IF NO ENGINE ROOM PANEL IS CONNECTED INSTALL ENGINE CONNECTOR CAP WITH TERMINALS "A" AND "B" JUMPERED, AS SHOWN (SUPPLIED BY A.D.E.).
 23. LOCAL PANEL IS MOUNTED ON ENGINE AND HAS NO GAUGES. ENGINE ROOM PANEL IS MOUNTED OFF ENGINE, HAS GAUGES AND REQUIRES SECONDARY POWERVIEW CONNECTIONS.
 24. AVOID ROUTING HIGH CURRENT CONDUCTORS (ALTERNATOR OUTPUT, BATTERY LEADS) IN PARALLEL WITH THE ENGINE ECU HARNESS, UNLESS A DISTANCE OF 12" CAN BE MAINTAINED. HIGH CURRENT LEADS SHOULD CROSS CONTROL WIRING AT A 90 DEGREE ANGLE.

METRI-PACK CABLE SEAL P/N CHART

CABLE DIAM. (mm)	REEL P/N	LOOSE P/N
.995-1.009	12124669	12084193
1.29-1.70	12052925	12048087
1.60-2.15	12089442	12089678
2.03-2.85	12052924	12048086

Northern Lights DC Wiring Diagram
L1276
12 Volt Standard Ground
Drawing D-4264

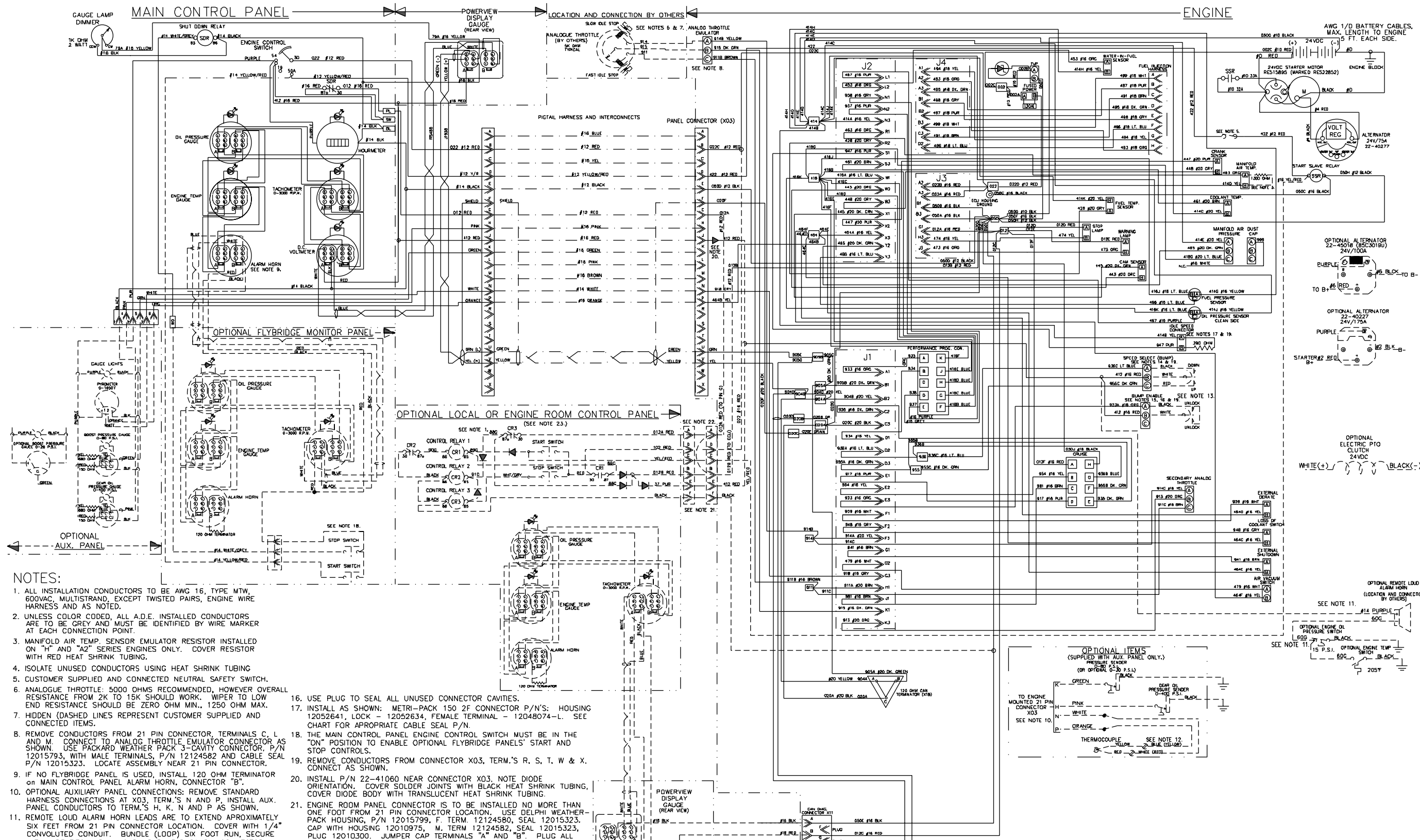


- NOTES:**
- ALL INSTALLATION CONDUCTORS TO BE AWG 16, TYPE MTW, 600VAC, MULTISTRAND, EXCEPT TWISTED PAIRS, ENGINE WIRE HARNESS AND AS NOTED.
 - UNLESS COLOR CODED, ALL A.D.E. INSTALLED CONDUCTORS ARE TO BE GREY AND MUST BE IDENTIFIED BY WIRE MARKER AT EACH CONNECTION POINT.
 - MANIFOLD AIR TEMP. SENSOR EMULATOR RESISTOR INSTALLED ON "H" AND "A2" SERIES ENGINES ONLY. COVER RESISTOR WITH RED HEAT SHRINK TUBING.
 - ISOLATE UNUSED CONDUCTORS USING HEAT SHRINK TUBING
 - CUSTOMER SUPPLIED AND CONNECTED NEUTRAL SAFETY SWITCH.
 - ANALOGUE THROTTLE: 5000 OHMS RECOMMENDED, HOWEVER OVERALL RESISTANCE FROM 2K TO 15K SHOULD WORK. WIPER TO LOW END RESISTANCE SHOULD BE ZERO OHM MIN., 1250 OHM MAX.
 - HIDDEN (DASHED LINES REPRESENT CUSTOMER SUPPLIED AND CONNECTED ITEMS.
 - REMOVE CONDUCTORS FROM 21 PIN CONNECTOR, TERMINALS C, L AND M. CONNECT TO ANALOG THROTTLE EMULATOR CONNECTOR AS SHOWN. USE PACKARD WEATHER PACK 3-CAVITY CONNECTOR, P/N 12015793, WITH MALE TERMINALS, P/N 12124582 AND CABLE SEAL P/N 12015323. LOCATE ASSEMBLY NEAR 21 PIN CONNECTOR.
 - IF NO FLYBRIDGE PANEL IS USED, INSTALL 120 OHM TERMINATOR ON MAIN CONTROL PANEL ALARM HORN, CONNECTOR "B".
 - OPTIONAL AUXILIARY PANEL CONNECTIONS: REMOVE STANDARD HARNESS CONNECTIONS AT X03. TERM. S, N AND P. INSTALL AUX. PANEL CONDUCTORS TO TERM. S, H, K, N AND P AS SHOWN.
 - REMOTE LOUD ALARM HORN LEADS ARE TO EXTEND APPROXIMATELY SIX FEET FROM 21 PIN CONNECTOR LOCATION. COVER WITH 1/4" CONVOLUTED CONDUIT. BUNDLE (LOOP) SIX FOOT RUN, SECURE WITH WIRE TIES AND HANG BUNDLE NEAR 21 PIN CONNECTOR. TERMINATE LEADS USING #8 RING TERMINALS.
 - T/C EXTENSION LEAD COLORS DEPENDENT ON PRODUCT SUPPLIED.
 - THESE SWITCHES USED FOR ENGINE SETUP ONLY, AND ARE NOT SUPPLIED TO END USER.
 - INSTALL AS SHOWN: METRI-PACK CONNECTOR P/N'S: MALE HOUSING 12129615, LOCK - 12052845, MALE TERMINAL 12045773-L. SEE CHART FOR APPROPRIATE CABLE SEAL P/N.
 - INSTALL AS SHOWN: METRI-PACK CONNECTOR P/N'S: FEMALE HOUSING 12110293, LOCK - 12052845, FEMALE TERMINAL 12048074-L. CAVITY PLUG - 12059168. SEE CHART FOR APPROPRIATE CABLE SEAL P/N.
 - USE PLUG TO SEAL ALL UNUSED CONNECTOR CAVITIES.
 - INSTALL AS SHOWN: METRI-PACK 150 2F CONNECTOR P/N'S: HOUSING 12052641, LOCK - 12052634, FEMALE TERMINAL - 12048074-L. SEE CHART FOR APPROPRIATE CABLE SEAL P/N.
 - THE MAIN CONTROL PANEL ENGINE CONTROL SWITCH MUST BE IN THE "ON" POSITION TO ENABLE OPTIONAL FLYBRIDGE PANELS' START AND STOP CONTROLS.
 - REMOVE CONDUCTORS FROM CONNECTOR X03, TERM. S, R, S, T, W & X, CONNECT AS SHOWN.
 - INSTALL P/N 22-41080 NEAR CONNECTOR X03. NOTE DIODE ORIENTATION. COVER SOLDER JOINTS WITH BLACK HEAT SHRINK TUBING. COVER DIODE BODY WITH TRANSLUCENT HEAT SHRINK TUBING.
 - ENGINE ROOM PANEL CONNECTOR IS TO BE INSTALLED NO MORE THAN ONE FOOT FROM 21 PIN CONNECTOR LOCATION. USE DELPHI WEATHER-PACK HOUSING, P/N 12015799, F. TERM. 12124582, SEAL 12015323. CAP WITH HOUSING 12010975, M. TERM 12124582, SEAL 12015323, PLUG 12010300. JUMPER CAP TERMINALS "A" AND "B". PLUG ALL UNUSED CAVITIES.
 - IF NO ENGINE ROOM PANEL IS CONNECTED INSTALL ENGINE CONNECTOR CAP WITH TERMINALS "A" AND "B" JUMPERED, AS SHOWN (SUPPLIED BY A.D.E.).
 - LOCAL PANEL IS MOUNTED ON ENGINE AND HAS NO GAUGES. ENGINE ROOM PANEL IS MOUNTED OFF ENGINE, HAS GAUGES AND REQUIRES SECONDARY POWERVIEW CONNECTIONS.
 - AVOID ROUTING HIGH CURRENT CONDUCTORS (ALTERNATOR OUTPUT, BATTERY LEADS) IN PARALLEL WITH THE ENGINE ECU HARNESS, UNLESS A DISTANCE OF 12" CAN BE MAINTAINED. HIGH CURRENT LEADS SHOULD CROSS CONTROL WIRING AT A 90 DEGREE ANGLE.

METRI-PACK CABLE SEAL P/N CHART

CABLE DIAM. (mm ²)	REEL P/N	LOOSE P/N
.995-1.009	12124669	12084193
1.29-1.70	12052925	12048087
1.60-2.15	12089442	12089678
2.03-2.85	12052924	12048086

Northern Lights DC Wiring Diagram
L1276
12 Volt Isolated Ground
Drawing D-4251A

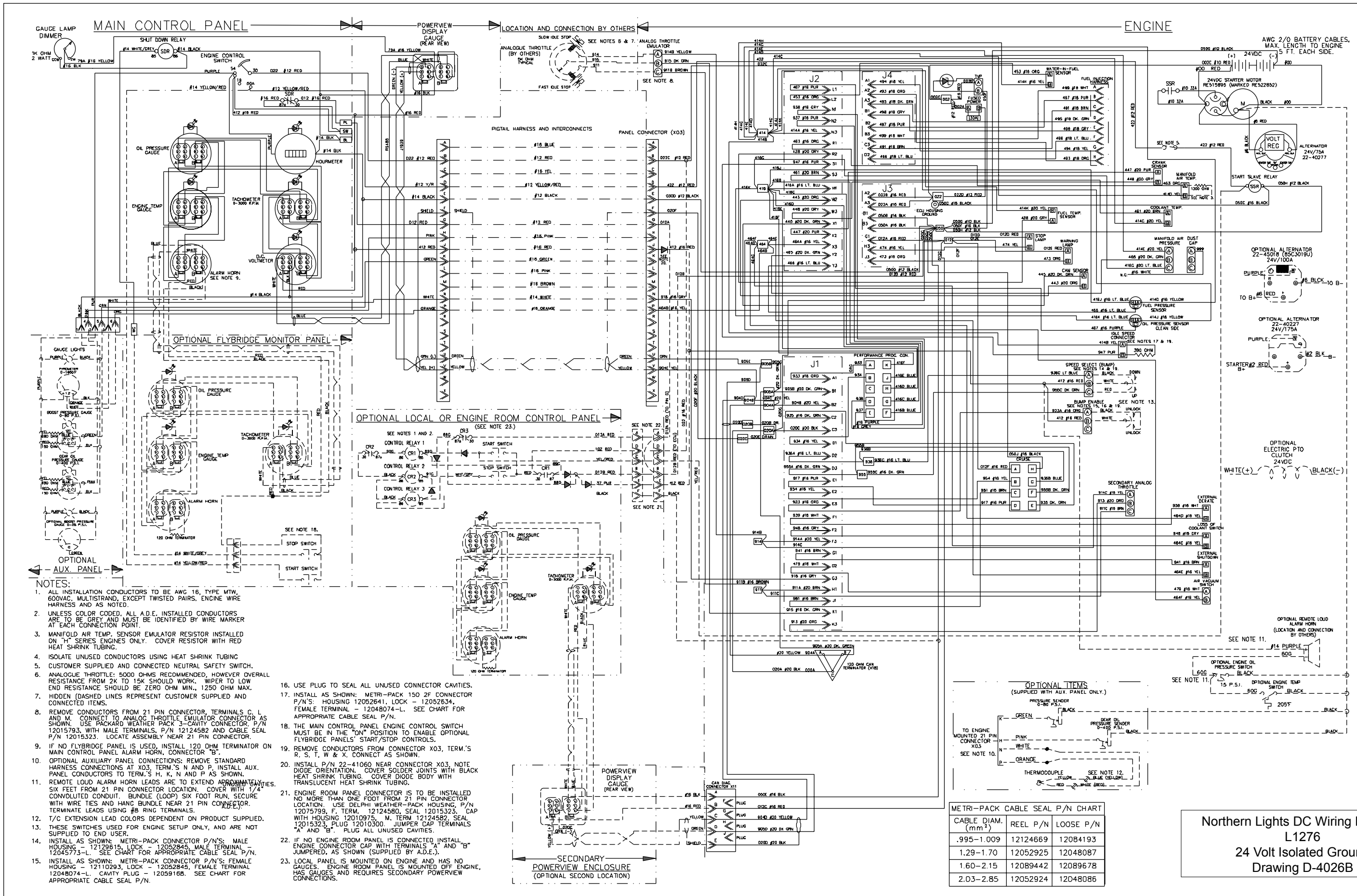


- NOTES:**
1. ALL INSTALLATION CONDUCTORS TO BE AWG 16, TYPE MTW, 600VAC, MULTISTRAND, EXCEPT TWISTED PAIRS, ENGINE WIRE HARNESS AND AS NOTED.
 2. UNLESS COLOR CODED, ALL A.D.E. INSTALLED CONDUCTORS ARE TO BE GREY AND MUST BE IDENTIFIED BY WIRE MARKER AT EACH CONNECTION POINT.
 3. MANIFOLD AIR TEMP. SENSOR EMULATOR RESISTOR INSTALLED ON "H" AND "A2" SERIES ENGINES ONLY. COVER RESISTOR WITH RED HEAT SHRINK TUBING.
 4. ISOLATE UNUSED CONDUCTORS USING HEAT SHRINK TUBING
 5. CUSTOMER SUPPLIED AND CONNECTED NEUTRAL SAFETY SWITCH.
 6. ANALOGUE THROTTLE: 5000 OHMS RECOMMENDED, HOWEVER OVERALL RESISTANCE FROM 2K TO 15K SHOULD WORK. WIPER TO LOW END RESISTANCE SHOULD BE ZERO OHM MIN., 1250 OHM MAX.
 7. HIDDEN (DASHED LINES REPRESENT CUSTOMER SUPPLIED AND CONNECTED ITEMS.
 8. REMOVE CONDUCTORS FROM 21 PIN CONNECTOR, TERMINALS C, L AND M. CONNECT TO ANALOG THROTTLE EMULATOR CONNECTOR AS SHOWN. USE PACKARD WEATHER PACK 3-CAVITY CONNECTOR, P/N 12015793, WITH MALE TERMINALS, P/N 12124582 AND CABLE SEAL P/N 12015323. LOCATE ASSEMBLY NEAR 21 PIN CONNECTOR.
 9. IF NO FLYBRIDGE PANEL IS USED, INSTALL 120 OHM TERMINATOR ON MAIN CONTROL PANEL ALARM HORN, CONNECTOR "B".
 10. OPTIONAL AUXILIARY PANEL CONNECTIONS: REMOVE STANDARD HARNESS CONNECTIONS AT X03, TERM.'S N AND P. INSTALL AUX. PANEL CONDUCTORS TO TERM.'S H, K, N AND P AS SHOWN.
 11. REMOTE LOUD ALARM HORN LEADS ARE TO EXTEND APPROXIMATELY SIX FEET FROM 21 PIN CONNECTOR LOCATION. COVER WITH 1/4" CONVOLUTED CONDUIT. BUNDLE (LODP) SIX FOOT RUN, SECURE WITH WIRE TIES AND HANG BUNDLE NEAR 21 PIN CONNECTOR. TERMINATE LEADS USING #8 RING TERMINALS.
 12. T/C EXTENSION LEAD COLORS DEPENDENT ON PRODUCT SUPPLIED.
 13. THESE SWITCHES USED FOR ENGINE SETUP ONLY, AND ARE NOT SUPPLIED TO END USER.
 14. INSTALL AS SHOWN: METRI-PACK CONNECTOR P/N'S: MALE HOUSING 12129615, LOCK - 12052845, MALE TERMINAL - 12045773-L. SEE CHART FOR APPROPRIATE CABLE SEAL P/N.
 15. INSTALL AS SHOWN: METRI-PACK CONNECTOR P/N'S: FEMALE HOUSING 12110293, LOCK - 12052845, FEMALE TERMINAL - 12048074-L. CAVITY PLUG - 12059168. SEE CHART FOR APPROPRIATE CABLE SEAL P/N.
 16. USE PLUG TO SEAL ALL UNUSED CONNECTOR CAVITIES.
 17. INSTALL AS SHOWN: METRI-PACK 150 2F CONNECTOR P/N'S: HOUSING 12052641, LOCK - 12052634, FEMALE TERMINAL - 12048074-L. SEE CHART FOR APPROPRIATE CABLE SEAL P/N.
 18. THE MAIN CONTROL PANEL ENGINE CONTROL SWITCH MUST BE IN THE "ON" POSITION TO ENABLE OPTIONAL FLYBRIDGE PANELS' START AND STOP CONTROLS.
 19. REMOVE CONDUCTORS FROM CONNECTOR X03, TERM.'S R, S, T, W & X. CONNECT AS SHOWN.
 20. INSTALL P/N 22-41060 NEAR CONNECTOR X03. NOTE DIODE ORIENTATION. COVER SOLDER JOINTS WITH BLACK HEAT SHRINK TUBING, COVER DIODE BODY WITH TRANSLUCENT HEAT SHRINK TUBING.
 21. ENGINE ROOM PANEL CONNECTOR IS TO BE INSTALLED NO MORE THAN ONE FOOT FROM 21 PIN CONNECTOR LOCATION. USE DELPHI WEATHER-PACK HOUSING, P/N 12015799, F. TERM. 12124580, SEAL 12015323. CAP WITH HOUSING 12010975, M. TERM 12124582, SEAL 12015323, PLUG 12010300. JUMPER CAP TERMINALS "A" AND "B". PLUG ALL UNUSED CAVITIES.
 22. IF NO ENGINE ROOM PANEL IS CONNECTED INSTALL ENGINE CONNECTOR CAP WITH TERMINALS "A" AND "B" JUMPERED, AS SHOWN (SUPPLIED BY A.D.E.).
 23. LOCAL PANEL IS MOUNTED ON ENGINE AND HAS NO GAUGES. ENGINE ROOM PANEL IS MOUNTED OFF ENGINE, HAS GAUGES AND REQUIRES SECONDARY POWERVIEW CONNECTIONS.

METRI-PACK CABLE SEAL P/N CHART

CABLE DIAM. (mm ²)	REEL P/N	LOOSE P/N
.995-1.009	12124669	12084193
1.29-1.70	12052925	12048087
1.60-2.15	12089442	12089678
2.03-2.85	12052924	12048086

Northern Lights DC Wiring Diagram
 L1276
 24 Volt Standard Ground
 Drawing D-4030G



- NOTES:**
1. ALL INSTALLATION CONDUCTORS TO BE AWG 16, TYPE MTW, 600VAC, MULTISTRAND, EXCEPT TWISTED PAIRS, ENGINE WIRE HARNESS AND AS NOTED.
 2. UNLESS COLOR CODED, ALL A.D.E. INSTALLED CONDUCTORS ARE TO BE GREY AND MUST BE IDENTIFIED BY WIRE MARKER AT EACH CONNECTION POINT.
 3. MANIFOLD AIR TEMP. SENSOR EMULATOR RESISTOR INSTALLED ON "H" SERIES ENGINES ONLY. COVER RESISTOR WITH RED HEAT SHRINK TUBING.
 4. ISOLATE UNUSED CONDUCTORS USING HEAT SHRINK TUBING.
 5. CUSTOMER SUPPLIED AND CONNECTED NEUTRAL SAFETY SWITCH.
 6. ANALOGUE THROTTLE: 5000 OHMS RECOMMENDED, HOWEVER OVERALL RESISTANCE FROM 2K TO 15K SHOULD WORK. WIPER TO LOW END RESISTANCE SHOULD BE ZERO OHM MIN., 1250 OHM MAX.
 7. HIDDEN (DASHED LINES REPRESENT CUSTOMER SUPPLIED AND CONNECTED ITEMS).
 8. REMOVE CONDUCTORS FROM 21 PIN CONNECTOR, TERMINALS C, L AND M. CONNECT TO ANALOGUE THROTTLE EMULATOR CONNECTOR AS SHOWN. USE PACKARD WEATHER PACK 3-CAVITY CONNECTOR, P/N 12015793, WITH MALE TERMINALS, P/N 12124582 AND CABLE SEAL P/N 12015323. LOCATE ASSEMBLY NEAR 21 PIN CONNECTOR.
 9. IF NO FLYBRIDGE PANEL IS USED, INSTALL 120 OHM TERMINATOR ON MAIN CONTROL PANEL ALARM HORN, CONNECTOR "B".
 10. OPTIONAL AUXILIARY PANEL CONNECTIONS: REMOVE STANDARD HARNESS CONNECTIONS AT X03, TERM.'S H, K, N AND P AS SHOWN.
 11. REMOTE LOUD ALARM HORN LEADS ARE TO EXTEND APPROXIMATELY SIX FEET FROM 21 PIN CONNECTOR LOCATION. COVER WITH 1/4" CONVOLUTED CONDUIT. BUNDLE (LOOP) SIX FOOT RUN. SECURE WITH WIRE TIES AND HANG BUNDLE NEAR 21 PIN CONNECTOR. TERMINATE LEADS USING #8 RING TERMINALS.
 12. T/C EXTENSION LEAD COLORS DEPENDENT ON PRODUCT SUPPLIED.
 13. THESE SWITCHES USED FOR ENGINE SETUP ONLY, AND ARE NOT SUPPLIED TO END USER.
 14. INSTALL AS SHOWN: METRI-PACK CONNECTOR P/N'S: MALE HOUSING - 12129615, LOCK - 12052845, MALE TERMINAL - 12045773-L. SEE CHART FOR APPROPRIATE CABLE SEAL P/N.
 15. INSTALL AS SHOWN: METRI-PACK CONNECTOR P/N'S: FEMALE HOUSING - 12110293, LOCK - 12052845, FEMALE TERMINAL - 12048074-L. CAVITY PLUG - 12059168. SEE CHART FOR APPROPRIATE CABLE SEAL P/N.
 16. USE PLUG TO SEAL ALL UNUSED CONNECTOR CAVITIES.
 17. INSTALL AS SHOWN: METRI-PACK 150 2F CONNECTOR P/N'S: HOUSING 12052641, LOCK - 12052634, FEMALE TERMINAL 12048074-L. SEE CHART FOR APPROPRIATE CABLE SEAL P/N.
 18. THE MAIN CONTROL PANEL ENGINE CONTROL SWITCH MUST BE IN THE "ON" POSITION TO ENABLE OPTIONAL FLYBRIDGE PANELS' START/STOP CONTROLS.
 19. REMOVE CONDUCTORS FROM CONNECTOR X03, TERM.'S R, S, T, W & X. CONNECT AS SHOWN.
 20. INSTALL P/N 22-41060 NEAR CONNECTOR X03, NOTE DIODE ORIENTATION. COVER SOLDER JOINTS WITH BLACK HEAT SHRINK TUBING. COVER DIODE BODY WITH TRANSLUCENT HEAT SHRINK TUBING.
 21. ENGINE ROOM PANEL CONNECTOR IS TO BE INSTALLED NO MORE THAN ONE FOOT FROM 21 PIN CONNECTOR LOCATION. USE DELPHI WEATHER-PACK HOUSING, P/N 12075799, F. TERM. 12124580, SEAL 12015323. CAP WITH HOUSING 12010975, M. TERM. 12124582, SEAL 12015323, PLUG 12010300. JUMPER CAP TERMINALS "A" AND "B". PLUG ALL UNUSED CAVITIES.
 22. IF NO ENGINE ROOM PANEL IS CONNECTED, INSTALL ENGINE CONNECTOR CAP WITH TERMINALS "A" AND "B" JUMPERED, AS SHOWN (SUPPLIED BY A.D.E.).
 23. LOCAL PANEL IS MOUNTED ON ENGINE AND HAS NO GAUGES. ENGINE ROOM PANEL IS MOUNTED OFF ENGINE, HAS GAUGES AND REQUIRES SECONDARY POWERVIEW CONNECTIONS.

METRI-PACK CABLE SEAL P/N CHART

CABLE DIAM. (mm ²)	REEL P/N	LOOSE P/N
.995-1.009	12124669	12084193
1.29-1.70	12052925	12048087
1.60-2.15	12089442	12089678
2.03-2.85	12052924	12048086

Northern Lights DC Wiring Diagram
L1276
24 Volt Isolated Ground
Drawing D-4026B