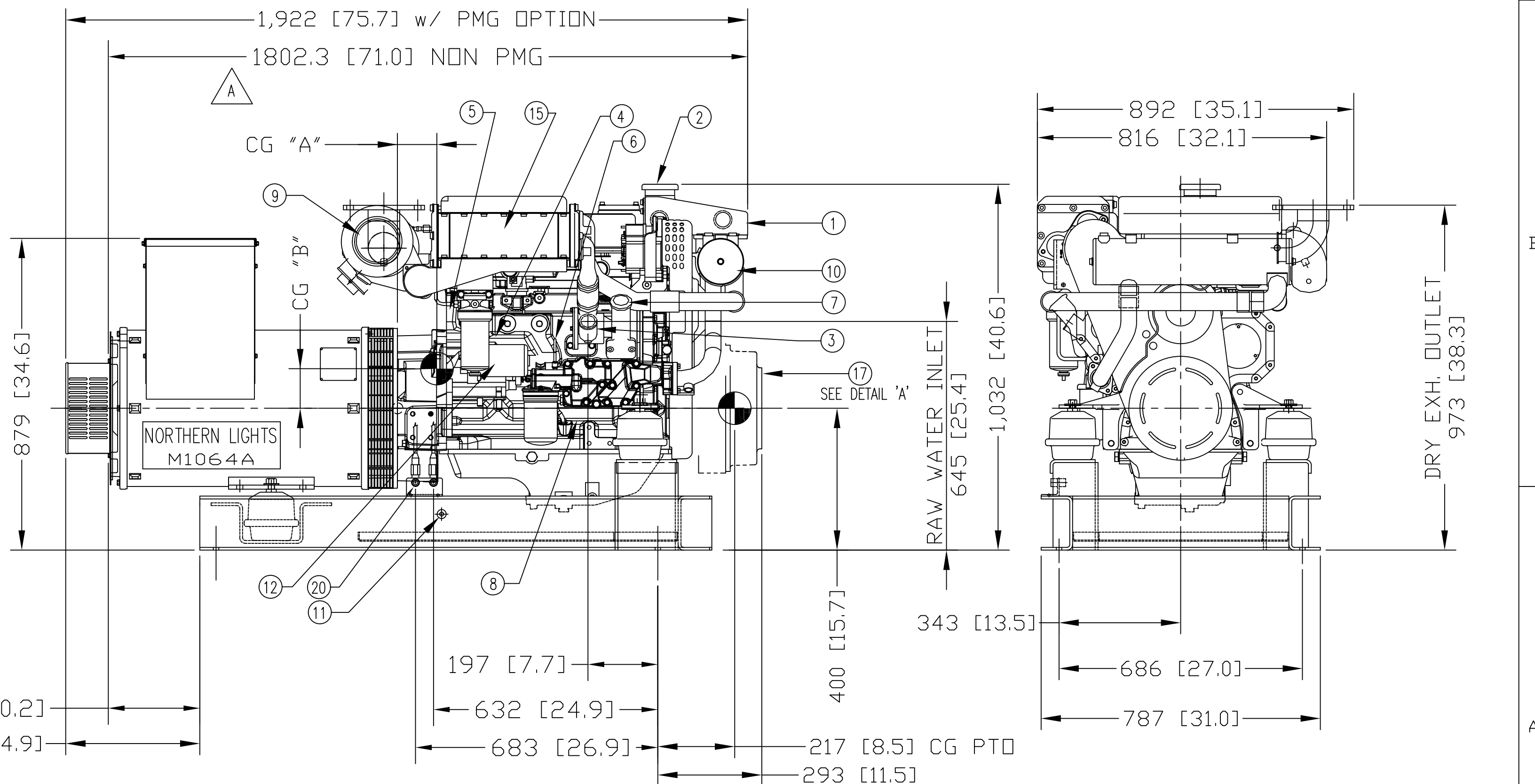
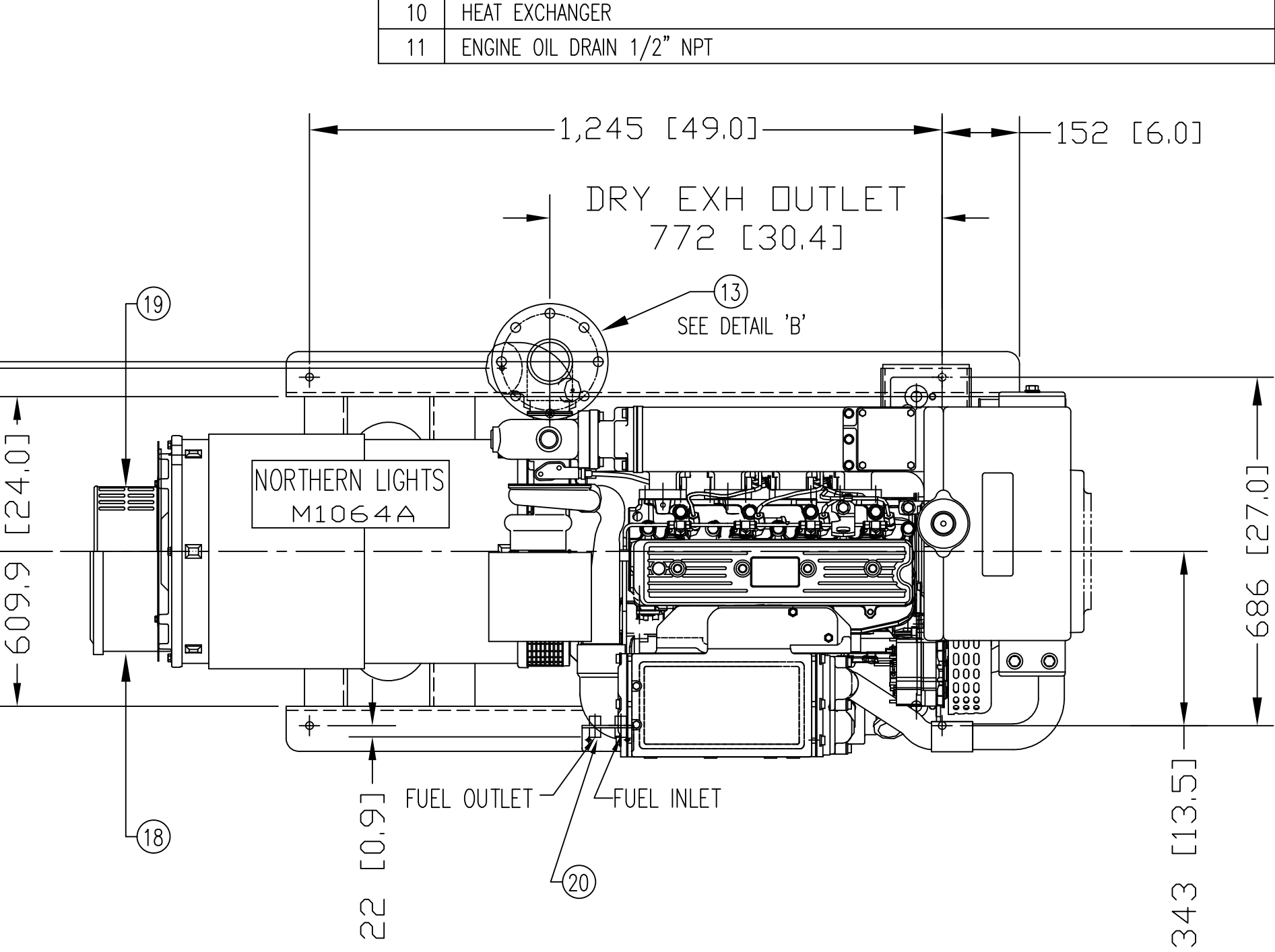
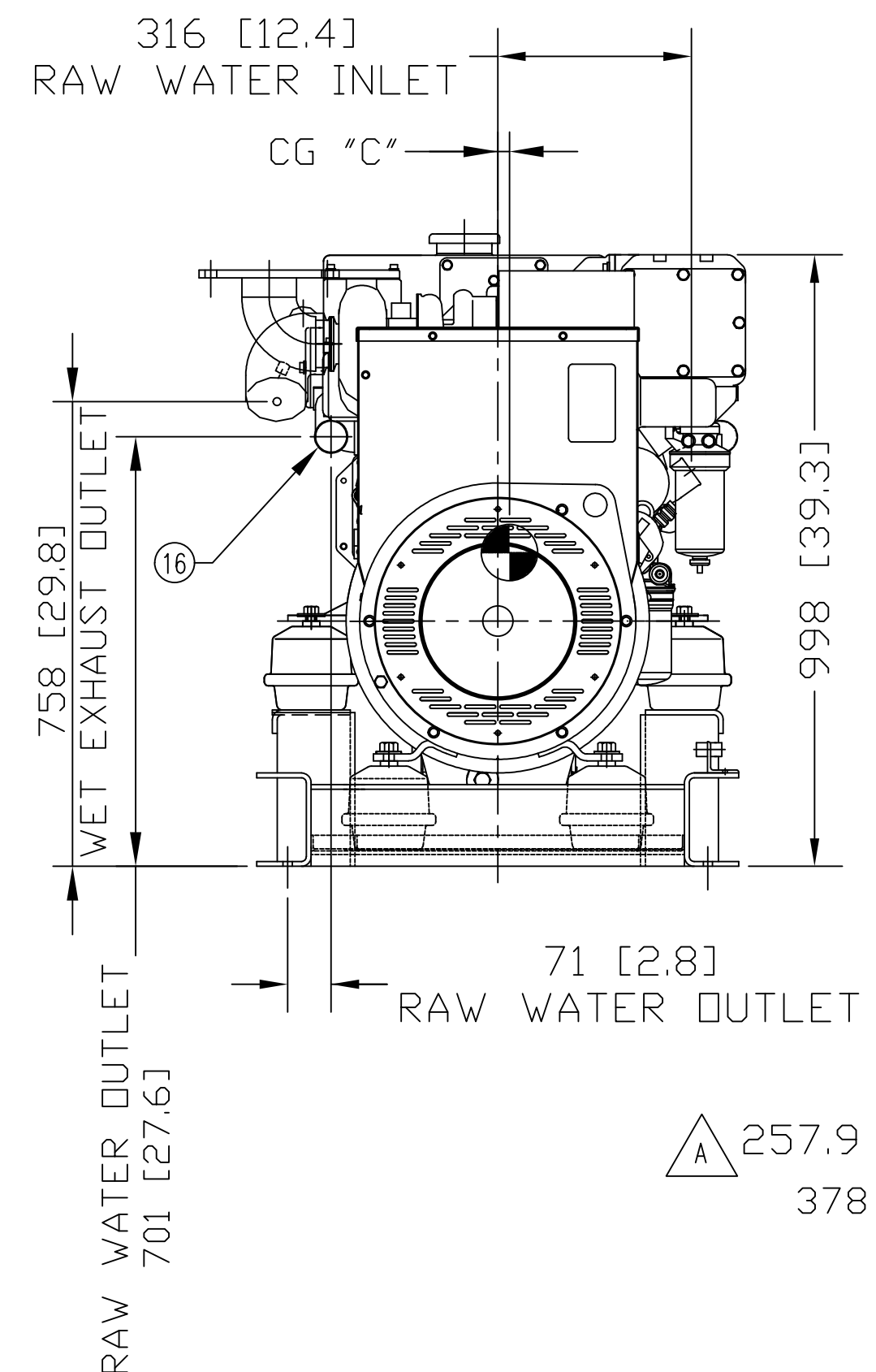
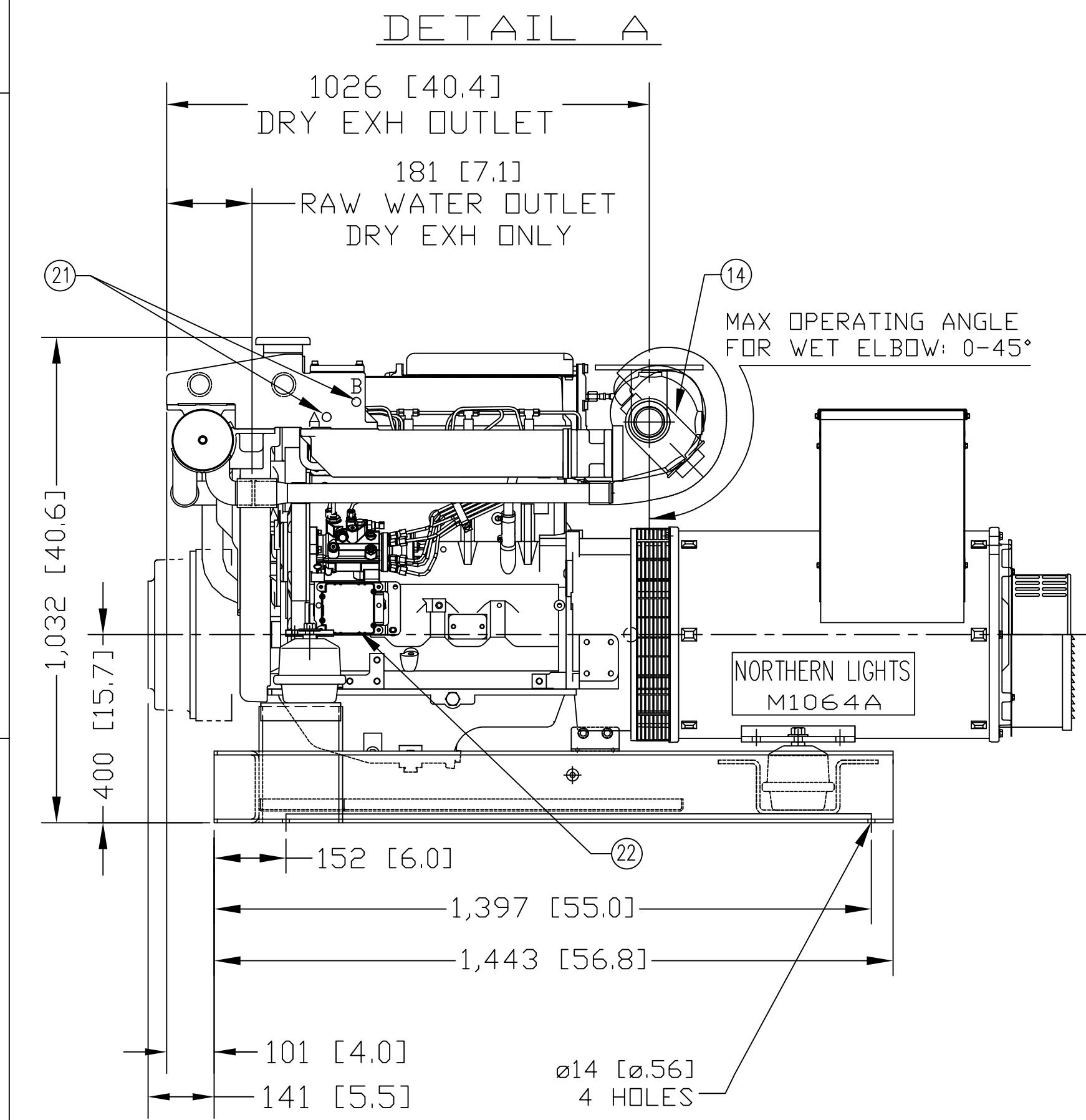
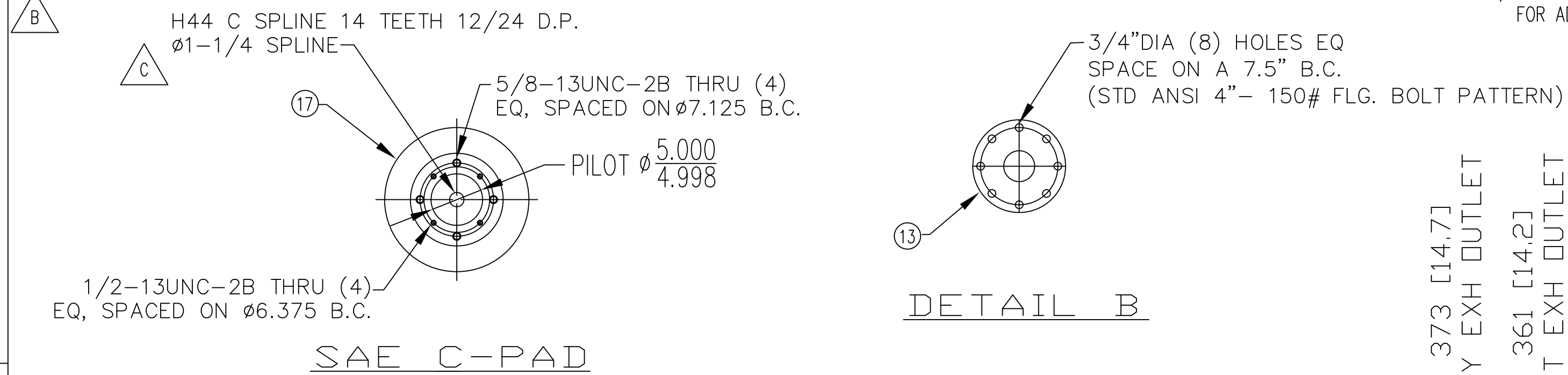


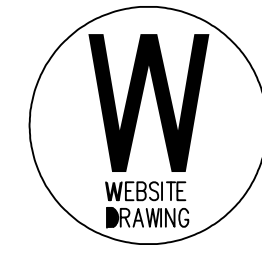
MODELS	APPROX. WT. kg [lbs]	CENTER of GRAVITY mm [in]			CENTER of GRAVITY with PMG mm [in]		
		A	B	C	A	B	C
		M1064A.11 1800 RPM 60Hz 92kw 3φ	2320 [1052]	147 [5.8]	112 [4.4]	19 (0.7)	140 [5.5]
M1064A.51 1500 RPM 50Hz 67kw 3φ	2320 [1052]	147 [5.8]	112 [4.4]	19 (0.7)	140 [5.5]	112 [4.4]	19 (0.7)

NOTE:
 1) CENTER OF GRAVITY VALUES DO NOT INCLUDE PTO/CLUTCH ASSY.
 2) PTO ADAPTER/CLUTCH ASSY (ONLY) WEIGHS APPROX. 96lbs (43.5 kg)
 3) CUSTOMER MUST RECALCULATE CG FOR ADDITION OF HYDRAULIC PUMP.

LEGEND		LEGEND	
ITEM	DESCRIPTION	ITEM	DESCRIPTION
1	EXPANSION TANK	12	STARTER
2	COOLANT FILL	13	DRY EXHAUST ELBOW 4" 150# STD. FLG
3	RAW WATER PUMP INLET (#2.0 (#51))	14	4" WET EXHAUST ELBOW (OPTION)
4	PRIMARY FUEL FILTER/WATER SEPARATOR	15	AFTERCOOLER
5	FINAL FUEL FILTER/WATER SEPARATOR	16	RAW WATER OUTLET (#51 [2.0]) - DRY EXHAUST APPLICATION ONLY.
6	CRANKCASE OIL DIPSTICK	17	PTO/CLUTCH STD MTG FACE, SAE J744C, B OR C OR 2 OR 4 BOLT (OPTION)
7	CRANKCASE OIL FILLER	18	PMG COVER - GENERATOR w/o SOUND SHIELD.
8	CRANKCASE OIL FILTER	19	PMG COVER - FOR USE WITH SOUND SHIELD OPTION.
9	AIR INLET FILTER	20	FUEL INLET / RETURN (3/8"NPT)
10	HEAT EXCHANGER	21	CONNECTION FOR WATER HEATER B= HOT WATER OUT A= RETURN TO ENGINE.
11	ENGINE OIL DRAIN 1/2" NPT	22	ECU MODULE



THE DIMENSIONS ON THIS DRAWING ARE SUBJECT TO CHANGE PLEASE CONTACT ADE TO BE SURE YOU HAVE THE MOST CURRENT REVISION.



C	5/20/08	DELETED PTO SAE B PAD, WAS H36 C SPLINE	LTP		
B	4/7/08	UPDATED KW RATING IN APPLICATION TABLE; WAS 80 KW.	LTP		
A	6/7/04	ADDED DIMS AND REFERENCE TO DAL WITH/WITHOUT PMG	LTP		
SYMBOL	DATE	DESCRIPTION	BY	CHECKED	

DRAWN		LTP	05/12/04	TITLE	
CHECKED					
SCALE		1:10			
RELEASED					
SHEETS: 1 OF 1					
UNITS OF MEASURE		MM(NCH)			

4420 14th AVE. N.W.
 Seattle, WA 98107
 (206) 789-3880
 www.northern-lights.com

NORTHERN LIGHTS

INSTALLATION DIMENSIONS
 M1064A - HYDROLASTIC MOUNT

DWG NO: D-3682 REV: C