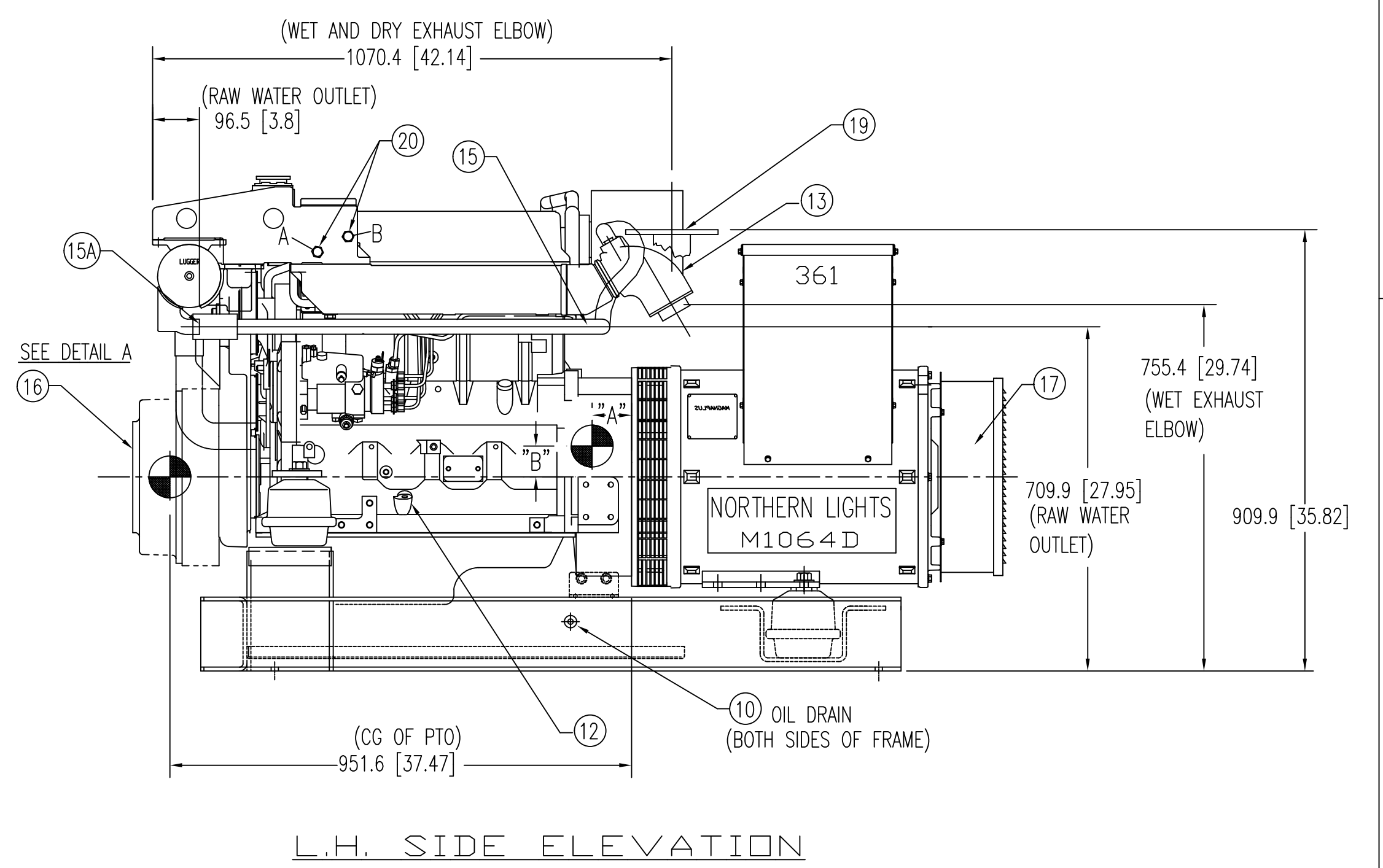
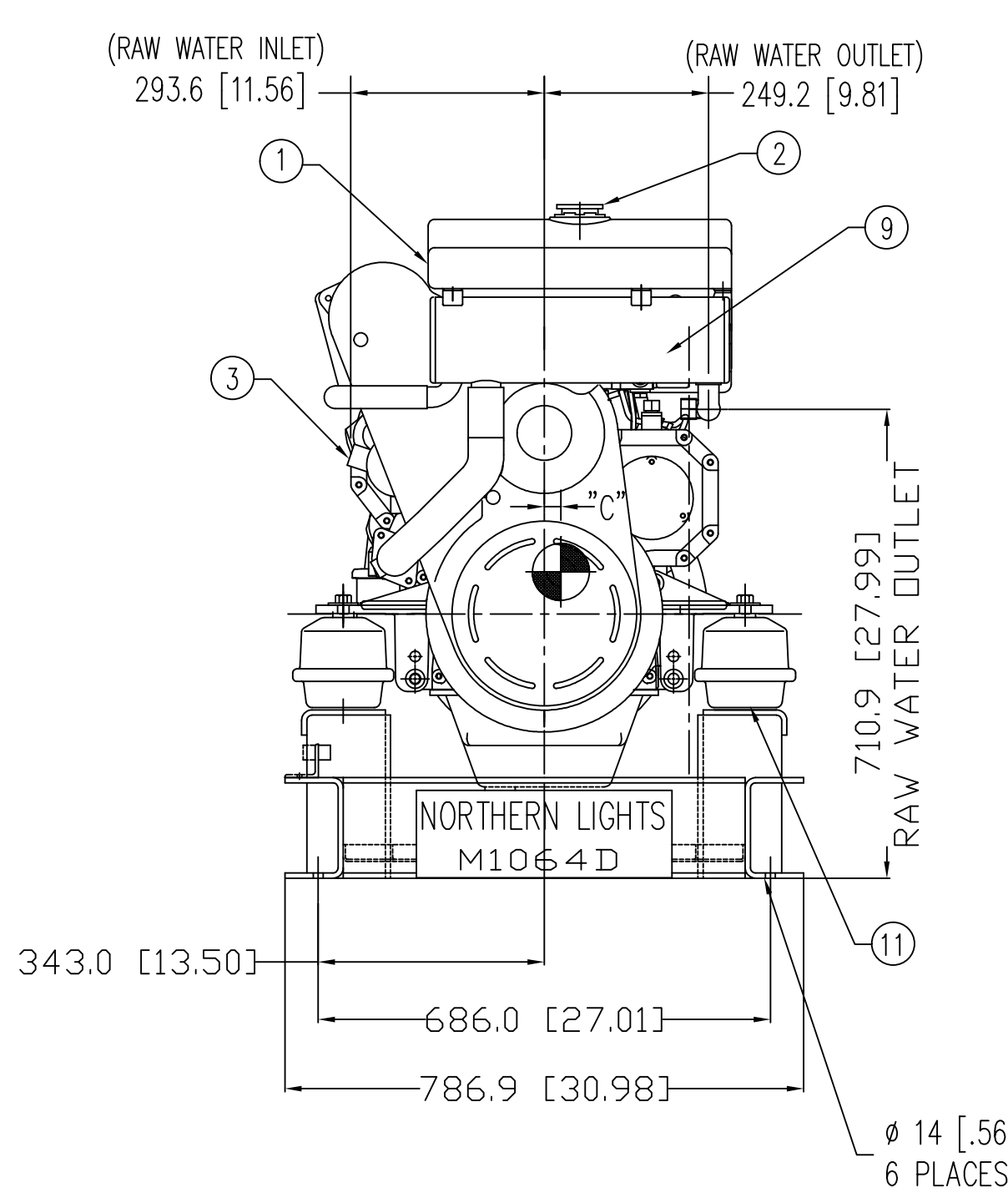
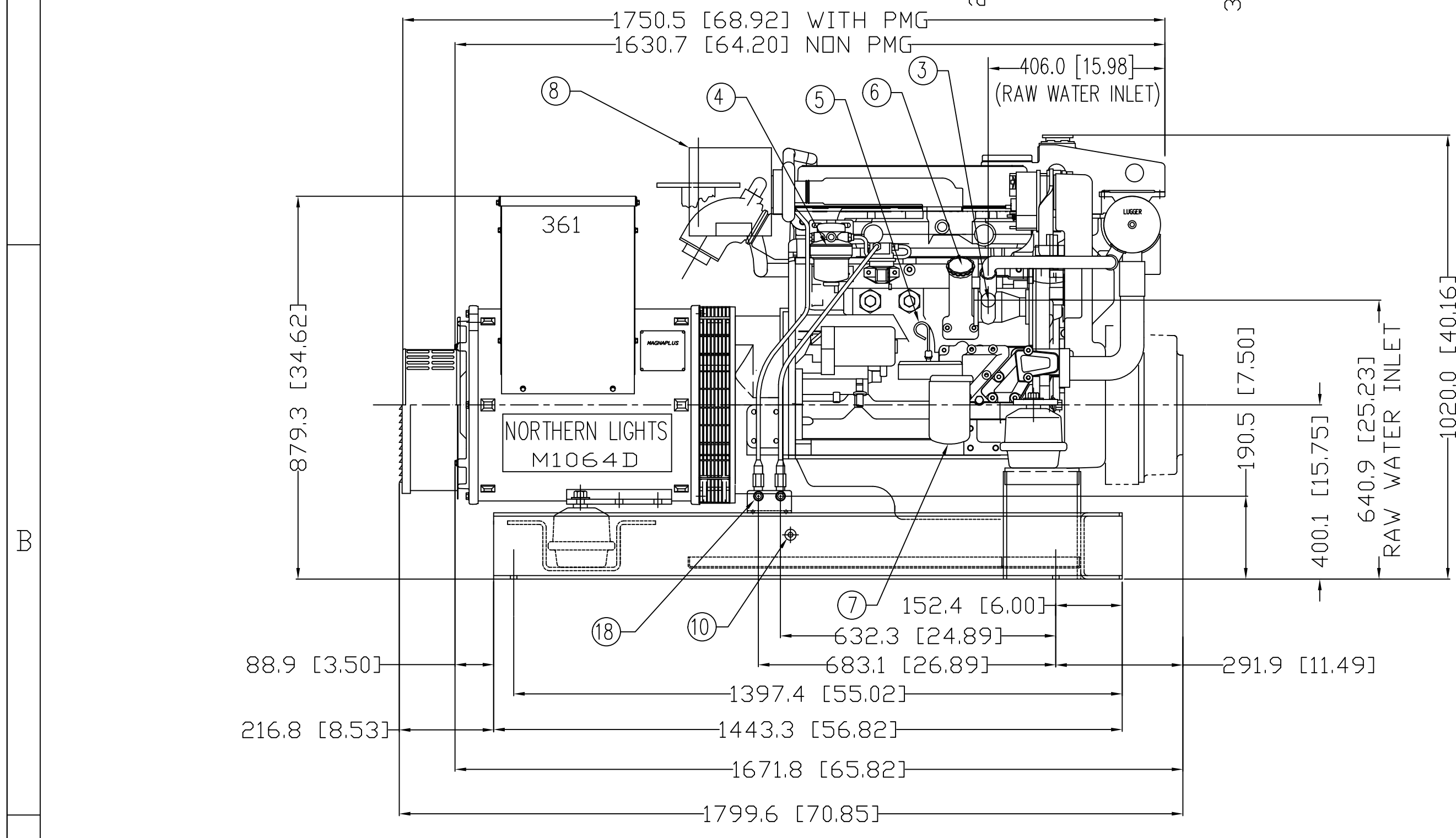
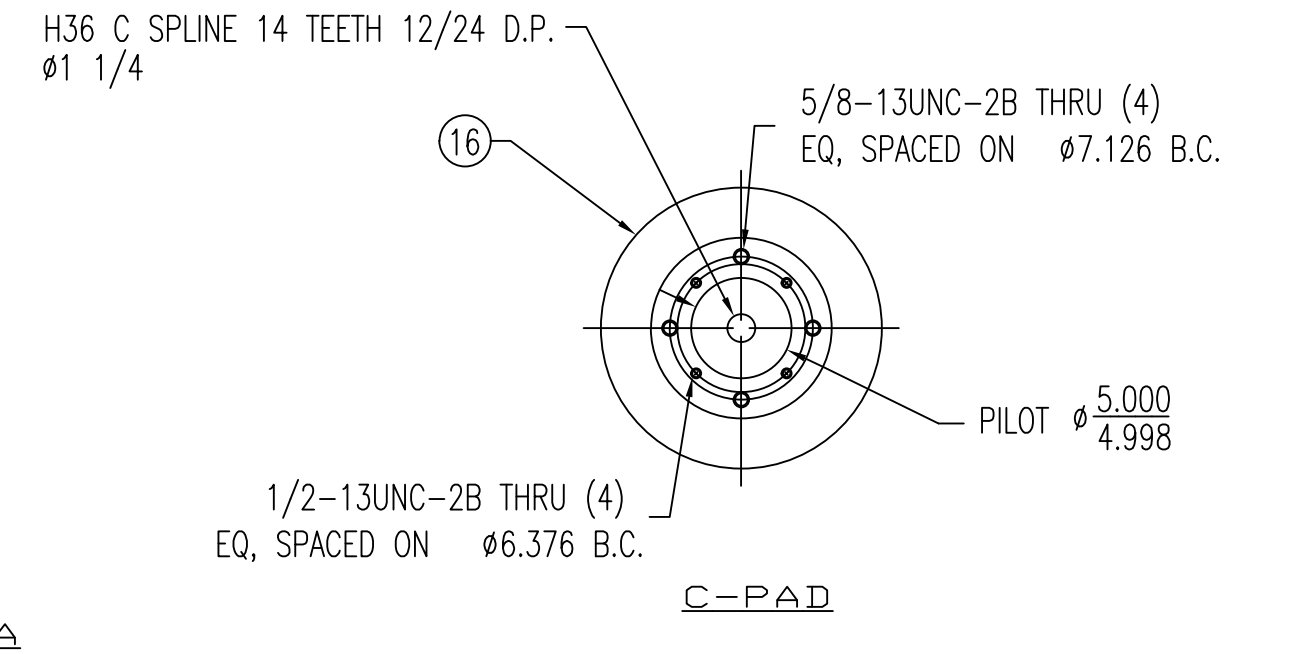
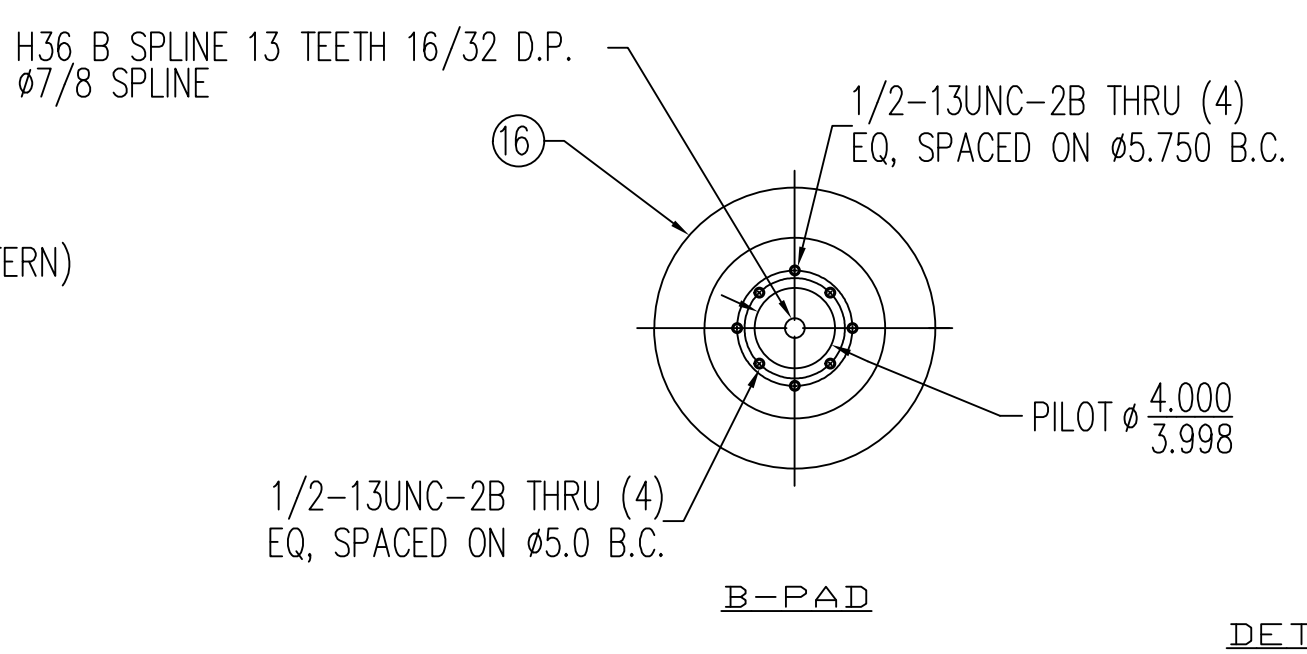
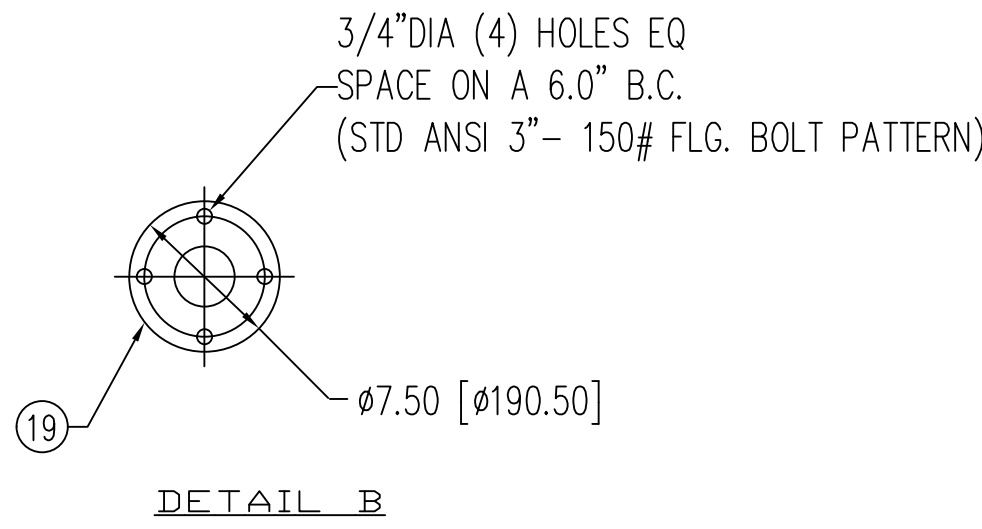
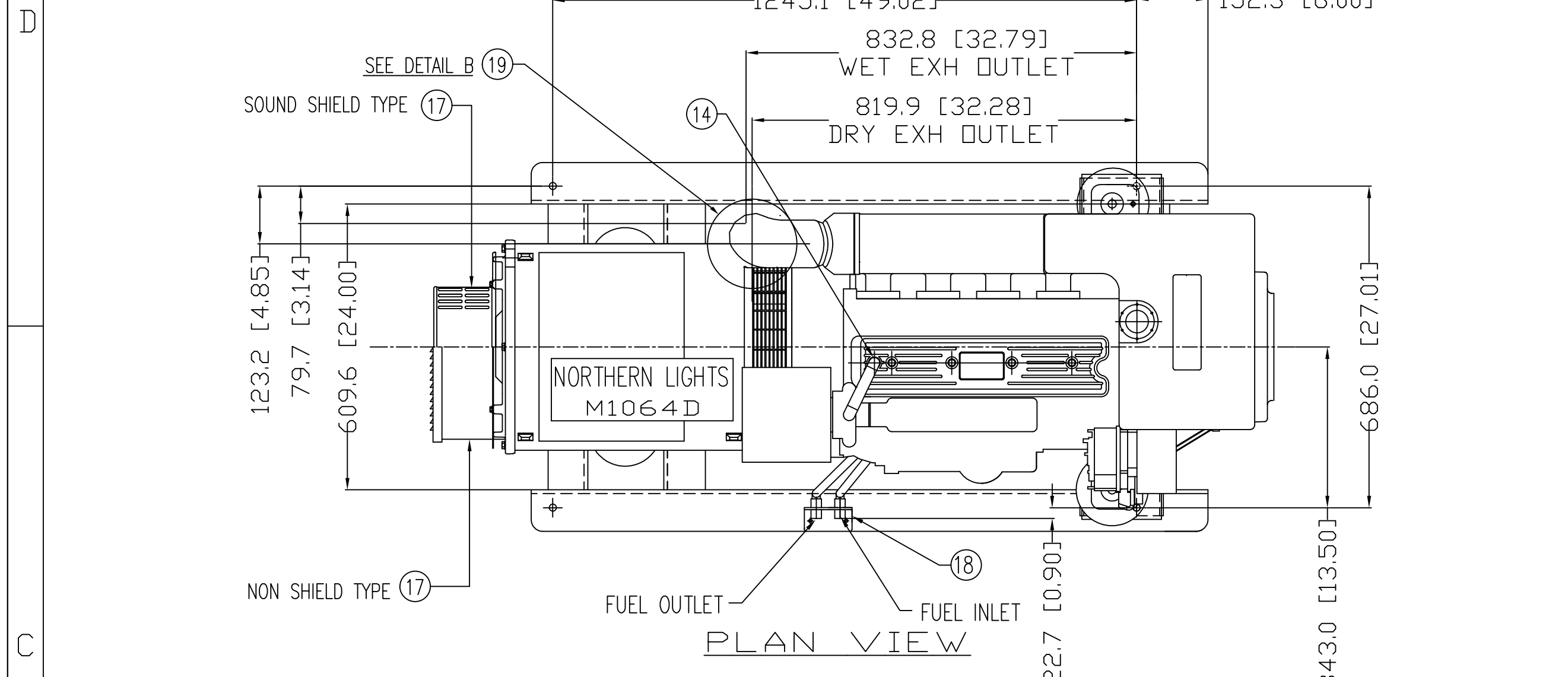


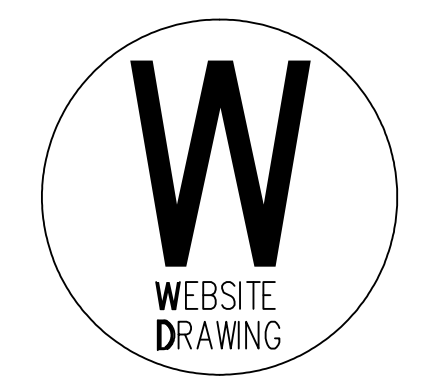
MODELS	APPROX. WT. kg [lbs]	CENTER of GRAVITY mm [in]			CENTER of GRAVITY with PMG mm [in]		
		A	B	C	A	B	C
M1064D.11 1800 RPM 60Hz 40kw 3φ	865 [1906]	182.4 [7.18]	63.5 [2.5]	50.8 [2.0]	163.8 [6.45]	63.5 [2.5]	50.8 [2.0]
M1064D.31 1800 RPM 60Hz 40kw 1φ	911 [2008]	155.45 [6.12]	53.3 [2.1]	50.8 [2.0]	138.4 [5.45]	53.3 [2.1]	50.8 [2.0]
M1064D.51 1500 RPM 50Hz 33kw 3φ	865 [1906]	182.4 [7.18]	63.5 [2.5]	50.8 [2.0]	163.8 [6.45]	63.5 [2.5]	50.8 [2.0]
M1064D.71 1500 RPM 50Hz 33kw 1φ	911 [2008]	155.45 [6.12]	53.3 [2.1]	50.8 [2.0]	138.4 [5.45]	53.3 [2.1]	50.8 [2.0]

NOTE:
 1) CENTER OF GRAVITY VALUES DO NOT INCLUDE PTO/CLUTCH ASSY.
 2) PTO ADAPTER/CLUTCH ASSY (ONLY) WEIGHS APPROX. 96lbs (43.5 kg)
 3) CUSTOMER MUST RECALCULATE CG FOR ADDITION OF HYDRAULIC PUMP.

LEGEND		LEGEND	
ITEM	DESCRIPTION	ITEM	DESCRIPTION
1	EXPANSION TANK	11	HYDROLASTIC MOUNT
2	COOLANT FILL	12	ALTERNATE DIPSTICK LOCATION (OPTION)
3	RAW WATER PUMP INLET (Ø1.25 [Ø31.8])	13	4" WET EXHAUST ELBOW (OPTION)
4	FUEL FILTER	14	CLOSED CRANKCASE VENTILATION SYSTEM
5	CRANKCASE OIL DIPSTICK	15	RAW WATER OUTLET TUBE (Ø1.25"[31.8]) - WET EXHAUST.
6	CRANKCASE OIL FILLER	15A	RAW WATER OUTLET (Ø1.25"[31.8]) - DRY EXHAUST.
7	CRANKCASE OIL FILTER	16	PTO/CLUTCH STD MTG FACE, SAE J744C, B OR C OR 2 OR 4 BOLT (OPTION)
8	AIR INLET FILTER	17	PMG COVER - (OPTION, AS REQUIRED, BOTH STYLES SHOWN)
9	HEAT EXCHANGER	18	FUEL INLET / RETURN (3/8"NPT)
10	ENGINE OIL DRAIN 1/2" NPT	19	DRY EXHAUST ELBOW 3" 150# STD. FLG
		20	CONNECTION FOR WATER HEATER B= HOT WATER OUT A= RETURN TO ENGINE.



THE DIMENSIONS ON THIS DRAWING ARE SUBJECT TO CHANGE PLEASE CONTACT ADE TO BE SURE YOU HAVE THE MOST CURRENT REVISION.



REVISIONS			
SYMBOL	DATE	DESCRIPTION	CHECKED
B	8/5/04	CORRECTED ANY DIMS SHOWN AS IN [MM] TO MM [IN]	LTP
A	5/21/04	UPDATE APPLICATION TABLE	LTP

DRAWN:	LTP	5/11/04
CHECKED:		
APPROVED:		
SCALE:	1:10	(.1" = 1")
RELEASED:		
SHEETS:	1	OF 1
UNITS OF MEASURE:	MM [INCH]	
REVISE ON CAD ONLY		

TITLE:	INSTALLATION DIMENSIONS		
	M1064D/361PSL/3Ø/1Ø 60/50 Hz/MECH FI/ H.E./HYDRO MT.		
P/N:	SEE TABLE	DWG. NO.:	D-3685
REV.:			B

4420 14th AVE. N.W.
 Seattle, WA 98107
 (206) 789-3880
 www.northern-lights.com