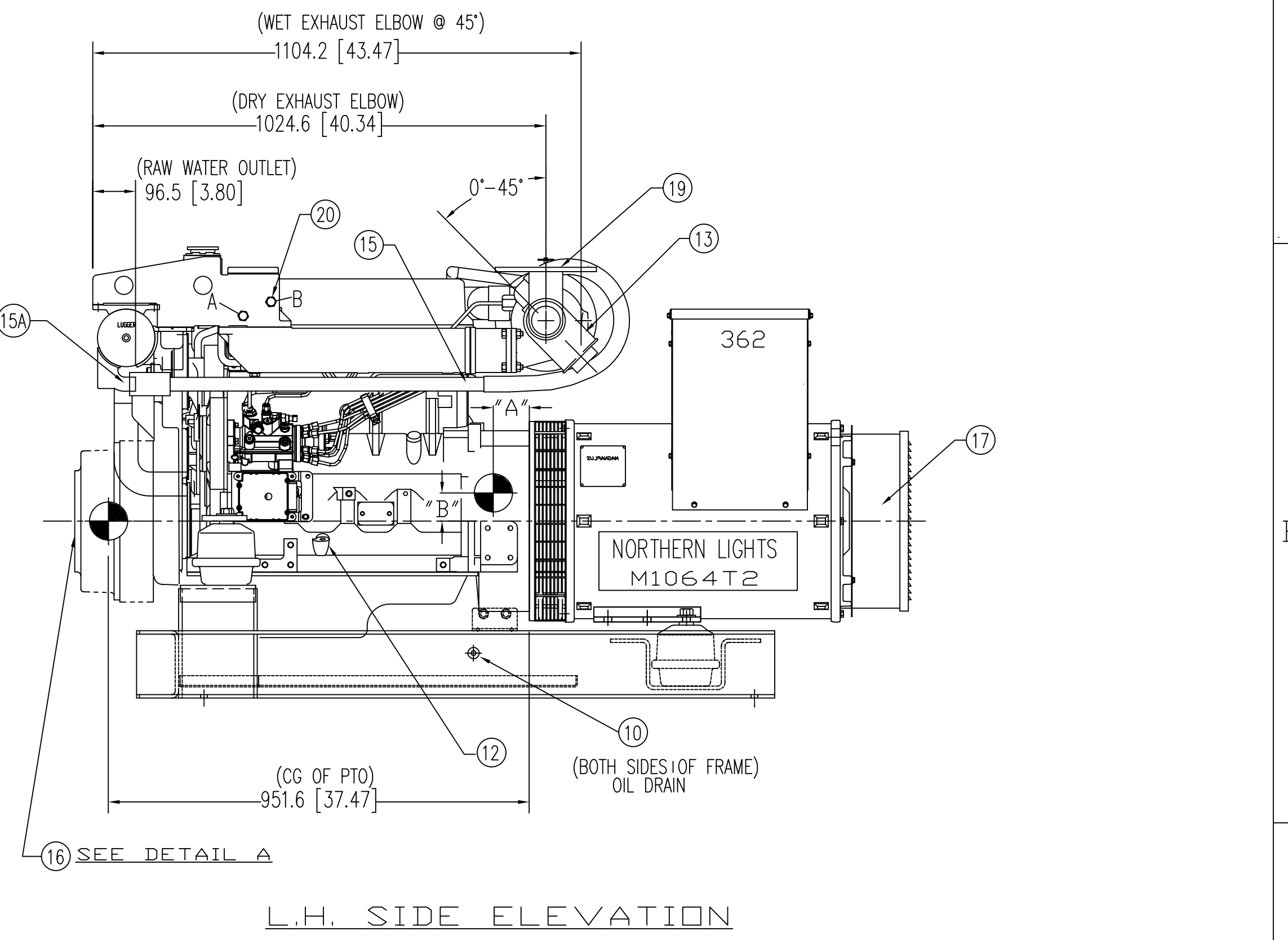
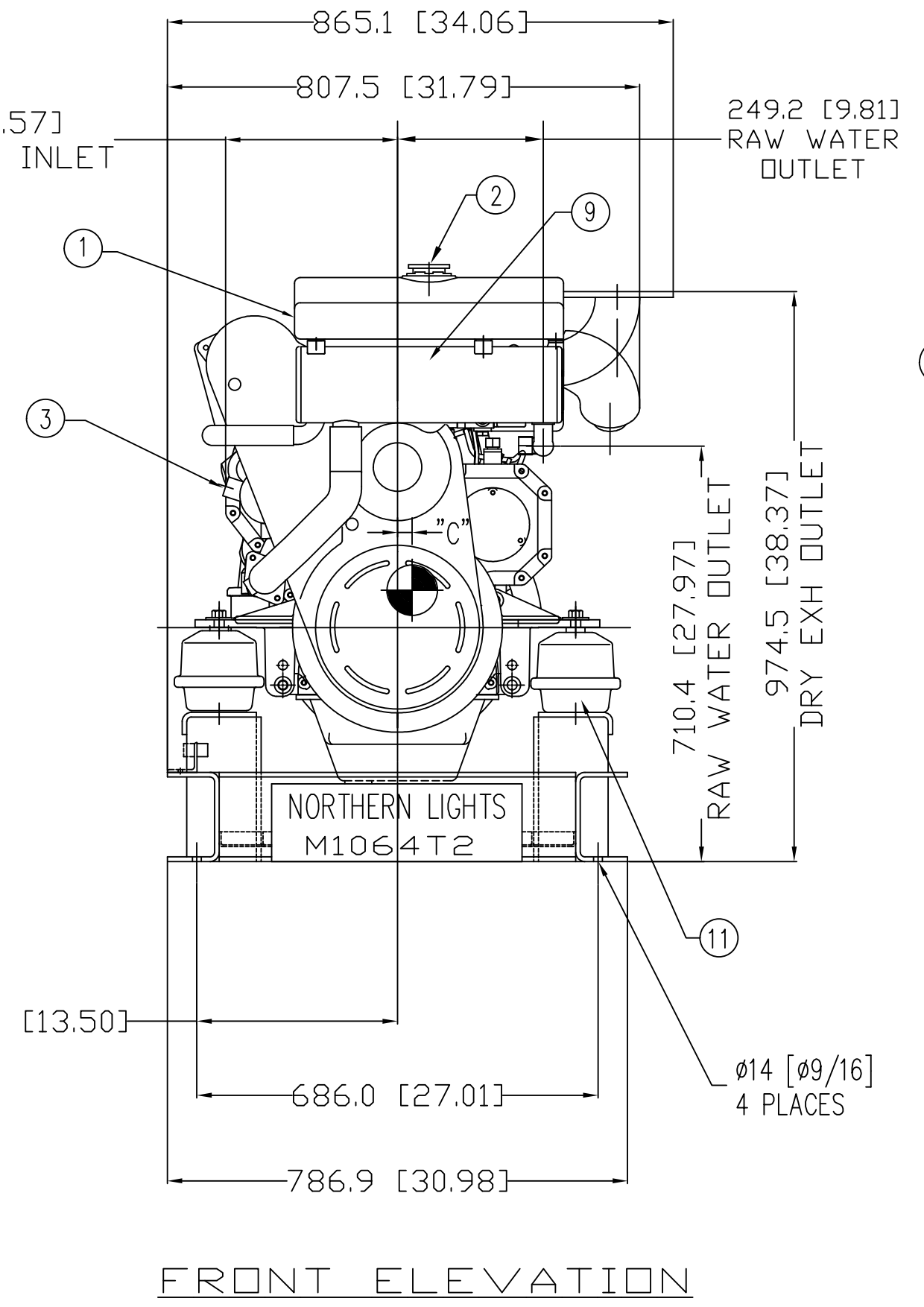
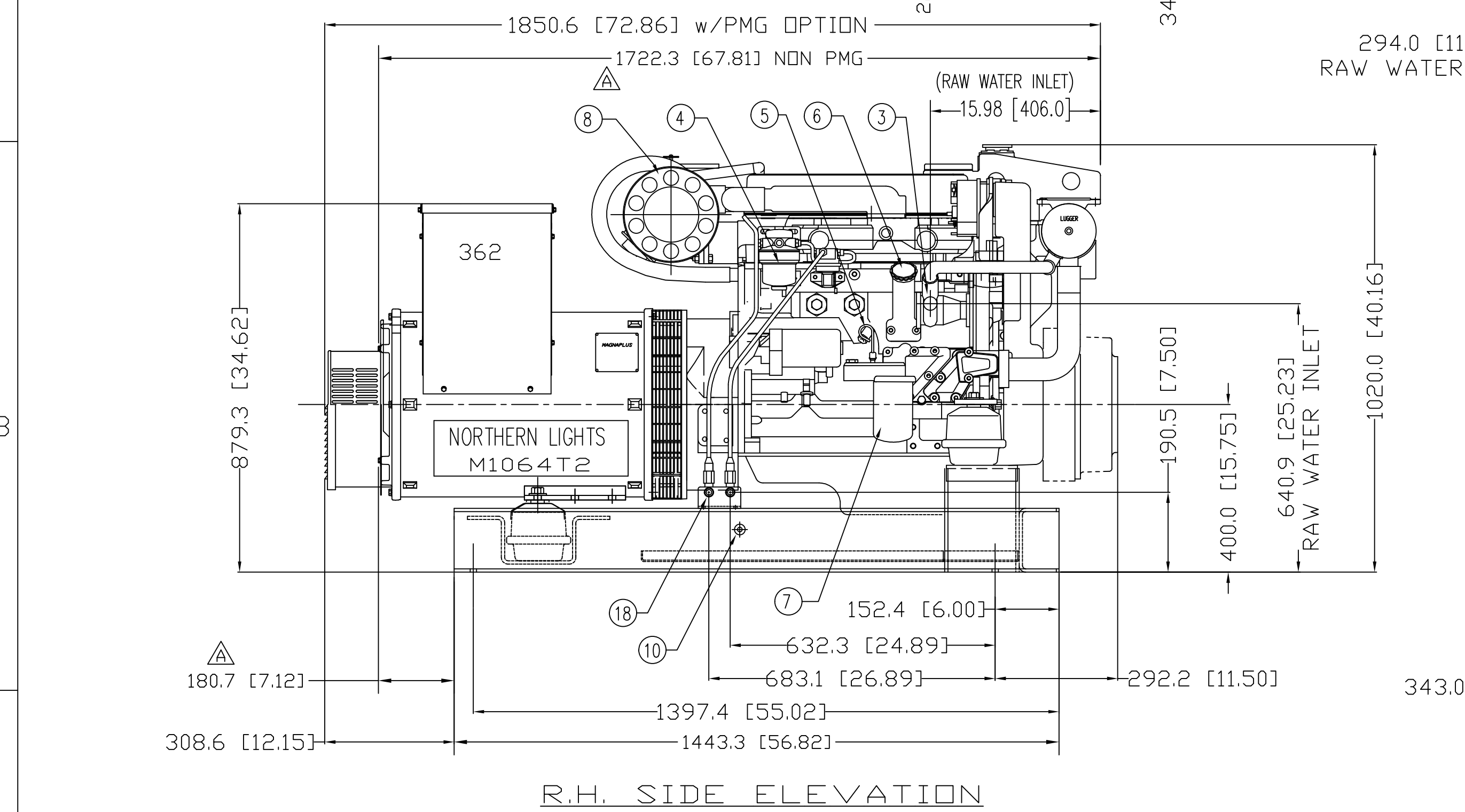
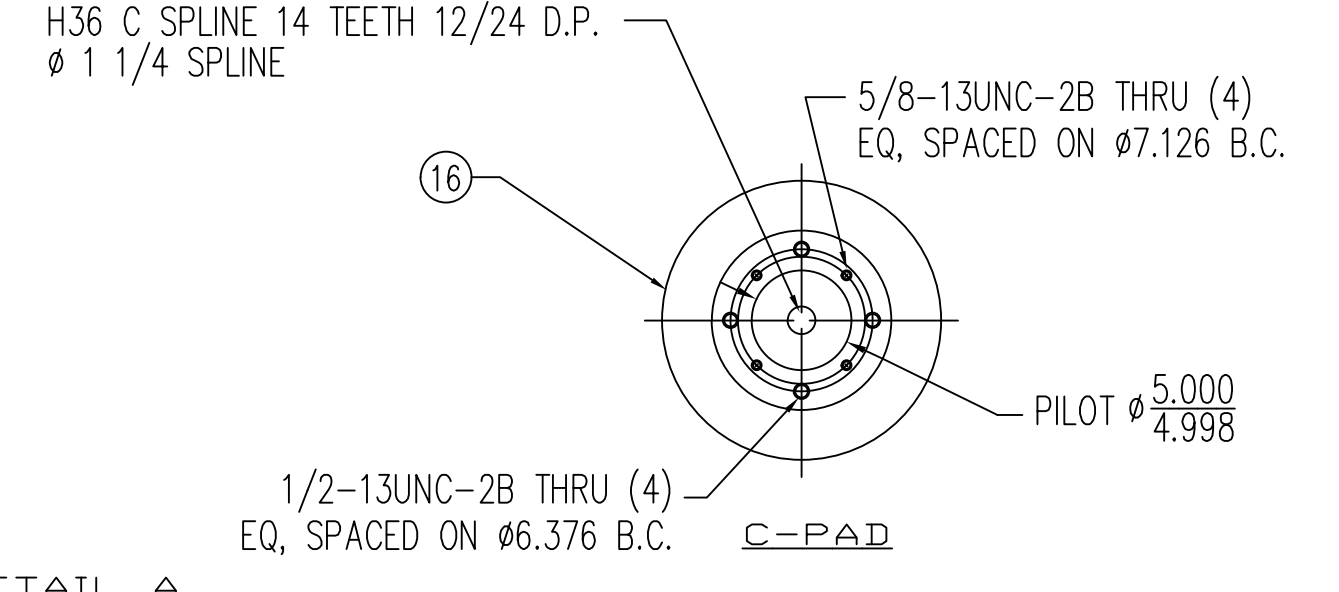
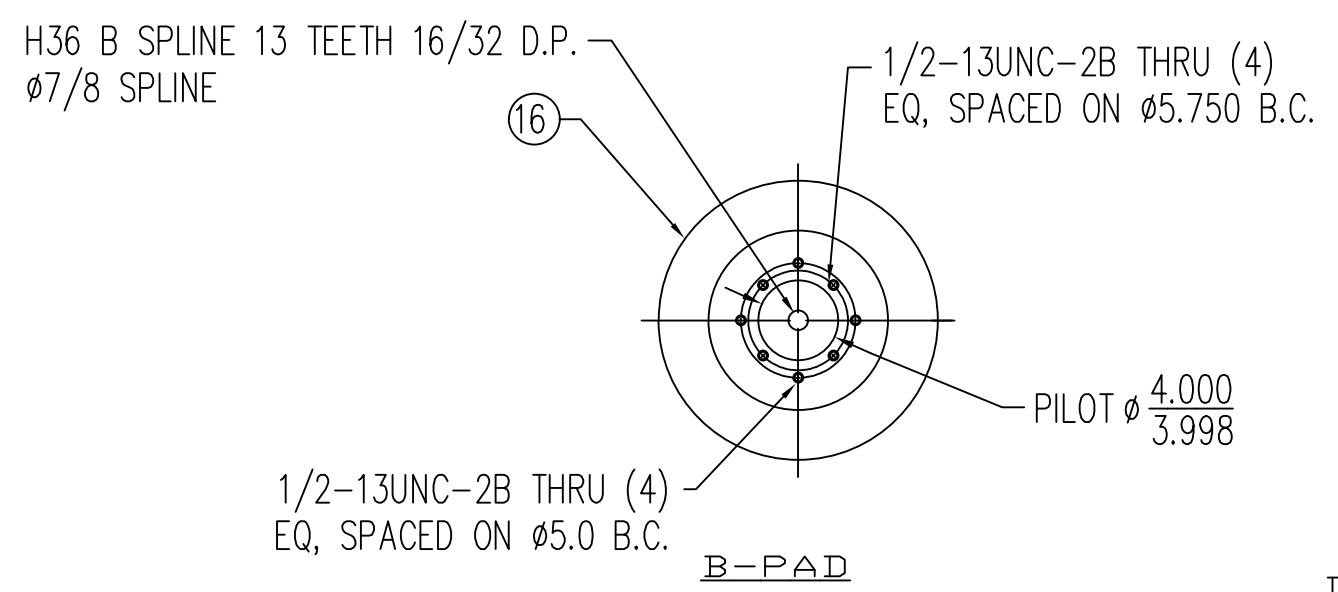
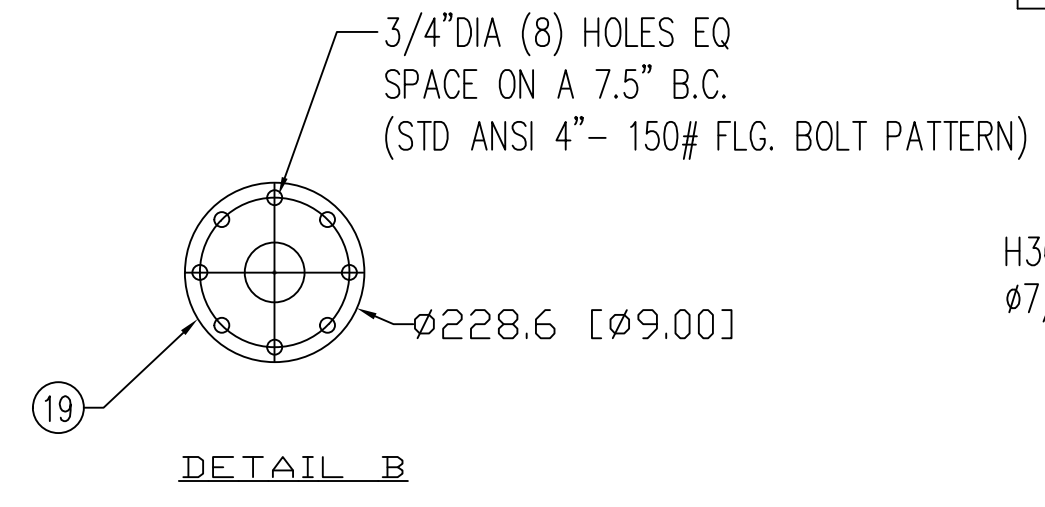
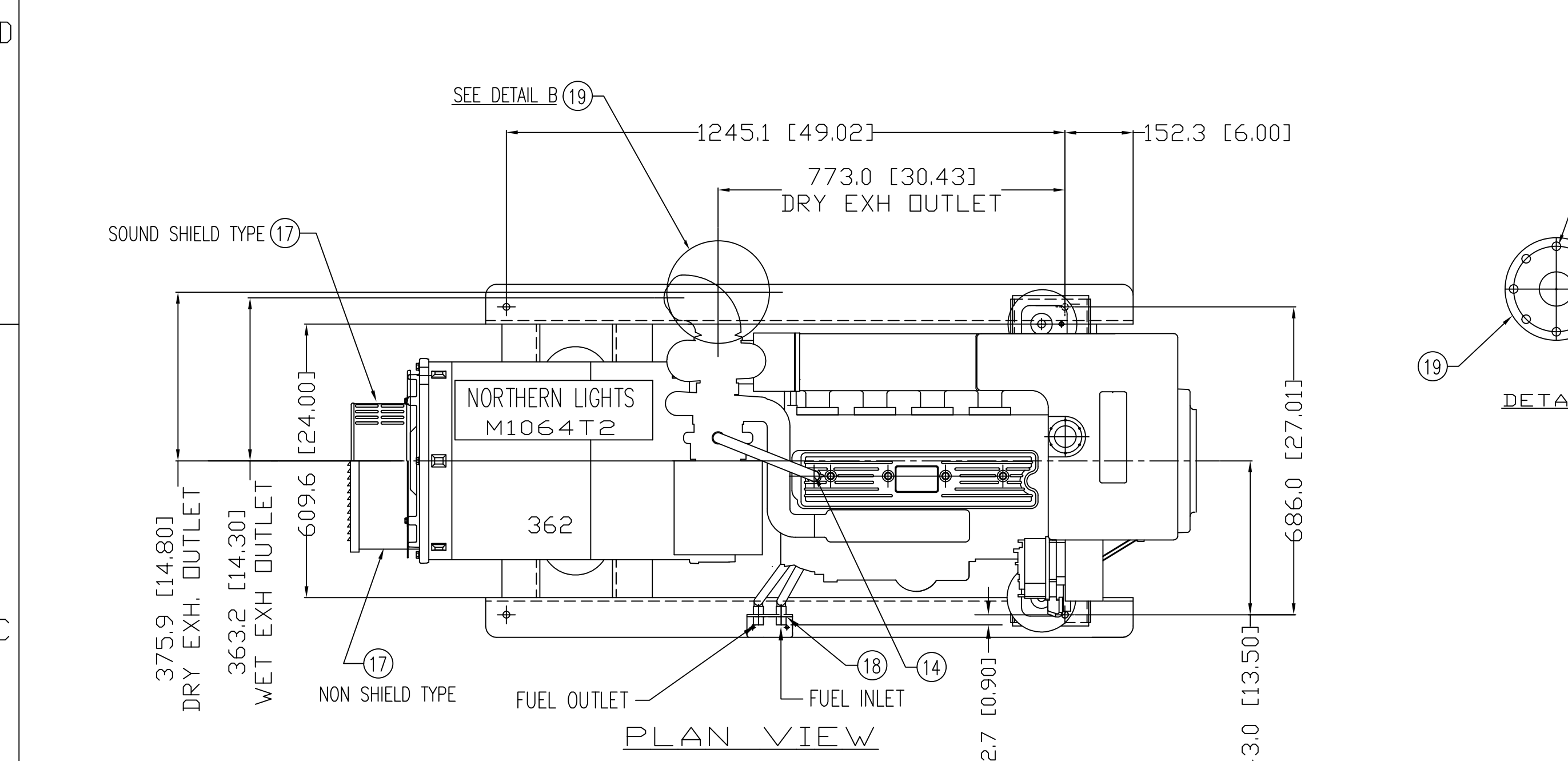


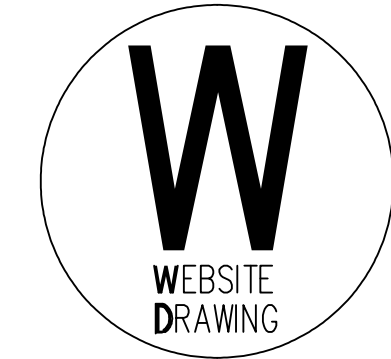
MODELS	APPROX. WT. KG [lbs]	CENTER of GRAVITY mm [in]			CENTER of GRAVITY with PMG mm [in]		
		A	B	C	A	B	C
M1064T2.11 1800 RPM 60Hz 65kw 3φ	972.50 [2144]	101.09 [3.98]	63.5 [2.5]	50.8 [2.0]	84.6 [3.33]	63.5 [2.5]	50.8 [2.0]
M1064T2.51 1500 RPM 50Hz 55kw 3φ	972.50 [2144]	101.09 [3.98]	63.5 [2.5]	50.8 [2.0]	84.6 [3.33]	63.5 [2.5]	50.8 [2.0]

NOTE:
 1) CENTER OF GRAVITY VALUES DO NOT INCLUDE PTO/CLUTCH ASSY.
 2) PTO ADAPTER/CLUTCH ASSY (ONLY) WEIGHS APPROX. 96lbs (43.5 kg)
 3) CUSTOMER MUST RECALCULATE CG FOR ADDITION OF HYDRAULIC PUMP.

LEGEND	
ITEM	DESCRIPTION
1	EXPANSION TANK
2	COOLANT FILL
3	RAW WATER PUMP INLET (Ø1.25 [Ø31.8])
4	FUEL FILTER
5	CRANKCASE OIL DIPSTICK
6	CRANKCASE OIL FILLER
7	CRANKCASE OIL FILTER
8	AIR INLET FILTER
9	HEAT EXCHANGER
10	ENGINE OIL DRAIN 1/2" NPT
11	HYDROLASTIC MOUNT
12	ALTERNATE DIPSTICK LOCATION (OPTION)
13	4" WET EXHAUST ELBOW (OPTION)
14	CLOSED CRANKCASE VENTILATION SYSTEM
15	RAW WATER OUTLET TUBE (Ø1.25" [31.8]) - WET EXHAUST.
15A	RAW WATER OUTLET (Ø1.25" [31.8]) - DRY EXHAUST.
16	PTO/CLUTCH STD MTG FACE, SAE J744C, B OR C OR 2 OR 4 BOLT (OPTION)
17	PMG COVER - (OPTION, AS REQUIRED, BOTH STYLES SHOWN)
18	FUEL INLET / RETURN (3/8"NPT)
19	DRY EXHAUST ELBOW 4" 150# STD. FLG
20	CONNECTION FOR WATER HEATER B= HOT WATER OUT A= RETURN TO ENGINE.



THE DIMENSIONS ON THIS DRAWING ARE SUBJECT TO CHANGE PLEASE CONTACT ADE TO BE SURE YOU HAVE THE MOST CURRENT REVISION.



SYMBOL	DATE	DESCRIPTION	BY	CHECKED
B	8/5/04	CORRECTED DIMS TO DISPLAY MM(INCH) IN Lh ELEVATION	LTP	
A	6/3/04	ADDED DIMS AND REFERENCE TO DAL WITH AND WITHOUT PMG	LTP	

REVISIONS				
DRAWN:	DATE	DESCRIPTION	BY	CHECKED
LTP	5/10/04			

SCALE:	1:10 (.1" = 1")
SHEETS:	1 OF 1
UNITS OF MEASURE:	MM [INCH]
REVISE ON CAD ONLY	

TITLE:	INSTALLATION DIMENSIONS
P/N:	M1064T2/362PSL/3φ/60/50 Hz/EFI DE10/ H.E./HYDRO MT.
DWG. NO.:	D-3716
REV.:	B