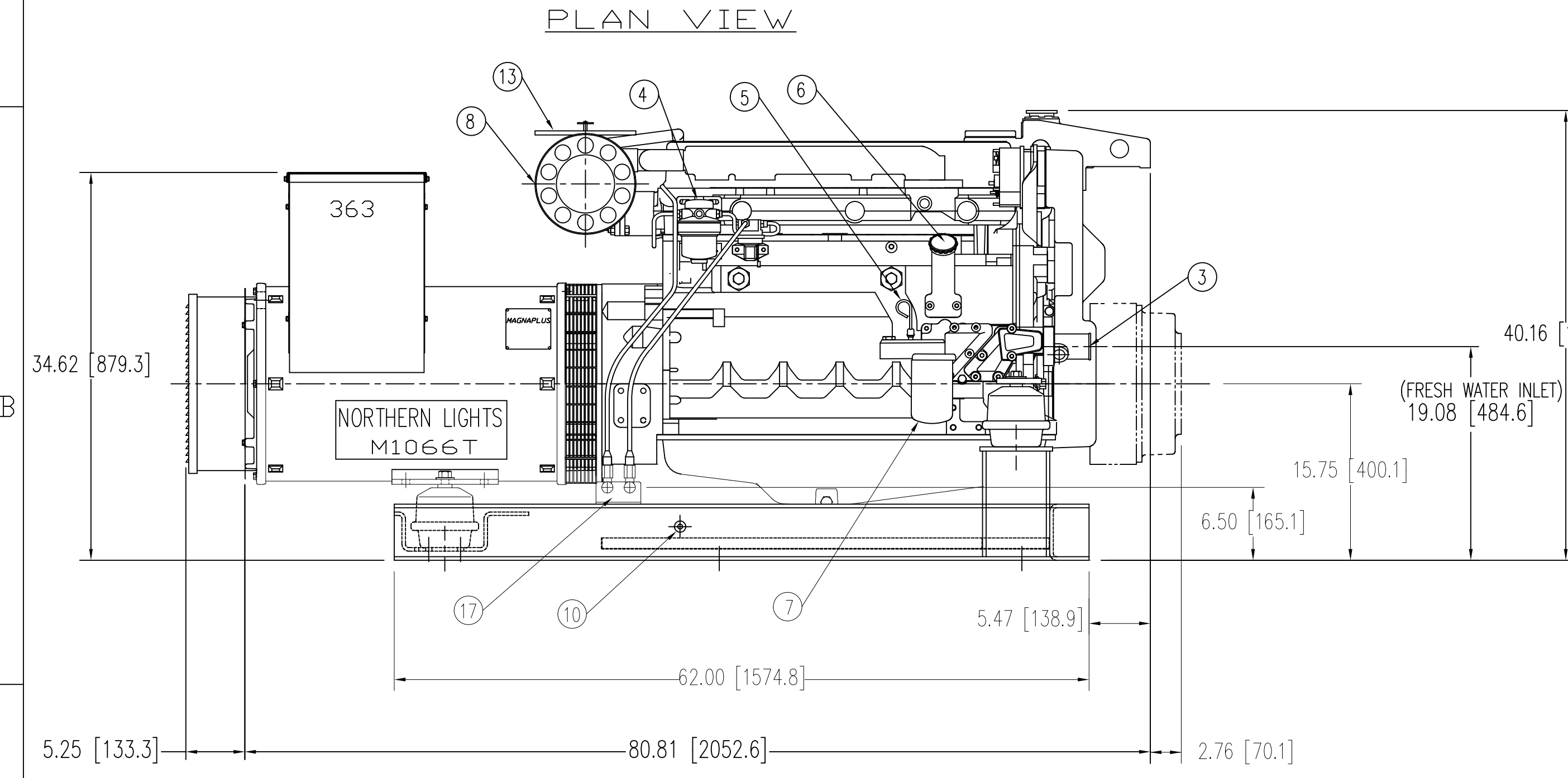
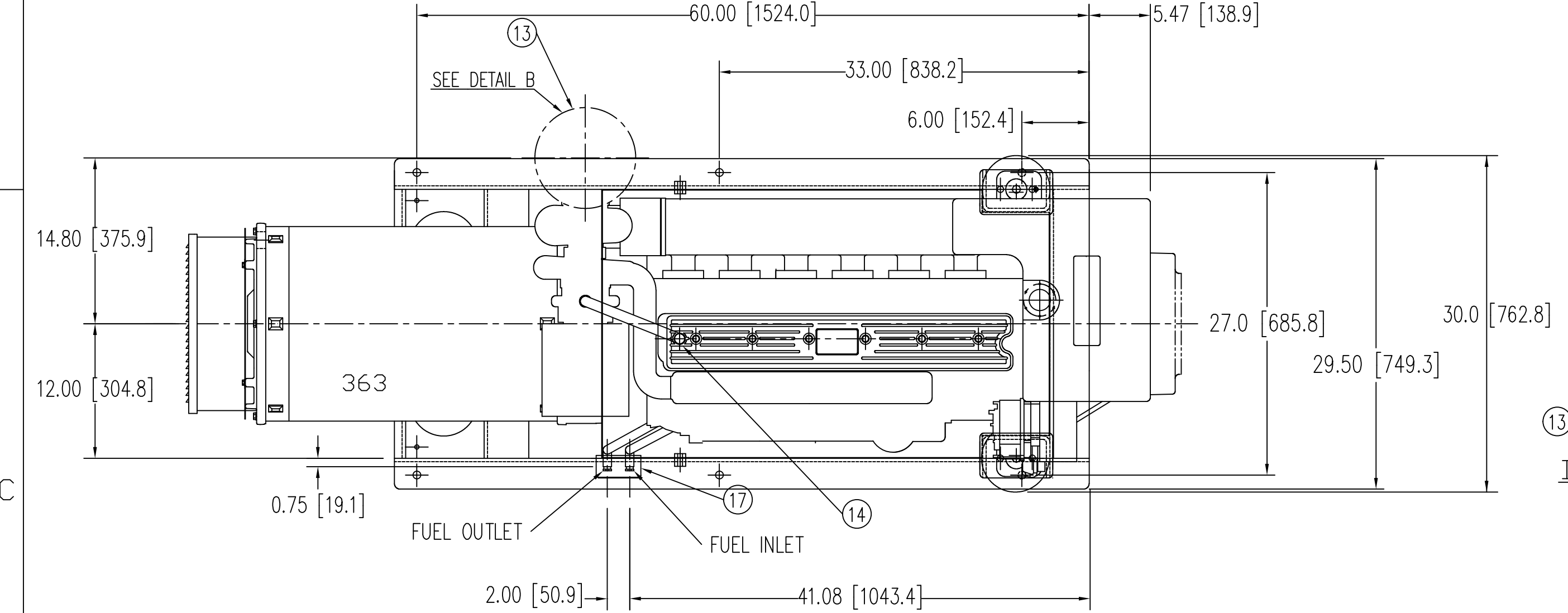


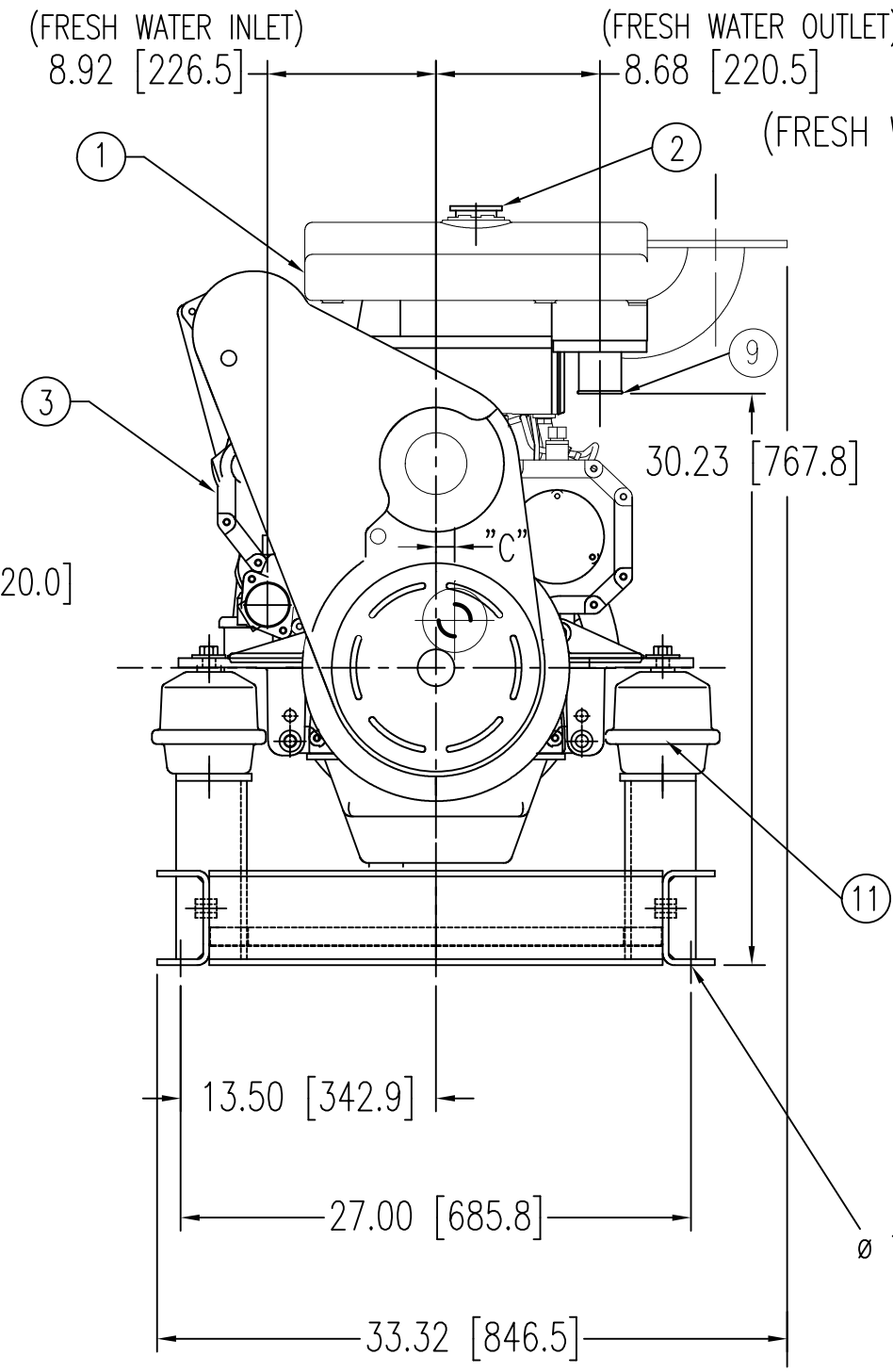
MODELS	APPROX. WT. lbs [kg]	CENTER OF GRAVITY		
		A	B	C
M1066T.21 1800 RPM 60Hz 99kw 3φ	2713 [1230.6]	6.59 [167.4]	1.7 [43.2]	.86 [22]
M1066T.61 1500 RPM 50Hz 80kw 3φ	2713 [1230.6]	6.59 [167.4]	1.7 [43.2]	.86 [22]

NOTE:  
 1) CENTER OF GRAVITY VALUES DO NOT INCLUDE PTO/CLUTCH ASSY.  
 2) PTO ADAPTER/CLUTCH ASSY. (ONLY) WEIGHTS APPROX. 96lbs (43.5 kg)  
 3) CUSTOMER MUST RECALCULATE CG FOR ADDITION OF HYDRAULIC PUMP.

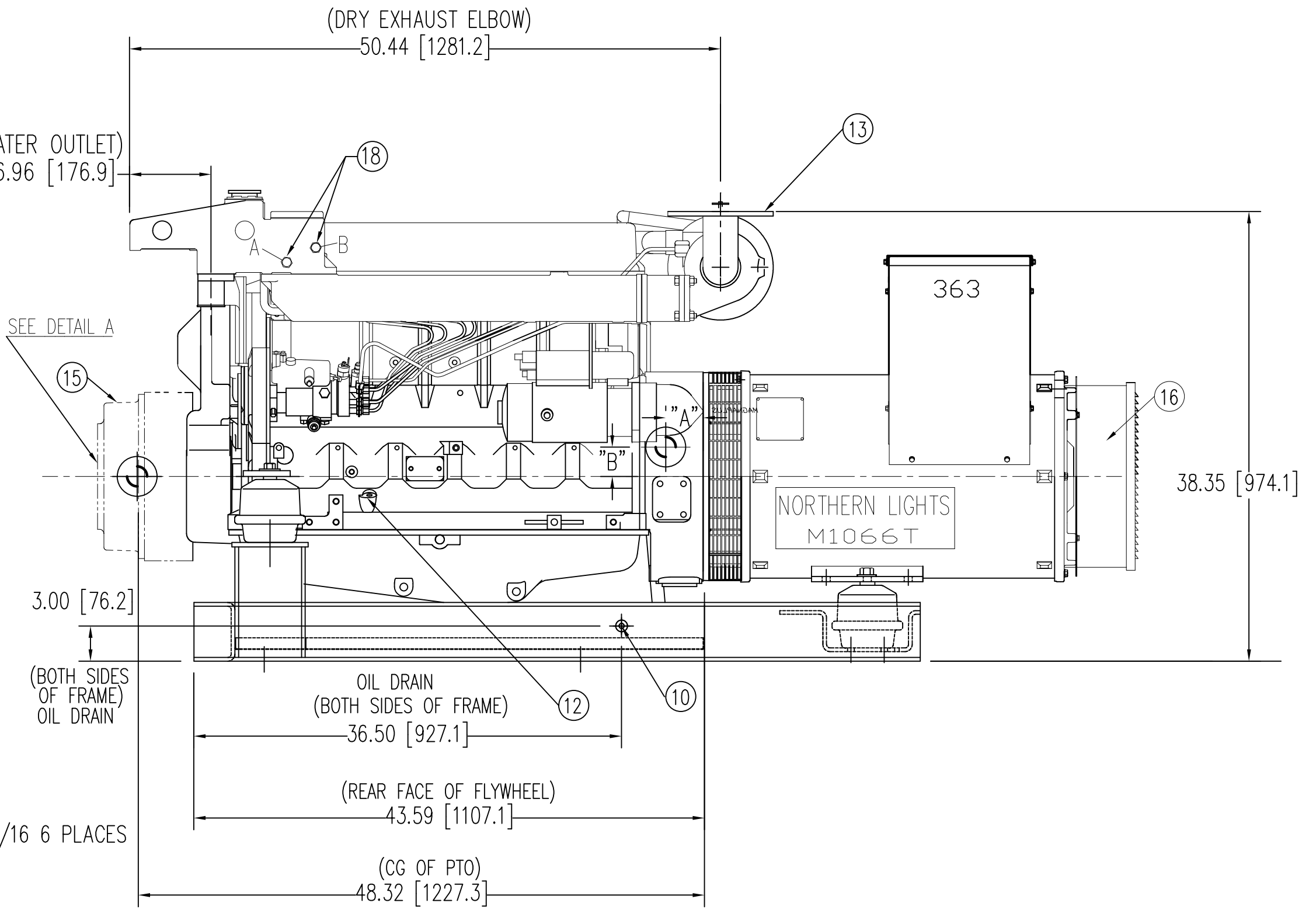
LEGEND		LEGEND	
ITEM	DESCRIPTION	ITEM	DESCRIPTION
1	EXPANSION TANK	11	HYDROLASTIC MOUNT
2	COOLANT FILL	12	ALTERNATE DIPSTICK LOCATION (OPTION)
3	ADAPTER, KEEL COOLER INLET Ø2.25 (Ø57.2)	13	DRY EXHAUST ELBOW 3" 150# STD. FLG
4	FUEL FILTER	14	CLOSED CRANKCASE VENTILATION SYSTEM
5	CRANKCASE OIL DIPSTICK	15	PTO/CLUTCH STD MTG FACE, SAE J744C, B OR C OR 2 OR 4 BOLT (OPTION)
6	CRANKCASE OIL FILLER	16	PMG COVER
7	CRANKCASE OIL FILTER	17	FUEL INLET / RETURN (3/8"NPT)
8	AIR INLET FILTER	18	CONNECTION FOR WATER HEATER B= HOT WATER OUT A= RETURN TO ENGINE.
9	ADAPTER, KEEL COOLER OUTLET Ø2.25 (Ø57.2)		
10	ENGINE OIL DRAIN 1/2" NPT		



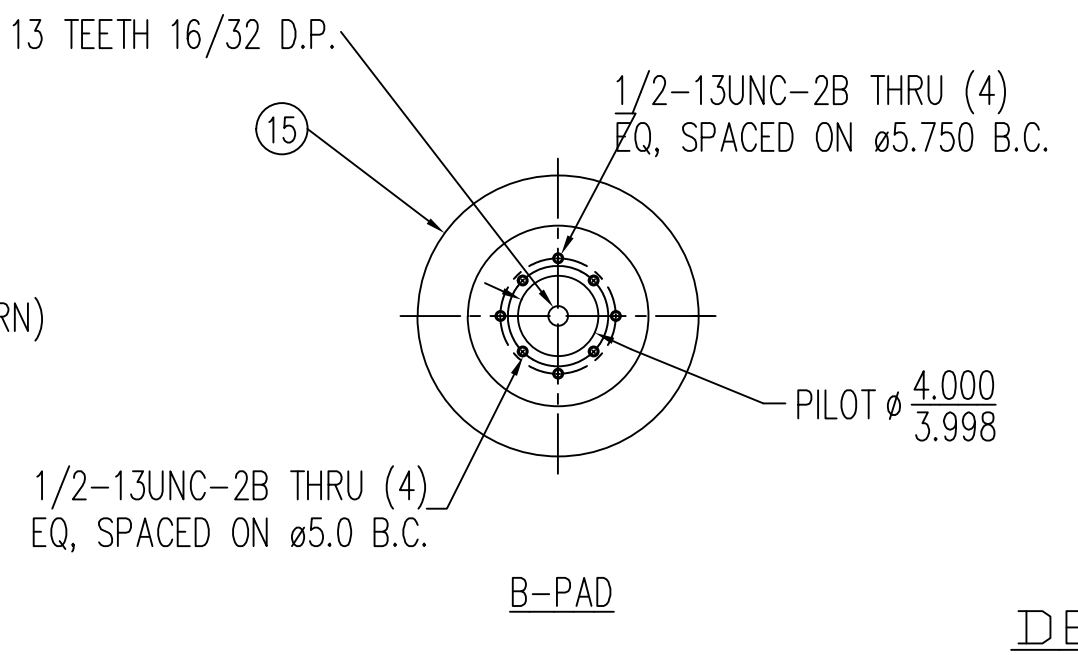
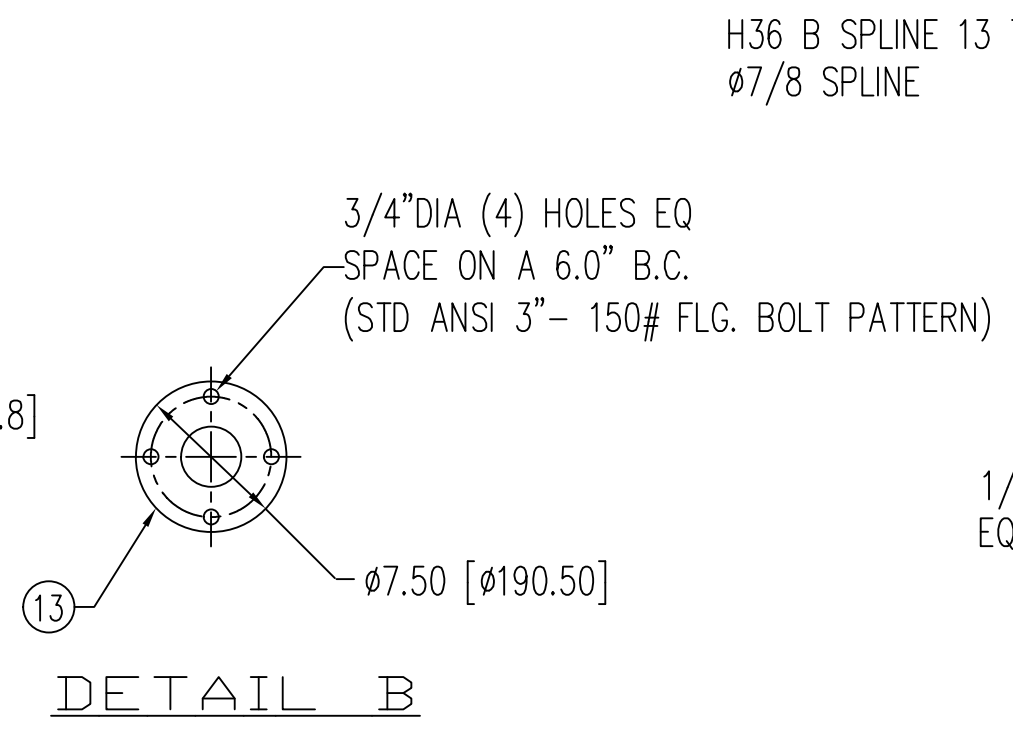
R.H. SIDE ELEVATION



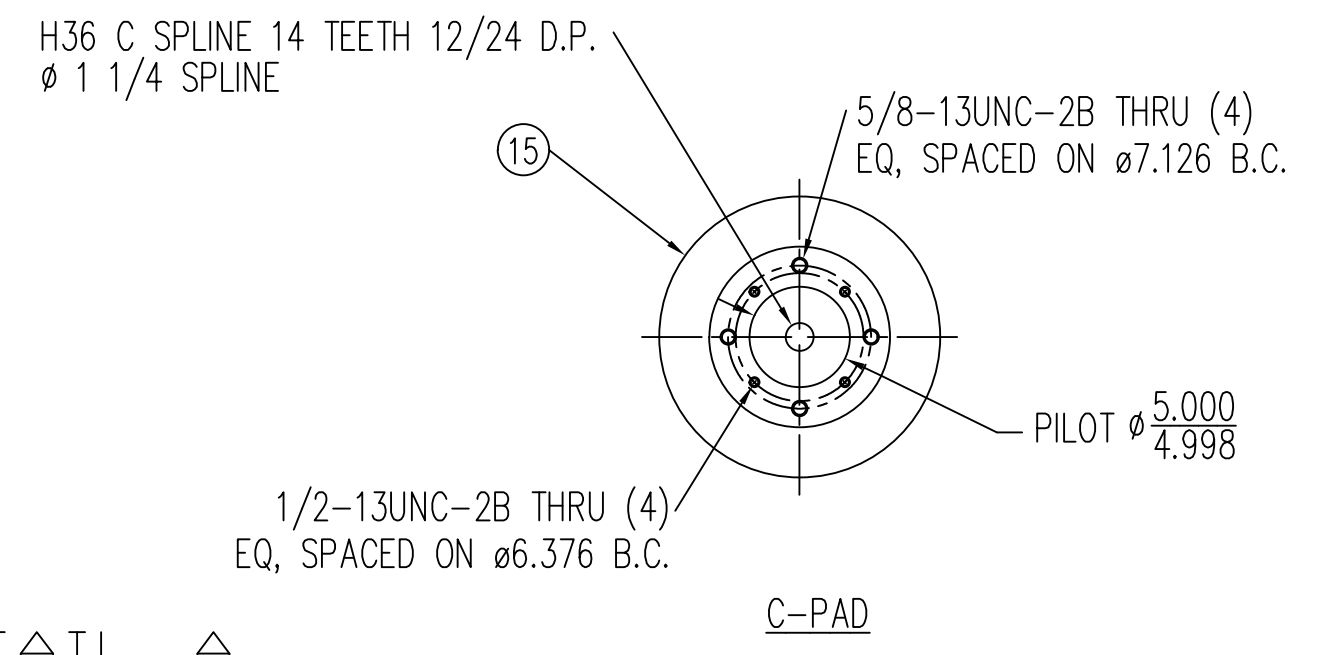
FRONT ELEVATION



L.H. SIDE ELEVATION

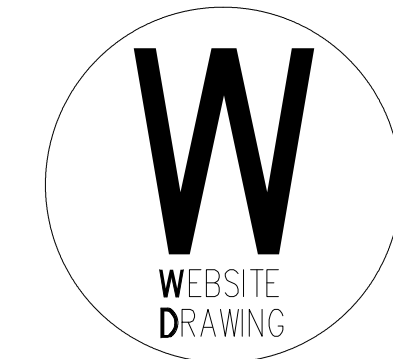


DETAIL A



C-PAD

THE DIMENSIONS ON THIS DRAWING ARE SUBJECT TO CHANGE PLEASE CONTACT ADE TO BE SURE YOU HAVE THE MOST CURRENT REVISION.



SYMBOL	DATE	DESCRIPTION	BY	CHECKED
DRAWN:	LTP	12/19/08		
CHECKED:				
APPROVED:				
RELEASED:				
SHEETS: 1 OF 1				
UNITS OF MEASURE: INCH [MM]				
REVISE ON CAD ONLY				

TITLE: NORTHERN LIGHTS  
 4420 14th AVE. N.W.  
 SEATTLE, WA 98107 (206) 789-3880  
 INSTALLATION DIMENSIONS  
 M1066/ 363PSL / 3φ / 60/50 Hz/ K.C./HYDROLASTIC MT.  
 P/N: SEE TABLE DWG. NO: D-4338 REV.: