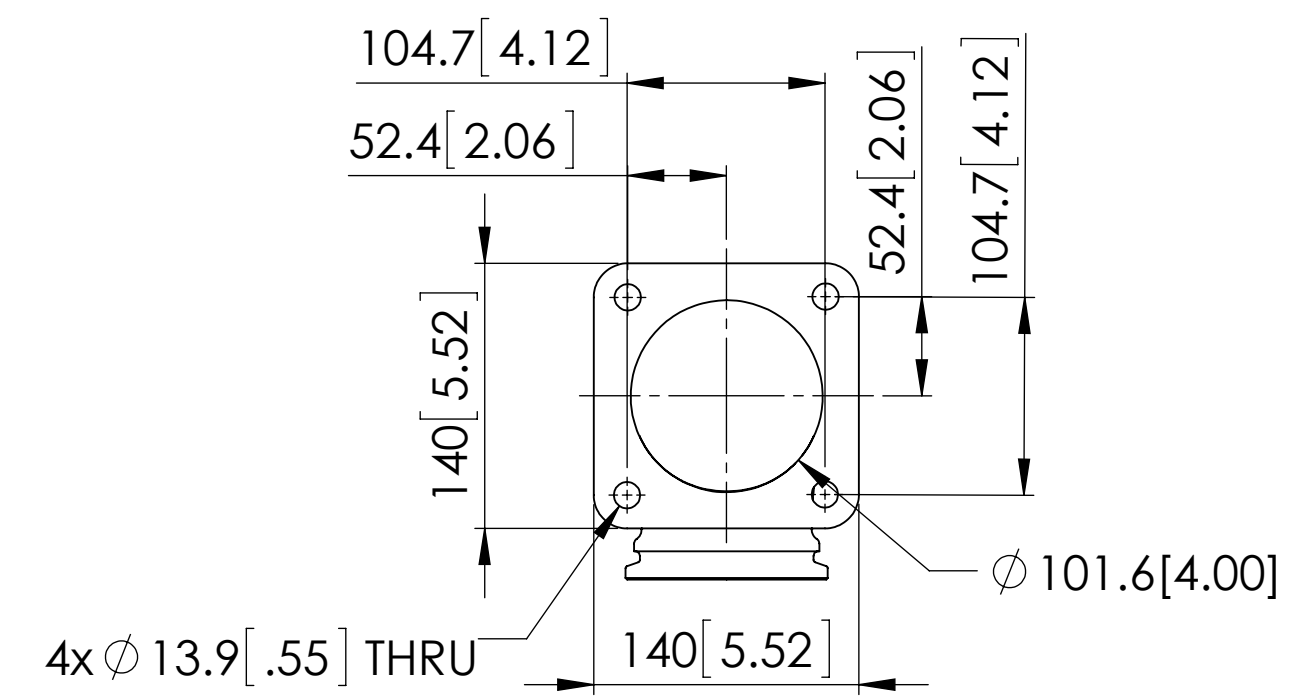
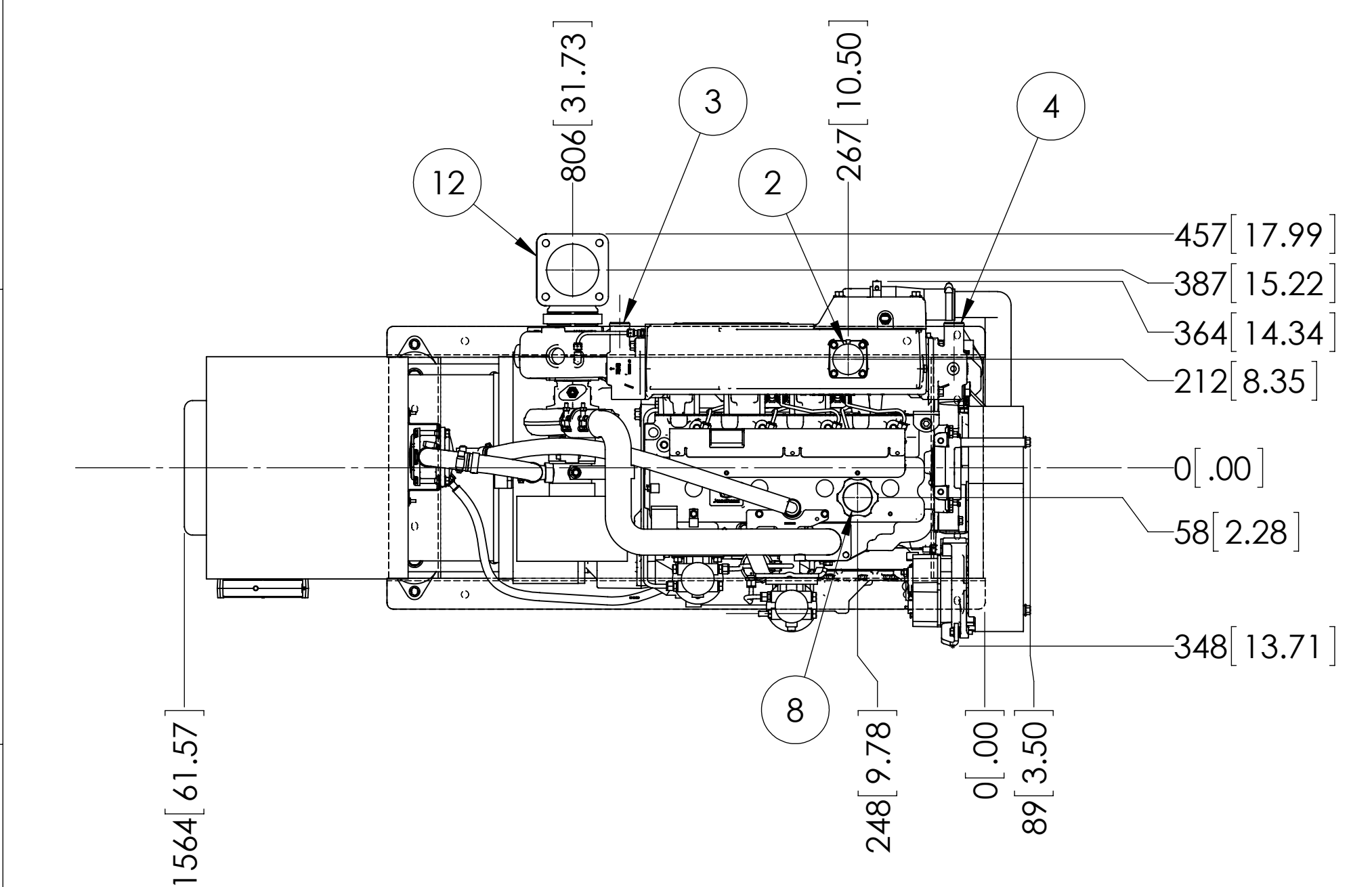


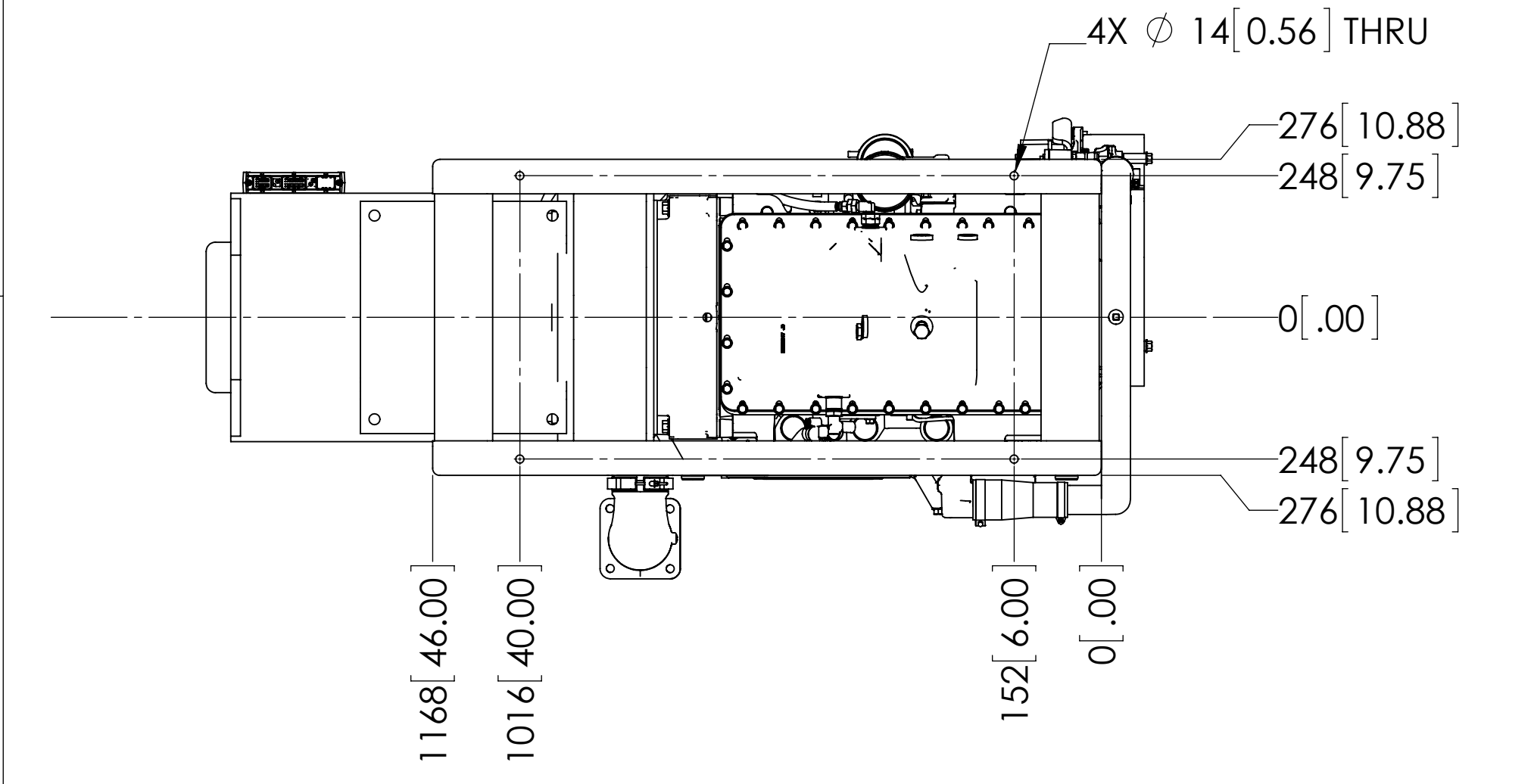
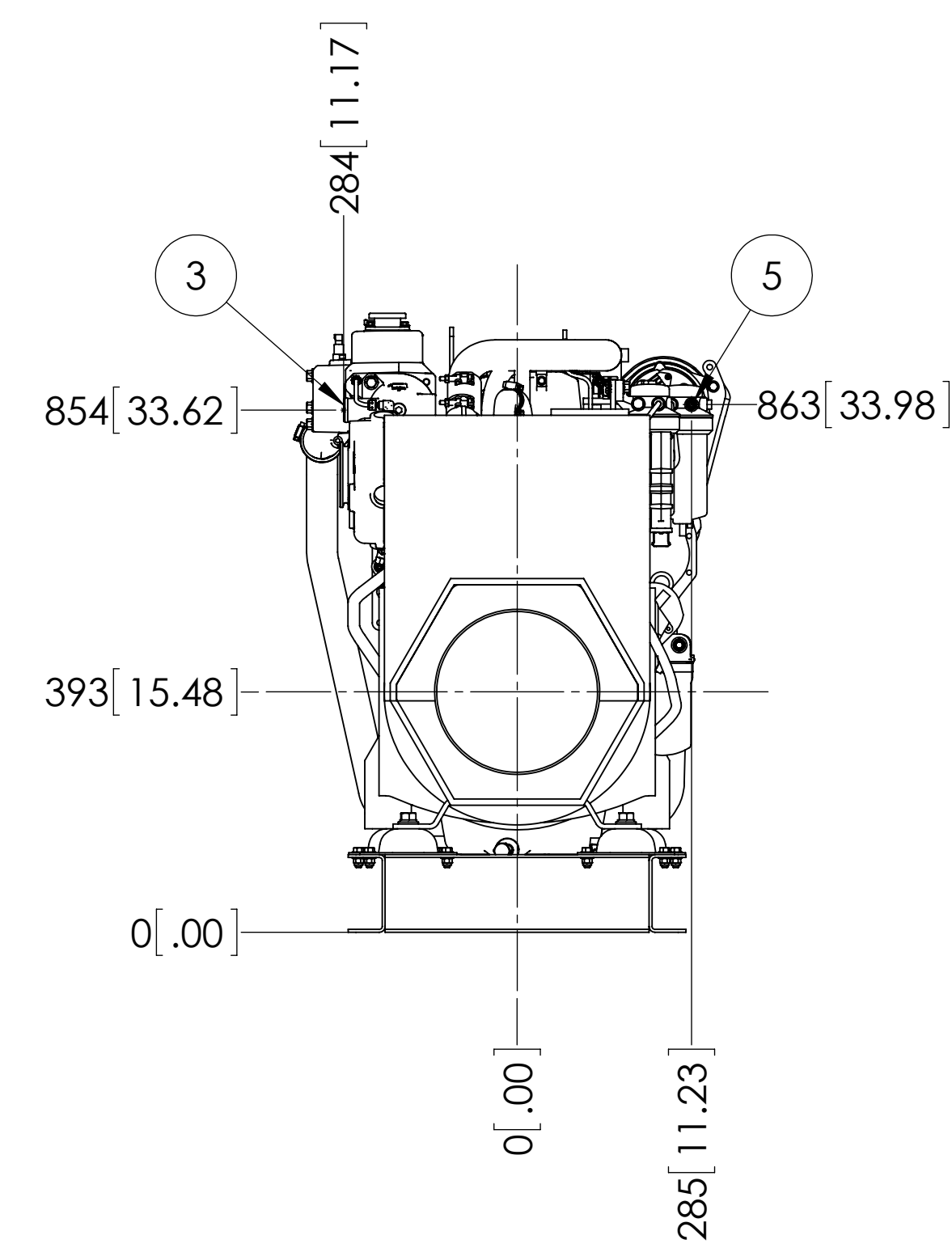
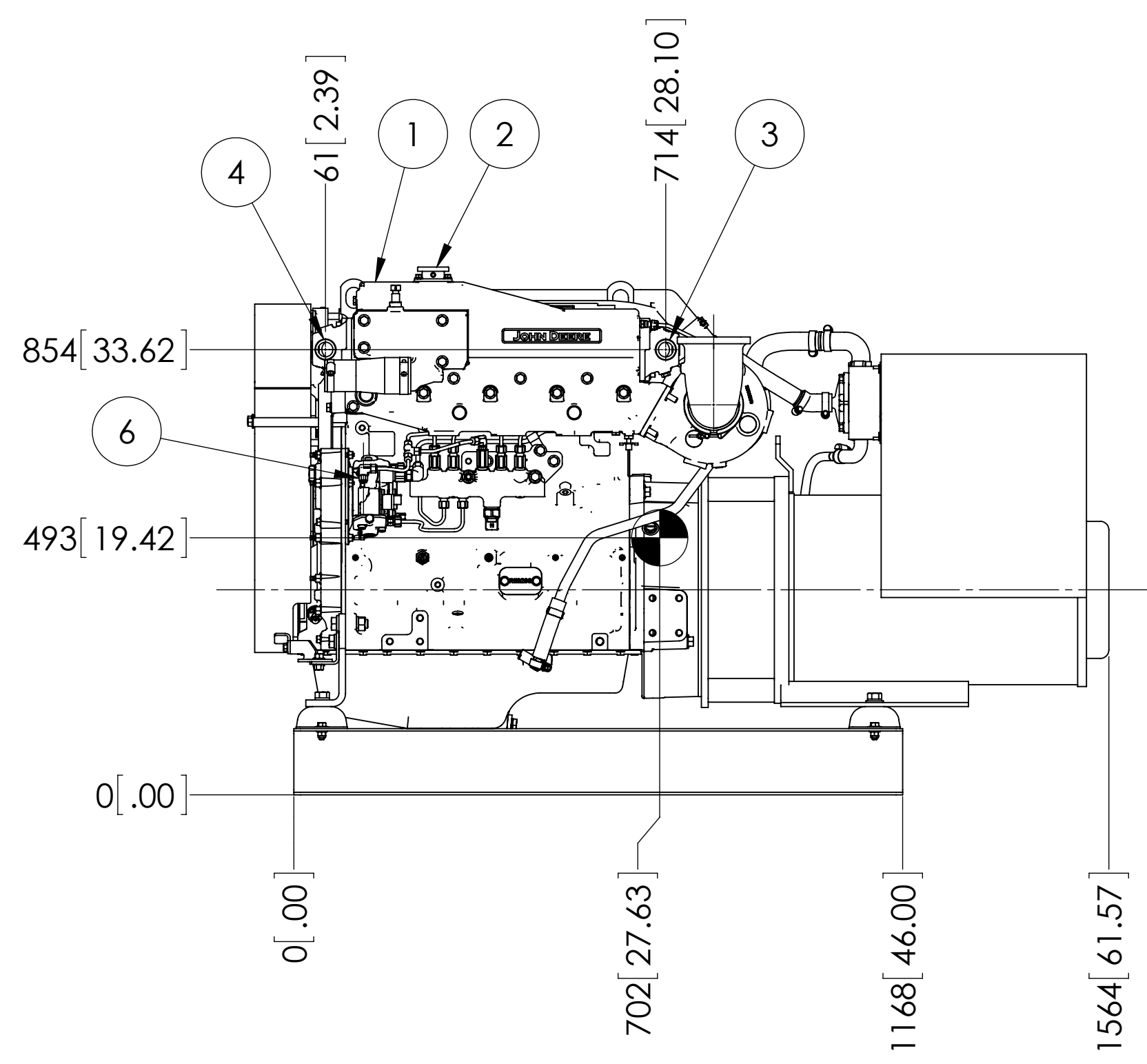
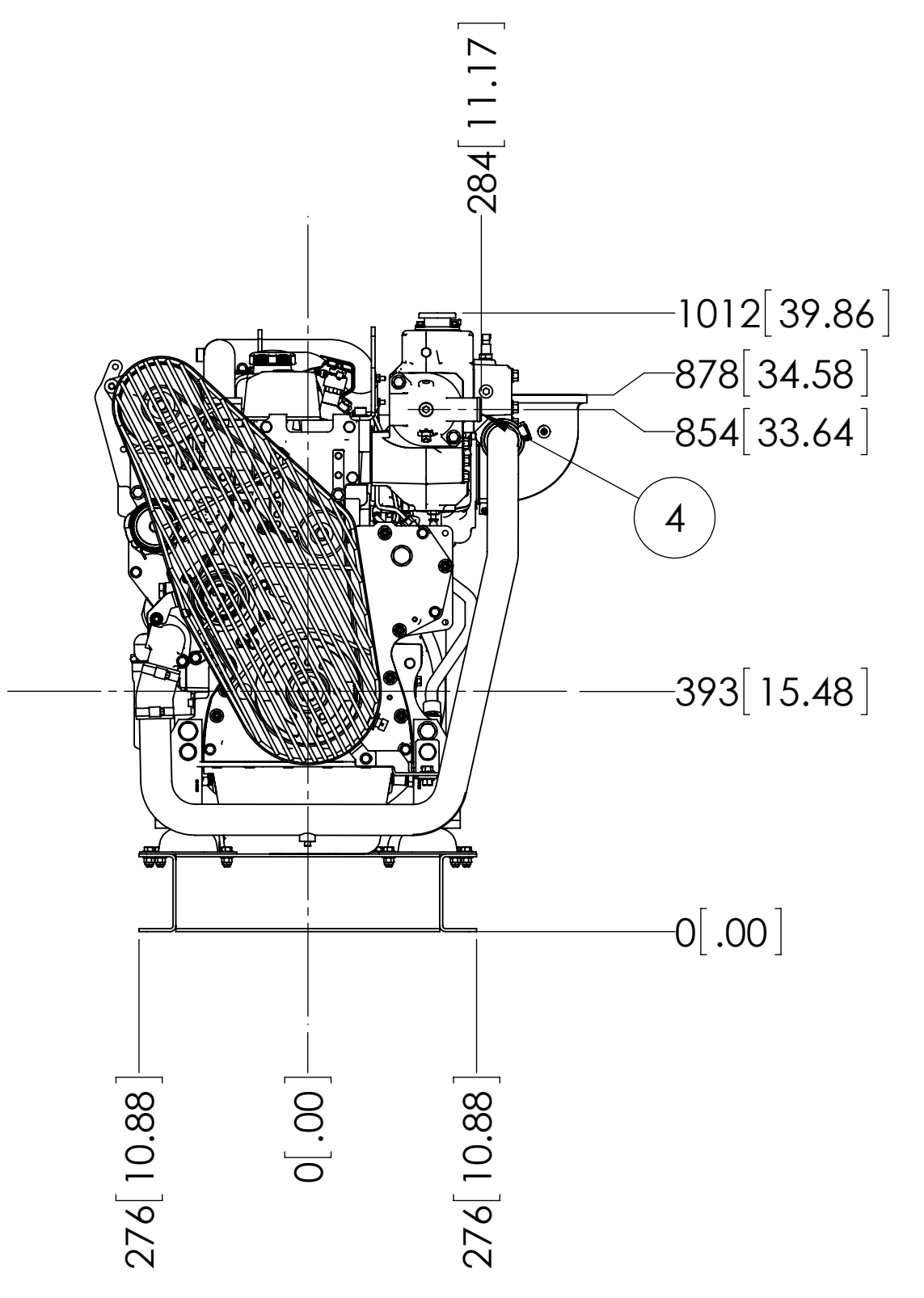
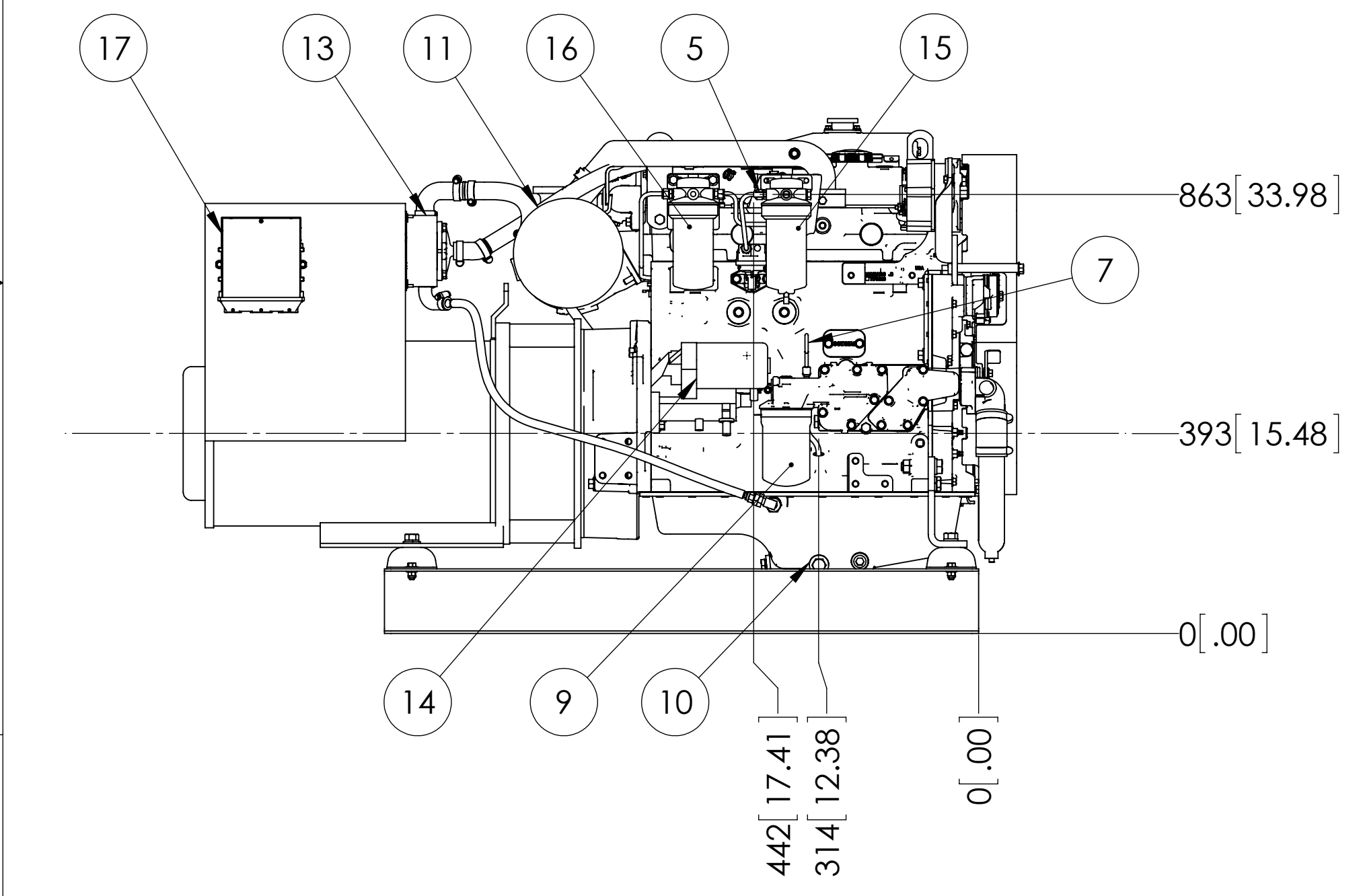
MODELS	APPROX. WT. lbs [kg]
M65C13.2S 65kW 1800 RPM 60Hz 3 ϕ	2055 [932]



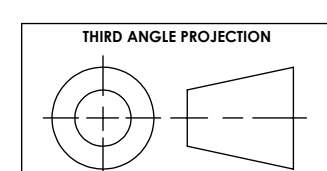
ITEM	DESCRIPTION
1	EXPANSION TANK
2	COOLANT FILL
3	COOLANT INLET ϕ 1.5 H.B.
4	COOLANT OUTLET ϕ 1.5 H.B.
5	FUEL SUPPLY ϕ 3/8 H.B.
6	FUEL RETURN ϕ 1/4 H.B.
7	CRANKCASE OIL DIPSTICK
8	CRANKCASE OIL FILLER
9	CRANKCASE OIL FILTER
10	ENGINE OIL DRAIN - M18x1.5
11	AIR INLET FILTER
12	DRY EXHAUST ELBOW - SEE DETAIL
13	CLOSED CRANKCASE VENTILATION SYSTEM
14	ELECTRIC STARTER
15	PRIMARY FUEL FILTER
16	FINAL FUEL FILTER
17	ENGINE CONTROL UNIT



DRY EXHAUST ELBOW FLANGE DETAIL



THE DIMENSIONS ON THIS DRAWING ARE SUBJECT TO CHANGE. PLEASE CONTACT NLI TO BE SURE YOU HAVE THE MOST CURRENT REVISION.



PROPRIETARY AND CONFIDENTIAL
 THE INFORMATION CONTAINED IN THIS DRAWING IS THE SOLE PROPERTY OF NORTHERN LIGHTS. ANY REPRODUCTION IN PART OR AS A WHOLE WITHOUT THE WRITTEN PERMISSION OF NORTHERN LIGHTS IS PROHIBITED.

UNLESS OTHERWISE SPECIFIED:		NAME	DATE
DIMENSIONS ARE IN MILLIMETERS		MG	08/06/13
TOLERANCES:		TAH	08/30/13
ANGULAR:		ENG APPR.	
MACH: 0.1° BEND \pm 1.0°		MFG APPR.	
X. \pm 3		Q.A.	
X.X \pm 2		COMMENTS:	
INTERPRET GEOMETRIC TOLERANCING PER: ASME Y14.5M			
MATERIAL:			
FINISH:			
DO NOT SCALE			

NORTHERN LIGHTS
 4420 14th AVE. N.W.
 Seattle, WA 98107
 (206) 789-3880
 www.northern-lights.com

TITLE: **INSTALLATION DIMENSIONS**
M65C13

SIZE: **D** PART NO. DWG. NO. **D-4698** REV **A**
 SCALE: 1:10 WEIGHT: SHEET 1 OF 1

REV.	DESCRIPTION	DATE	BY	CHECKED
A	CORRECTED WEIGHT: 2055 LBS WAS 2072 LBS. ECN 2890	10/20/2014	MG	LTP