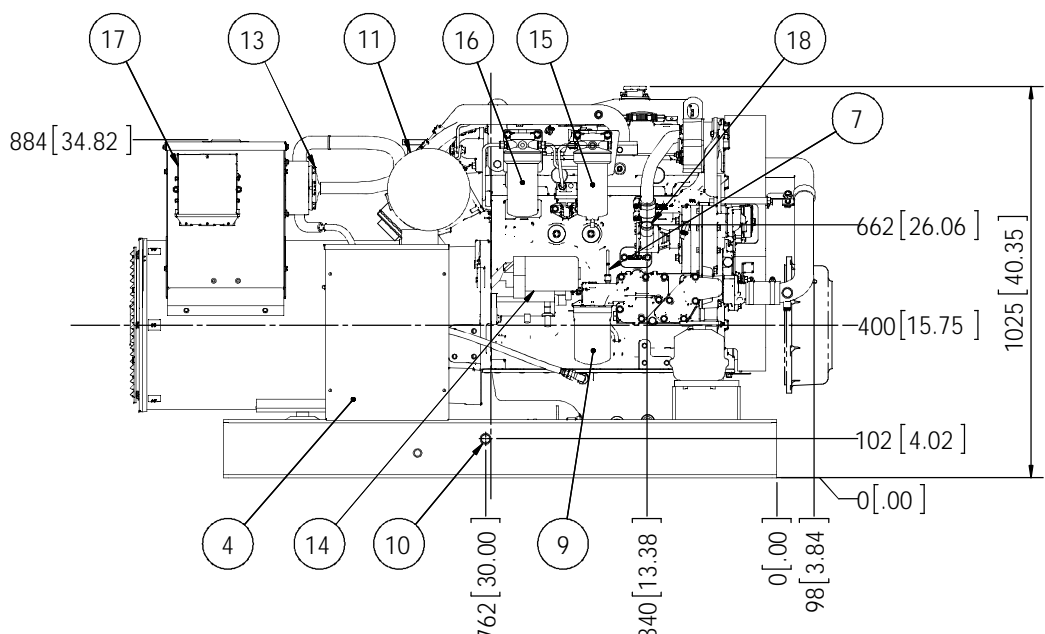
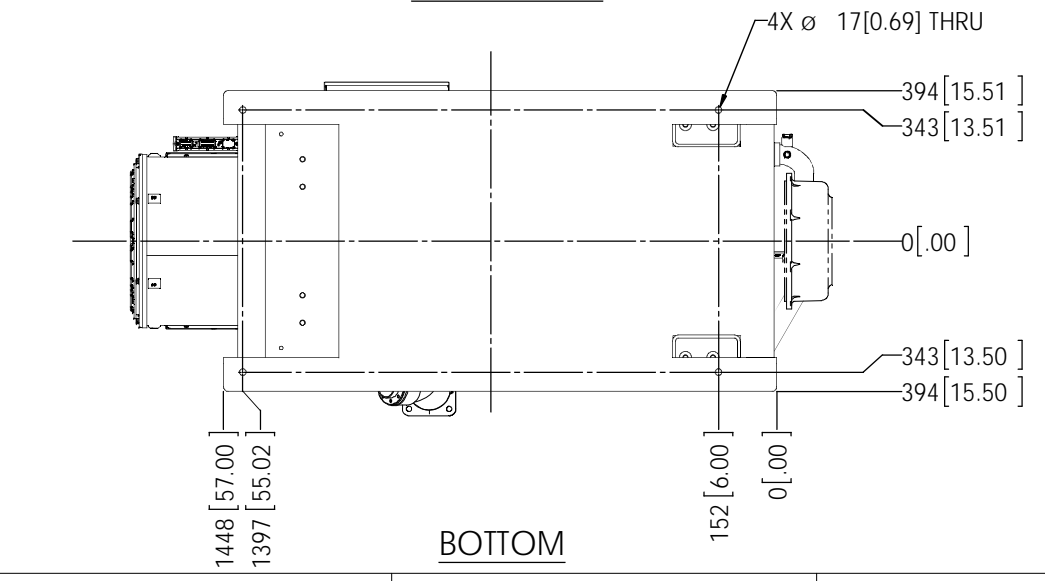


PLAN



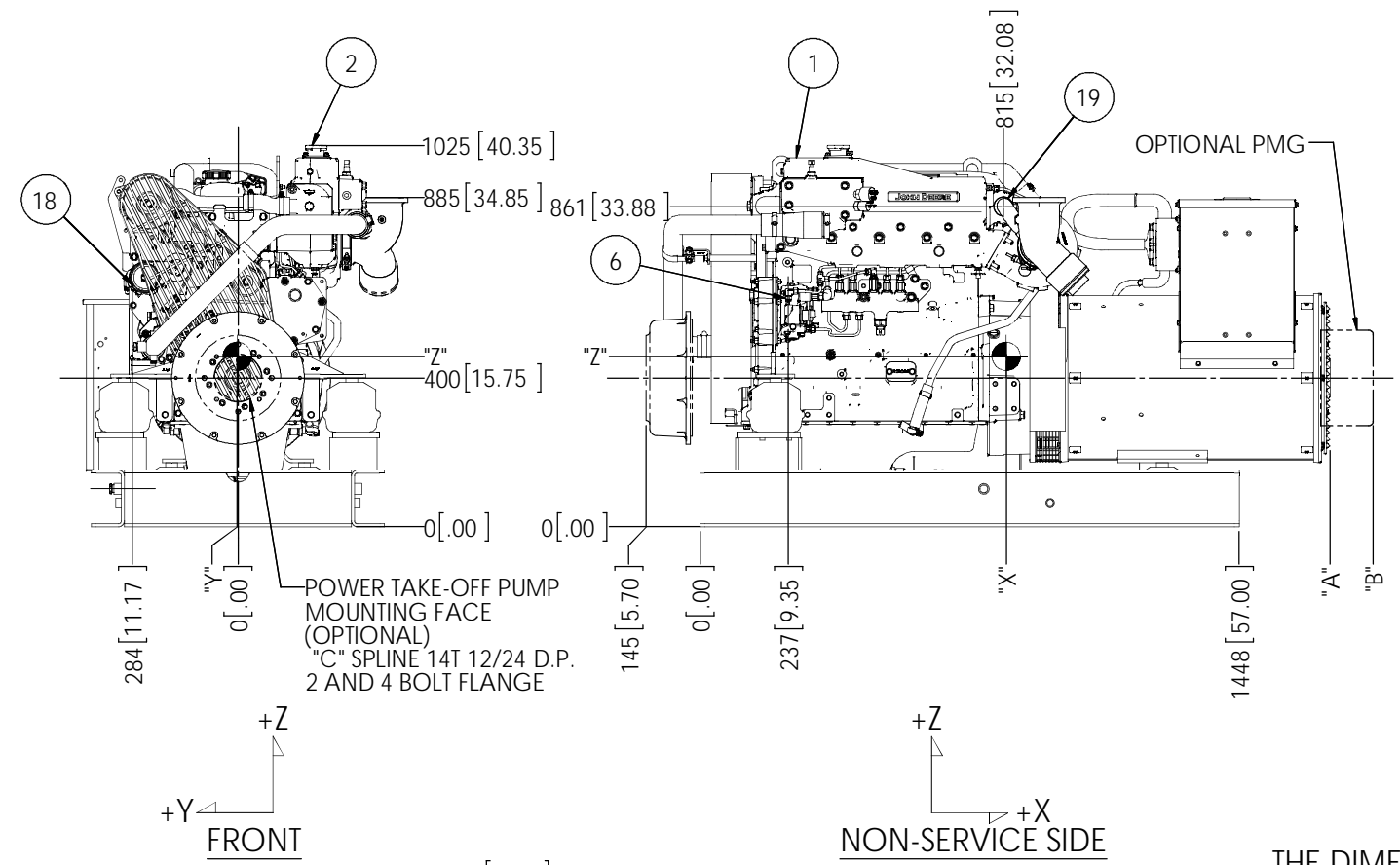
SERVICE SIDE



BOTTOM

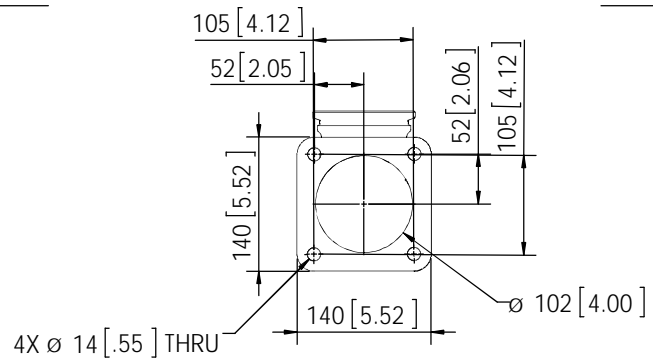
MODELS	EST. WEIGHT*	C.G.			W/O PMG	W/PMG
		"X"	"Y"	"Z"	"A"	"B"
M65T13.11 65kW 1800RPM 60Hz 3 \emptyset	2215 LBS [1005 kg]	783[30.83]	-2[.08]	461[18.15]	1612[63.46]	1729[68.07]
M65T13.31 65kW 1800RPM 60Hz 1 \emptyset	2360 LBS [1070 kg]	822[32.36]	-2[.08]	458[18.03]	1692[66.6]	1808[71.19]
OPTIONAL PTO	154 LBS [70kg]	-23[.90]	0	399[15.71]		

*WITH OIL, NO COOLANT



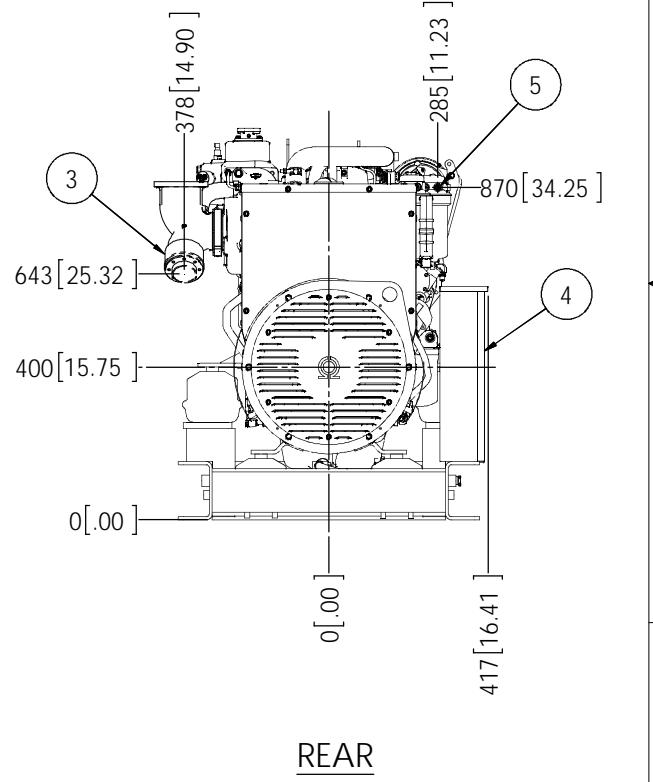
FRONT

NON-SERVICE SIDE



OPTIONAL DRY EXHAUST ELBOW FLANGE DETAIL

ITEM	DESCRIPTION
1	EXPANSION TANK
2	COOLANT FILL
3	OPTIONAL WET EXHAUST \emptyset 4 H.B.
4	D.C. JUNCTION BOX
5	FUEL SUPPLY - \emptyset 3/8 H.B.
6	FUEL RETURN - \emptyset 1/4 H.B.
7	CRANKCASE OIL DIPSTICK
8	CRANKCASE OIL FILLER
9	CRANKCASE OIL FILTER
10	ENGINE OIL DRAIN - 1/2 NPT
11	AIR INLET FILTER
12	OPTIONAL DRY EXHAUST ELBOW - SEE DETAIL
13	CLOSED CRANKCASE VENTILATION SYSTEM
14	ELECTRIC STARTER
15	PRIMARY FUEL FILTER
16	FINAL FUEL FILTER
17	ENGINE CONTROL UNIT
18	SEA WATER INLET - \emptyset 1-1/4 H.B.
19	SEAWATER OUTLET - \emptyset 1-1/2 H.B. (DRY EXHAUST)



REAR

THE DIMENSIONS ON THIS DRAWING ARE SUBJECT TO CHANGE. PLEASE CONTACT NLI TO BE SURE YOU HAVE THE MOST CURRENT REVISION.

	UNLESS OTHERWISE SPECIFIED:		NAME	DATE		4420 14th AVE. N.W. Seattle, WA 98107 (206) 789-3880 www.northern-lights.com
	DIMENSIONS ARE IN MILLIMETERS		MG	07/02/14		
PROPRIETARY AND CONFIDENTIAL THE INFORMATION CONTAINED IN THIS DRAWING IS THE SOLE PROPERTY OF NORTHERN LIGHTS. ANY REPRODUCTION IN PART OR AS A WHOLE WITHOUT THE WRITTEN PERMISSION OF NORTHERN LIGHTS IS PROHIBITED.	TOLERANCES:		CHECKED	TAH	09/03/14	TITLE: INSTALLATION DIMENSIONS M65T13
	ANGULAR: MACH ± 0.5° BEND ± 10°		ENG APPR.			
X = 0.2		INTERPRET GEOMETRIC TOLERANCING PER ASME Y14.5M	MFG APPR.			SIZE: D PART NO: SEE TABLE DWG. NO: D-4764 REV:
X.X = 0.13		MATERIAL:	COMMENTS:			
FINISH:		SCALE: 1:10	WEIGHT:	SHEET 1 OF 1		