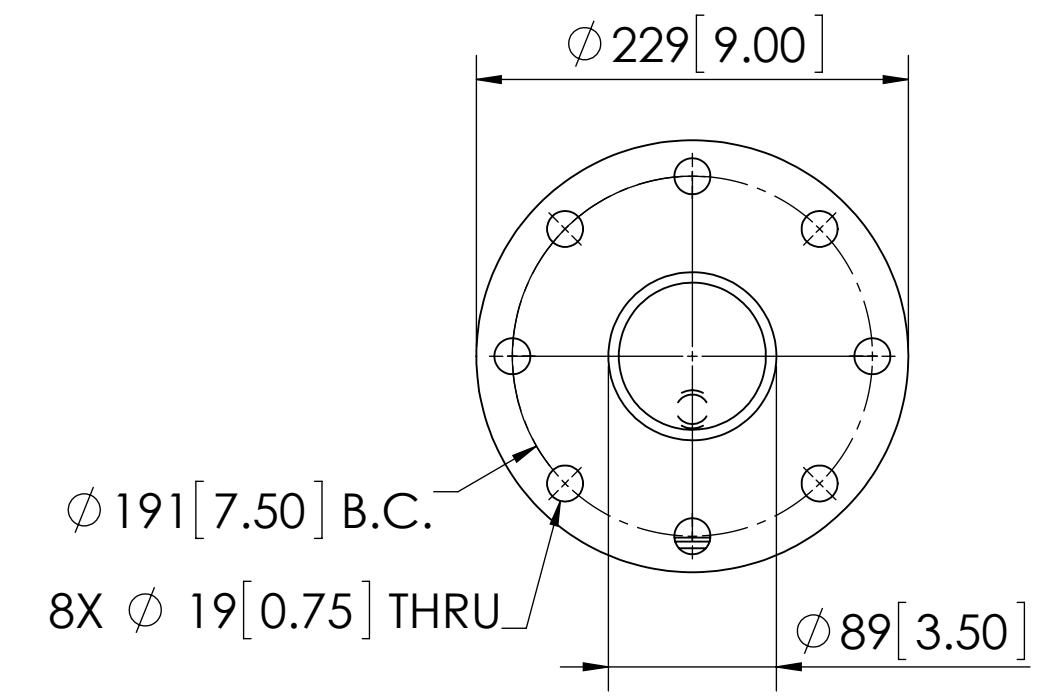
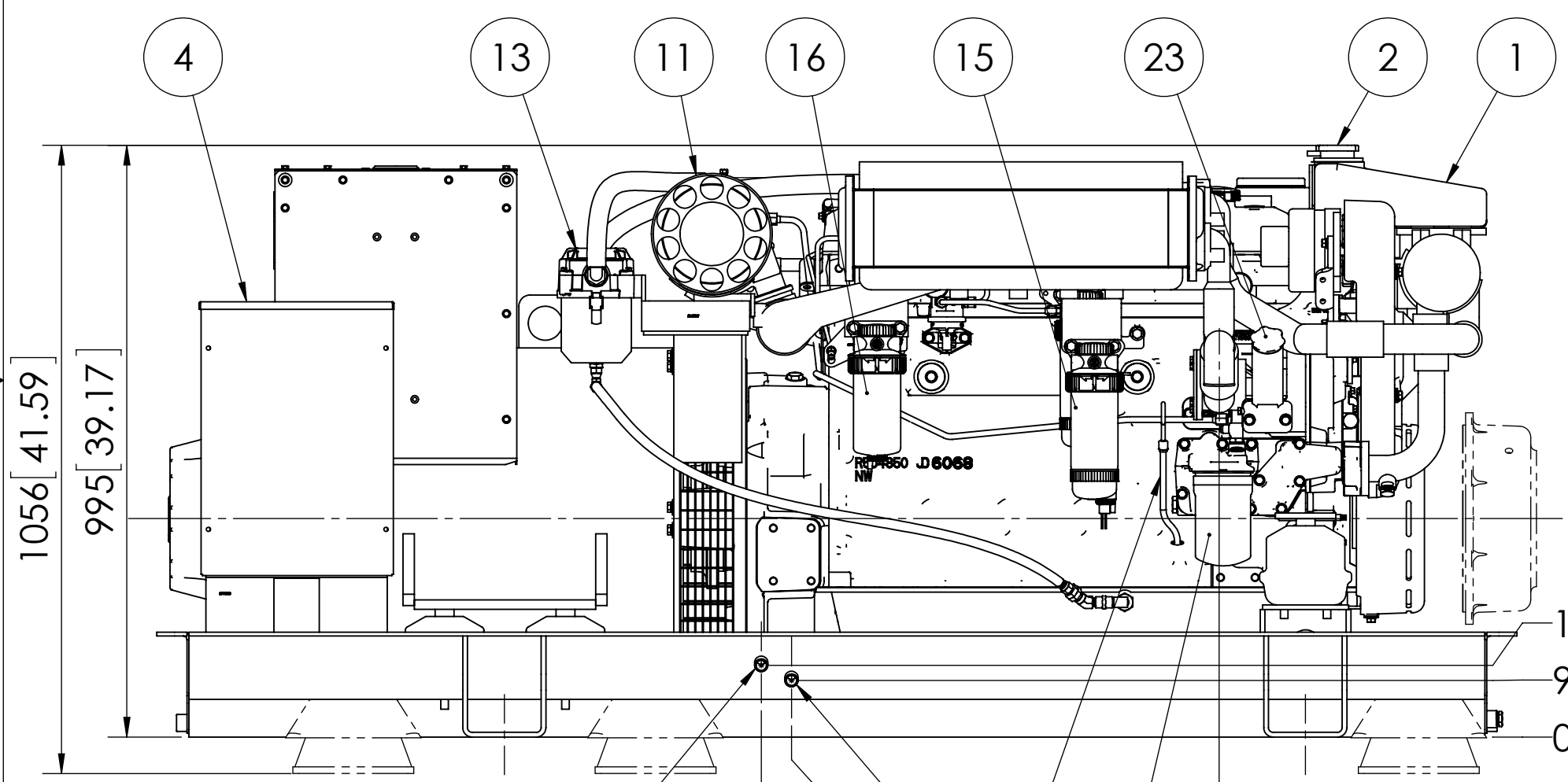


PLAN

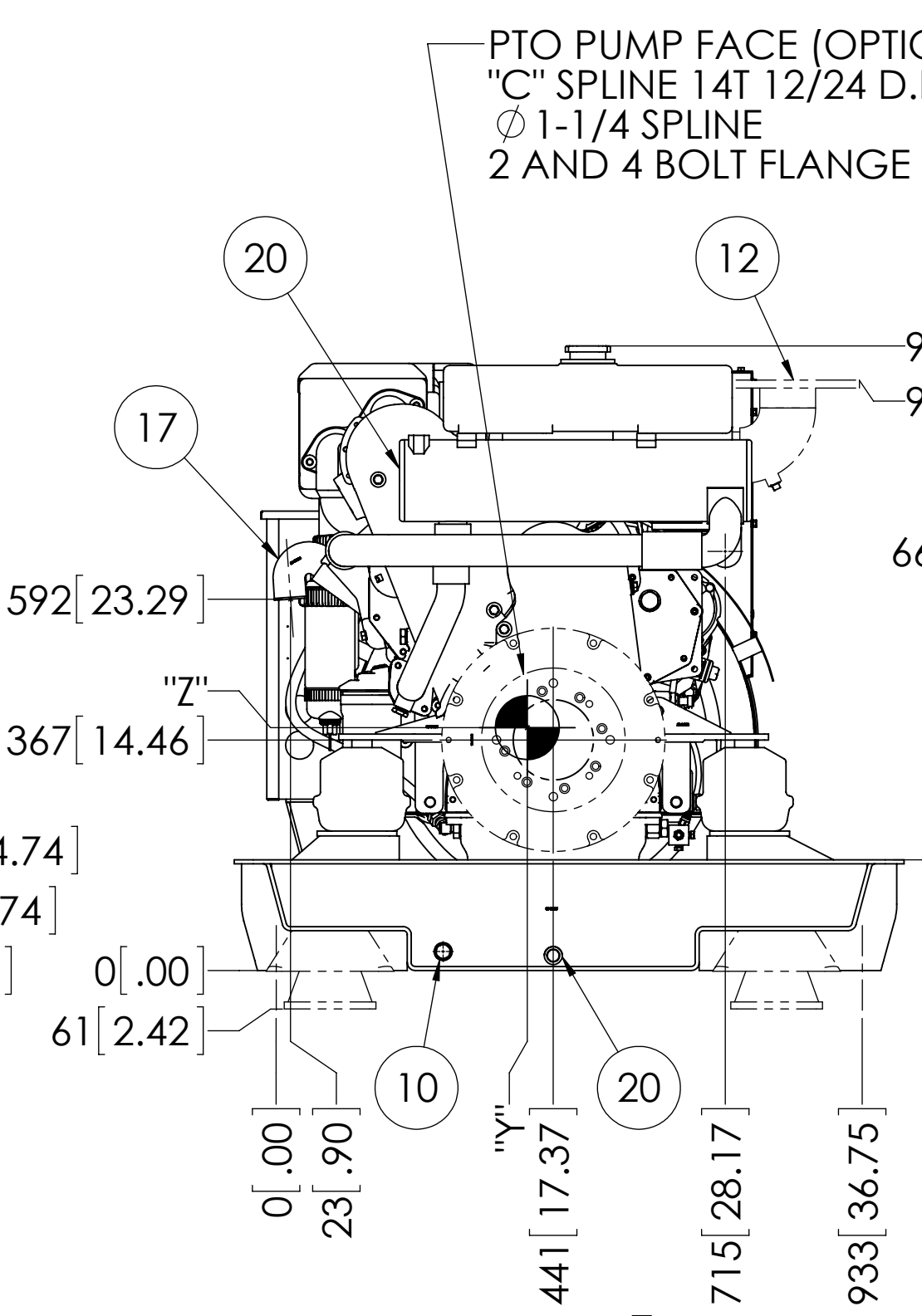


DRY EXHAUST ELBOW DETAIL
SCALE: 1:4

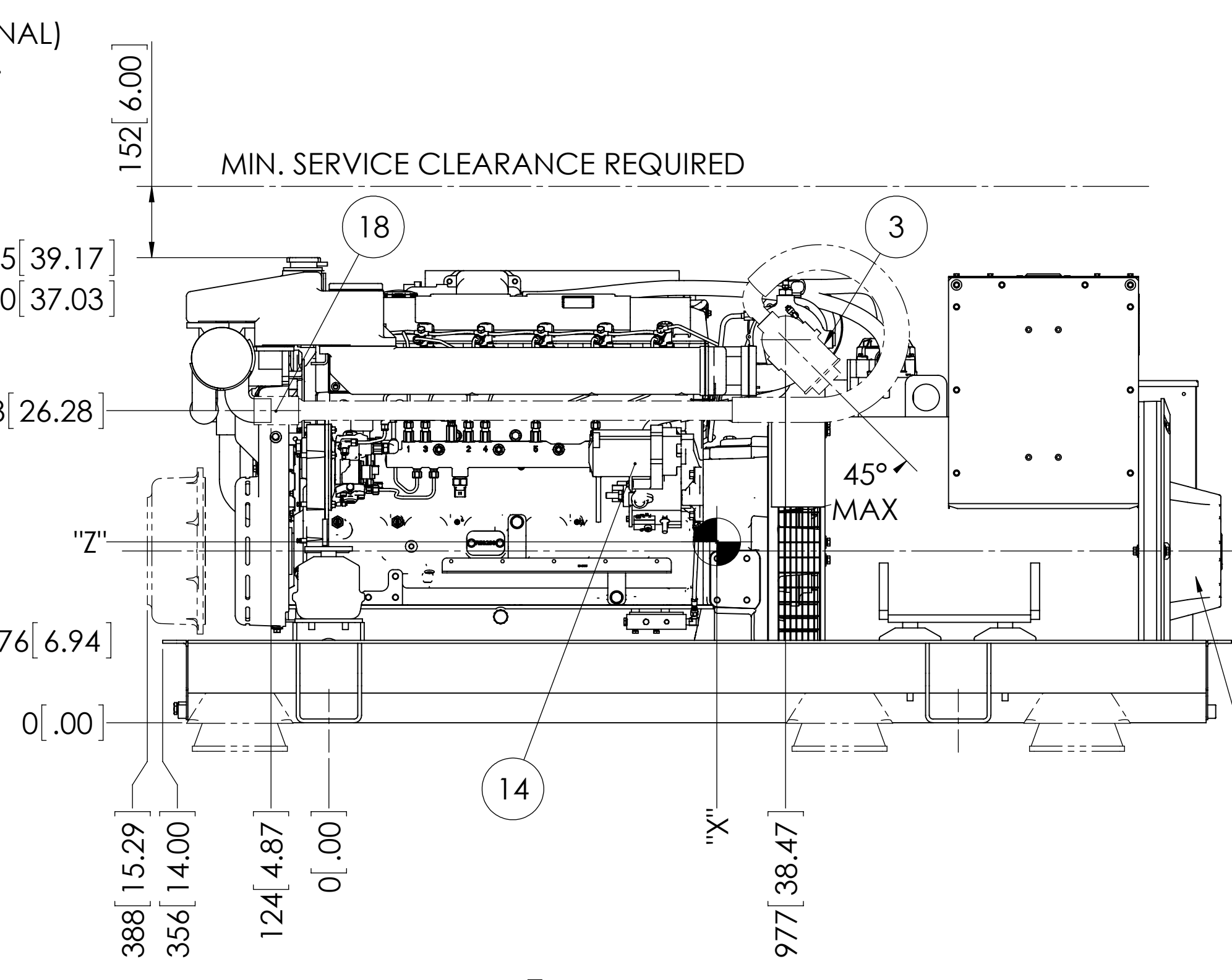
ITEM	DESCRIPTION	ITEM	DESCRIPTION
1	EXPANSION TANK	13	CLOSED CRANKCASE VENTILATION SYSTEM
2	COOLANT FILL	14	ELECTRIC STARTER
3	OPTIONAL WET EXHAUST ϕ 4" H.B.	15	PRIMARY FUEL FILTER
4	D.C. JUNCTION BOX	16	FINAL FUEL FILTER
5	FUEL SUPPLY - 3/8" NPT	17	RAW WATER INLET - ϕ 2" H.B.
6	FUEL RETURN - 3/8" NPT	18	RAW WATER OUTLET ϕ 2"
7	CRANKCASE OIL DIPSTICK	19	HEAT EXCHANGER
8	CRANKCASE OIL FILLER	20	BASE PAN DRAIN - 1/2" NPT
9	CRANKCASE OIL FILTER	21	OPTIONAL COMPOUND MOUNT
10	ENGINE OIL DRAIN - 1/2" NPT	22	PMG
11	AIR INLET FILTER	23	CRANKCASE OIL FILL - R.H. SIDE
12	OPTIONAL DRY EXHAUST ELBOW - SEE DETAIL	24	



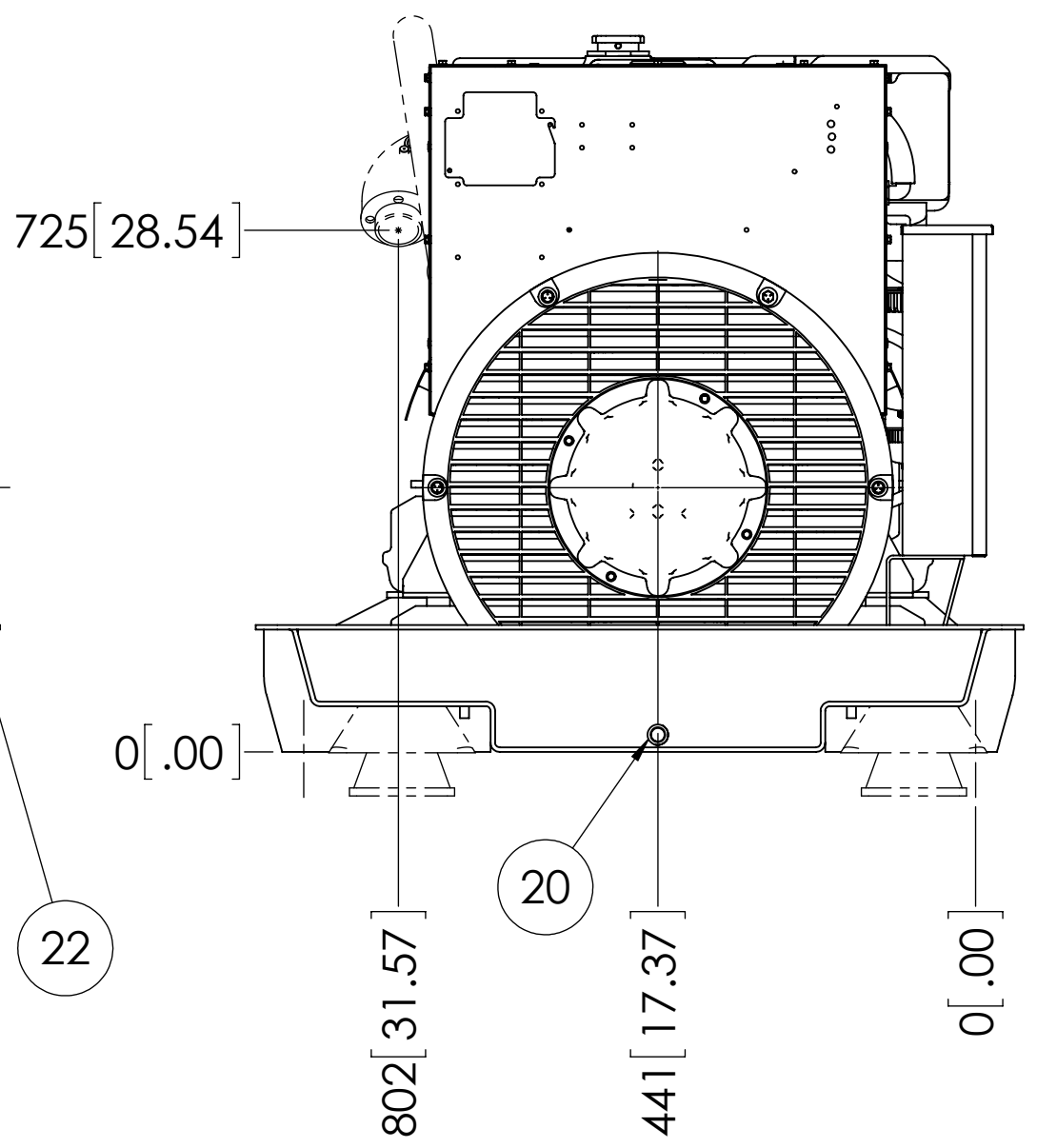
SERVICE SIDE



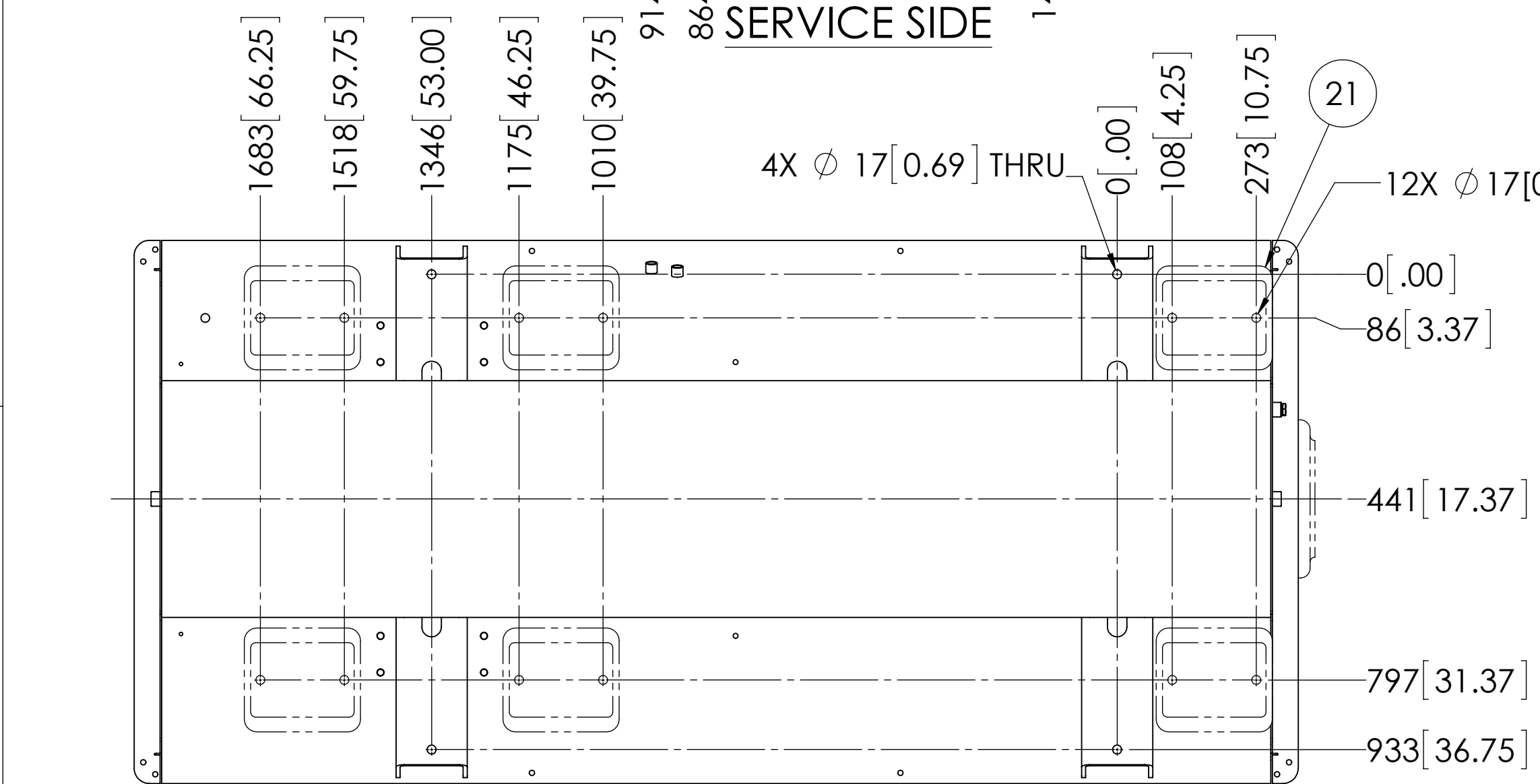
FRONT



NON-SERVICE SIDE

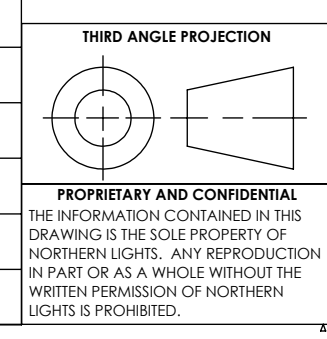


REAR



BOTTOM

ITEM	EST. WEIGHT kg[LBS]	C.G.		
		"X"	"Y"	"Z"
M1066A13.11L	1452* [3200]	830[32.7]	-440[17.3]	387[15.2]
PTO	73[161]	-257[10.1]	-441[17.4]	366[14.4]
COMPOUND MOUNTS	48[105]	834[32.8]	-441[17.4]	2[.08]
*DRY WEIGHT				



UNLESS OTHERWISE SPECIFIED: DIMENSIONS ARE IN MILLIMETERS TOLERANCES: ANGULAR: MACH \pm 0.5° BEND \pm 1.0° X, \pm 1 X.X, \pm 0.5	NAME: MG DATE: 07/18/14
INTERPRET GEOMETRIC TOLERANCING PER: ASME Y14.5M	CHECKED: TAH DATE: 07/31/14
MATERIAL: FINISH: DO NOT SCALE	ENG APPR: MEG APPR: G.A.

NORTHERN LIGHTS
4420 14th AVE. N.W.
Seattle, WA 98107
(206) 789-3880
www.northern-lights.com

TITLE: INSTALLATION DIMENSIONS
M1066A13.11L - 120kW@1800RPM 3 ϕ

SIZE: D PART NO. DWG. NO. D-4771 REV SHEET 1 OF 1

THE DIMENSIONS ON THIS DRAWING ARE SUBJECT TO CHANGE. PLEASE CONTACT NLI TO BE SURE YOU HAVE THE MOST CURRENT REVISION.