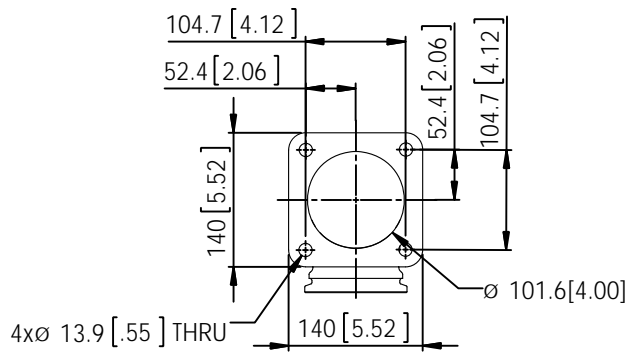
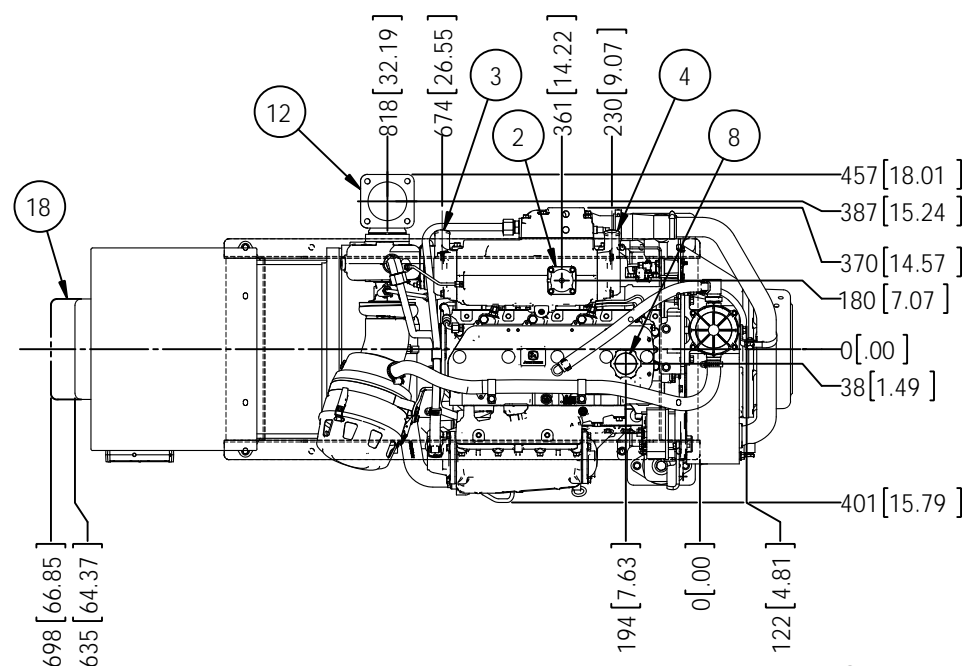
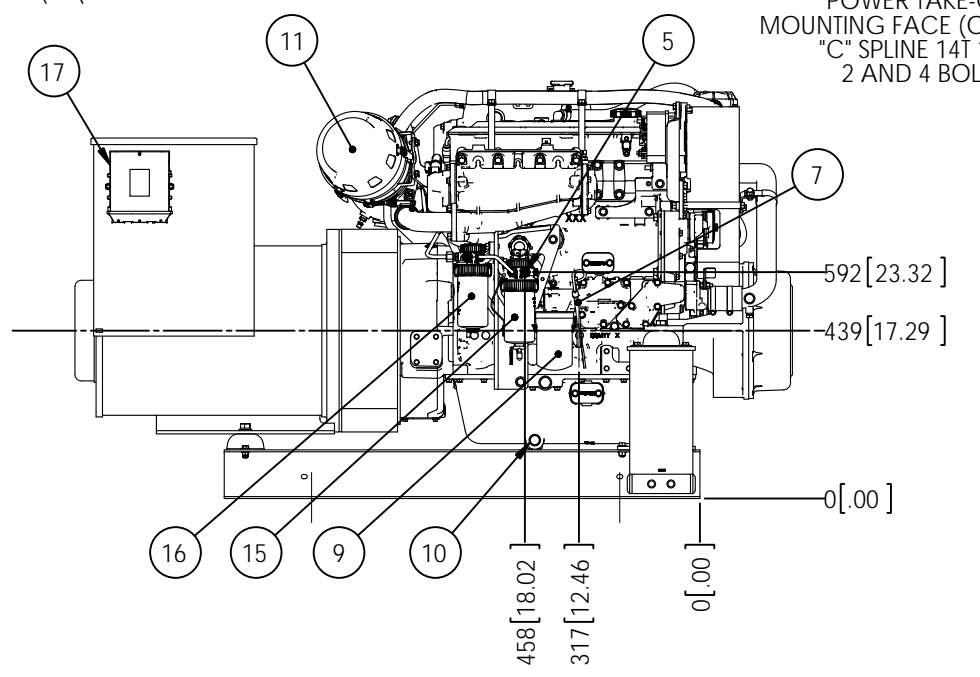


MODELS	APPROX. WT. lbs [kg]
M99C13.2S 99kW 1800 RPM 60Hz 3 ϕ	2760 [1252]

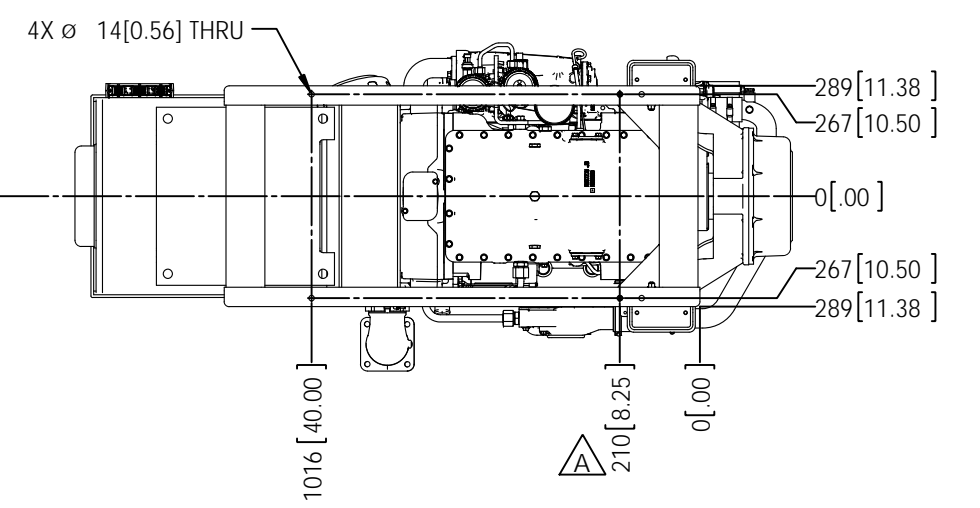
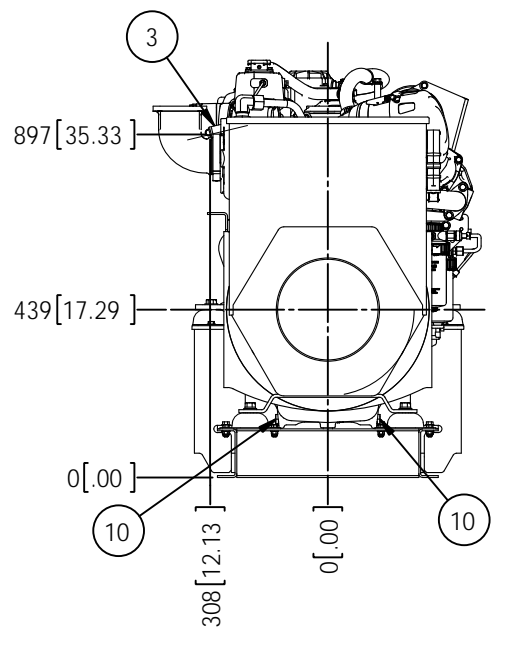
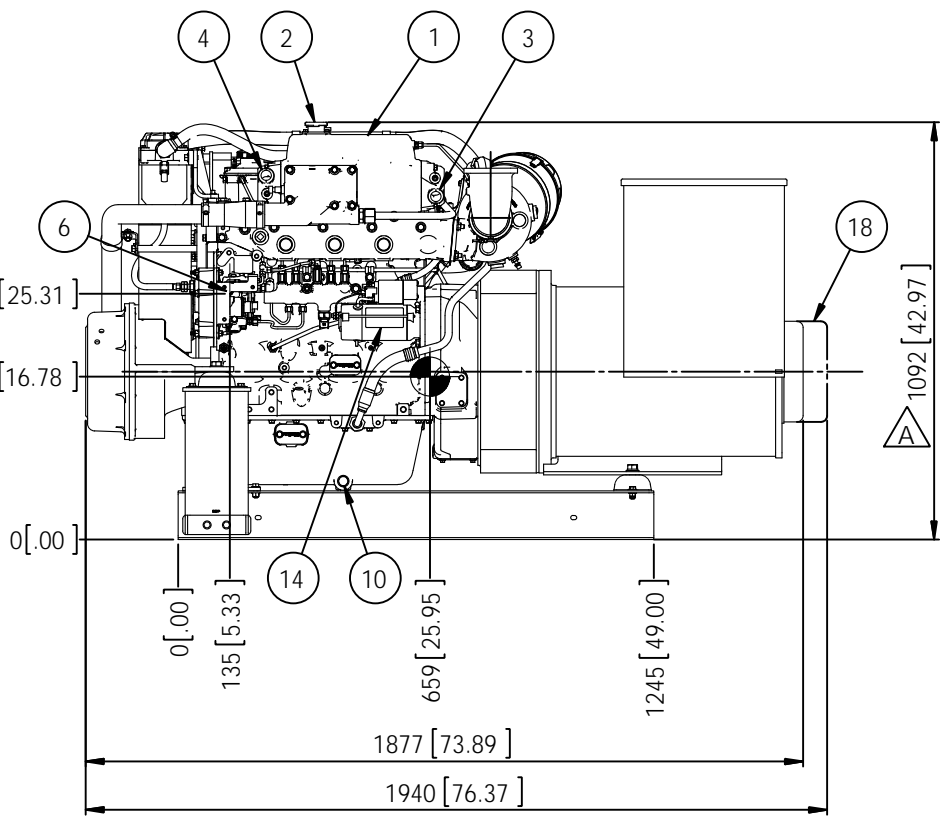
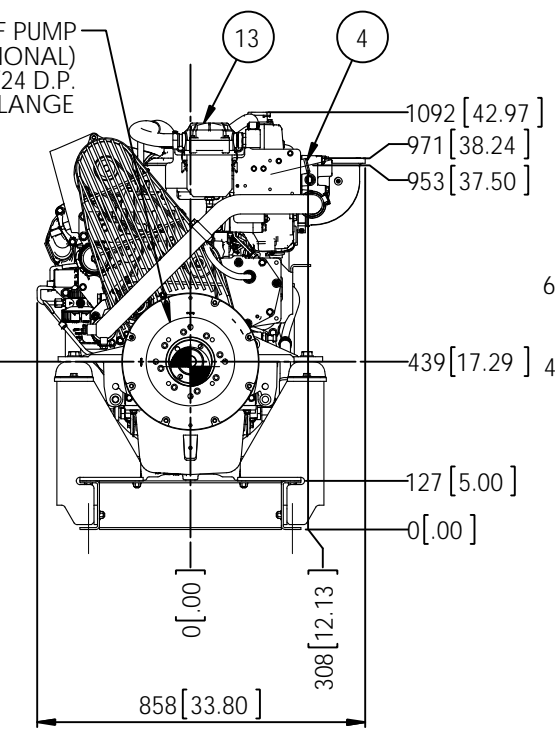
ITEM	DESCRIPTION
1	EXPANSION TANK
2	COOLANT FILL
3	COOLANT INLET ϕ 1.5 H.B.
4	COOLANT OUTLET ϕ 1.5 H.B.
5	FUEL SUPPLY ϕ 3/8 H.B.
6	FUEL RETURN ϕ 1/4 H.B.
7	CRANKCASE OIL DIPSTICK
8	CRANKCASE OIL FILLER
9	CRANKCASE OIL FILTER
10	ENGINE OIL DRAIN - M18x1.5
11	AIR INLET FILTER
12	OPTIONAL DRY EXHAUST ELBOW - SEE DETAIL
13	CLOSED CRANKCASE VENTILATION SYSTEM
14	ELECTRIC STARTER
15	PRIMARY FUEL FILTER
16	FINAL FUEL FILTER
17	ENGINE CONTROL UNIT
18	OPTIONAL PMG



OPTIONAL DRY EXHAUST ELBOW FLANGE DETAIL



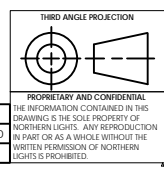
POWER TAKE-OFF PUMP MOUNTING FACE (OPTIONAL)
"C" SPLINE 14T 12/24 D.P.
2 AND 4 BOLT FLANGE



NOTE:
1. FOR M99C13 WITH W/O OPTIONAL PTO, SEE DRAWING D-4693.

THE DIMENSIONS ON THIS DRAWING ARE SUBJECT TO CHANGE. PLEASE CONTACT NLI TO BE SURE YOU HAVE THE MOST CURRENT REVISION.

REV.	DESCRIPTION	DATE	BY	CHECKED
A	UPDATED TO SHOW NEW BASE FRAME. ECN 3765.	2/10/2016	MG	TAH
	REVISIONS			



UNLESS OTHERWISE SPECIFIED, DIMENSIONS ARE IN MILLIMETERS		NAME		DATE		NORTHERN LIGHTS		4420 14th AVE. N.W. Seattle, WA 98107 (206) 789-3880 www.northern-lights.com	
TOLERANCES:		DRAWN	MG	08/06/13				TITLE: INSTALLATION DIMENSIONS	
ANGULAR: MACH: 0.5° BEND ± 1.0°		CHECKED	TAH	09/03/14		M99C13.2S K.C. WITH OPTIONAL PTO		D	D-4775
X ± 3		ENG APPR.				PART NO.		A	A
K ± 2		MFG APPR.				SCALE: 1:10		WEIGHT:	SHEET 1 OF 1
INTERPRET GEOMETRIC TOLERANCING PER: ASME Y14.5M		Q.A.				DO NOT SCALE			
MATERIAL:		COMMENTS:							
FINISH:									