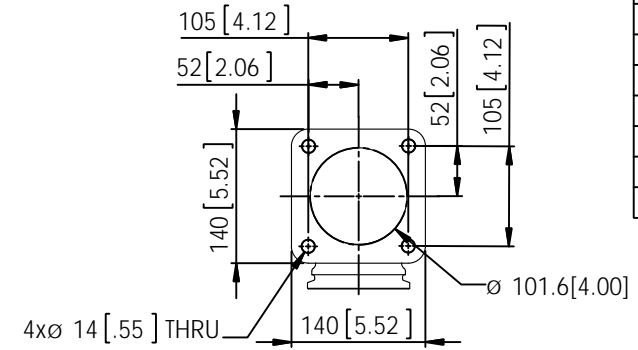
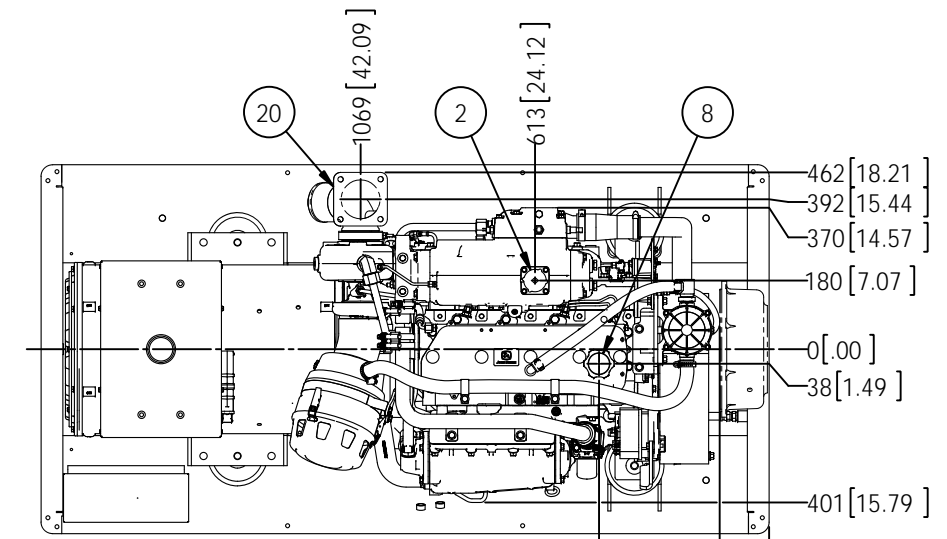


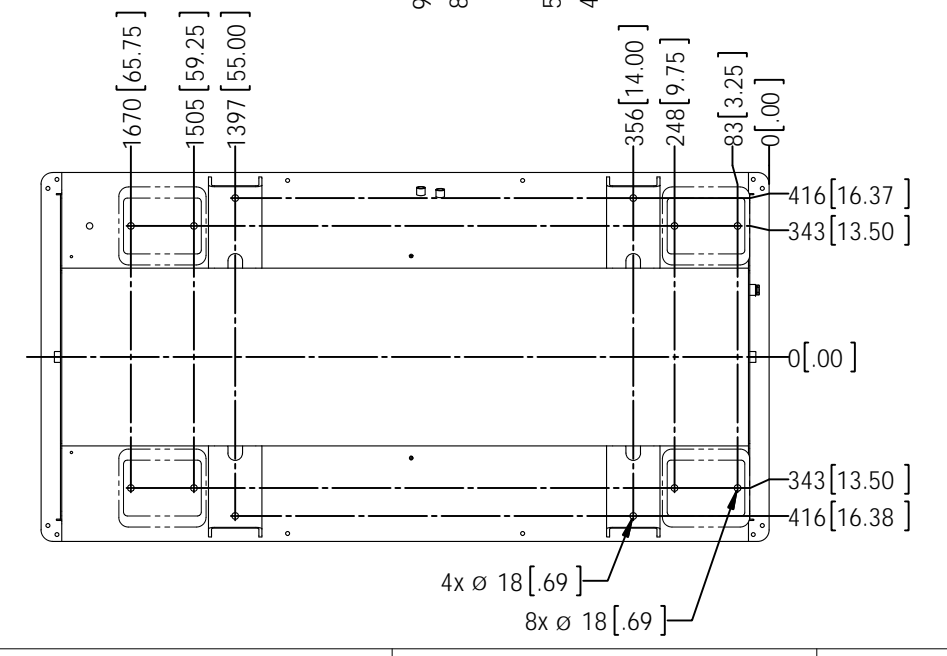
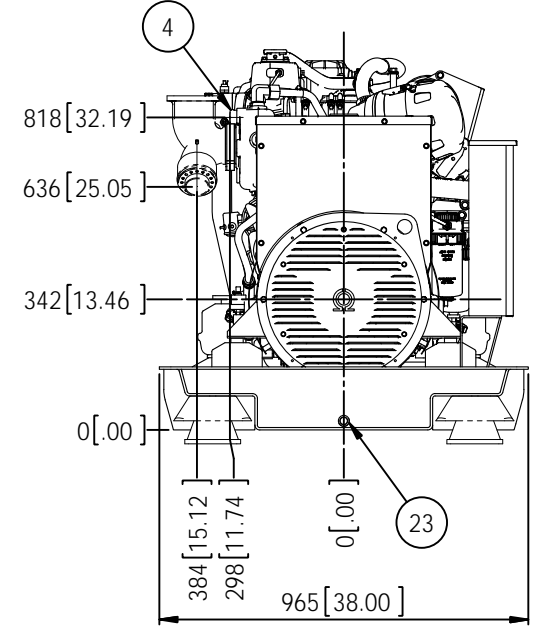
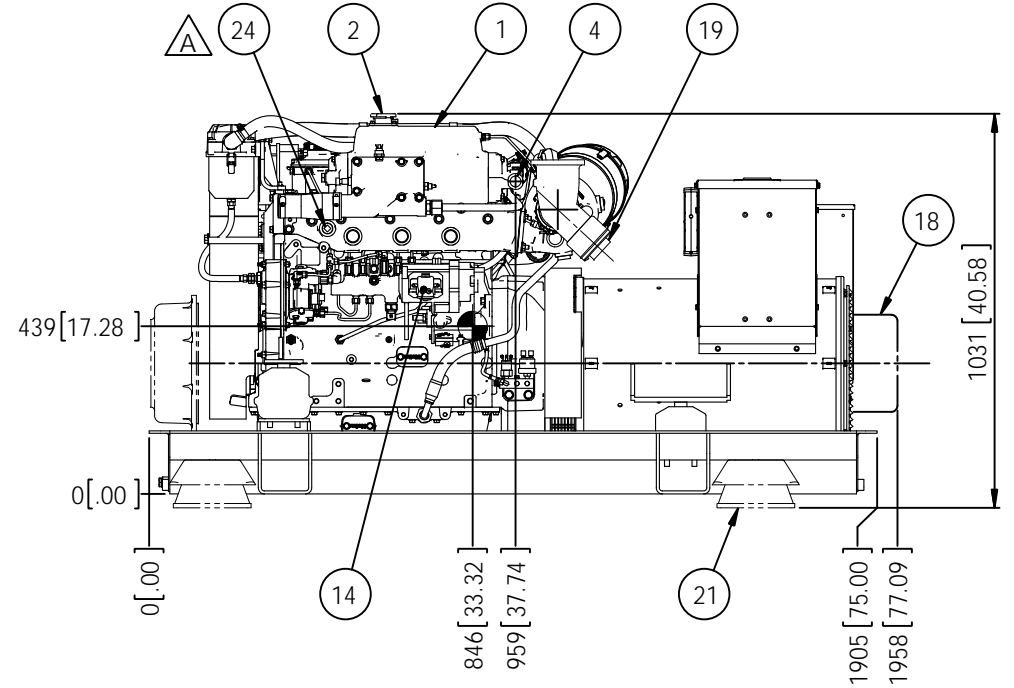
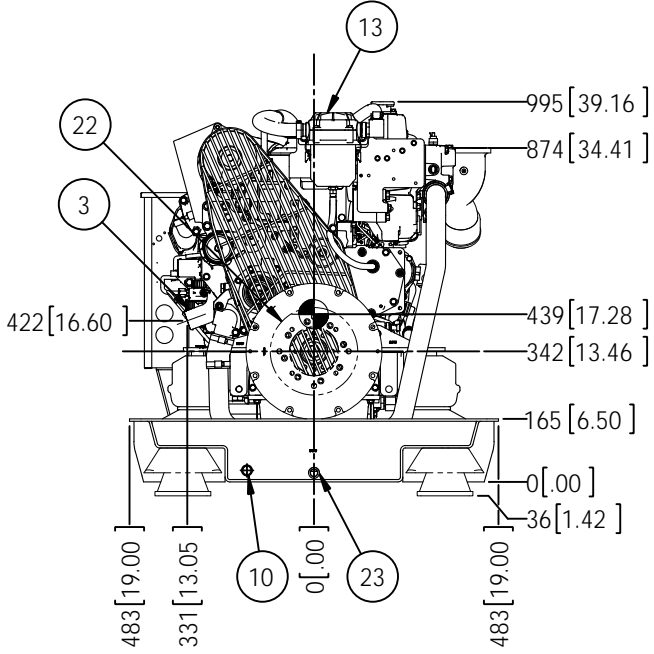
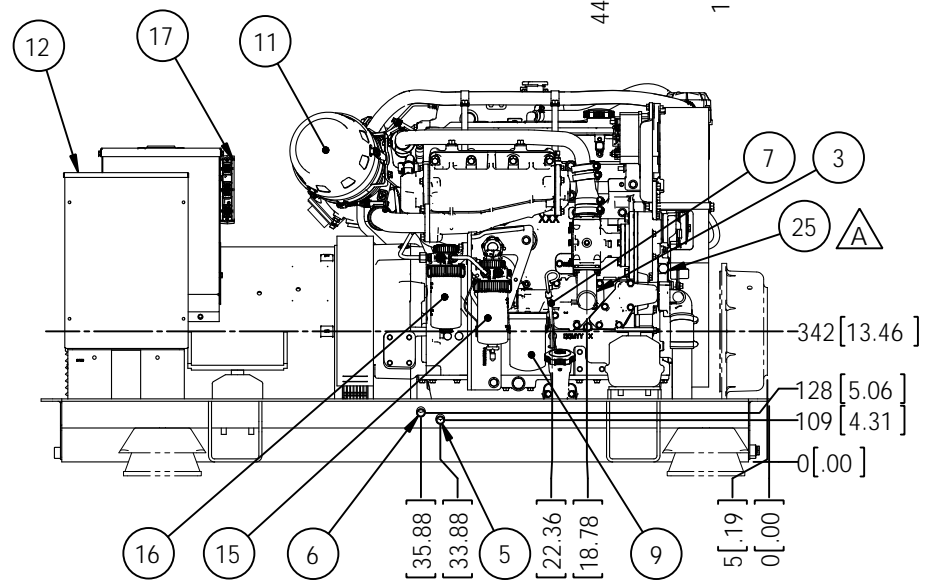
MODELS	APPROX. WT. lbs [kg]
M80A13.11L - 80kW 1800 RPM 60Hz 3 \emptyset	2633 [1194]*

*WITH COOLANT, NO OIL



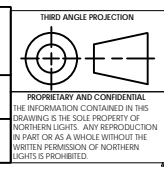
OPTIONAL DRY EXHAUST ELBOW FLANGE DETAIL

ITEM	DESCRIPTION		DESCRIPTION
		14	ELECTRIC STARTER
1	EXPANSION TANK	15	PRIMARY FUEL FILTER
2	COOLANT FILL	16	FINAL FUEL FILTER
3	SEAWATER INLET \emptyset 2.0 H.B.	17	ENGINE CONTROL UNIT
4	SEAWATER OUTLET \emptyset 1.5 H.B. (DRY EXHAUST)	18	OPTIONAL PMG
5	FUEL SUPPLY \emptyset 3/8 NPT	19	OPTIONAL WET EXHAUST ELBOW - \emptyset 4.0 H.B.
6	FUEL RETURN \emptyset 3/8 NPT	20	OPTIONAL DRY EXHAUST ELBOW - SEE DETAIL
7	CRANKCASE OIL DIPSTICK	21	OPTIONAL COMPOUND MOUNTS
8	CRANKCASE OIL FILLER	22	OPTIONAL PTO - "C" SPLINE 14T 12/24 D.P. 2 AND 4 BOLT FLANGE
9	CRANKCASE OIL FILTER	23	BASE PAN DRAIN - 1/2 NPT
10	ENGINE OIL DRAIN - 1/2 NPT	24	HEATER SUPPLY - 3/4 - 14 NPTF
11	AIR INLET FILTER	25	HEATER RETURN - M18 X 1.5 O-RING PORT
12	D.C. JUNCTION BOX		
13	CLOSED CRANKCASE VENTILATION SYSTEM		



THE DIMENSIONS ON THIS DRAWING ARE SUBJECT TO CHANGE. PLEASE CONTACT NLI TO BE SURE YOU HAVE THE MOST CURRENT REVISION.

REV.	DESCRIPTION	DATE	BY	CHECKED
A	ADDED HEATER SUPPLY AND RETURN INSTALLATION POINTS. ECN 3514	9/10/2015	MG	TAH
	REVISIONS			



UNLESS OTHERWISE SPECIFIED, DIMENSIONS ARE IN MILLIMETERS (TOLERANCES: ANGULAR: MACH: ±0.5° BEND ± 1.0° X ± 3 KX ± 2)		NAME	DATE		4420 14th AVE. N.W. Seattle, WA 98107 (206) 789-3880 www.northern-lights.com
INTERPRET GEOMETRIC TOLERANCING PER: ASME Y14.5M		DRAWN	08/06/13		
MATERIAL:		CHECKED	TAH	TITLE: INSTALLATION DIMENSIONS M80A13.11L H.E.	
FINISH:		ENG APPR:		SIZE: D PART NO. DWG. NO. REV	
DO NOT SCALE		MFG APPR:		D-4799 A	
		COMMENTS:		SCALE: 1:10 WEIGHT: SHEET 1 OF 1	