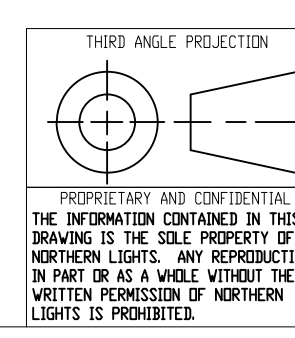
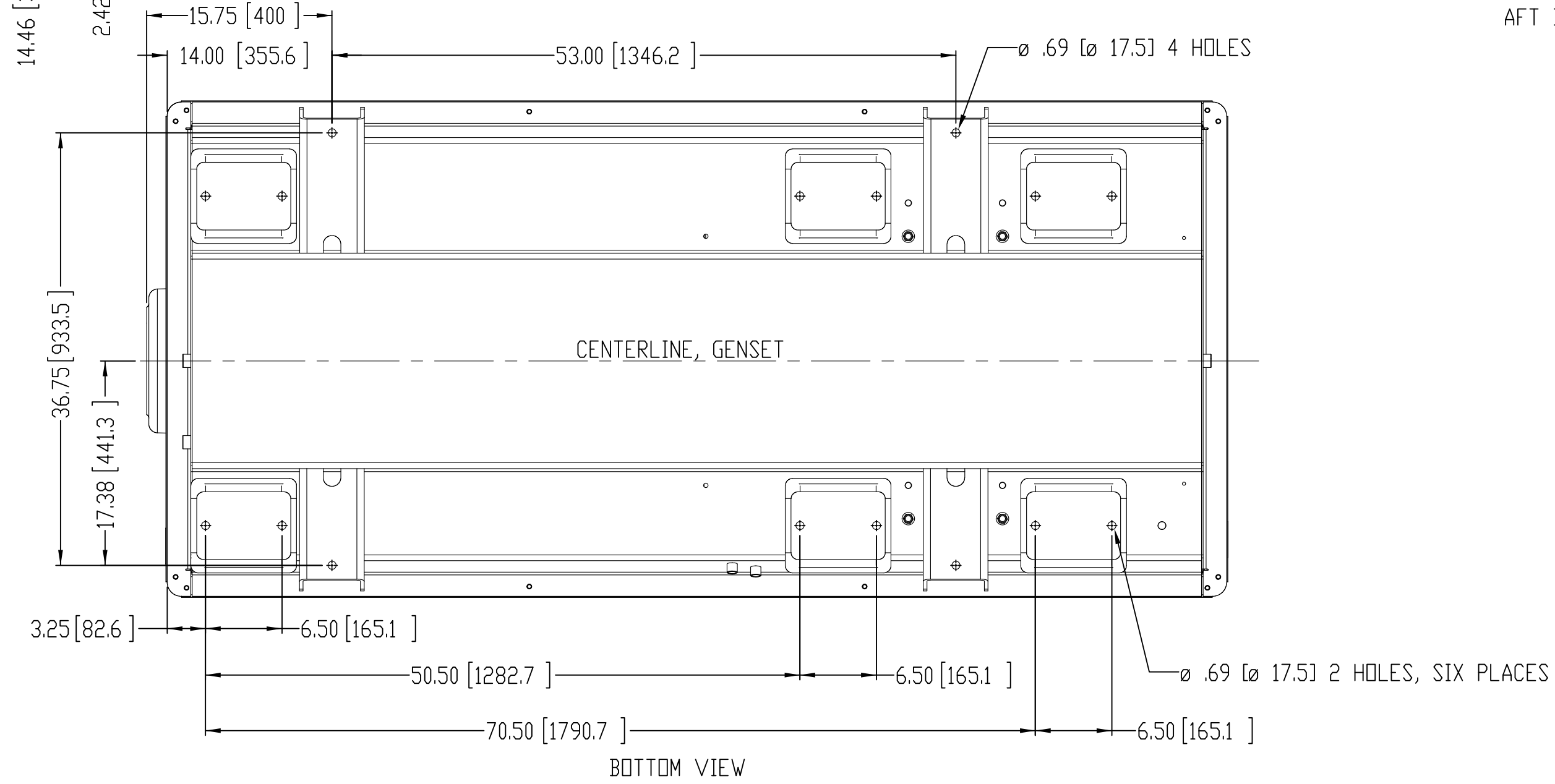
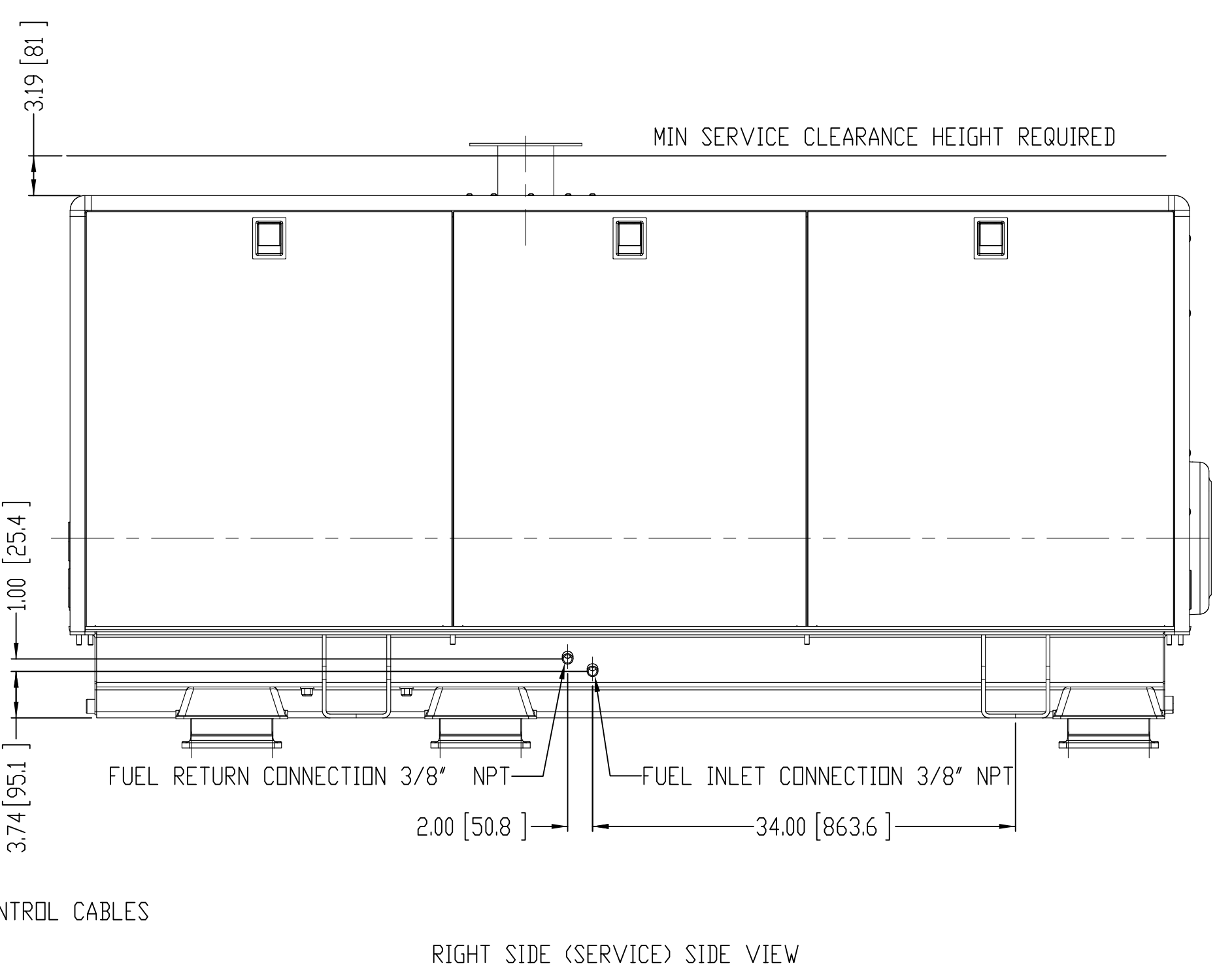
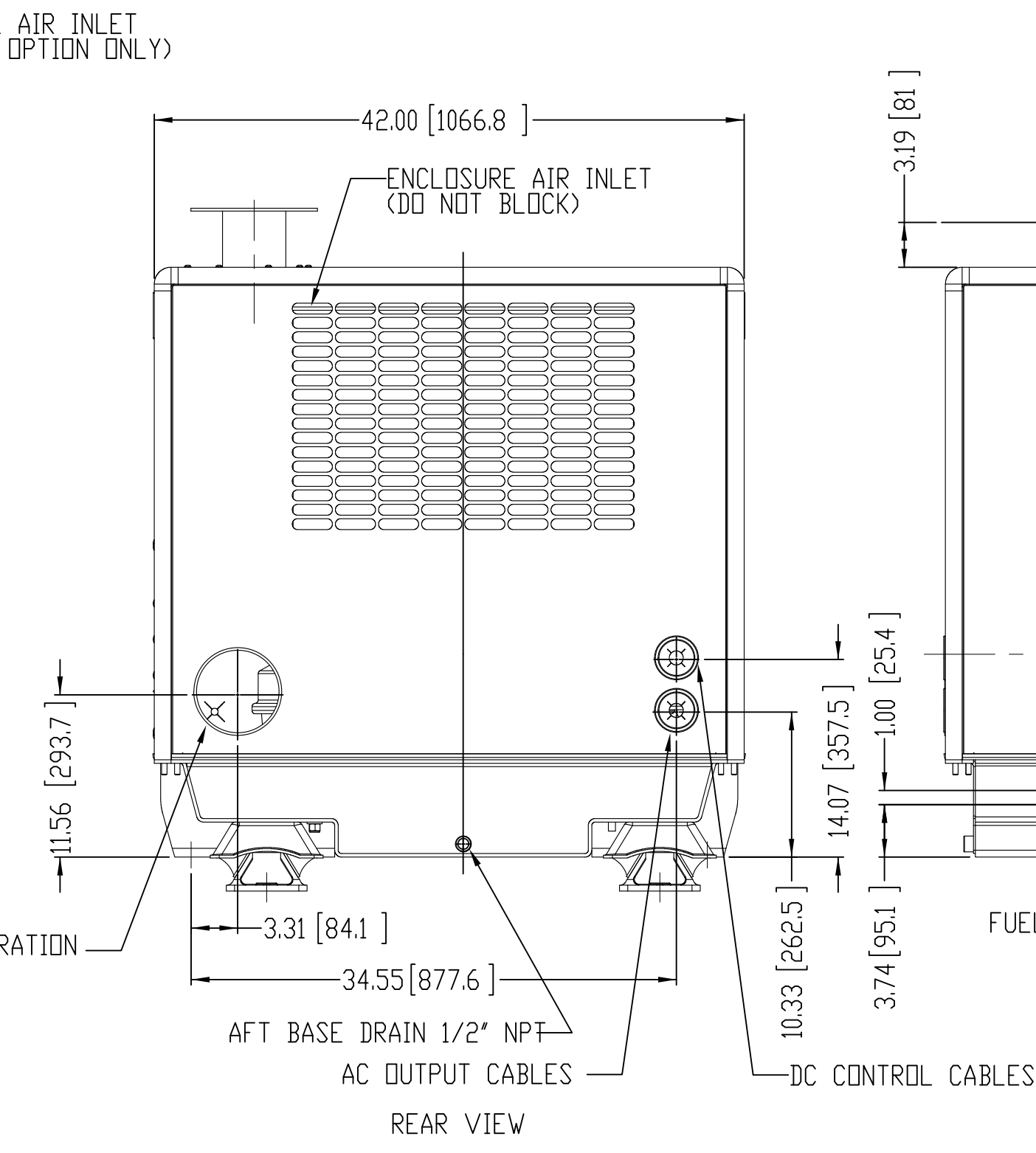
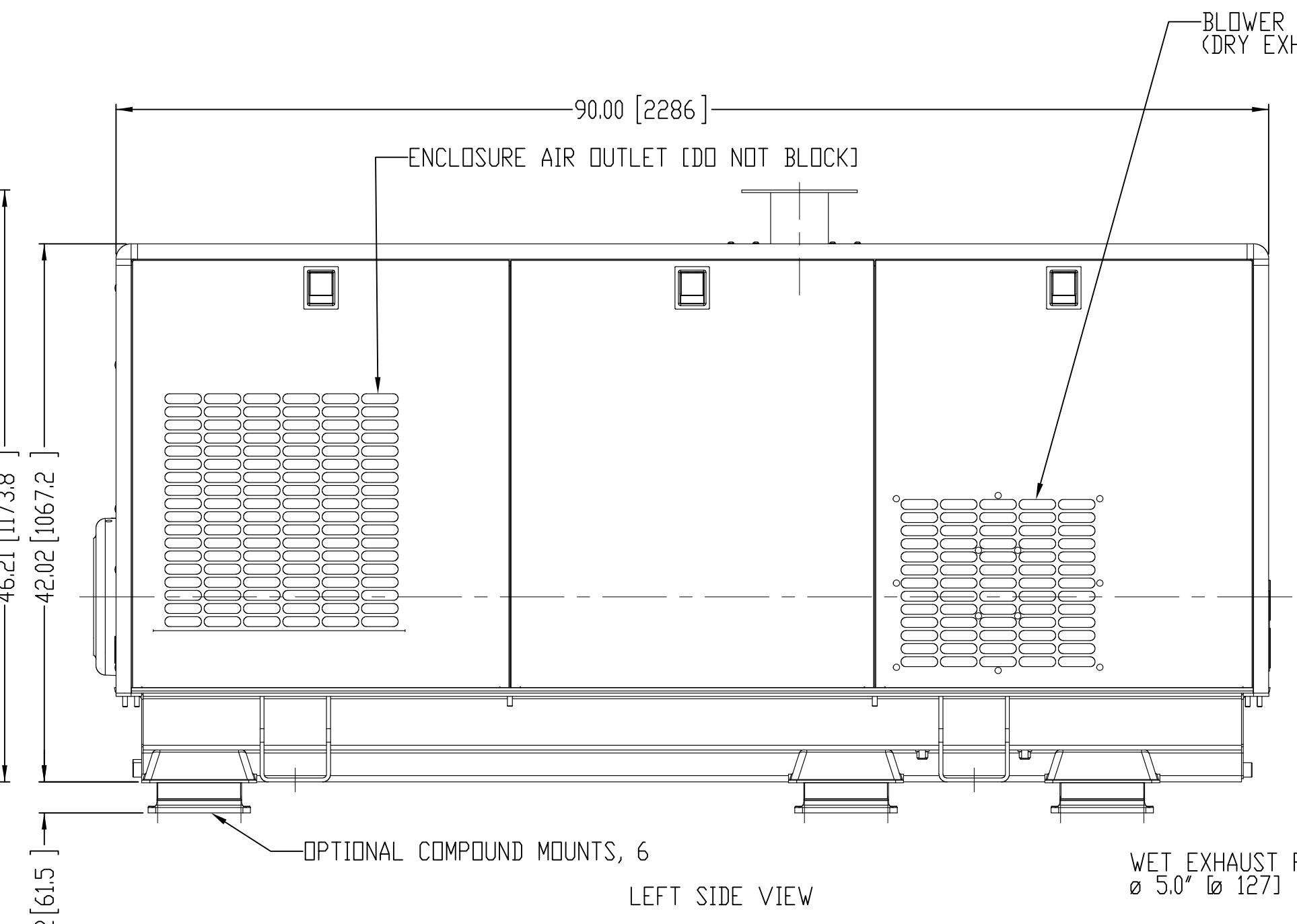
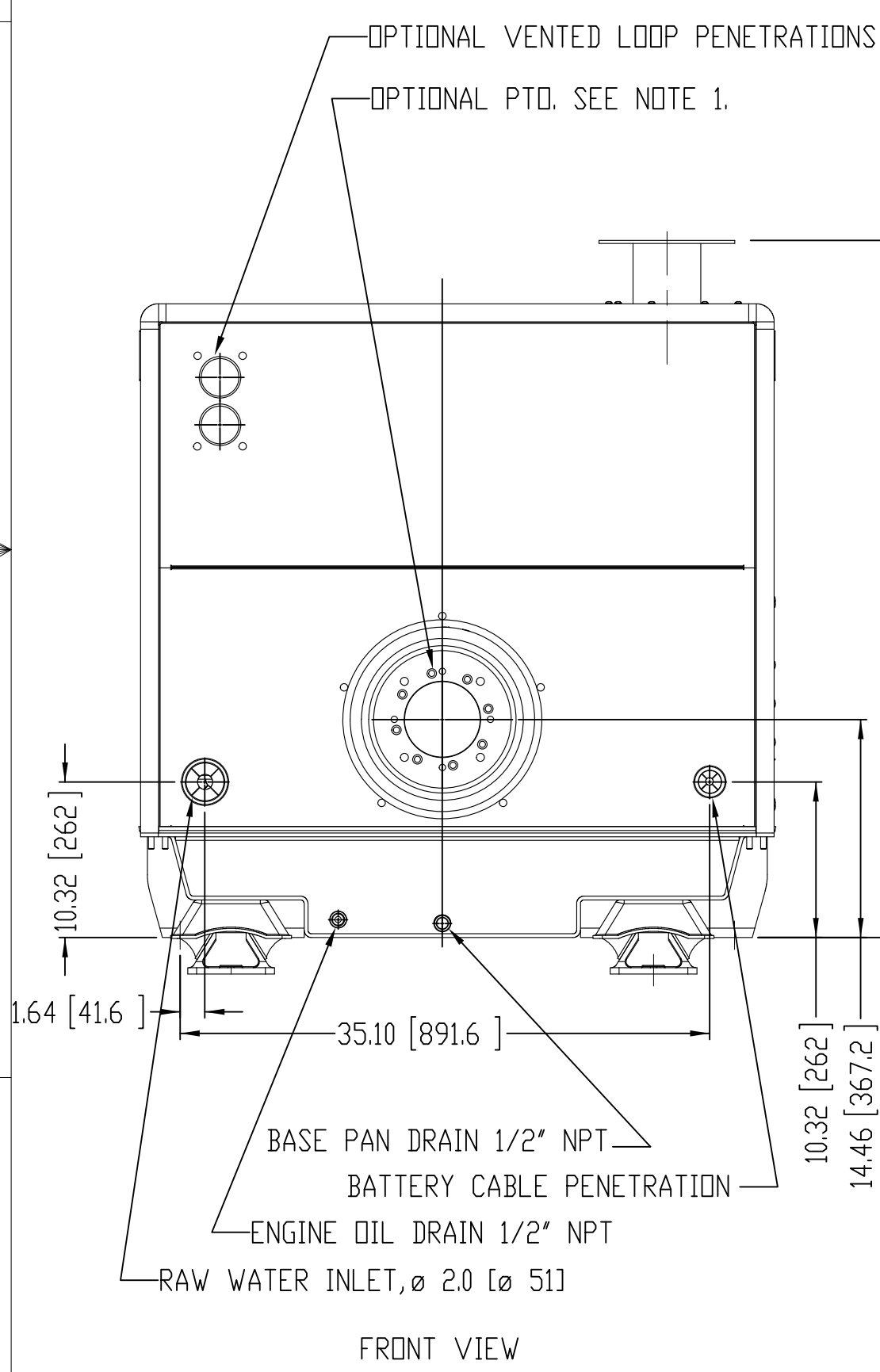
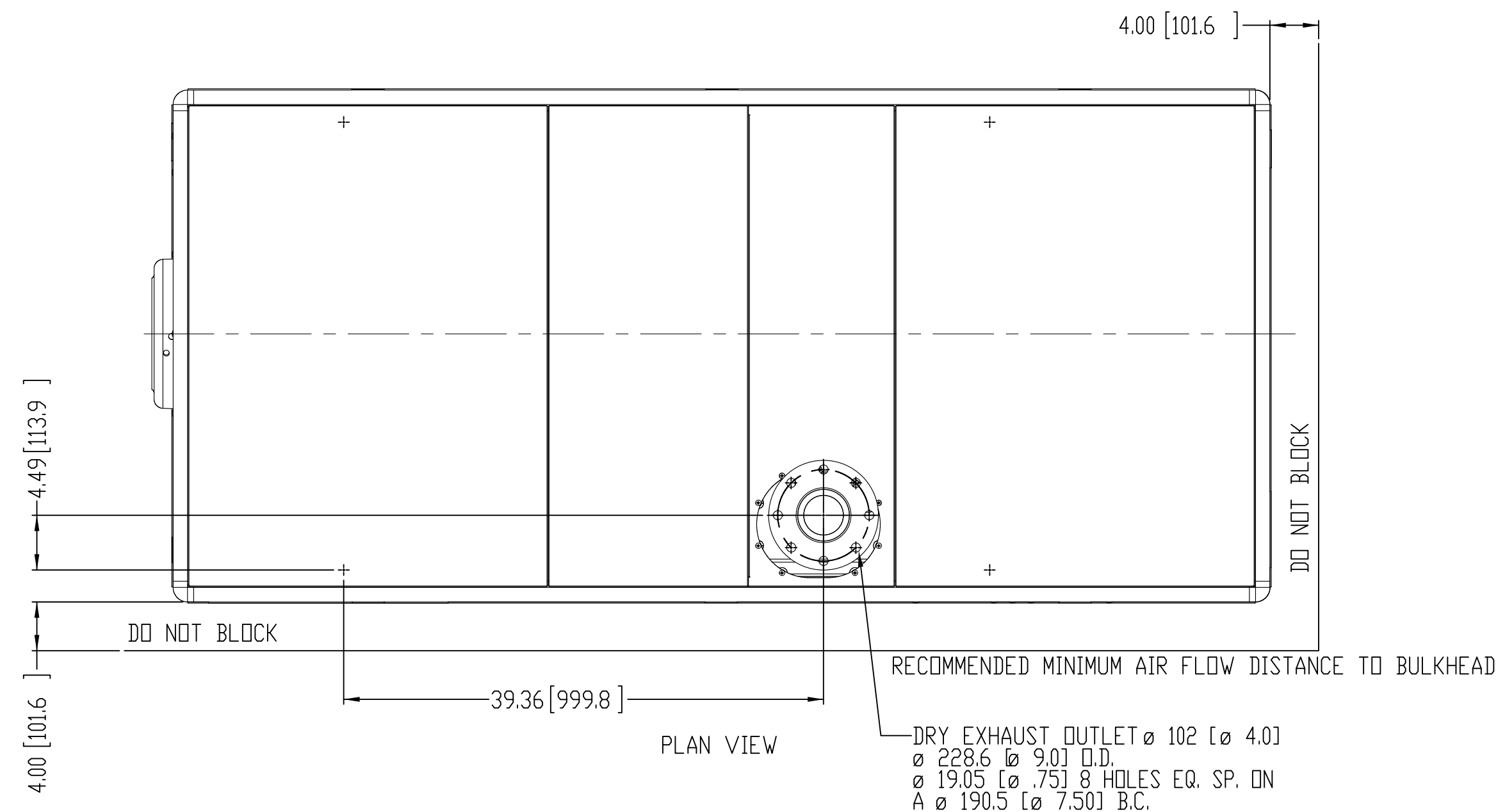


APPLICATION (GENSET +SOUND SHIELD)	EST. WET WT (lbs)(kg)
M1066A1.1IL 130kW 1800 RPM 3	4066 [1844]
M1066A2.1IL 145kW 1800 RPM 3	4155 [1885]
M1066A3.1IL 160kW 1800 RPM 3	4259 [1932]

NOTES:
 1. OPTIONAL PTD PUMP MOUNTING FACE.
 C-SPLINE 14T 12/24 D.P.Ø 1-1/4" SPLINE.
 5/8-13UNC-2B THRU (4) EQ. SP. DNØ 7.1258 B.C.
 & 1/2-13UNC-2B THRU (4) EQ. SP. DNØ 6.375 B.C.
 PILOT BORE: Ø 127.00/126.94 [Ø 5.000/4.998]



UNLESS OTHERWISE SPECIFIED: DIMENSIONS ARE IN MILLIMETERS	NAME	DATE
TOLERANCES: ANGULAR: MACH ± 0.5° BLIND ± 10° X ± 0.15 XX ± 0.3	DRAWN LTP	1/24/13
INTERPRET GEOMETRIC TOLERANCING PER: ASME Y14.5M	CHECKED TAH	1/27/15
MATERIAL:	ENG APPR.	
FINISH:	MFG APPR.	
DO NOT SCALE	QA	
	COMMENTS:	

NORTHERN LIGHTS
 4420 14th AVE. N.W.
 Seattle, WA 98107
 (206) 789-3880
 www.northern-lights.com

TITLE: **INSTALLATION DIMENSIONS**
 M1066A1/2/3 w/K27 TURBO

SCALE: 1:10	WEIGHT:	DWG. NO. D-4852	REV
			SHEET 1 OF 1