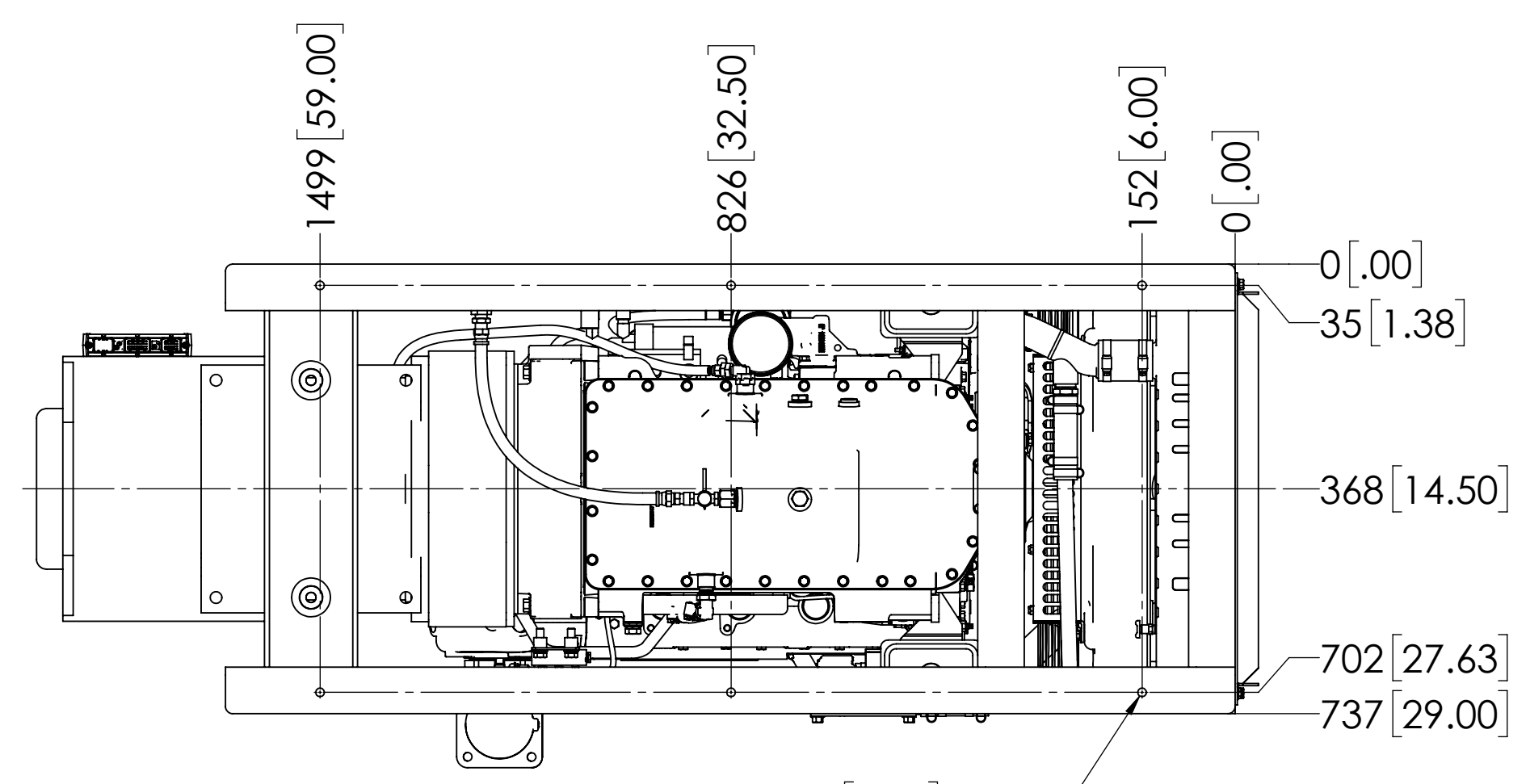
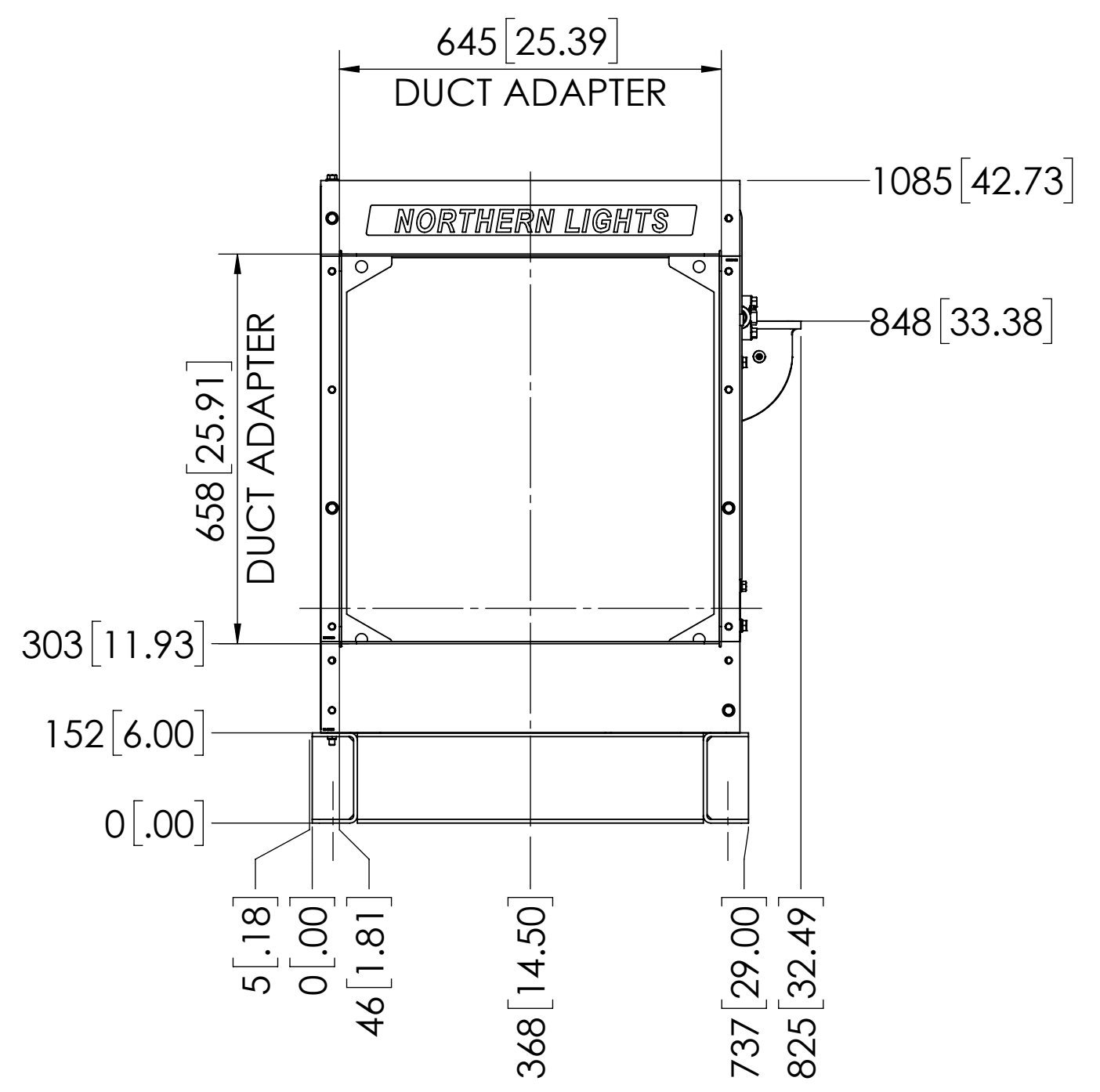
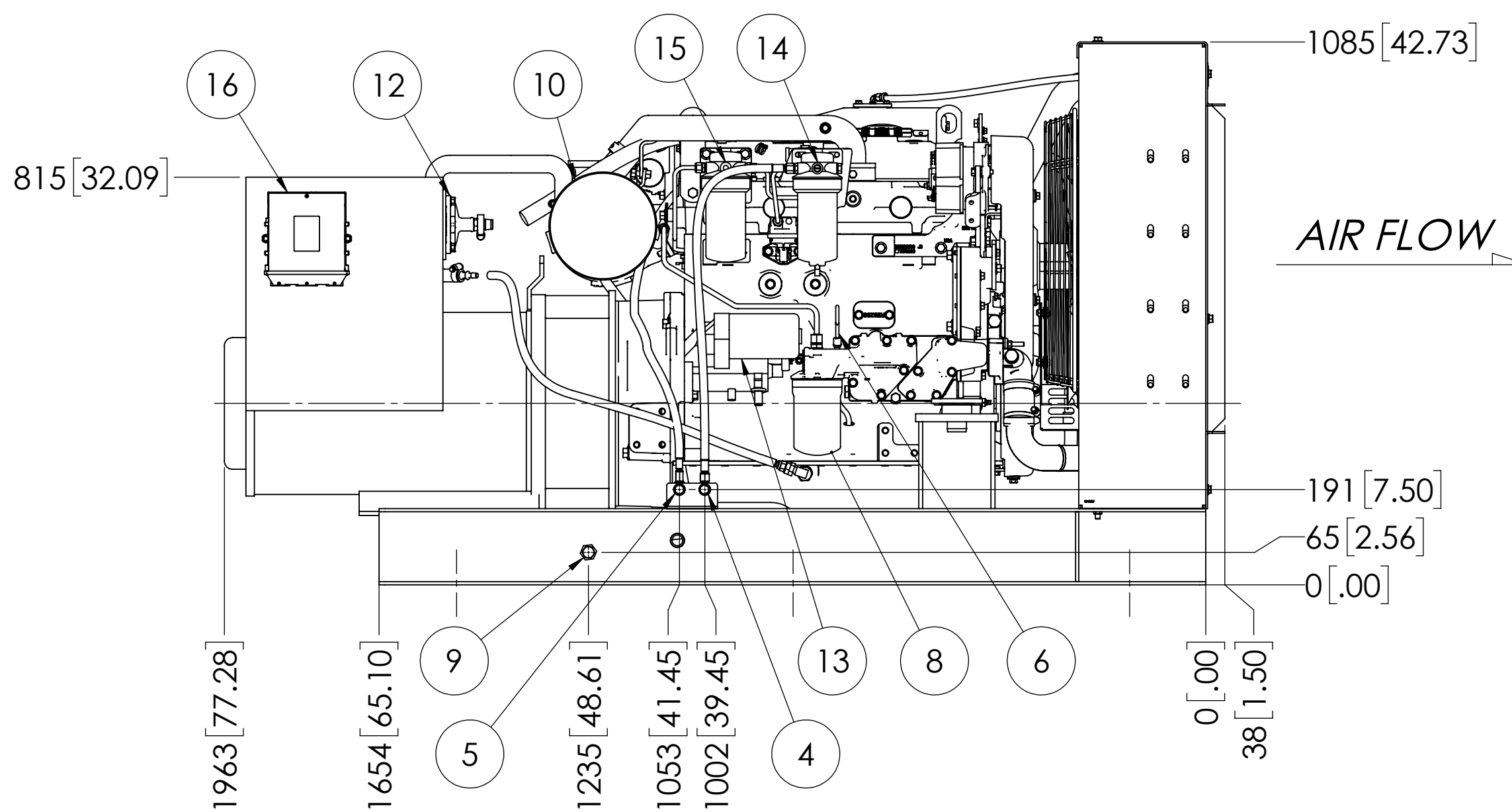


△ **OPTIONAL DRY EXHAUST ELBOW DETAIL**

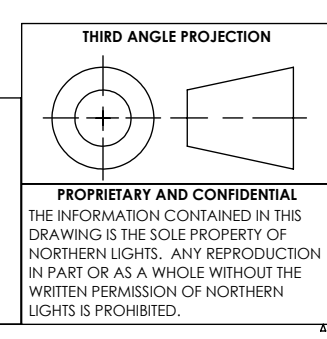
ITEM	DESCRIPTION
1	EXPANSION TANK/COOLED EXHAUST MANIFOLD
2	COOLANT FILL
3	D.C. JUNCTION BOX*
4	FUEL INLET - 3/8 NPT*
5	FUEL RETURN - 3/8 NPT*
6	CRANKCASE OIL DIPSTICK
7	CRANKCASE OIL FILLER
8	CRANKCASE OIL FILTER
9	ENGINE OIL DRAIN - 1/2 NPT*
10	AIR INLET FILTER
11	DRY EXHAUST ELBOW - SEE DETAIL*
12	CLOSED CRANKCASE VENTILATION SYSTEM
13	ELECTRIC STARTER
14	PRIMARY FUEL FILTER
15	FINAL FUEL FILTER
16	ENGINE CONTROL UNIT

△ *** OPTIONAL KITS**



NOTE:
 1. EST. WEIGHT - WITH OIL, NO COOLANT: 2350 LBS [1066 kg]
 2. DIMENSIONS IN BRACKETS ARE FOR REFERENCE ONLY.

THE DIMENSIONS ON THIS DRAWING ARE SUBJECT TO CHANGE. PLEASE CONTACT NLI TO BE SURE YOU HAVE THE MOST CURRENT REVISION.



REV.	DESCRIPTION	DATE	BY	CHECKED
A	ADDED OPTIONAL KIT NOTE. ECN 5634.	08/14/18	MG	TAH

UNLESS OTHERWISE SPECIFIED:		NAME	DATE
DRAWN	MG	09/02/14	
CHECKED	TAH	12/16/14	
ENG APPR.			
MFG APPR.			
Q.A.			

NORTHERN LIGHTS 4420 14th AVE. N.W. Seattle, WA 98107 (206) 789-3880 www.northern-lights.com	
INSTALLATION DIMENSIONS M60C13R.2S	
SIZE	PART NO.
D	
SCALE: 1:10	WEIGHT:
DWG. NO.	REV
D-4793	A
SHEET 1 OF 1	