

| ITEM | DESCRIPTION |
|------|--|
| 1 | FUEL INLET - 3/8 NPT |
| 2 | FUEL RETURN - 3/8 NPT |
| 3 | DC CONTROL CABLES |
| 4 | AC OUTPUT CABLES |
| 5 | BASE PAN DRAIN - 1/2 NPT |
| 6 | WET EXHAUST PENETRATION - ϕ 5.00 [127] |
| 7 | BATTERY CABLE PENETRATION |
| 8 | ENGINE OIL DRAIN - 1/2 NPT |
| 9 | RAW WATER INLET - ϕ 2.00 [51] |
| 10 | OPTIONAL DRY EXHAUST OUTLET - ϕ 4.26 [108] ID, ϕ 9.00 [229] OD, ϕ .75 [19] HOLES X8 EQ. SPCD. ON ϕ 7.50 [191] B.C. |

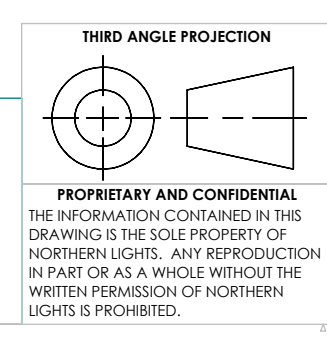
| MODEL | | LBS.[kg] | |
|--------------------------|--|-------------|--|
| M150A13.11L [150kW/60Hz] | | 3790 [1719] | |
| M150A13.51L [125kW/50HZ] | | 3935 [1785] | |

| | | | |
|--|--|------|----------|
| UNLESS OTHERWISE SPECIFIED: | | NAME | DATE |
| DIMENSIONS ARE IN INCHES | | MG | 10/31/18 |
| TOLERANCES: | | | |
| ANGULAR: 9.5° | | | |
| HOLE: \pm 0.1 | | | |
| XX \pm 0.03 | | | |
| XXX \pm 0.05 | | | |
| INTERPRET GEOMETRIC TOLERANCING PER: ASME Y14.5M | | | |
| MATERIAL: | | | |
| FINISH: | | | |
| DO NOT SCALE | | | |

| | | | | | |
|-----------|--|------|--|----------|--|
| DRAWN | | NAME | | DATE | |
| CHECKED | | MG | | 10/31/18 | |
| ENG APPR. | | | | | |
| MEG APPR. | | | | | |
| Q.A. | | | | | |
| COMMENTS: | | | | | |

| | | | |
|-------------|----------|-------------------------|-----|
| TITLE: | | INSTALLATION DIMENSIONS | |
| | | M150A13L | |
| SIZE | PART NO. | DWG. NO. | REV |
| D | | D-5143 | |
| SCALE: 1:10 | WEIGHT: | SHEET 1 OF 1 | |

THE DIMENSIONS ON THIS DRAWING ARE SUBJECT TO CHANGE. PLEASE CONTACT NLI TO BE SURE YOU HAVE THE MOST CURRENT REVISION.



PROPRIETARY AND CONFIDENTIAL
THE INFORMATION CONTAINED IN THIS DRAWING IS THE SOLE PROPERTY OF NORTHERN LIGHTS. ANY REPRODUCTION IN PART OR AS A WHOLE WITHOUT THE WRITTEN PERMISSION OF NORTHERN LIGHTS IS PROHIBITED.



REV D-5143