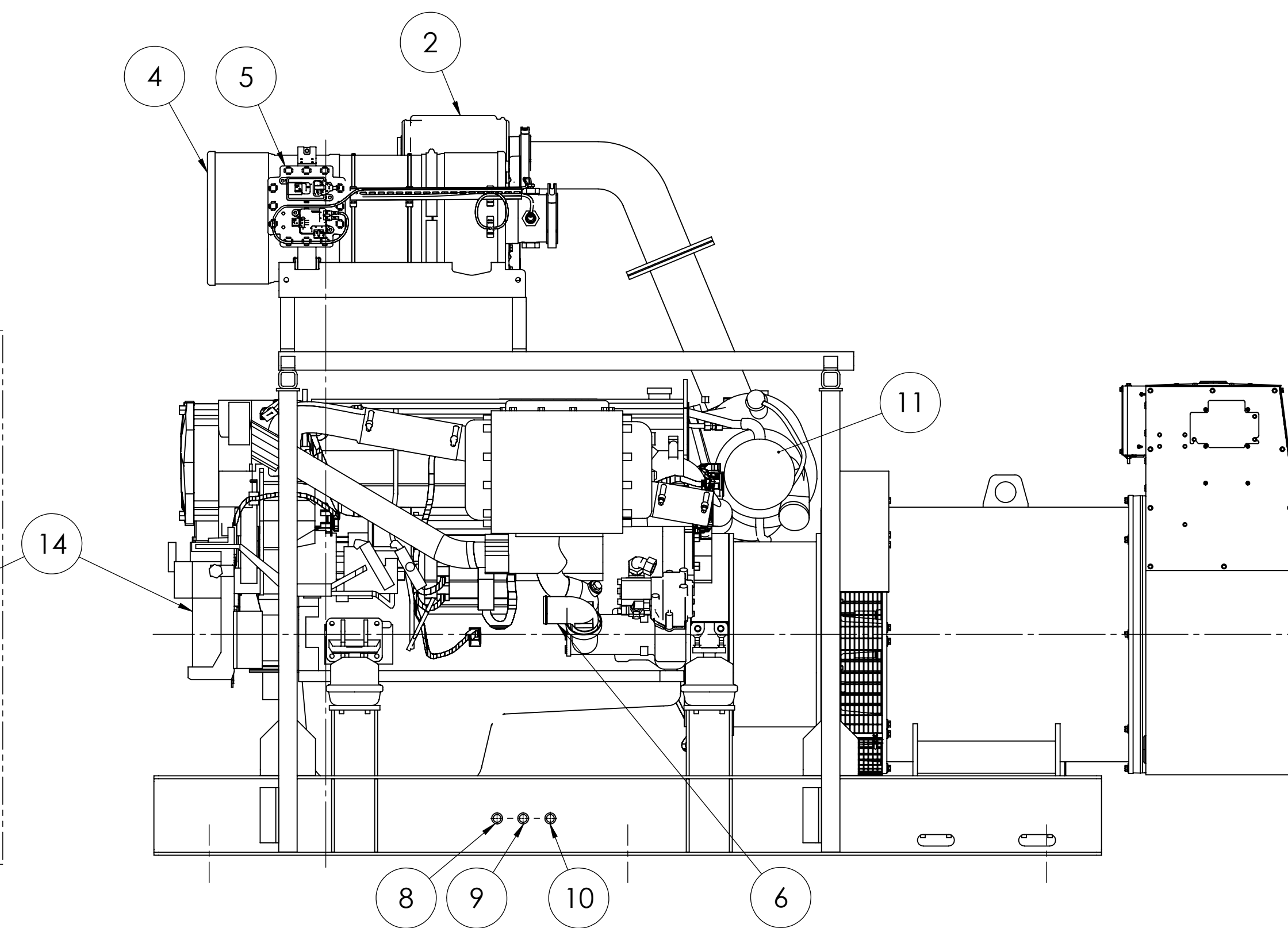
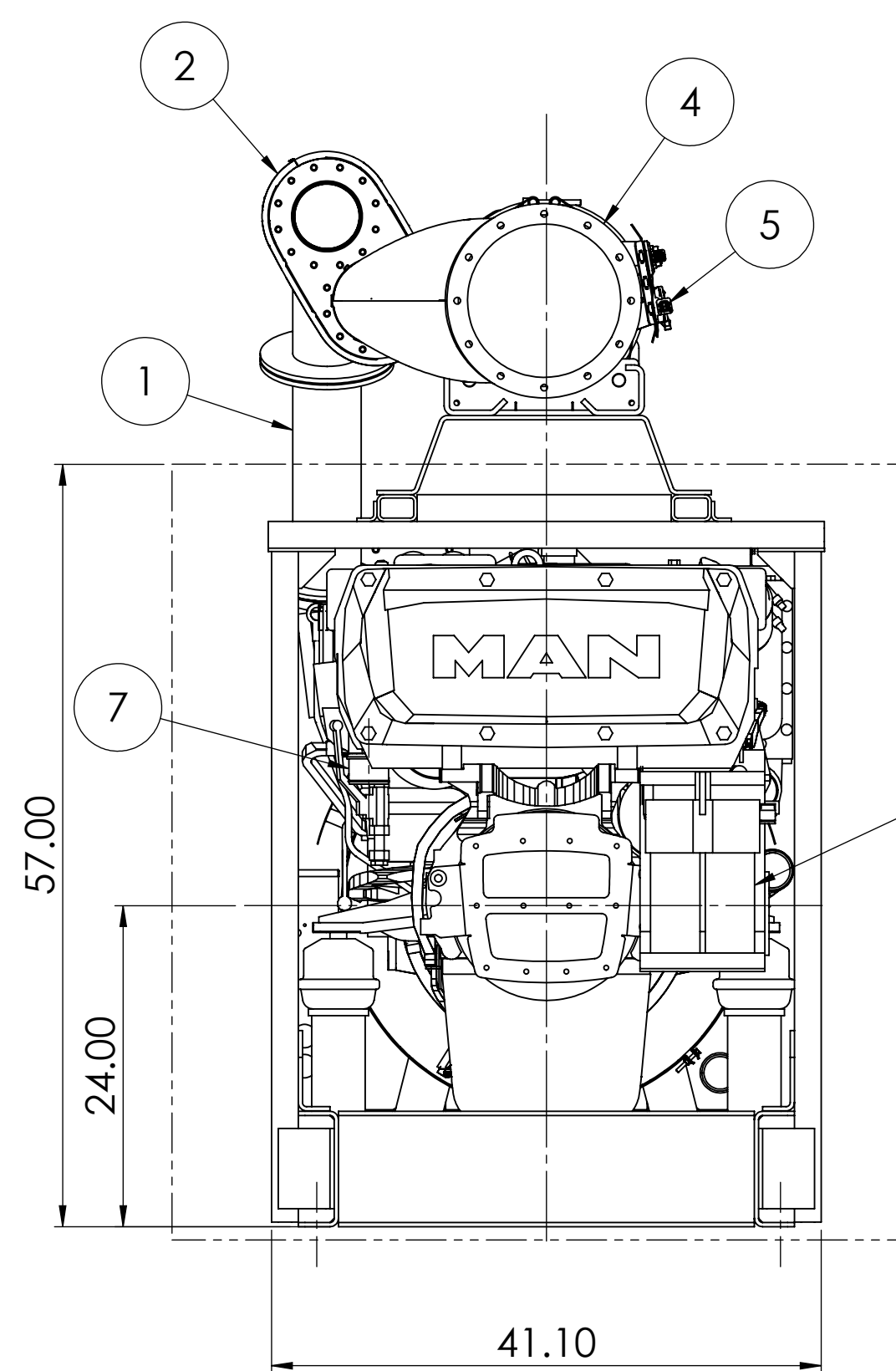
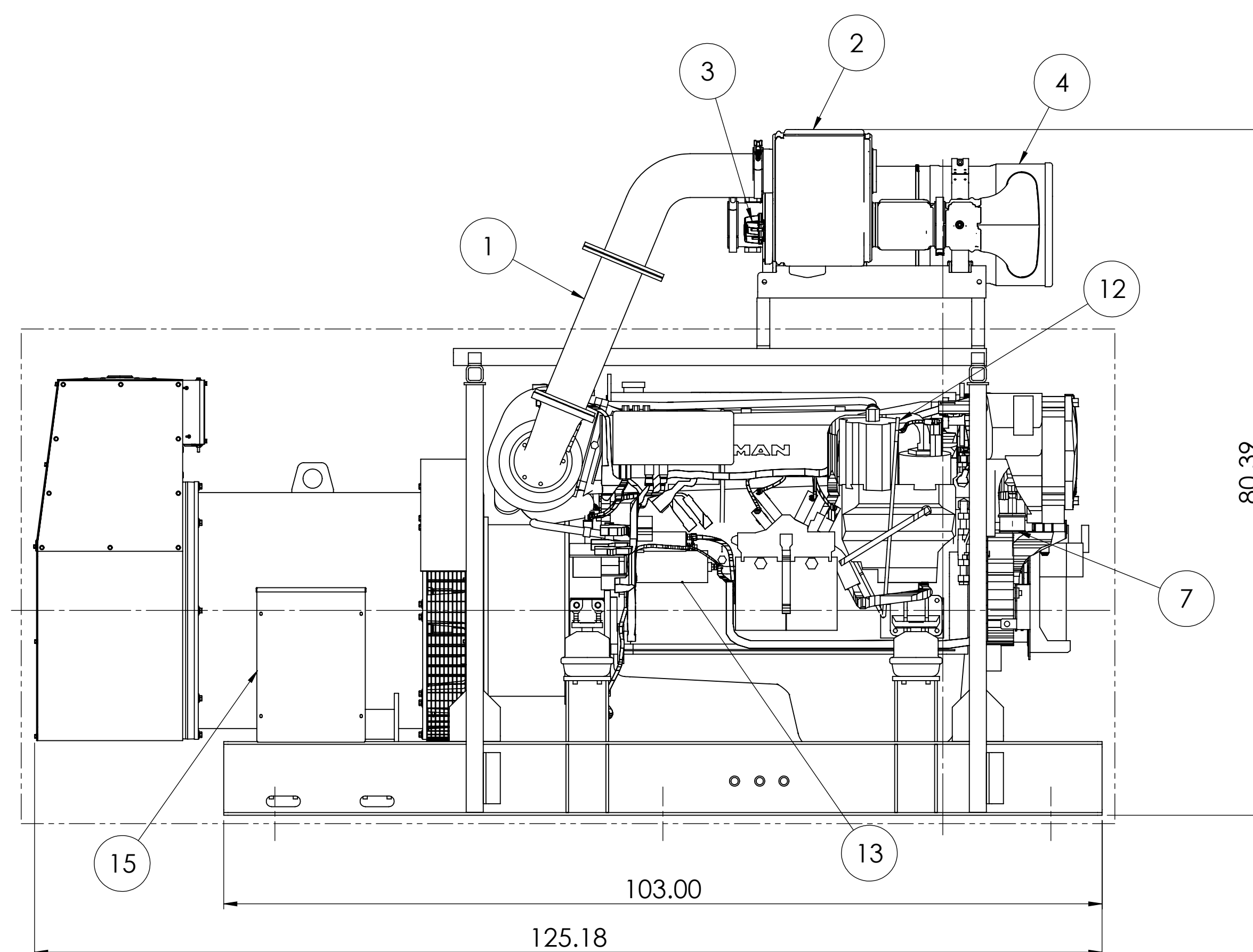


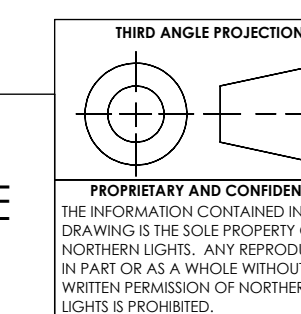
ITEM	DESCRIPTION
1	5" FLEXIBLE EXHAUST CONNECTION
2	DEF DOSING UNIT
3	DEF MIXING UNIT
4	SCR
5	E-PLATE (CAN MODULES)
6	SEA WATER INLET - $\varnothing 2.95"$
7	SEA WATER OUTLET - $\varnothing 2.95"$
8	FUEL SUPPLY - 1/2"NPT
9	FUEL RETURN - 1/2"NPT
10	OIL DRAIN - 1/2"NPT
11	AIR FILTER
12	CRANKCASE OIL DIPSTICK
13	ELECTRIC STARTER
14	FUEL FILTER
15	D.C. JUNCTION BOX



ESTIMATED WEIGHT (DRY): 6440 LBS. [2921 kg]

**PRELIMINARY**

THE DIMENSIONS ON THIS DRAWING ARE SUBJECT TO CHANGE. PLEASE CONTACT NLI TO BE SURE YOU HAVE THE MOST CURRENT REVISION.



UNLESS OTHERWISE SPECIFIED: DIMENSIONS ARE IN INCHES TOLERANCES: ANGULAR: MACH: 0.5° BEND: ± 1.0° XX ± 0.1 XXX ± 0.03 XXXX ± 0.005 INTERPRET GEOMETRIC TOLERANCING PER: ASME Y14.5M		NAME: MG	DATE: 11/16/18		4420 14th AVE. N.W. Seattle, WA 98107 (206) 789-3880 www.northern-lights.com
DRAWN: MG		CHECKED:	ENG APPR:		
FINISH: DO NOT SCALE		G.A. COMMENTS:		TITLE: INSTALLATION DIMENSIONS M1266H23	REV: 1
SIZE: D	PART NO.:	DWG. NO.:	WEIGHT:	D-5232	SHEET 1 OF 1