

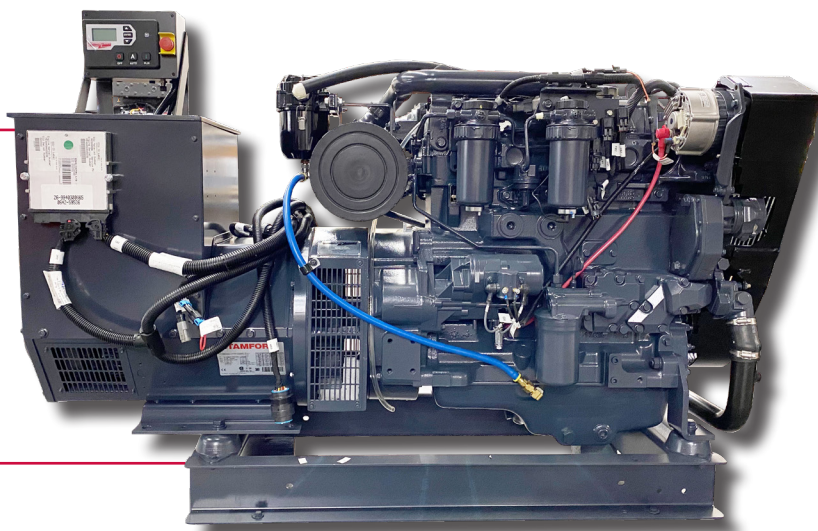


TSC COMMERCIAL CONTROL SYSTEM

NMEA 2000 compatible multi-function display system

To keep pace with requirements for streaming electronics,

Northern Lights is pleased to offer the **TSC Control System**.



S-TSC CONTROL PANEL

The TSC control can be fitted with an optional shielded cable to interface with the ship's multi-function display, for a truly integrated and intuitive generator display experience.

- One touch run/stop function
- Customizable warnings and shutdowns
- Easy-to-read push buttons and backlit LED screen
- Remote Autostart via contact close

FEATURES AND FUNCTIONS

- SAE J1939 CAN bus protocol
- RPM via J1939
- Autostart even on low battery
- Manual and remote start
- Emergency stop
- Passcode protected for vessel security
- Maintenance timing counter
- Exerciser clock
- Tracking log for up to 150 events
- Designed to protect against moisture
- Common sensor (i.e. VDO, Datcon) compatibility.

AVAILABLE DISPLAYS

TSC offers the display data most critical to the proper maintenance and functionality of your Northern Lights generator set. Adding a NMEA2000 gateway and compatible cable allows S-TSC to access all of your vessel's most crucial data.

- Engine temperature
- Oil pressure
- AC metering
- Battery voltage
- Engine speed
- Engine hours
- Time and date
- Custom senders
- Customizable warnings and shutdowns
- Engine warnings and fault codes



TSC COMMERCIAL CONTROL SYSTEM

NMEA 2000 compatible multi-function display system

PROGRAMMABLE ALARMS AND FUNCTIONS

Customize the amount of data that is most important to you.

- Overcrank
- Coolant temperature
- Oil pressure
- DC voltage
- Over/Under voltage
- Over/Under current
- Over/Under frequency

Available with local and remote panel access, with a sleek simple design that compliments any engine room.

DIMENSIONS (Height x Width x Depth)

Module size: 4.2 in x 6.5 in x 1.4 in

106 mm x 165 mm 35 mm

Local panel enclosure: 5.9 in x 8.3 in x 3.1 in

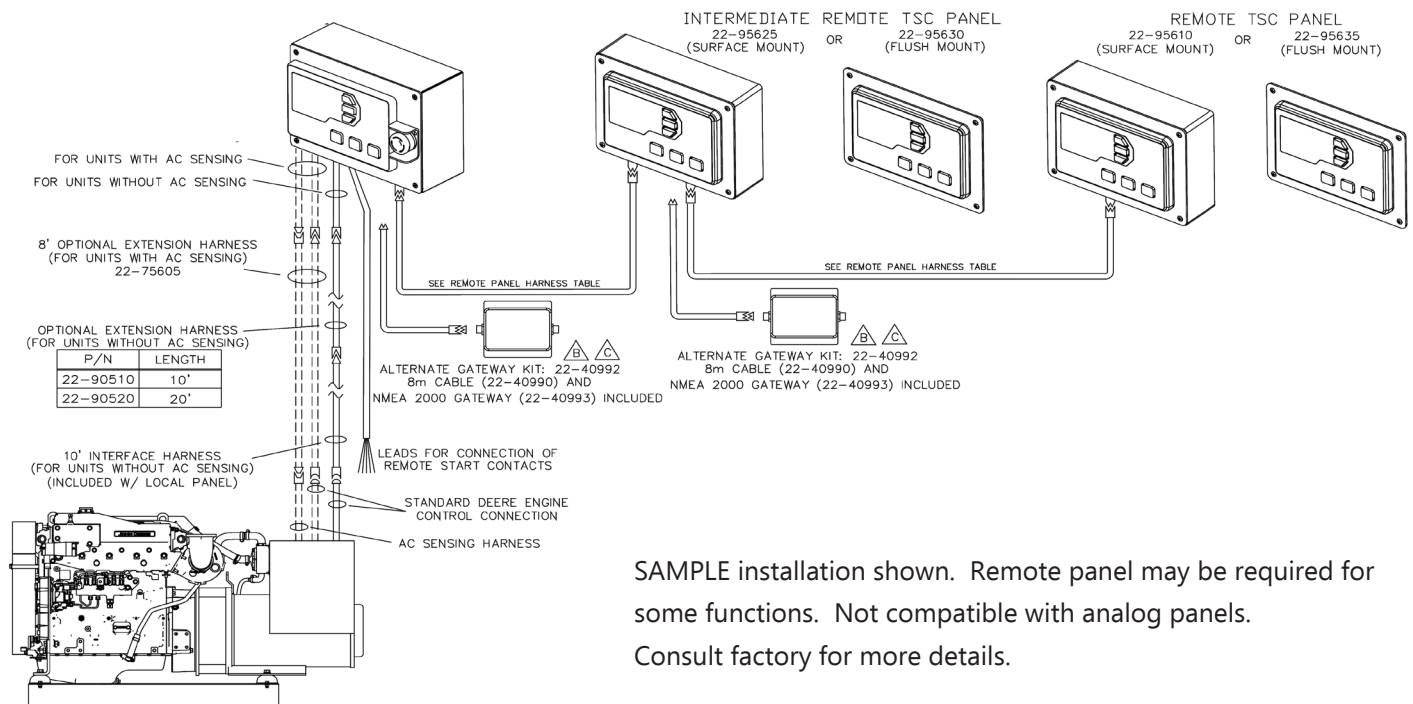
149 mm x 210 mm x 78 mm

Remote panel enclosure: 5.9 in x 8.3 in x 2.4 in

149 mm x 210 mm x 59 mm

NMEA2000 Compatibility

- Available through custom cable, in lengths of 25' (7.5 meters).
- Remote paneling available up to 128' (39 meters).
- Interfaces the S-TSC's SAE J1939 CAN data stream to an NMEA 2000 gateway.
- Reliable twisted-pair cable with 8-pin/5-pin connectors.
- Available on units **up to 99kW**.



SAMPLE installation shown. Remote panel may be required for some functions. Not compatible with analog panels. Consult factory for more details.