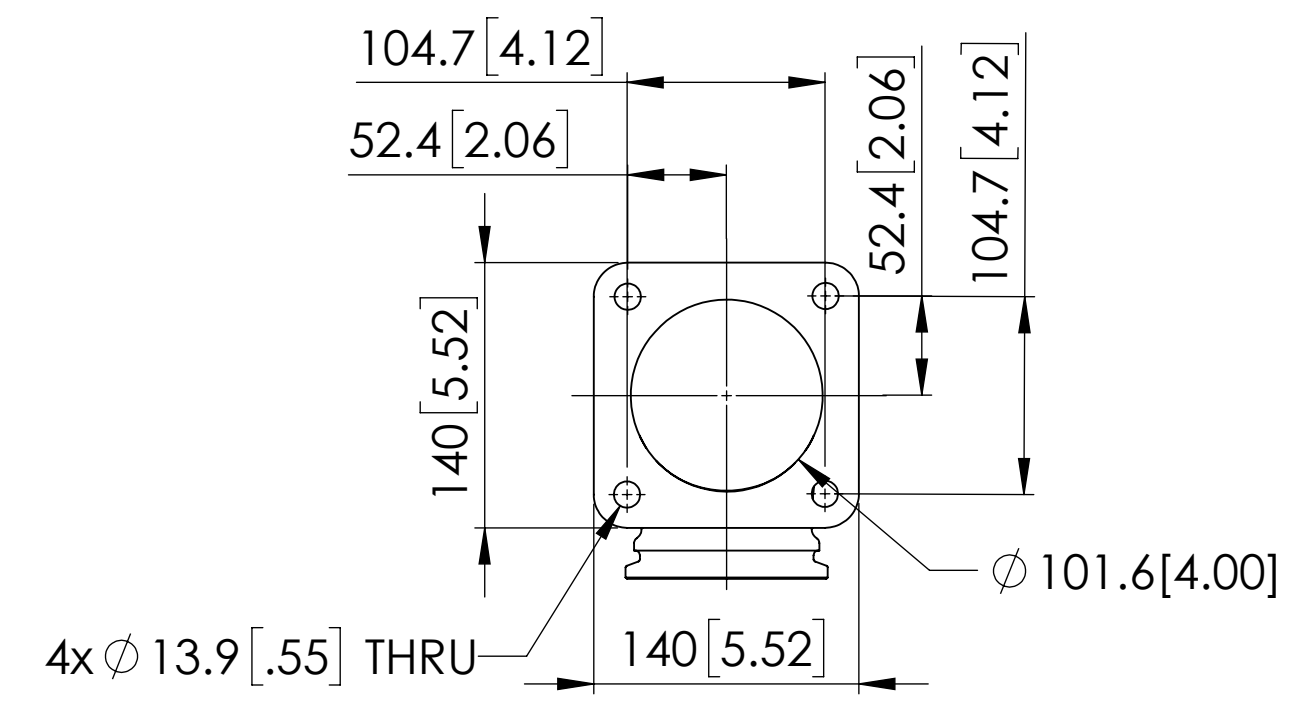
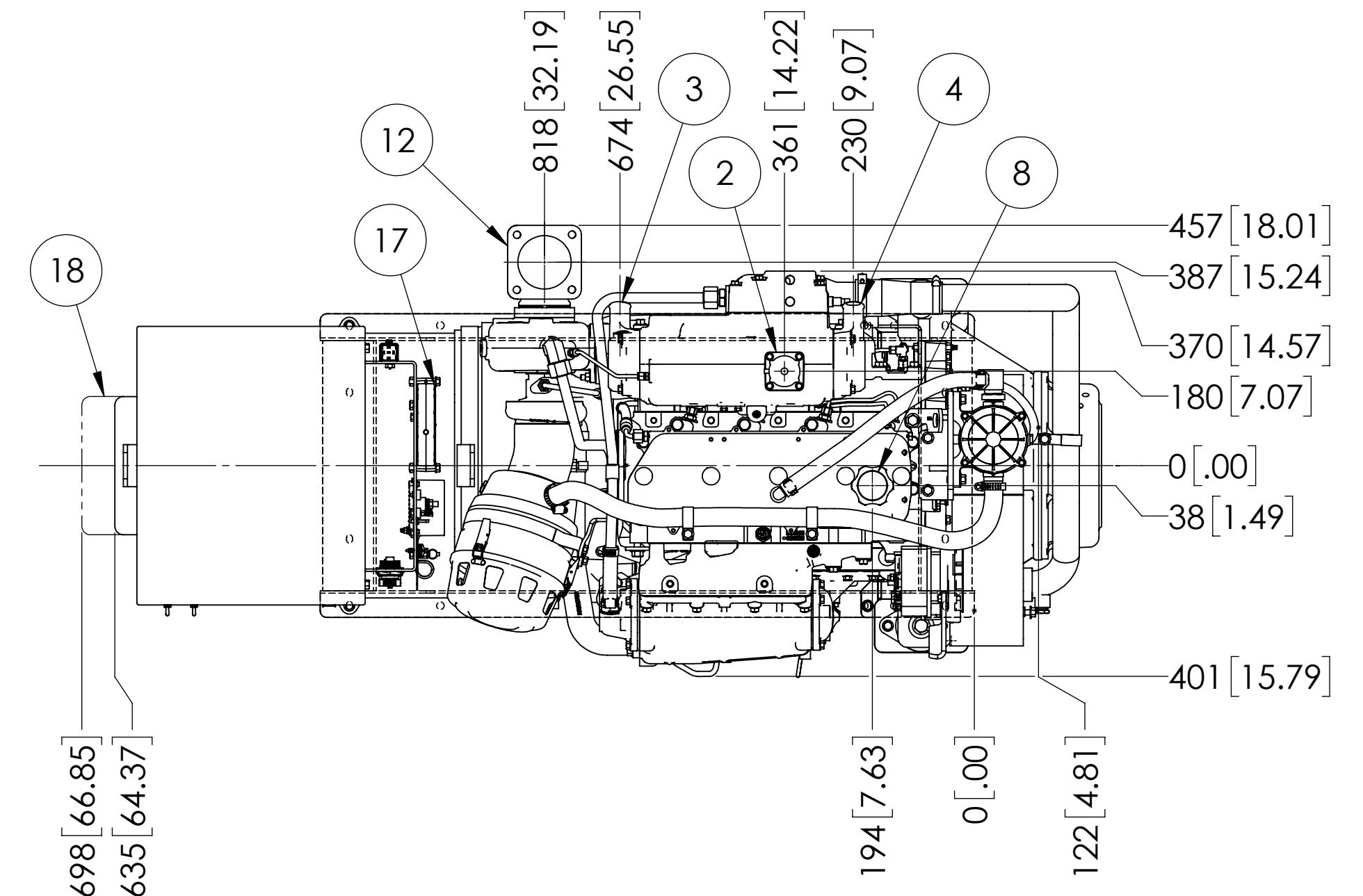
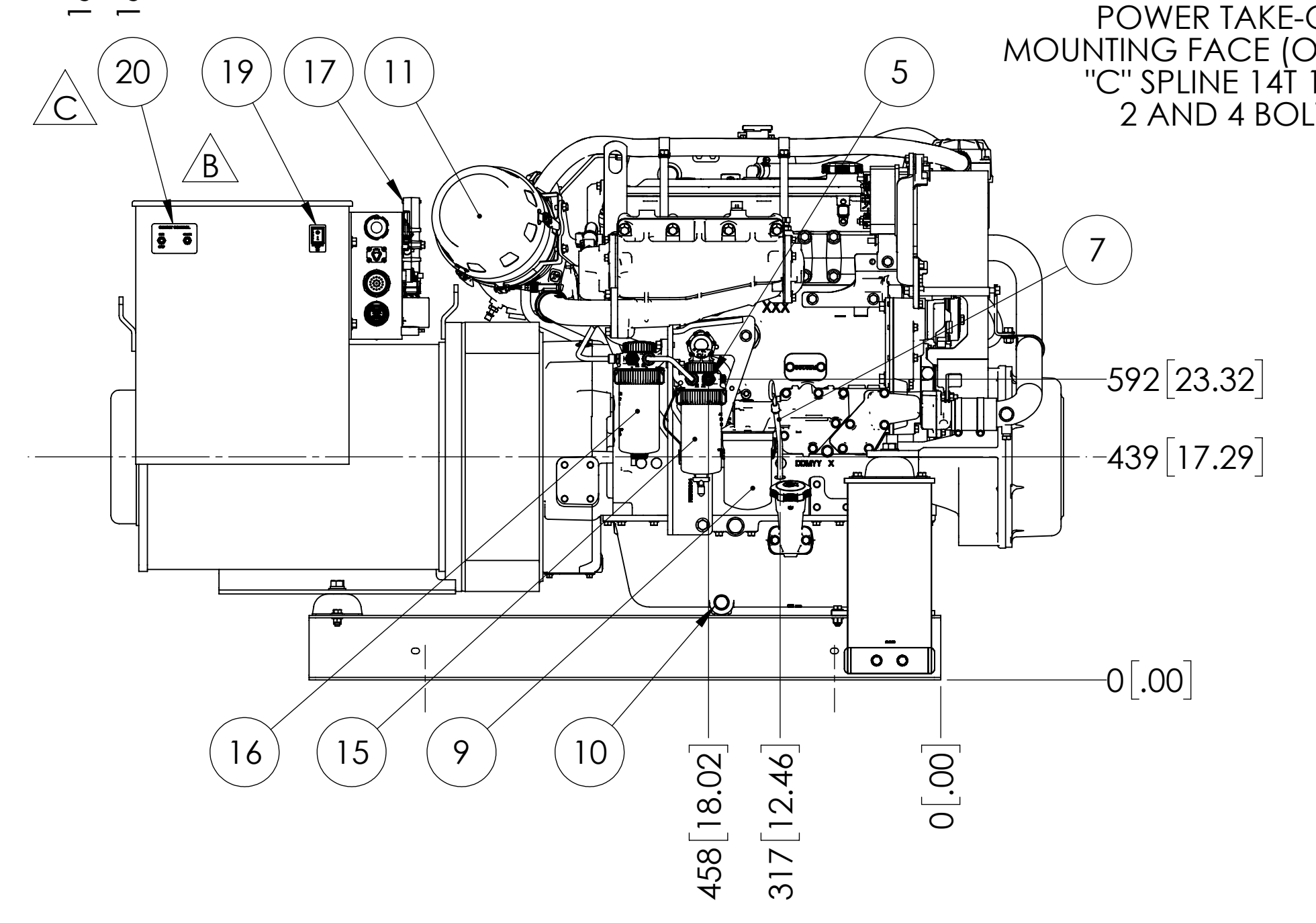


MODELS	APPROX. WT. lbs [kg]
M99C13.2S 99kW 1800 RPM 60Hz 3 $\phi$	2770 [1256]

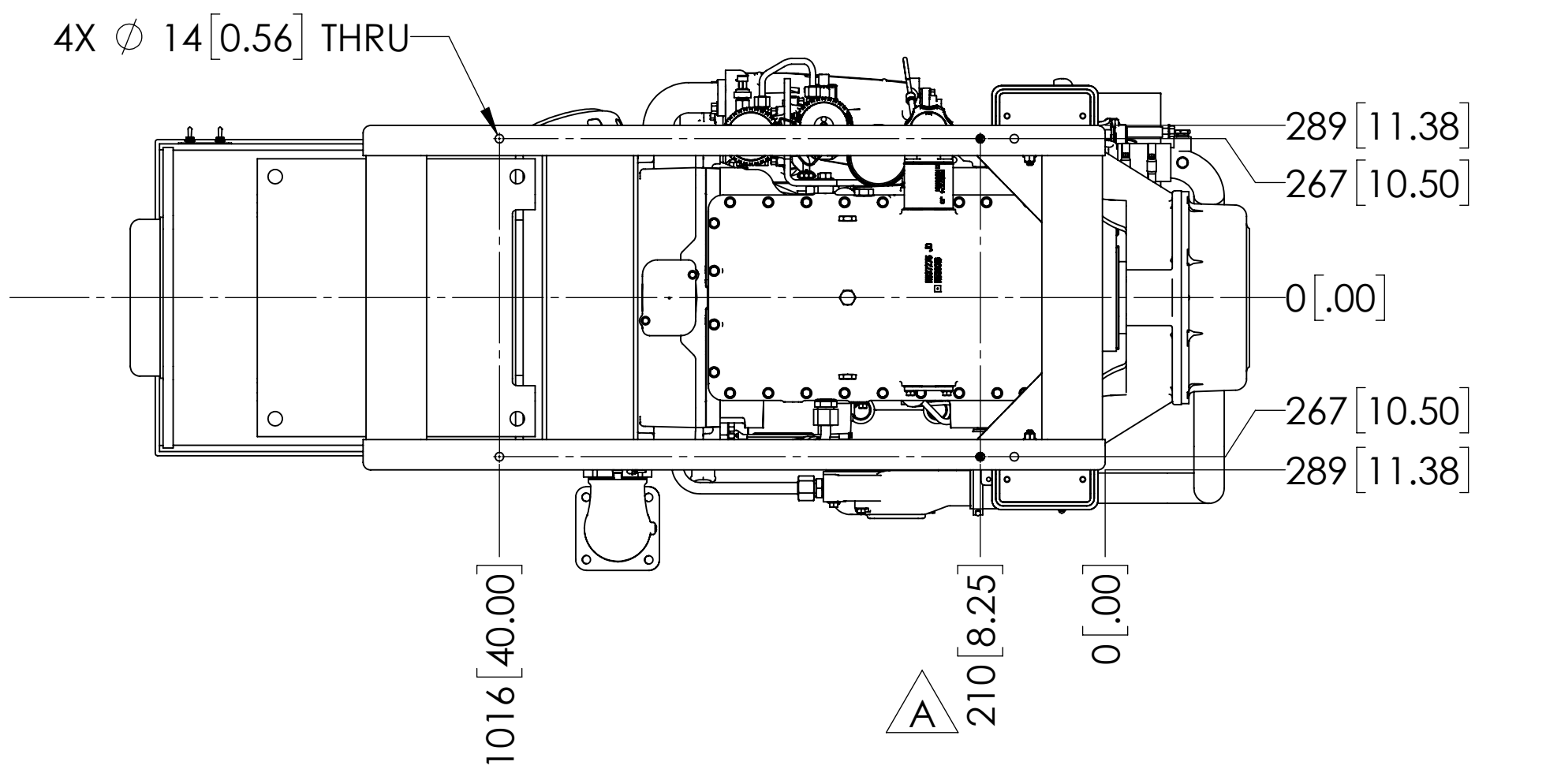
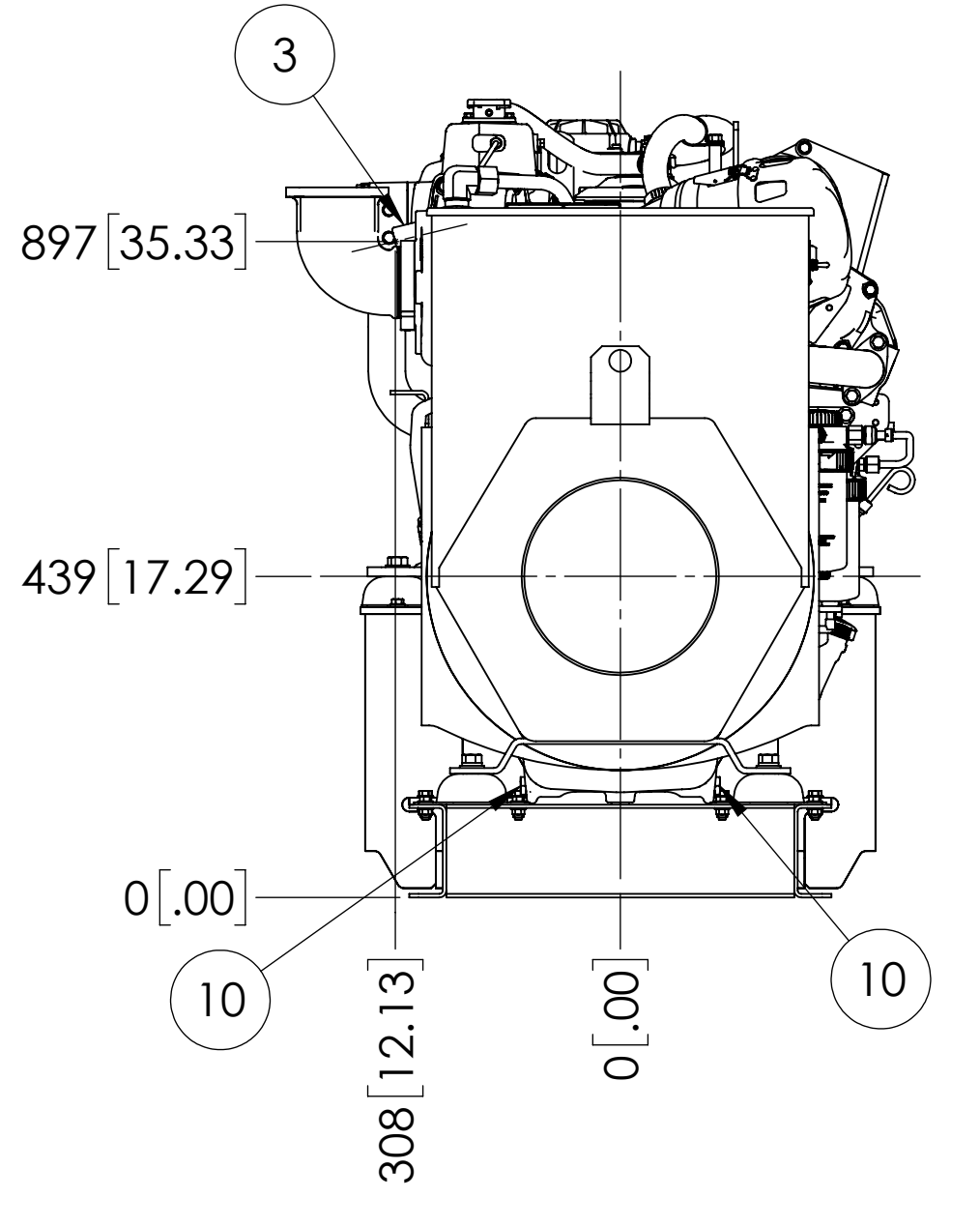
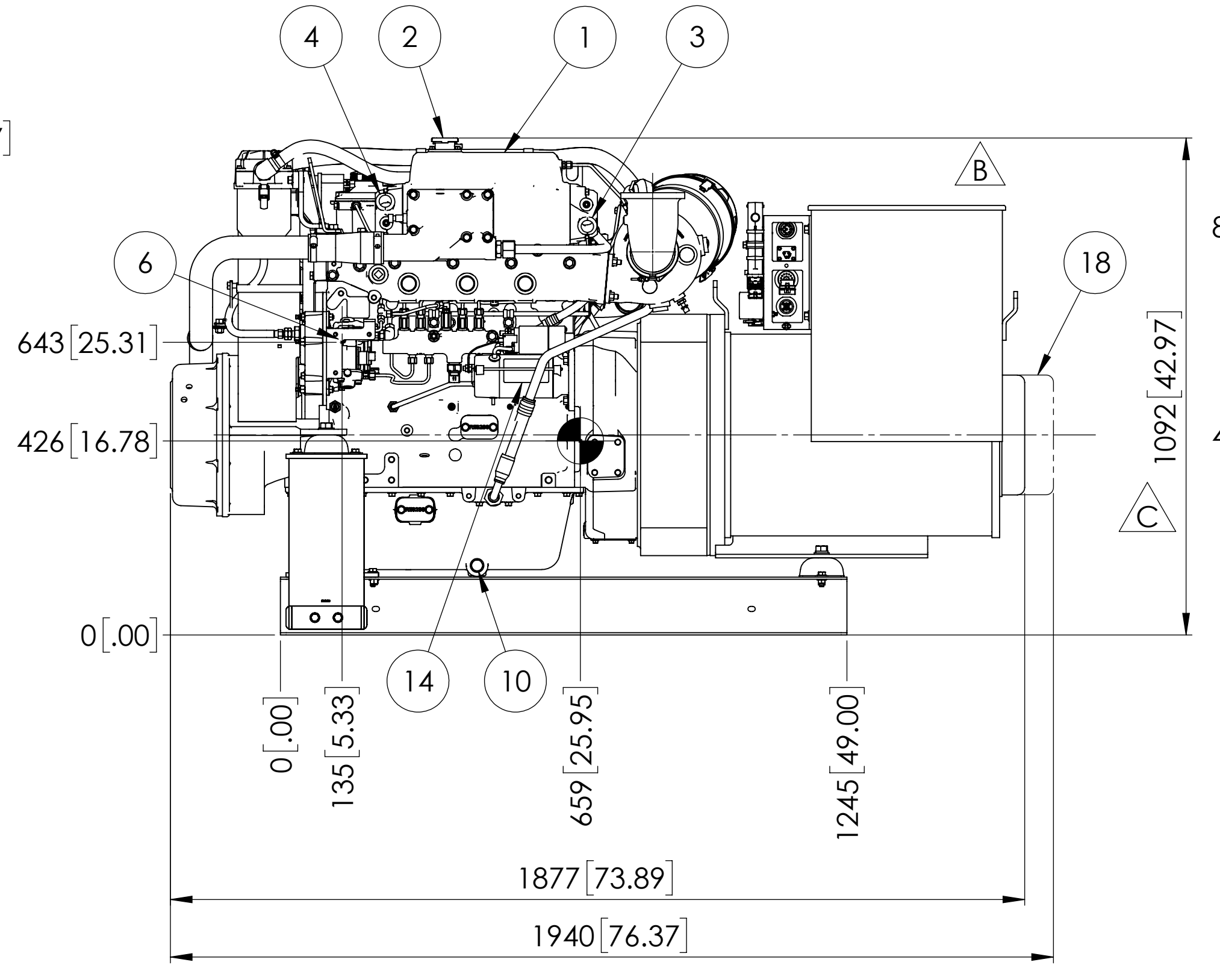
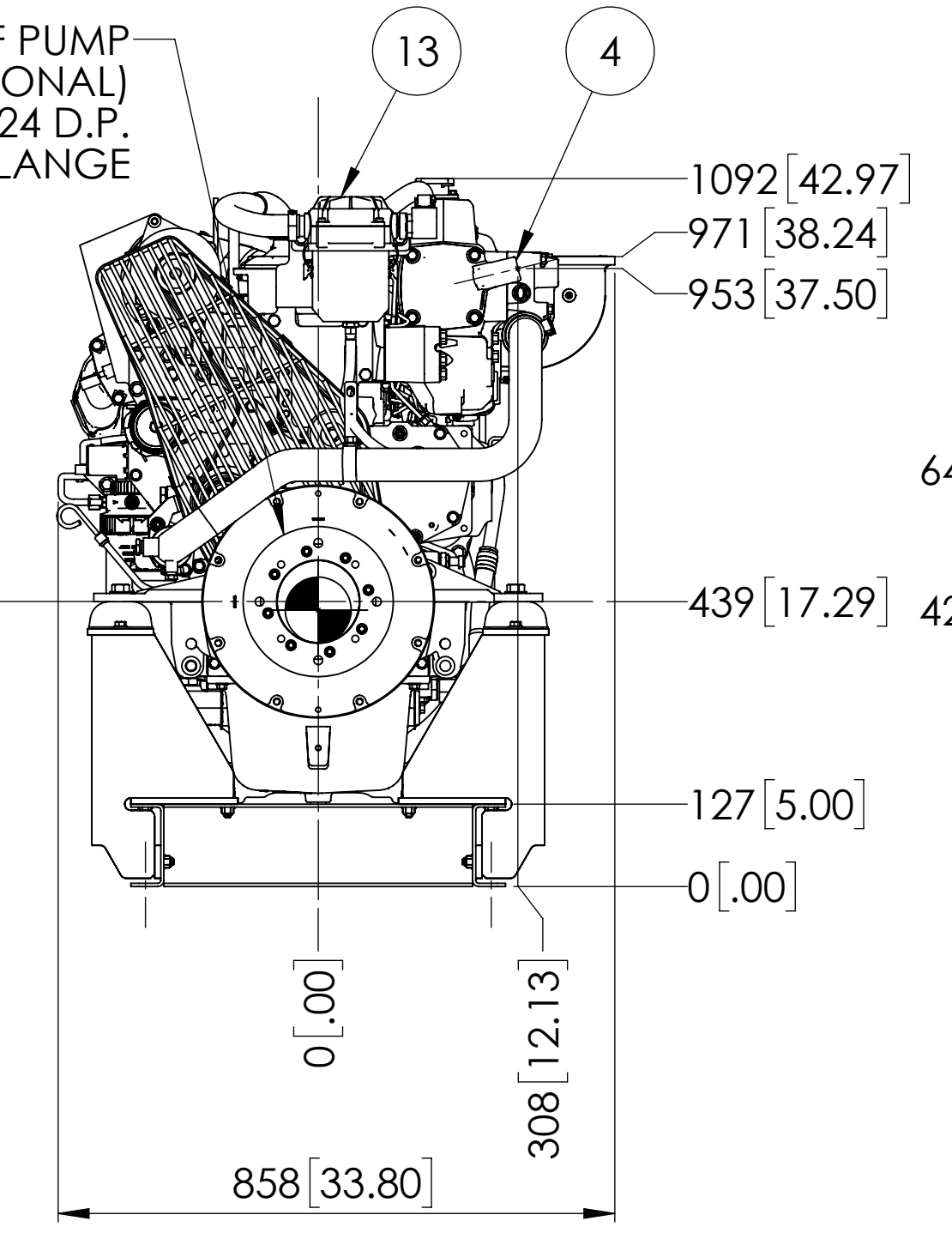
ITEM	DESCRIPTION
1	EXPANSION TANK
2	COOLANT FILL
3	COOLANT INLET $\phi$ 1.5 H.B.
4	COOLANT OUTLET $\phi$ 1.5 H.B.
5	FUEL SUPPLY $\phi$ 3/8 H.B.
6	FUEL RETURN $\phi$ 1/4 H.B.
7	CRANKCASE OIL DIPSTICK
8	CRANKCASE OIL FILLER
9	CRANKCASE OIL FILTER
10	ENGINE OIL DRAIN - M18x1.5
11	AIR INLET FILTER
12	OPTIONAL DRY EXHAUST ELBOW - SEE DETAIL
13	CLOSED CRANKCASE VENTILATION SYSTEM
14	ELECTRIC STARTER
15	PRIMARY FUEL FILTER
16	FINAL FUEL FILTER
17	ENGINE CONTROL UNIT
18	OPTIONAL PMG
19	EMERGENCY STOP SWITCH
20	GENSET CONTROL TOGGLE SWITCHES



OPTIONAL DRY EXHAUST ELBOW FLANGE DETAIL



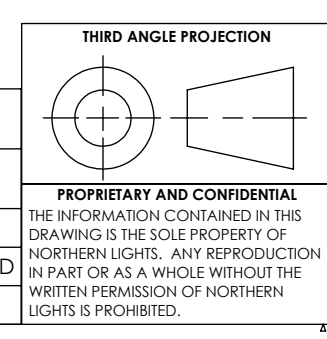
POWER TAKE-OFF PUMP MOUNTING FACE (OPTIONAL)  
"C" SPLINE 14T 12/24 D.P.  
2 AND 4 BOLT FLANGE



NOTE:  
1. FOR M99C13 WITH W/O OPTIONAL PTO, SEE DRAWING D-4693.

THE DIMENSIONS ON THIS DRAWING ARE SUBJECT TO CHANGE. PLEASE CONTACT NLI TO BE SURE YOU HAVE THE MOST CURRENT REVISION.

REV.	DESCRIPTION	DATE	BY	CHECKED
C	MOVED ENGINE TO ECU HARNESS KIT. ADDED E-STOP AND GENSET CONTROL SWITCHES. ECN 7311	4/29/2021	MG	DV
B	ADDED ENGINE TO ECU HARNESS KIT. CHANGED DIM.: NOW 1101 WAS 1092. CHANGED WEIGHT: NOW 2770 LB WAS 2760 LB. ECN 6799	6/11/2020	MG	LTP
A	UPDATED TO SHOW NEW BASE FRAME. ECN 3765.	2/10/2016	MG	TAH



UNLESS OTHERWISE SPECIFIED:	NAME	DATE
DIMENSIONS ARE IN MILLIMETERS	MG	08/06/13
TOLERANCES:	TAH	09/03/14
ANGULAR: MACH: 0.5° BEND $\pm$ 1.0°		
X. $\pm$ 3		
X.X $\pm$ 2		
INTERPRET GEOMETRIC TOLERANCING PER: ASME Y14.5M		
MATERIAL:		
FINISH:		
DO NOT SCALE		

**NORTHERN LIGHTS**  
4420 14th AVE. N.W.  
Seattle, WA 98107  
(206) 789-3880  
www.northern-lights.com

TITLE: **INSTALLATION DIMENSIONS**  
M99C13.2S K.C. WITH OPTIONAL PTO

SIZE: **D** PART NO. DWG. NO. **D-4775** REV **C**

SCALE: 1:10 WEIGHT: SHEET 1 OF 1