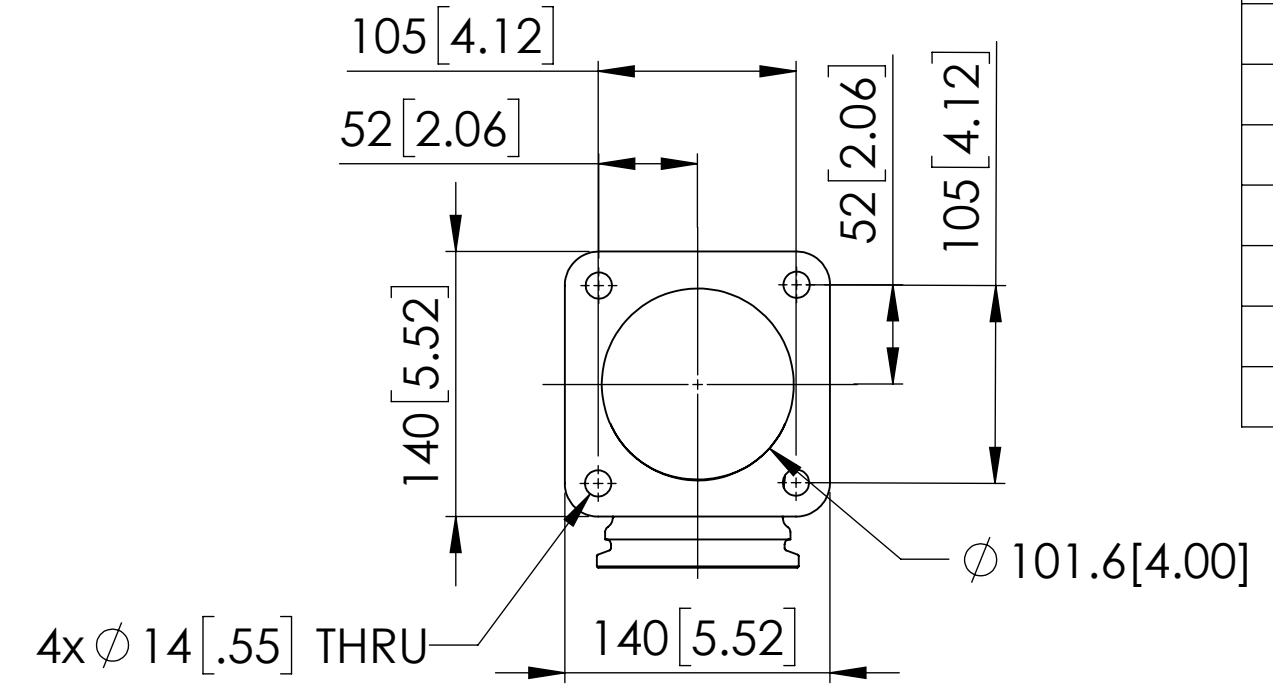
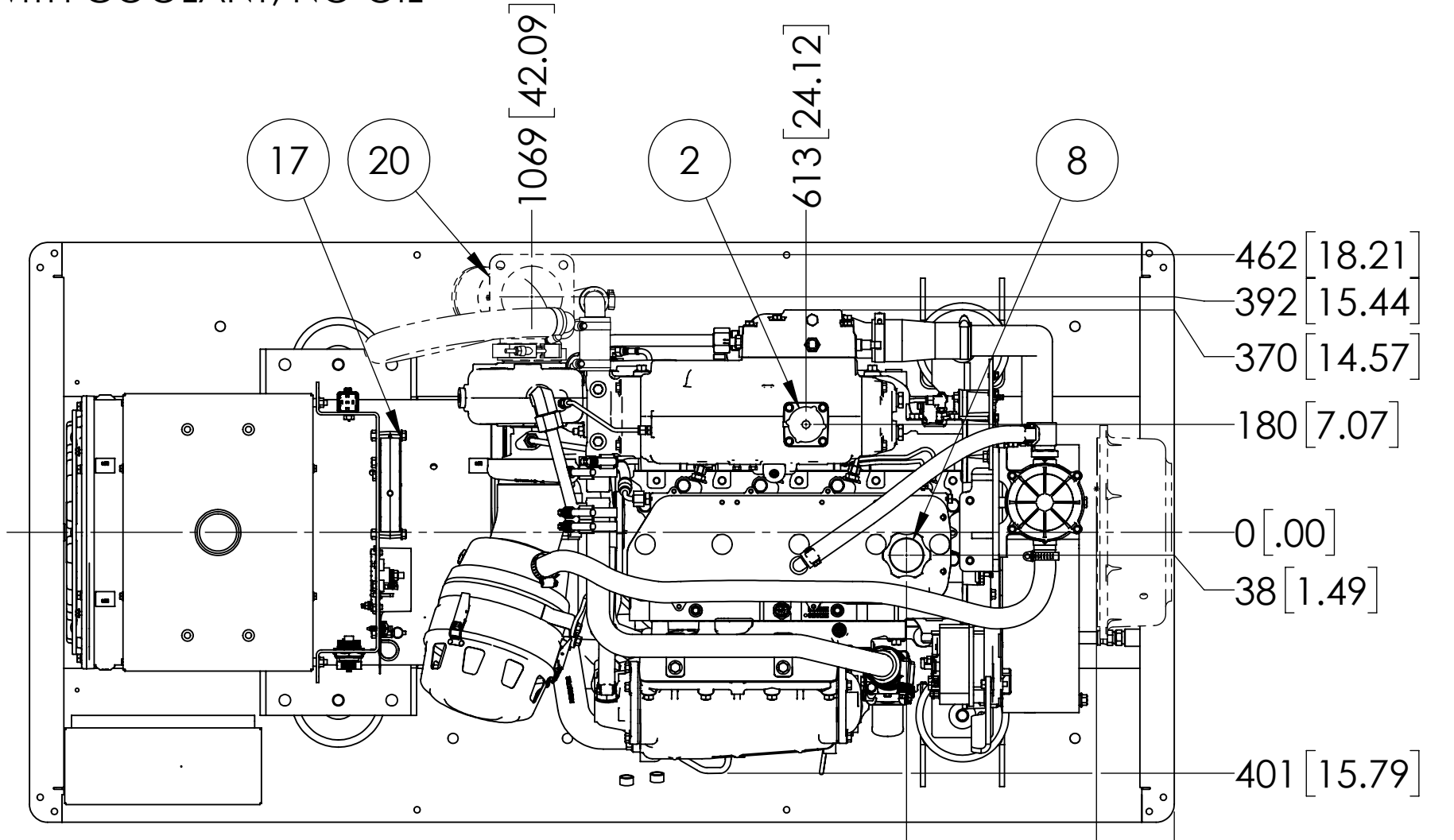


MODELS	APPROX. WT. lbs [kg]
M80A13.11L - 80kW 1800 RPM 60Hz 3 $\phi$	2633 [1194]*
M99A13.11L - 99kW 1800 RPM 60Hz 3 $\phi$	2633 [1194]*

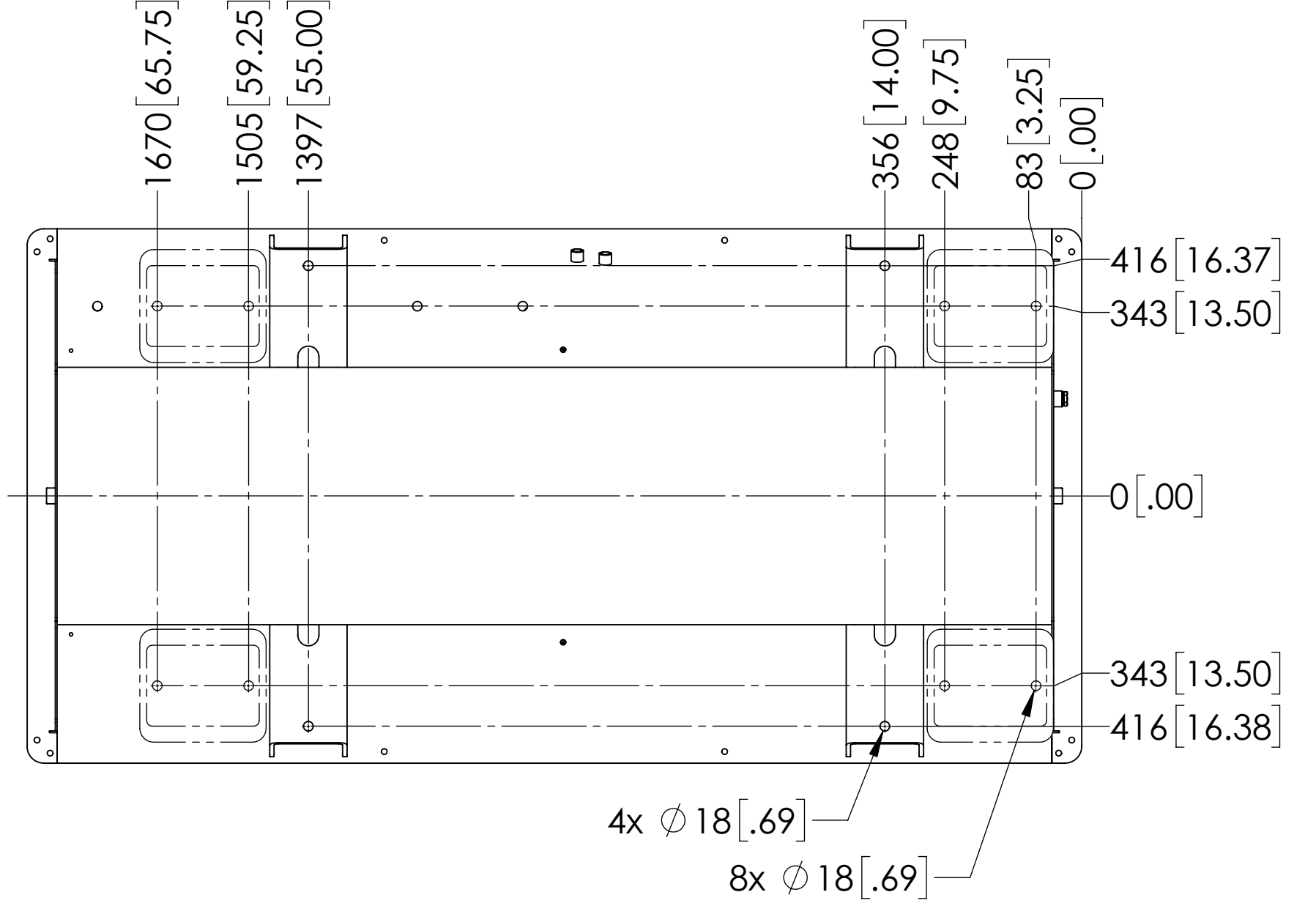
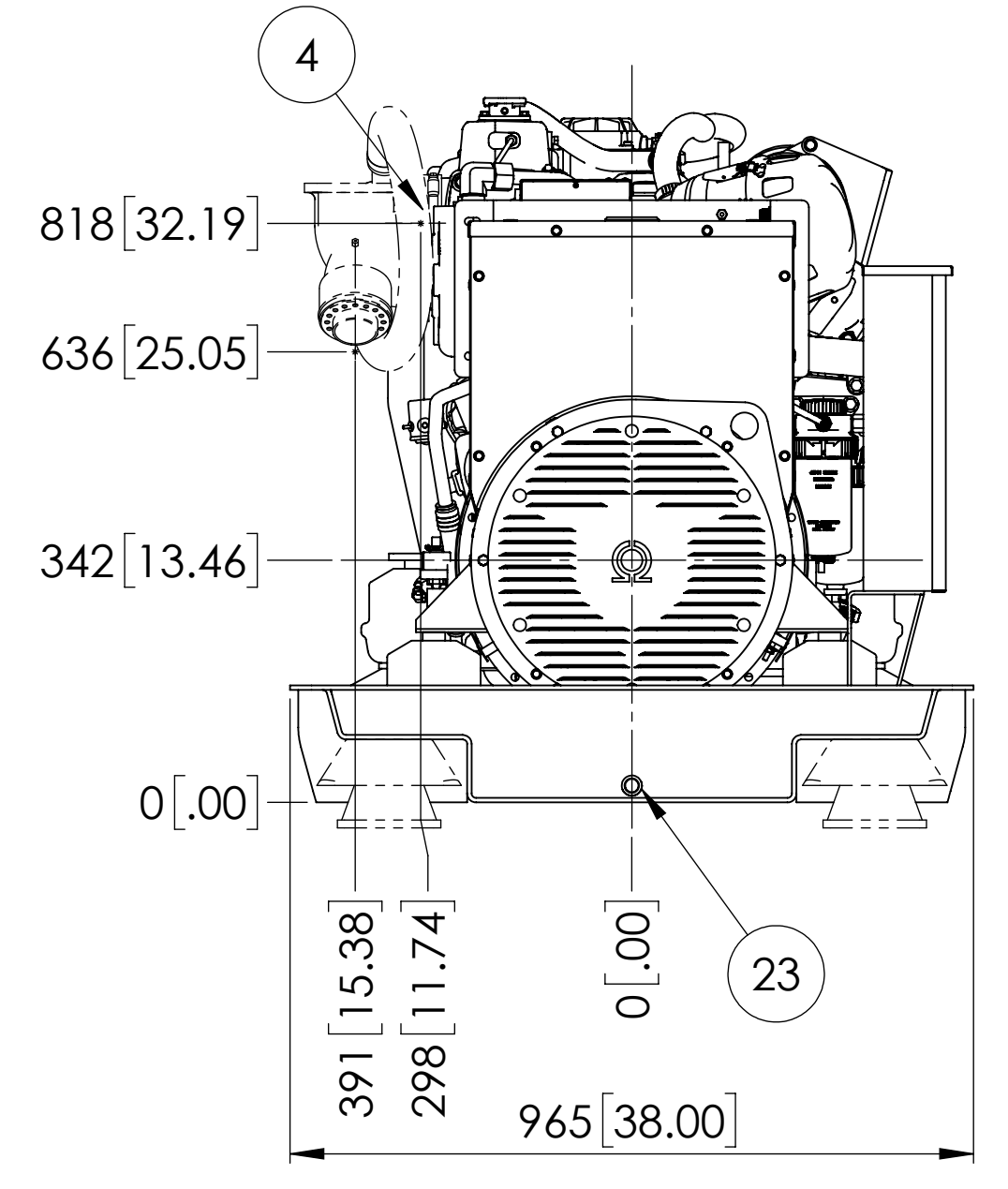
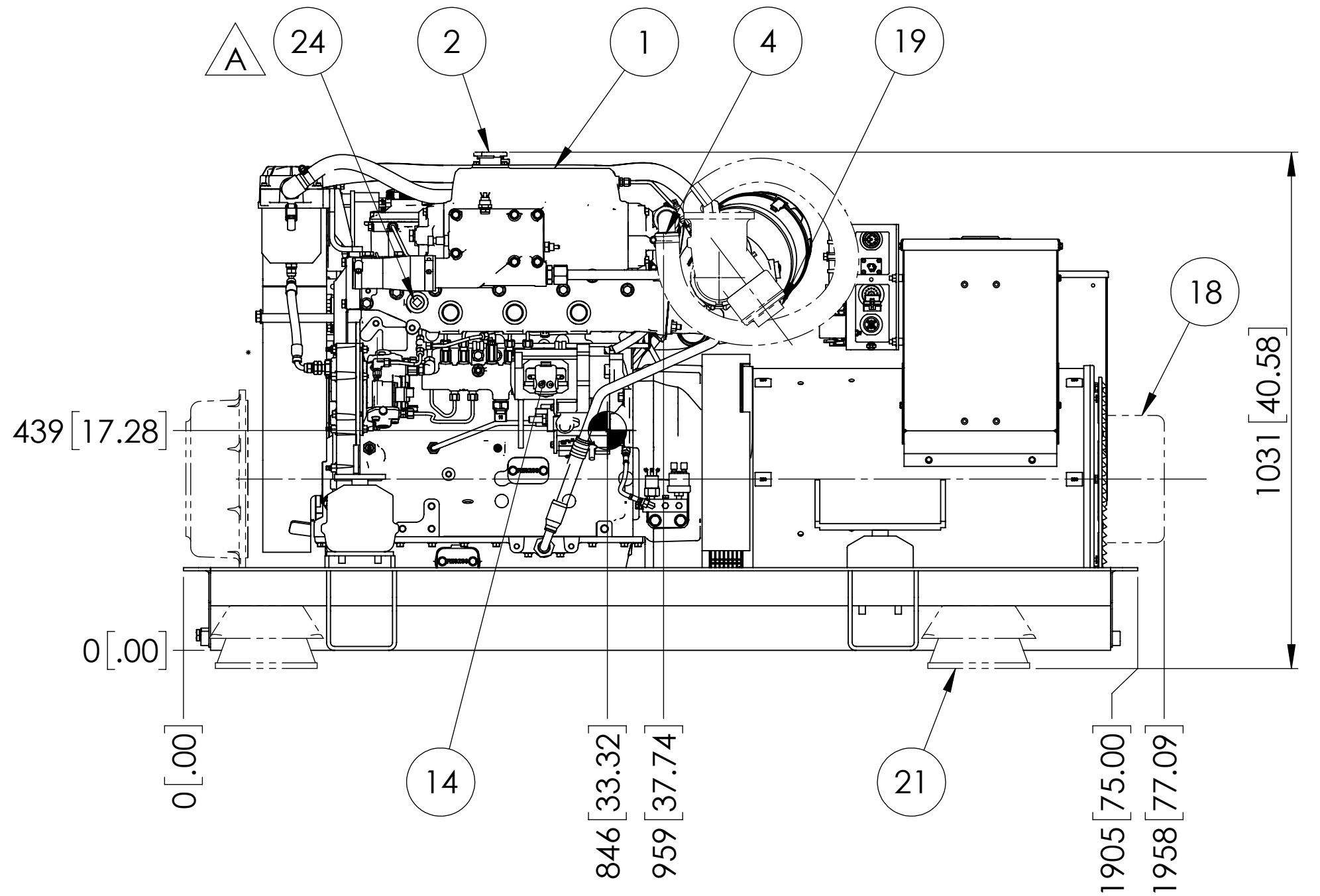
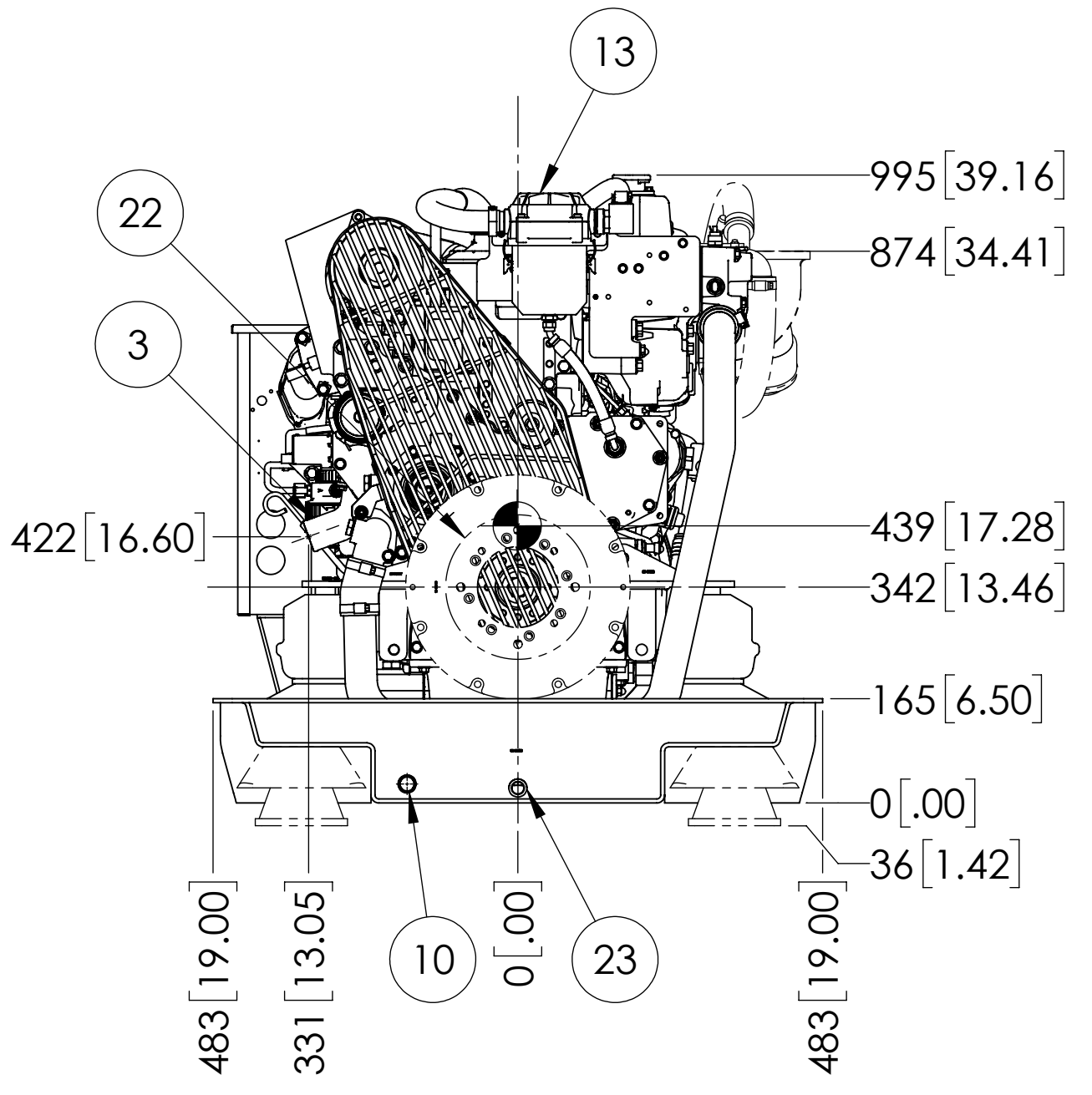
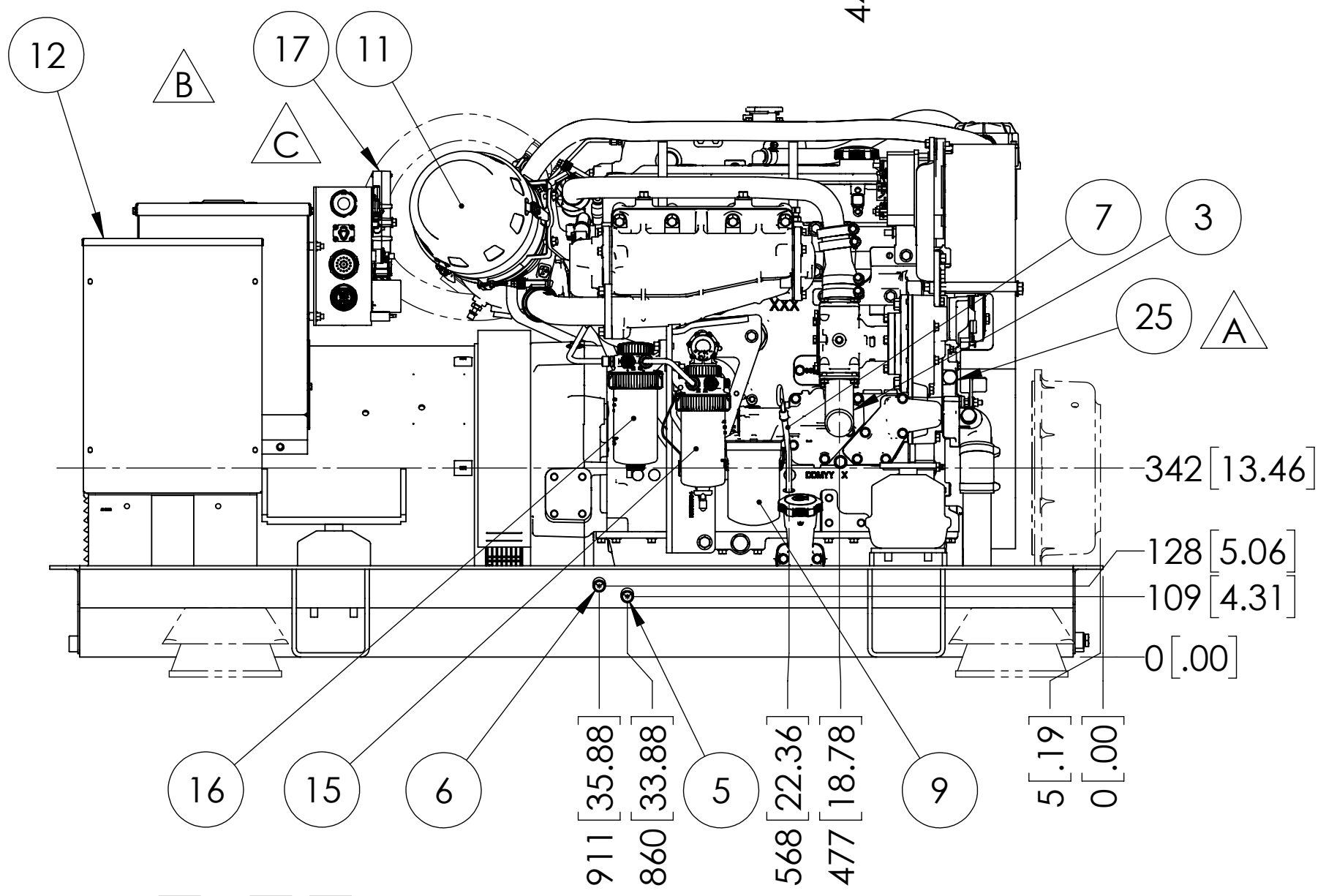
\*WITH COOLANT, NO OIL

$\triangle$ B



OPTIONAL DRY EXHAUST ELBOW FLANGE DETAIL

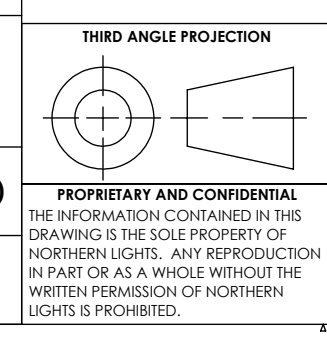
ITEM	DESCRIPTION		
14	ELECTRIC STARTER		
15	PRIMARY FUEL FILTER		
16	FINAL FUEL FILTER		
17	ENGINE CONTROL UNIT		
18	OPTIONAL PMG		
19	OPTIONAL WET EXHAUST ELBOW - $\phi$ 4.0 H.B.		
20	OPTIONAL DRY EXHAUST ELBOW - SEE DETAIL		
21	OPTIONAL COMPOUND MOUNTS		
22	OPTIONAL PTO - "C" SPLINE 14T 12/24 D.P. 2 AND 4 BOLT FLANGE		
23	BASE PAN DRAIN - 1/2 NPT		
24	HEATER SUPPLY - 3/4 - 14 NPTF		
25	HEATER RETURN - M18 X 1.5 O-RING PORT		
1	EXPANSION TANK		
2	COOLANT FILL		
3	SEAWATER INLET $\phi$ 2.0 H.B.		
4	SEAWATER OUTLET $\phi$ 1.5 H.B. (DRY EXHAUST)		
5	FUEL SUPPLY $\phi$ 3/8 NPT		
6	FUEL RETURN $\phi$ 3/8 NPT		
7	CRANKCASE OIL DIPSTICK		
8	CRANKCASE OIL FILLER		
9	CRANKCASE OIL FILTER		
10	ENGINE OIL DRAIN - 1/2 NPT		
11	AIR INLET FILTER		
12	D.C. JUNCTION BOX		
13	CLOSED CRANKCASE VENTILATION SYSTEM		



REV.	DESCRIPTION	DATE	BY	CHECKED
C	MOVED ENGINE TO ECU HARNESS BRACKET TO FRONT OF GENERATOR J-BOX. ECN 7332	5/11/2021	MG	DV
B	ADDED ENGINE TO ECU HARNESS BRACKET. ADDED 99 kW POWER RATING. ECN 6796	6/10/2020	MG	LTP
A	ADDED HEATER SUPPLY AND RETURN INSTALLATION POINTS. ECN 3514	9/10/2015	MG	TAH

REVISIONS

THE DIMENSIONS ON THIS DRAWING ARE SUBJECT TO CHANGE. PLEASE CONTACT NLI TO BE SURE YOU HAVE THE MOST CURRENT REVISION.



UNLESS OTHERWISE SPECIFIED:		NAME	DATE
DIMENSIONS ARE IN MILLIMETERS		MG	08/06/13
TOLERANCES:		CHECKED	TAH
ANGULAR: MACH: 0.5° BEND ± 1.0°		ENG APPR.	
X. ± 3		MFG APPR.	
X.X ± 2		G.A.	
INTERPRET GEOMETRIC TOLERANCING PER: ASME Y14.5M		COMMENTS:	
MATERIAL:			
FINISH:			
DO NOT SCALE			

**NORTHERN LIGHTS**  
 4420 14th AVE. N.W.  
 Seattle, WA 98107  
 (206) 789-3880  
 www.northern-lights.com

TITLE: **INSTALLATION DIMENSIONS**  
 M99/M80A13.11L H.E.

SIZE: **D** PART NO. DWG. NO. **D-4799** REV **C**

SCALE: 1:10 WEIGHT: SHEET 1 OF 1