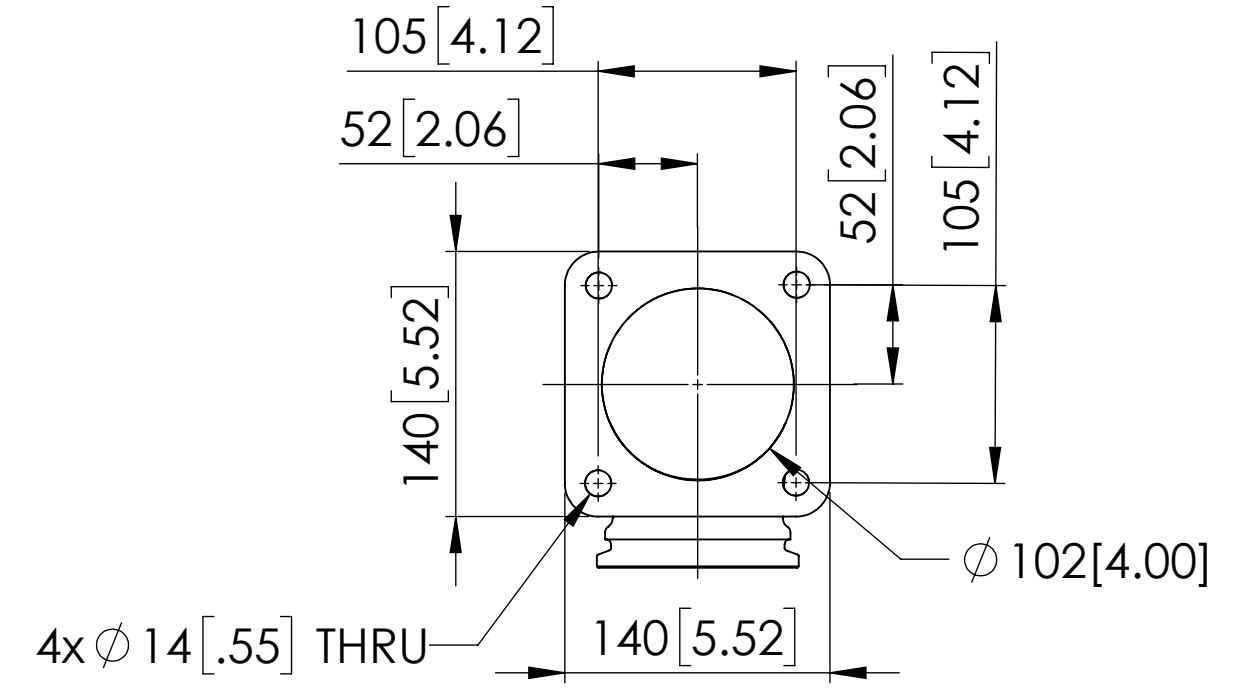
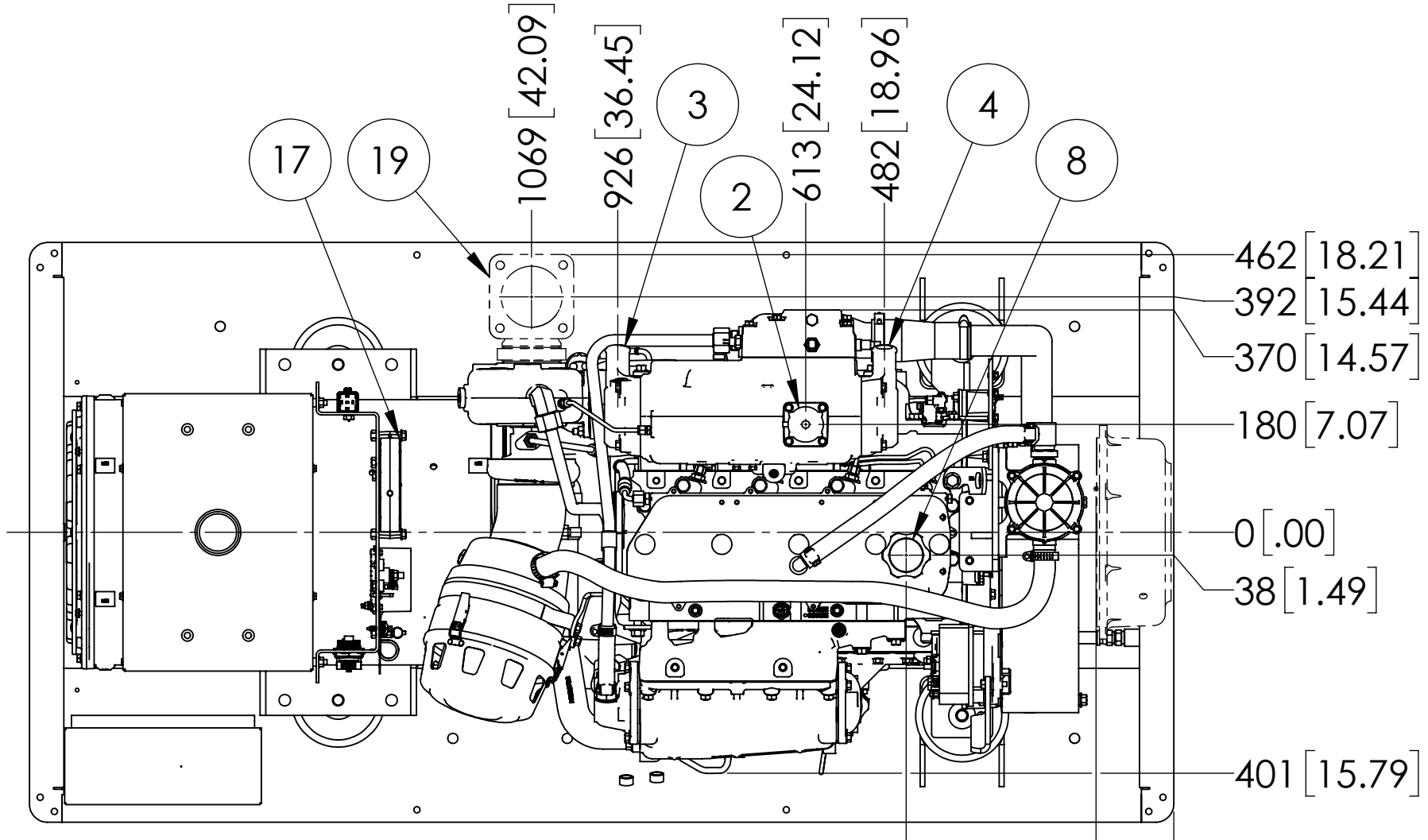
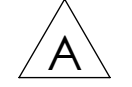


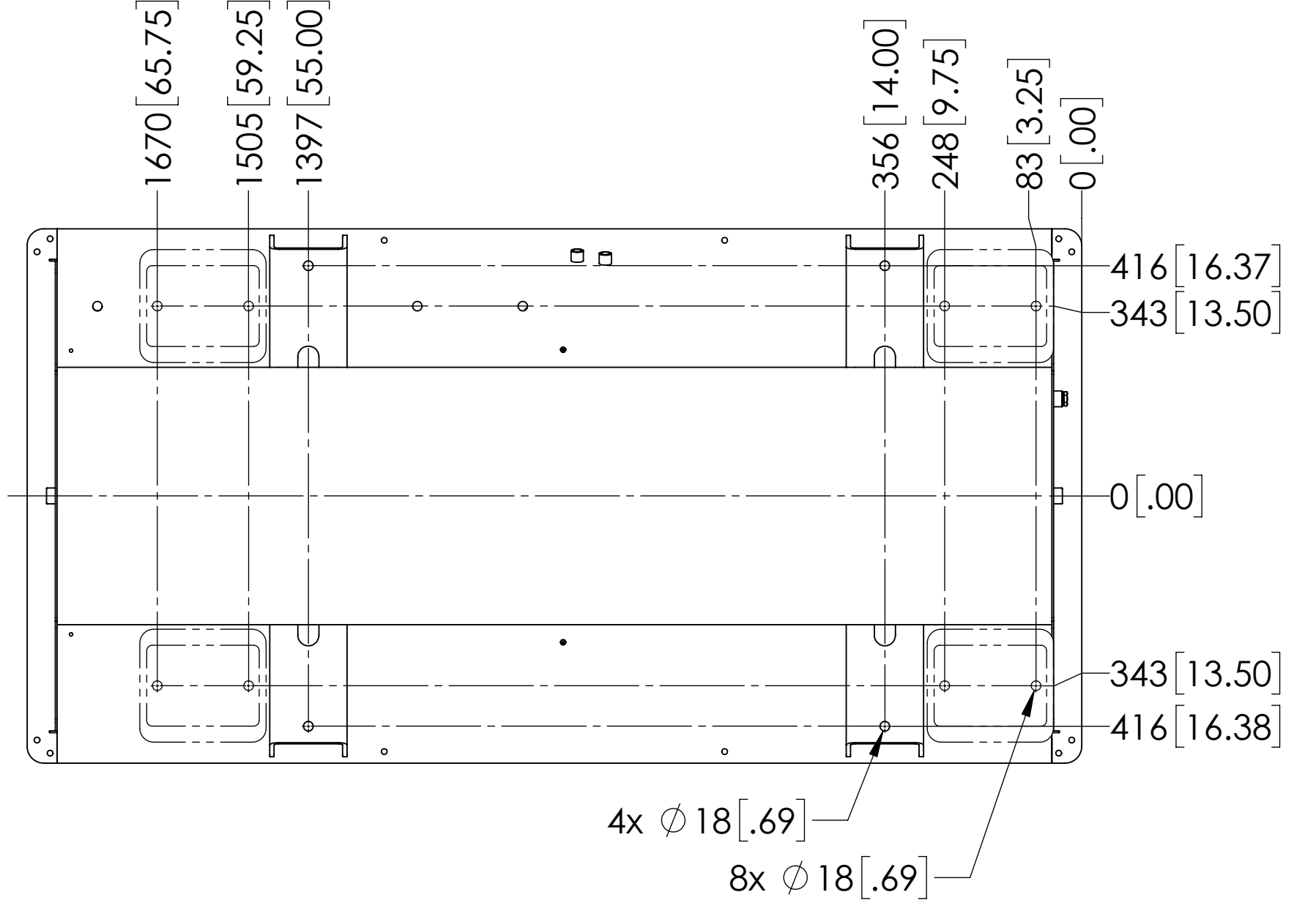
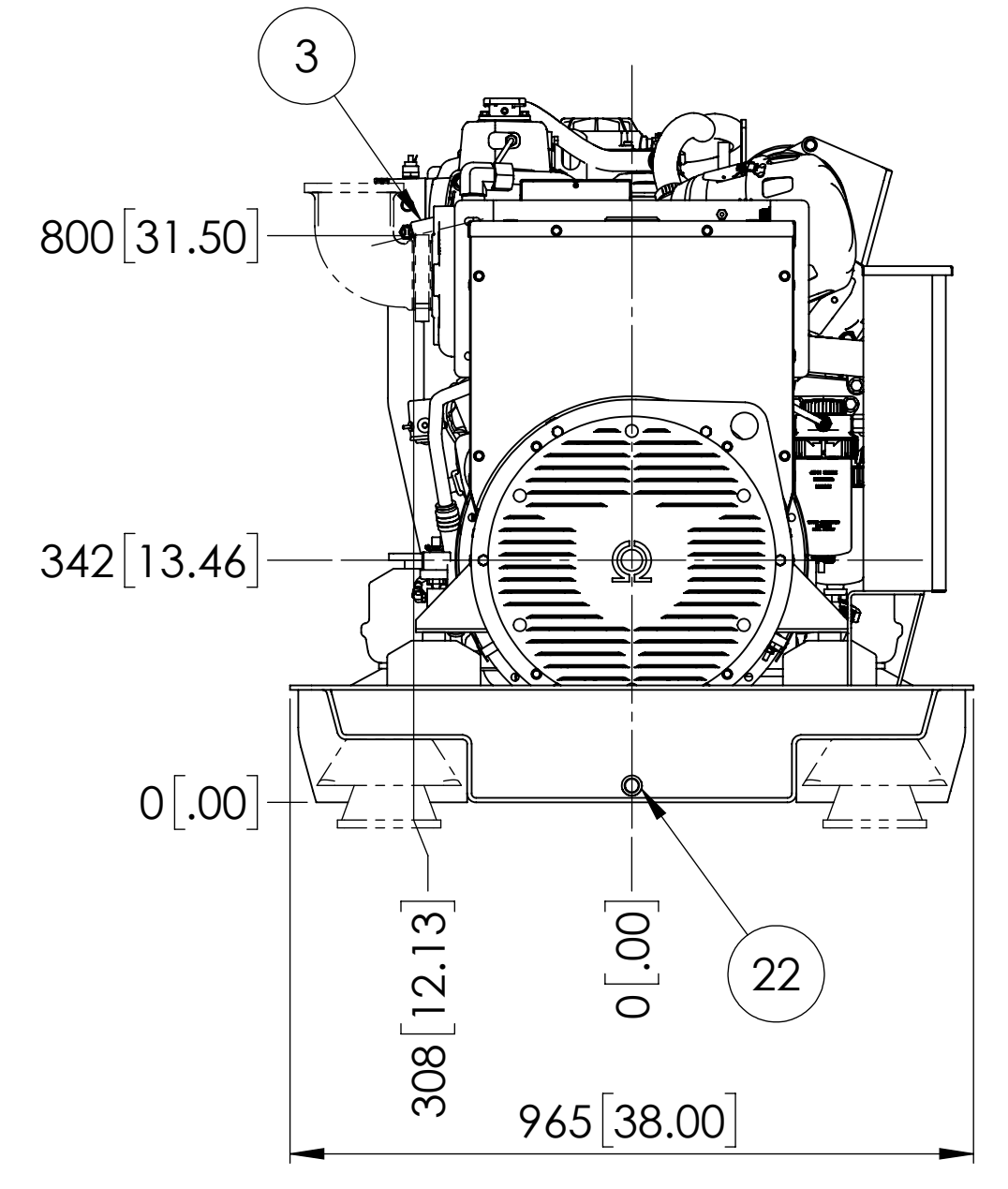
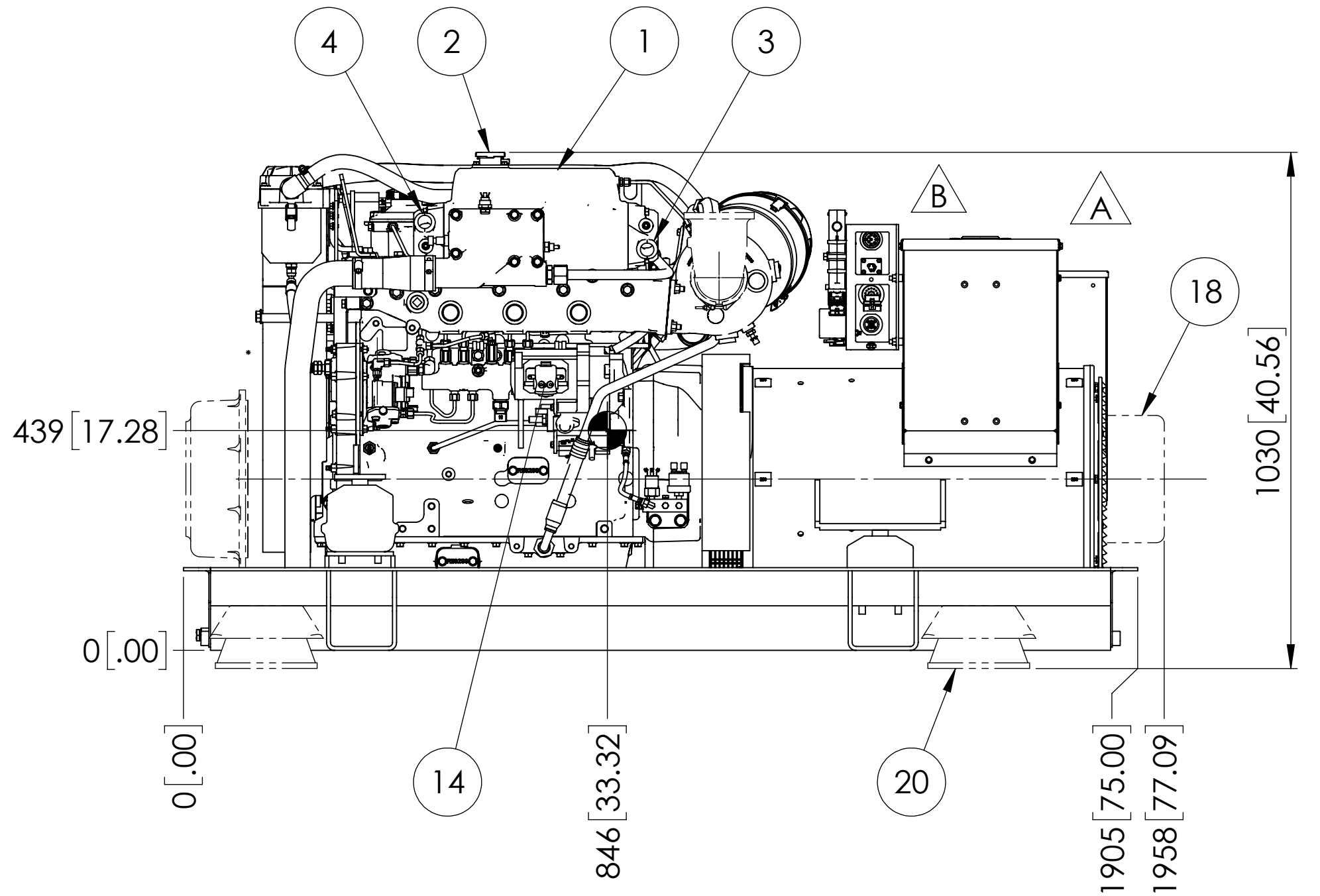
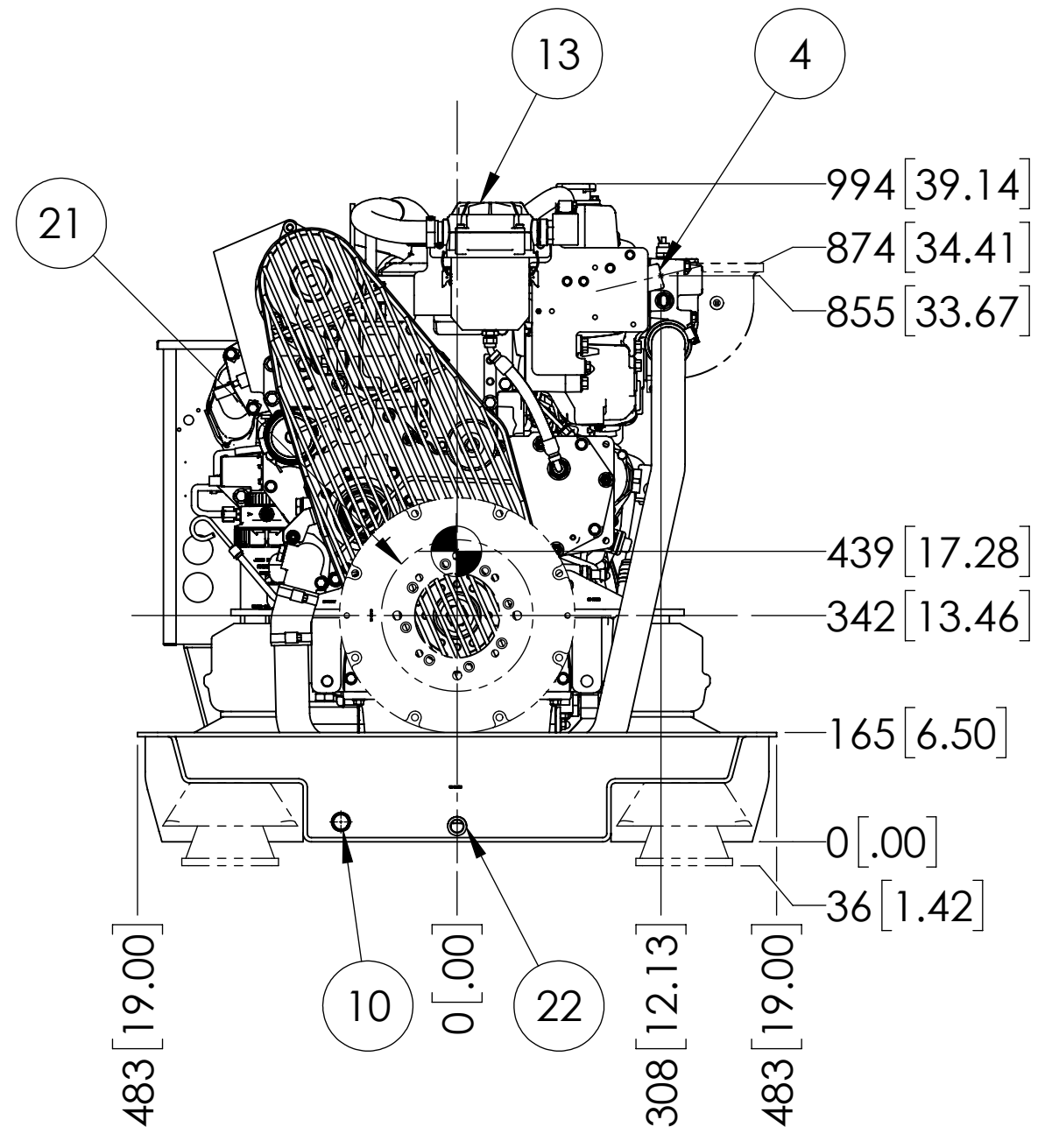
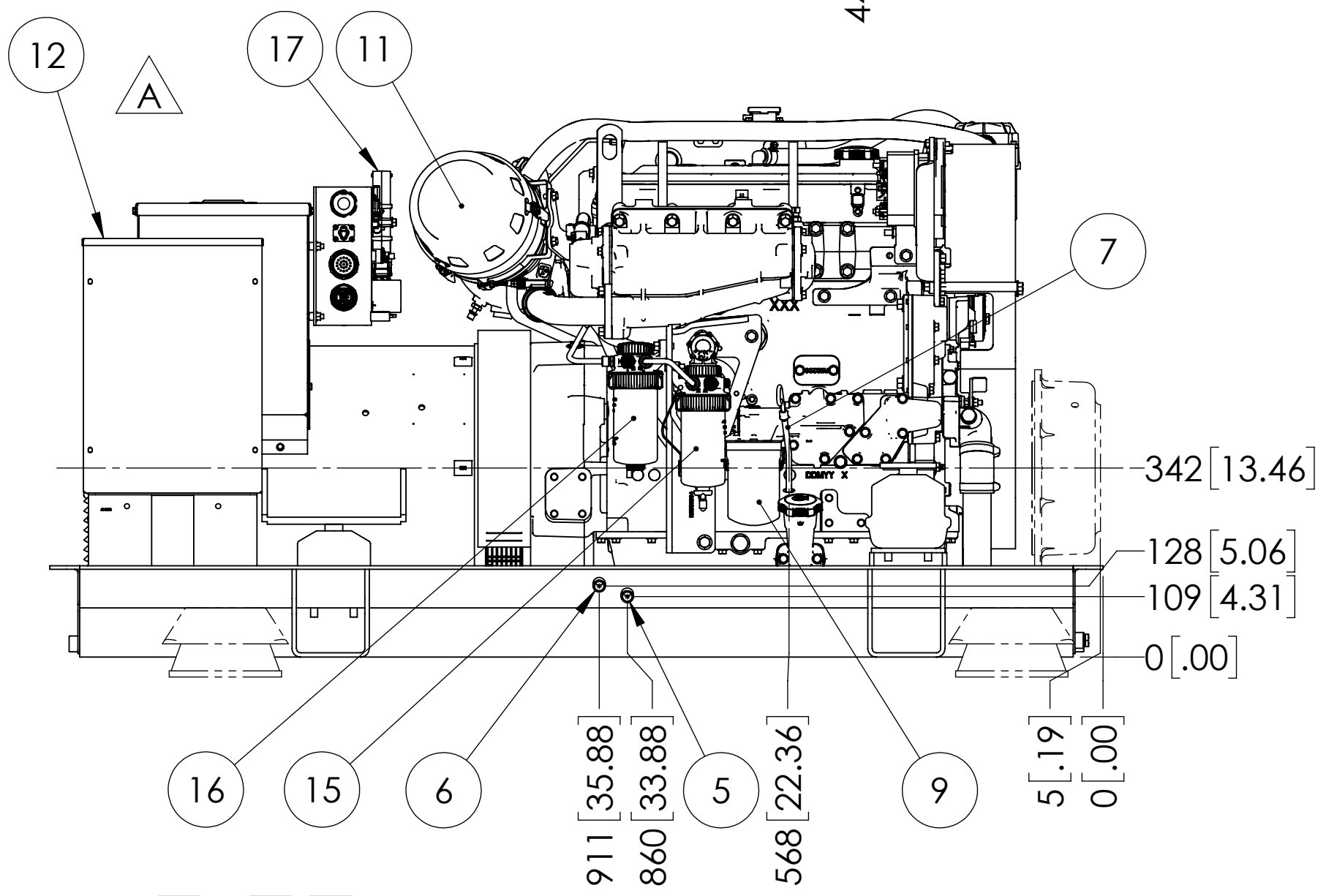
MODELS	APPROX. WT. lbs [kg]
M80A13.21L - 80kW 1800 RPM 60Hz 3 ϕ	2623 [1190]*

*WITH COOLANT, NO OIL



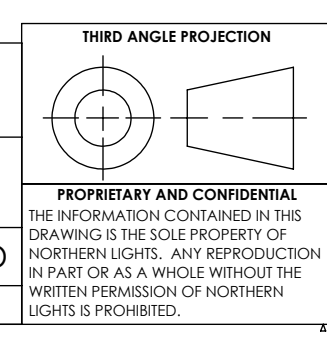
OPTIONAL DRY EXHAUST ELBOW FLANGE DETAIL

ITEM	DESCRIPTION
1	EXPANSION TANK
2	COOLANT FILL
3	SUPPLY FROM KEEL COOLER - $\phi 1.5$ H.B.
4	RETURN TO KEEL COOLER - $\phi 1.5$ H.B.
5	FUEL SUPPLY - $\phi 3/8$ NPT
6	FUEL RETURN - $\phi 3/8$ NPT
7	CRANKCASE OIL DIPSTICK
8	CRANKCASE OIL FILLER
9	CRANKCASE OIL FILTER
10	ENGINE OIL DRAIN - 1/2 NPT
11	AIR INLET FILTER
12	D.C. JUNCTION BOX
13	CLOSED CRANKCASE VENTILATION SYSTEM
14	ELECTRIC STARTER
15	PRIMARY FUEL FILTER
16	FINAL FUEL FILTER
17	ENGINE CONTROL UNIT
18	OPTIONAL PMG
19	OPTIONAL DRY EXHAUST ELBOW - SEE DETAIL
20	OPTIONAL COMPOUND MOUNTS
21	OPTIONAL PTO - "C" SPLINE 14T 12/24 D.P. 2 AND 4 BOLT FLANGE
22	BASE PAN DRAIN - 1/2 NPT



THE DIMENSIONS ON THIS DRAWING ARE SUBJECT TO CHANGE. PLEASE CONTACT NLI TO BE SURE YOU HAVE THE MOST CURRENT REVISION.

REV.	DESCRIPTION	DATE	BY	CHECKED
B	MOVED ENGINE TO ECU HARNESS BRACKET TO FRONT OF GENERATOR J-BOX. ECN 7337	5/11/2021	MG	DV
A	ADDED ENGINE TO ECU HARNESS KIT. CHANGED WEIGHT TO 2623 LB WAS 2613 LB. ECN 6806	6/12/2020	MG	LTP



UNLESS OTHERWISE SPECIFIED: DIMENSIONS ARE IN MILLIMETERS TOLERANCES: ANGULAR: MACH: 0.5° BEND $\pm 1.0^\circ$ X. ± 3 X.X ± 2	NAME: MG DATE: 08/06/13
INTERPRET GEOMETRIC TOLERANCING PER: ASME Y14.5M	CHECKED: TAH ENG APPR: MEG APPR:
MATERIAL: FINISH:	Q.A. COMMENTS:
DO NOT SCALE	

NORTHERN LIGHTS
4420 14th AVE. N.W.
Seattle, WA 98107
(206) 789-3880
www.northern-lights.com

TITLE: **INSTALLATION DIMENSIONS**
M80A13.21L K.C.

SIZE: **D** PART NO.: DWG. NO.: **D-4800** REV: **B**

SCALE: 1:10 WEIGHT: SHEET 1 OF 1

D-4800