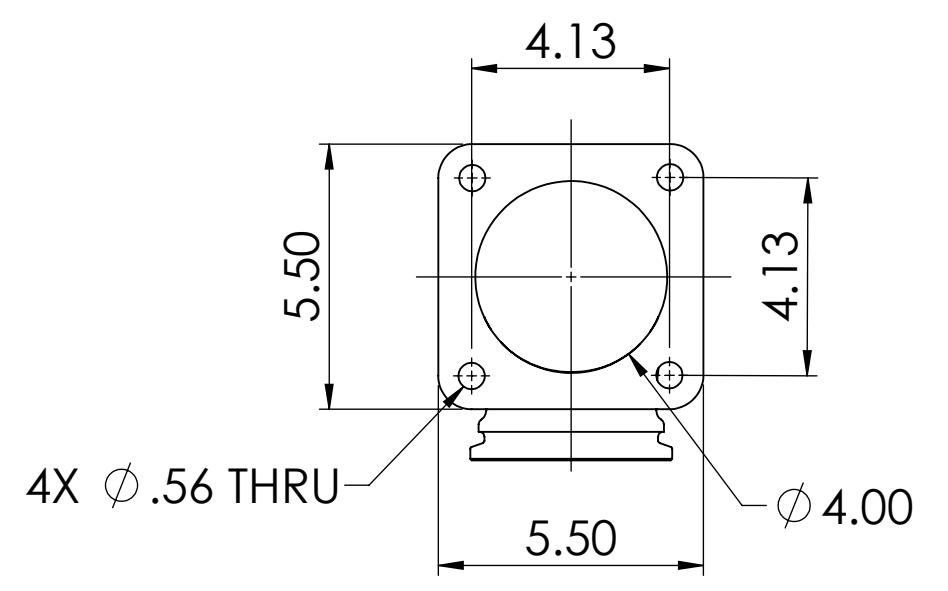
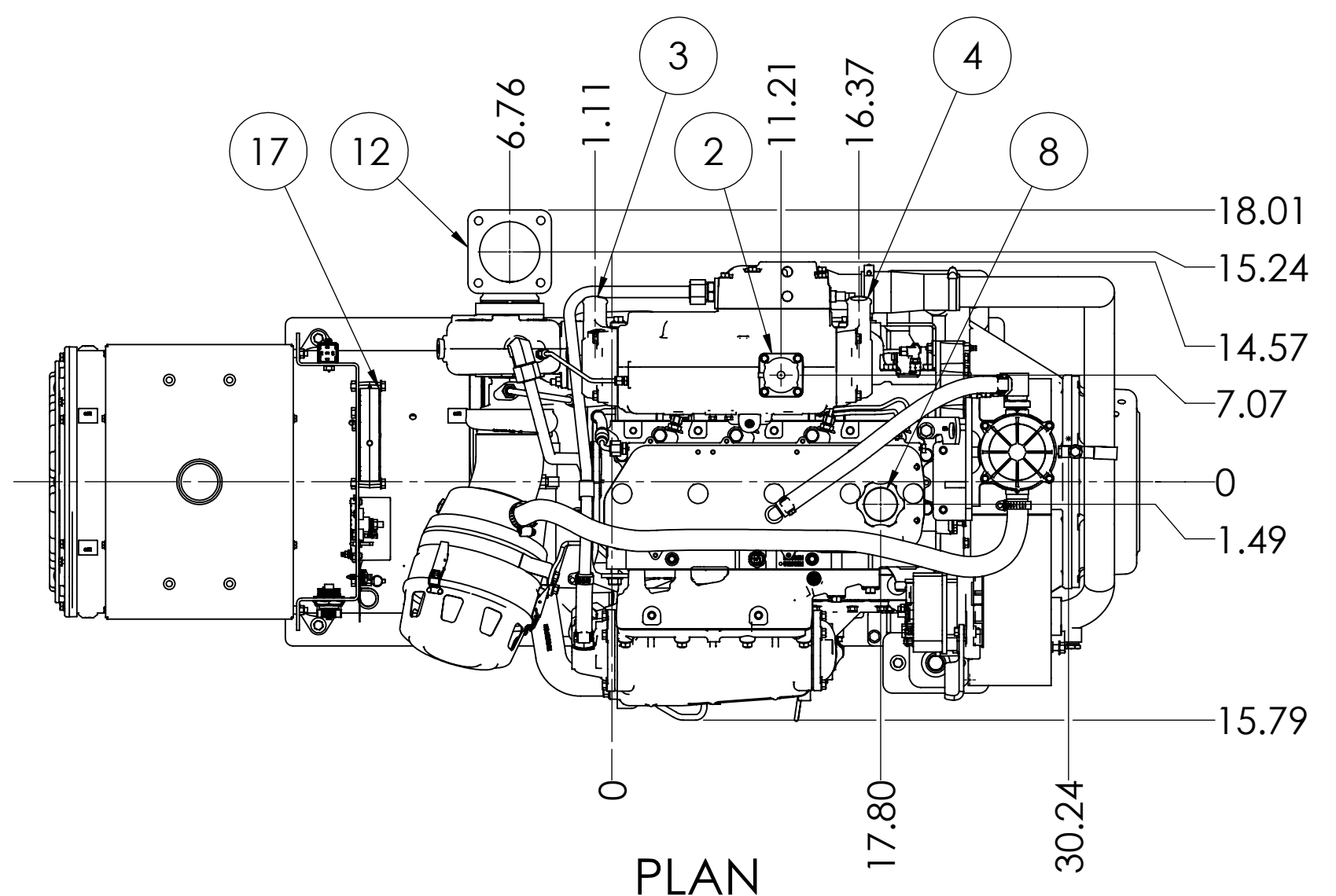


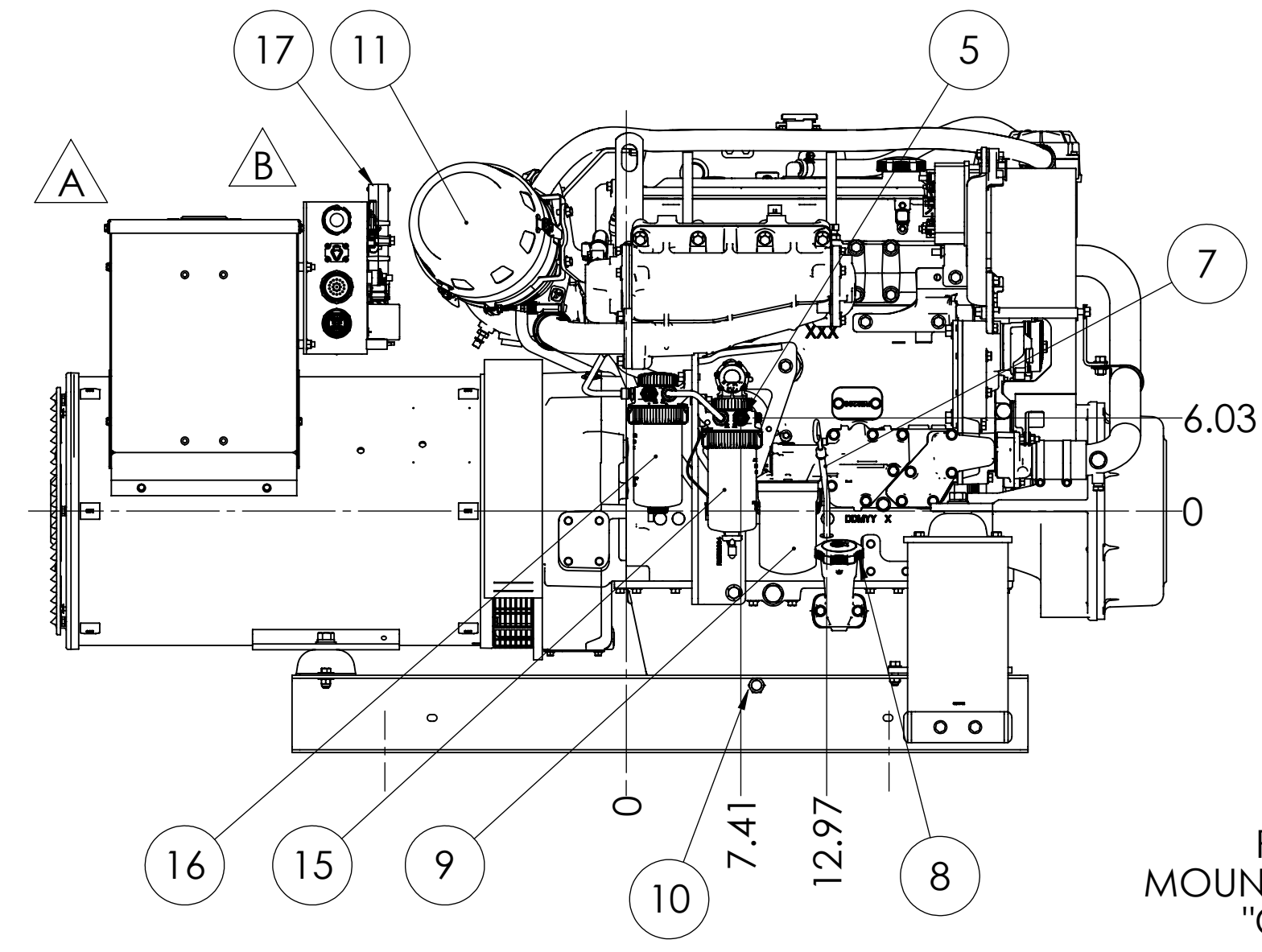
| | |
|---------------------------------------|----------------------|
| MODELS | APPROX. WT. lbs [kg] |
| M99C13.21 99kW 1800 RPM 60Hz 3 ϕ | 2540 [1152] |



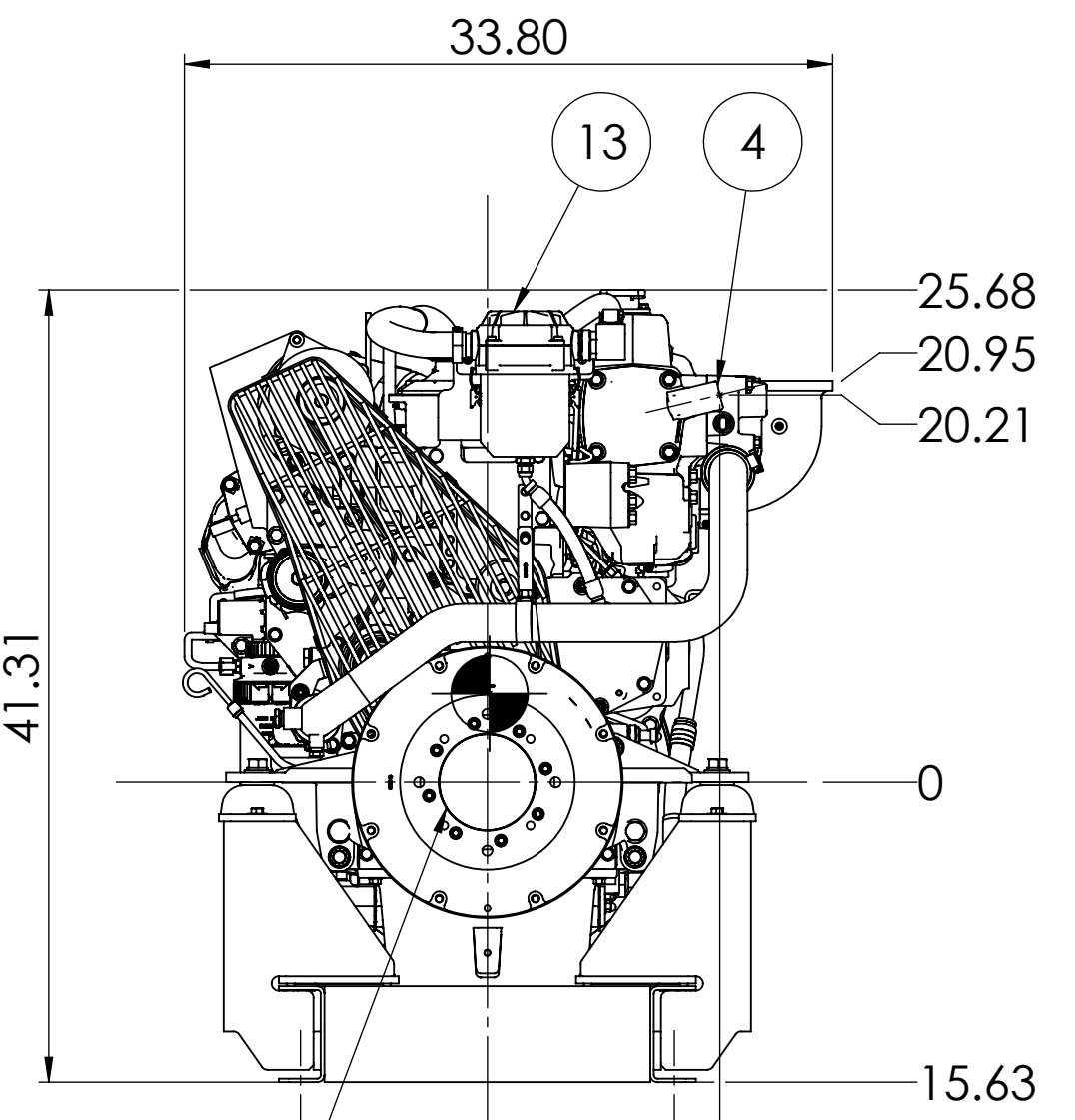
| ITEM | DESCRIPTION |
|------|---|
| 1 | EXPANSION TANK |
| 2 | COOLANT FILL |
| 3 | COOLANT INLET ϕ 1.5 H.B. |
| 4 | COOLANT OUTLET ϕ 1.5 H.B. |
| 5 | FUEL SUPPLY ϕ 3/8 H.B. |
| 6 | FUEL RETURN ϕ 1/4 H.B. |
| 7 | CRANKCASE OIL DIPSTICK |
| 8 | CRANKCASE OIL FILLER |
| 9 | CRANKCASE OIL FILTER |
| 10 | ENGINE OIL DRAIN - M18x1.5 |
| 11 | AIR INLET FILTER |
| 12 | OPTIONAL DRY EXHAUST ELBOW - SEE DETAIL |
| 13 | CLOSED CRANKCASE VENTILATION SYSTEM |
| 14 | ELECTRIC STARTER |
| 15 | PRIMARY FUEL FILTER |
| 16 | FINAL FUEL FILTER |
| 17 | ENGINE CONTROL UNIT |
| 18 | OPTIONAL PMG |



OPTIONAL DRY EXHAUST ELBOW FLANGE DETAIL

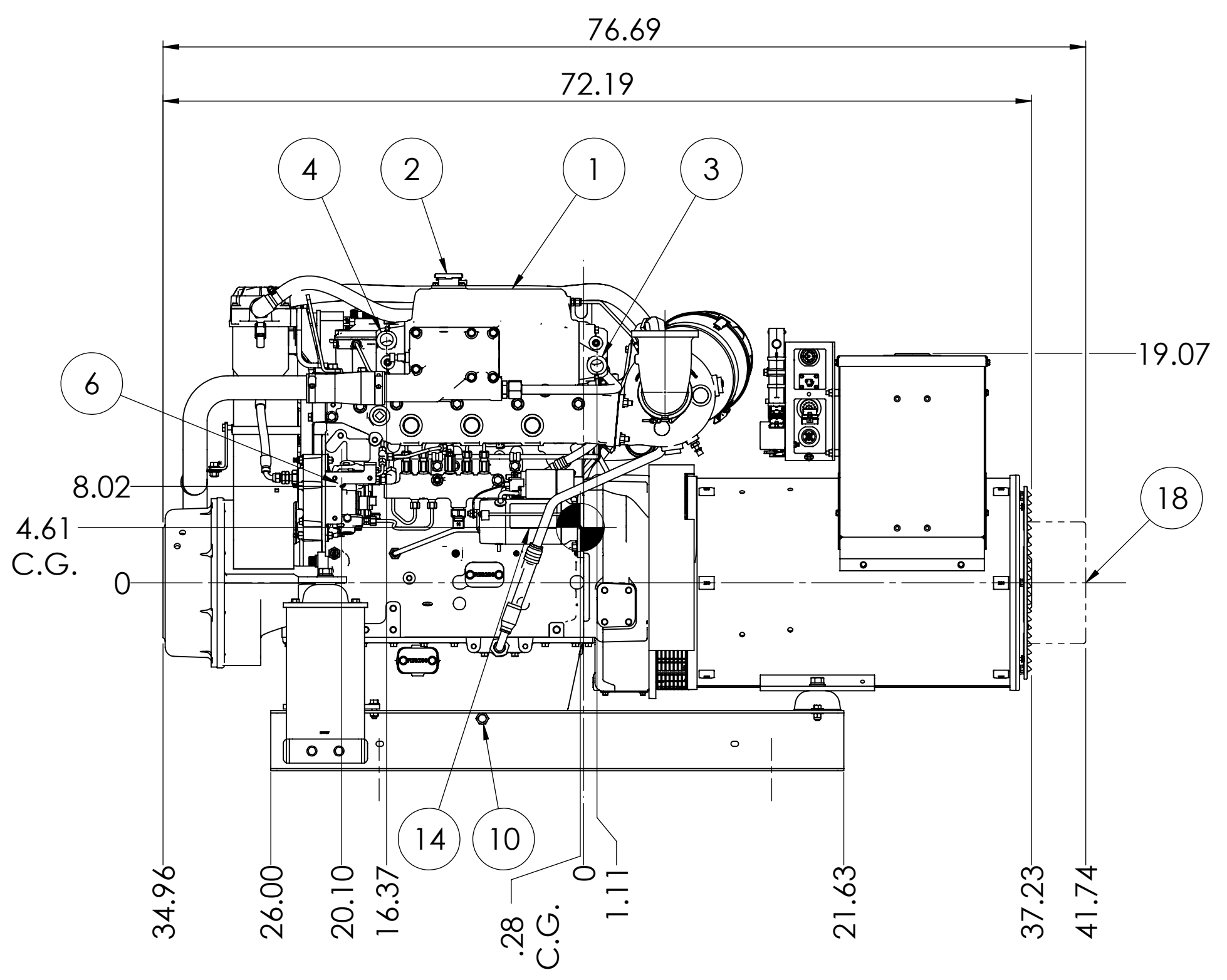


SERVICE SIDE

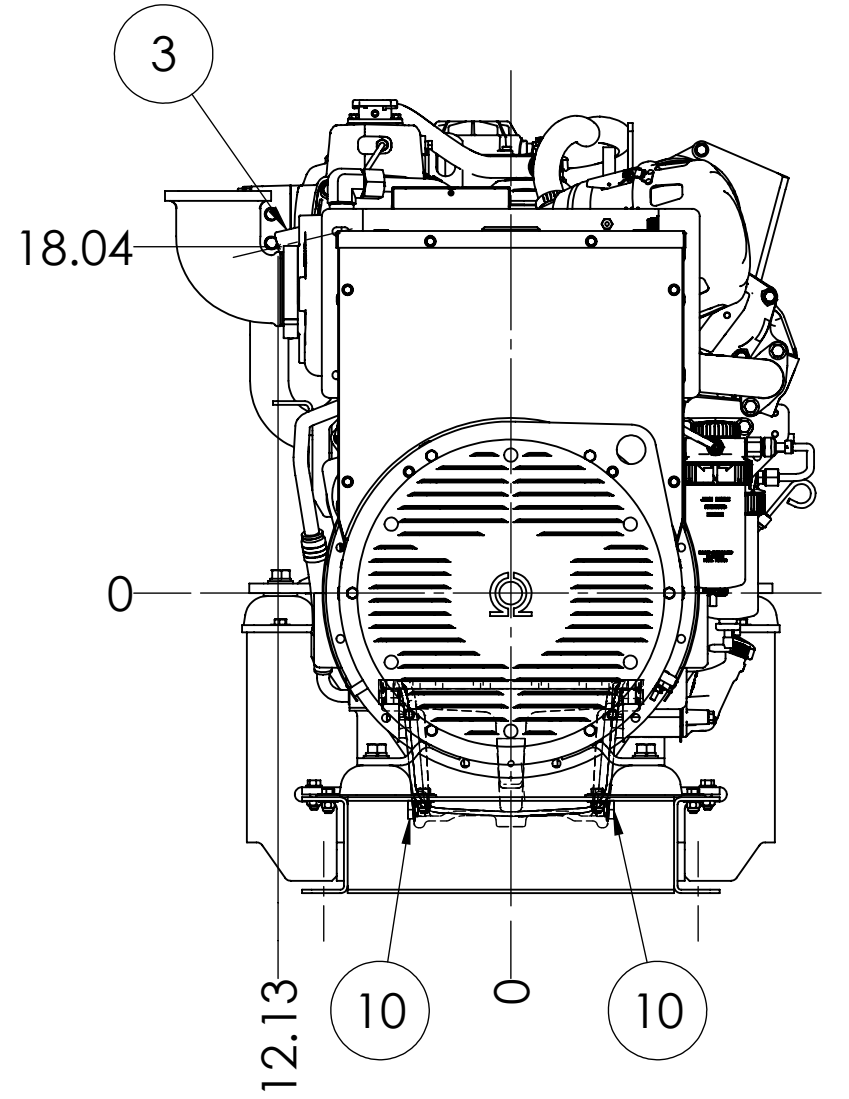


FRONT

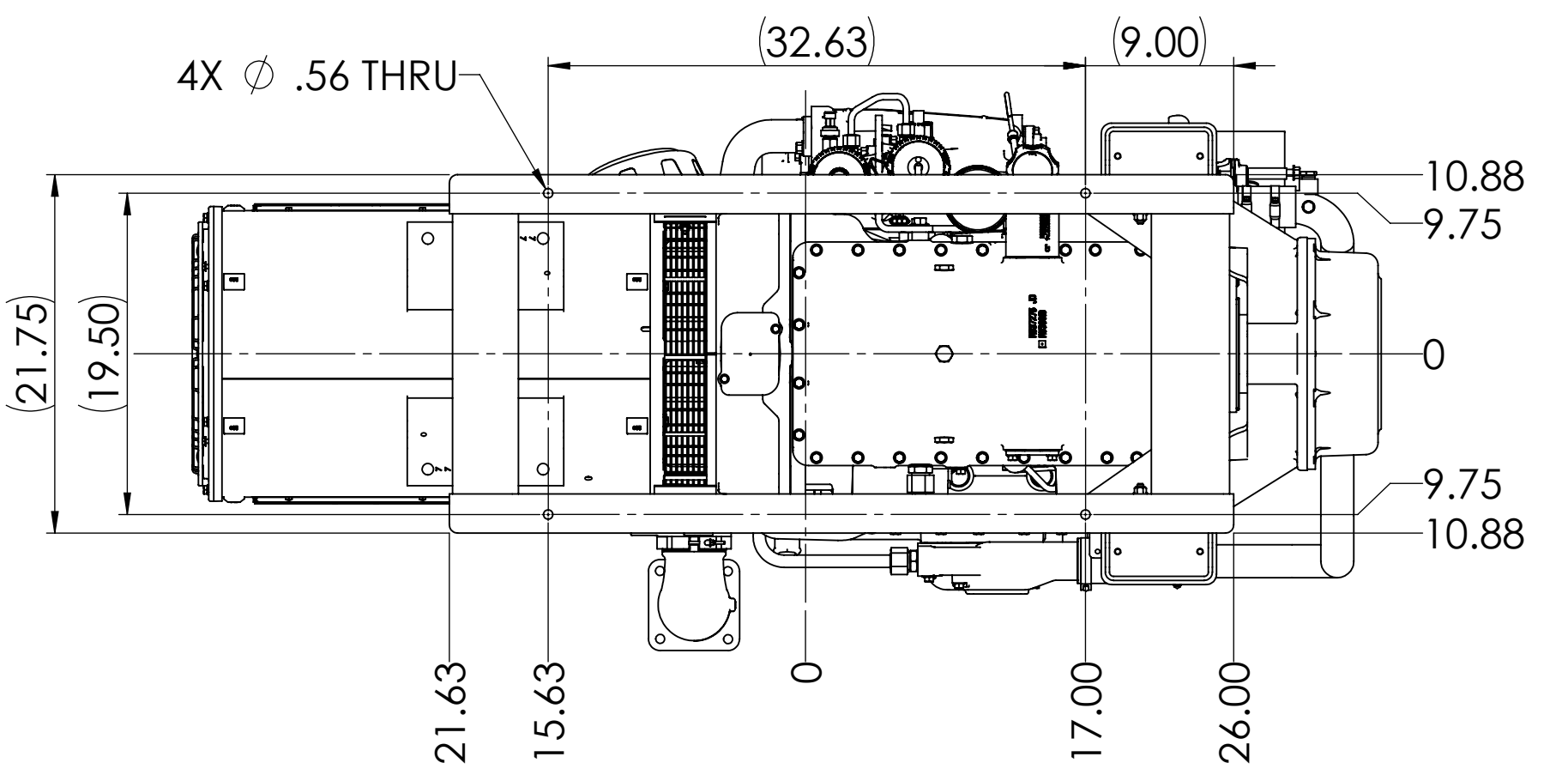
POWER TAKE-OFF PUMP MOUNTING FACE (OPTIONAL)
"C" SPLINE 14T 12/24 D.P.
2 AND 4 BOLT FLANGE



NON-SERVICE SIDE



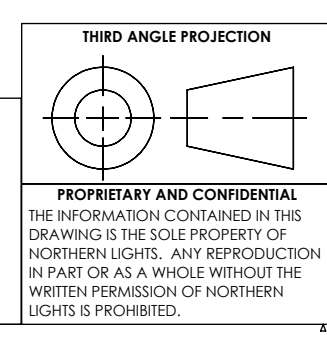
REAR



BOTTOM

NOTE: SEE D-4928 FOR INSTALLATION DIMENSIONS OF THE M99C13.21 WITHOUT OPTIONAL PTO.

THE DIMENSIONS ON THIS DRAWING ARE SUBJECT TO CHANGE. PLEASE CONTACT NLI TO BE SURE YOU HAVE THE MOST CURRENT REVISION.



| REV. | DESCRIPTION | DATE | BY | CHECKED |
|------|--|-----------|----|---------|
| B | MOVED ENGINE TO ECU HARNESS BRACKET TO FRONT OF GENERATOR J-BOX. ECN 7349 | 5/12/2021 | MG | DV |
| A | ADDED ENGINE TO ECU HARNESS KIT. CHANGED WEIGHT: NOW 2540 LB WAS 2530 LB. ECN 6804 | 6/12/2020 | MG | LTP |

| REVISIONS | | | |
|-----------------------------|------|----------|--|
| UNLESS OTHERWISE SPECIFIED: | NAME | DATE | |
| DRAWN: MG | MG | 03/28/17 | |
| CHECKED: TAH | TAH | 03/31/17 | |
| ENG APPR: | | | |
| MFG APPR: | | | |
| Q.A.: | | | |
| COMMENTS: | | | |

| | | | |
|---|--------------|---|--------------|
| | | 4420 14th AVE. N.W. Seattle, WA 98107 (206) 789-3880 www.northern-lights.com | |
| TITLE: INSTALLATION DIMENSIONS M99C13.21 WITH OPTIONAL PTO | | | |
| SIZE: D | PART NO. | DWG. NO. D-4933 | REV B |
| SCALE: 1:10 | WEIGHT: LBS. | SHEET 1 OF 1 | |