

- COOLANT FILL
- EXPANSION TANK
- HEAT EXCHANGER
- RAW WATER PUMP
- CRANK CASE OIL FILL
- RAW WATER PUMP INLET $\varnothing 19$ [$\varnothing .75$]
- ROCKER COVER OIL FILL
- FUEL FILTER
- INTAKE AIR FILTER HOUSING
- EMERGENCY STOP SWITCH

- DRIP PAN DRAIN 1/4" NPT
- CRANK CASE DRAIN 3/8" NPT

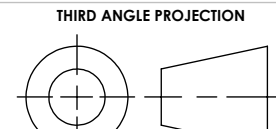
INTAKE AIR SNORKEL INLET
 $\varnothing 50$ [$\varnothing 2.0$] I.D.

WET EXHAUST ELBOW, $\varnothing 76$ [$\varnothing 3.0$]

- FUEL RETURN 1/4 NPT
- FUEL INLET 1/4 NPT

ITEM	WEIGHT
GENSET	590 kg [1301 LBS]
GENSET W/ PTO	632 kg [1393 LBS]

APPLIES TO MODELS	
M944W3G.1	
M944W3G.3	
M944W3G.5	
M944W3G.7	



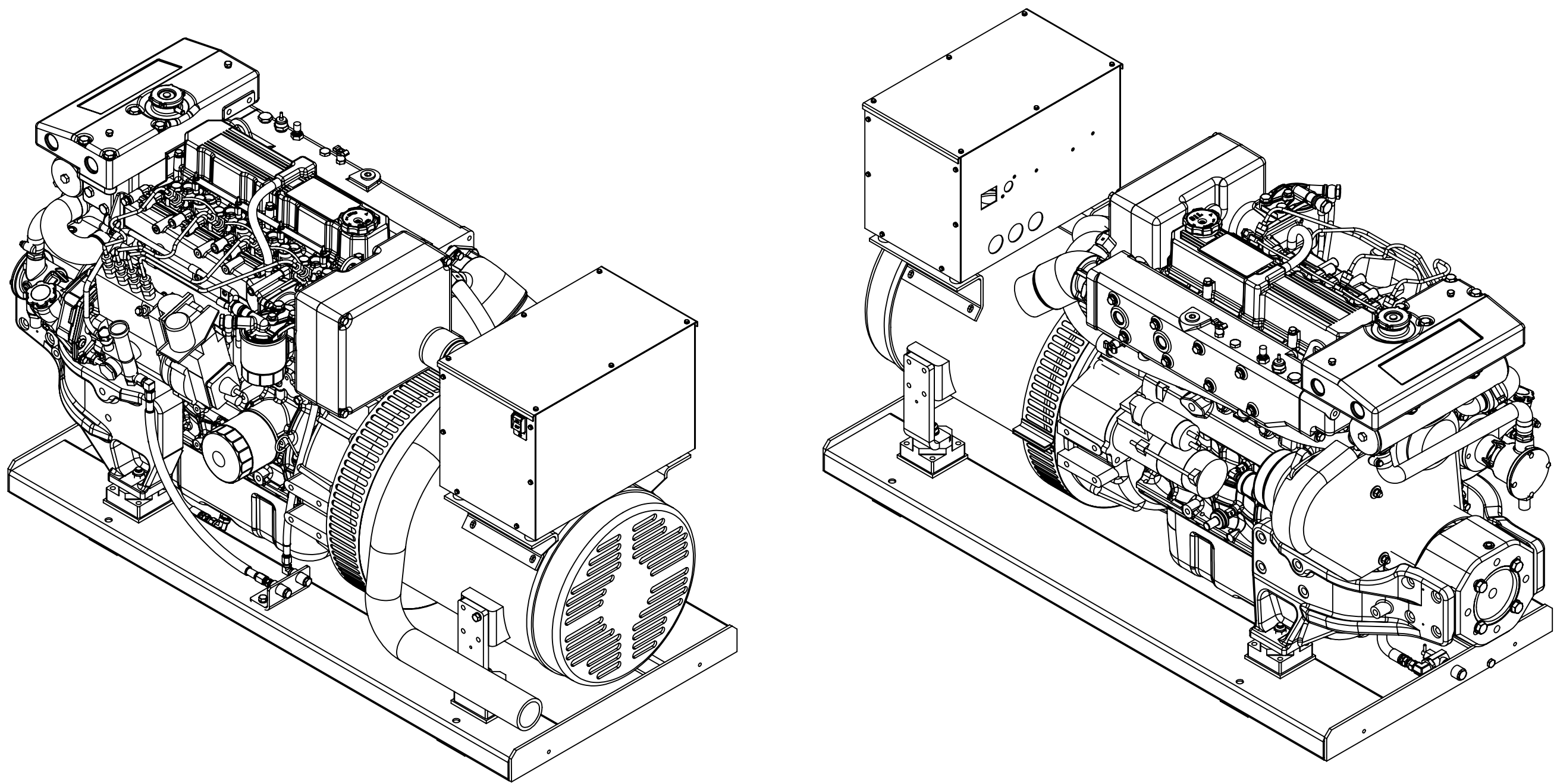
THIRD ANGLE PROJECTION

UNLESS OTHERWISE SPECIFIED:
DIMENSIONS ARE IN MILLIMETERS
TOLERANCES:
ANGULAR: BEND ±
X ±
XX ±
INTERPRET GEOMETRIC TOLERANCING PER ASME Y14.5M
FINISH
DO NOT SCALE

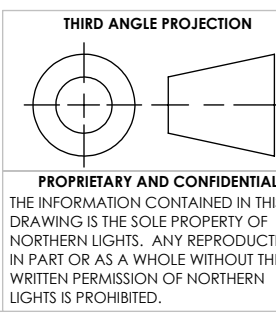
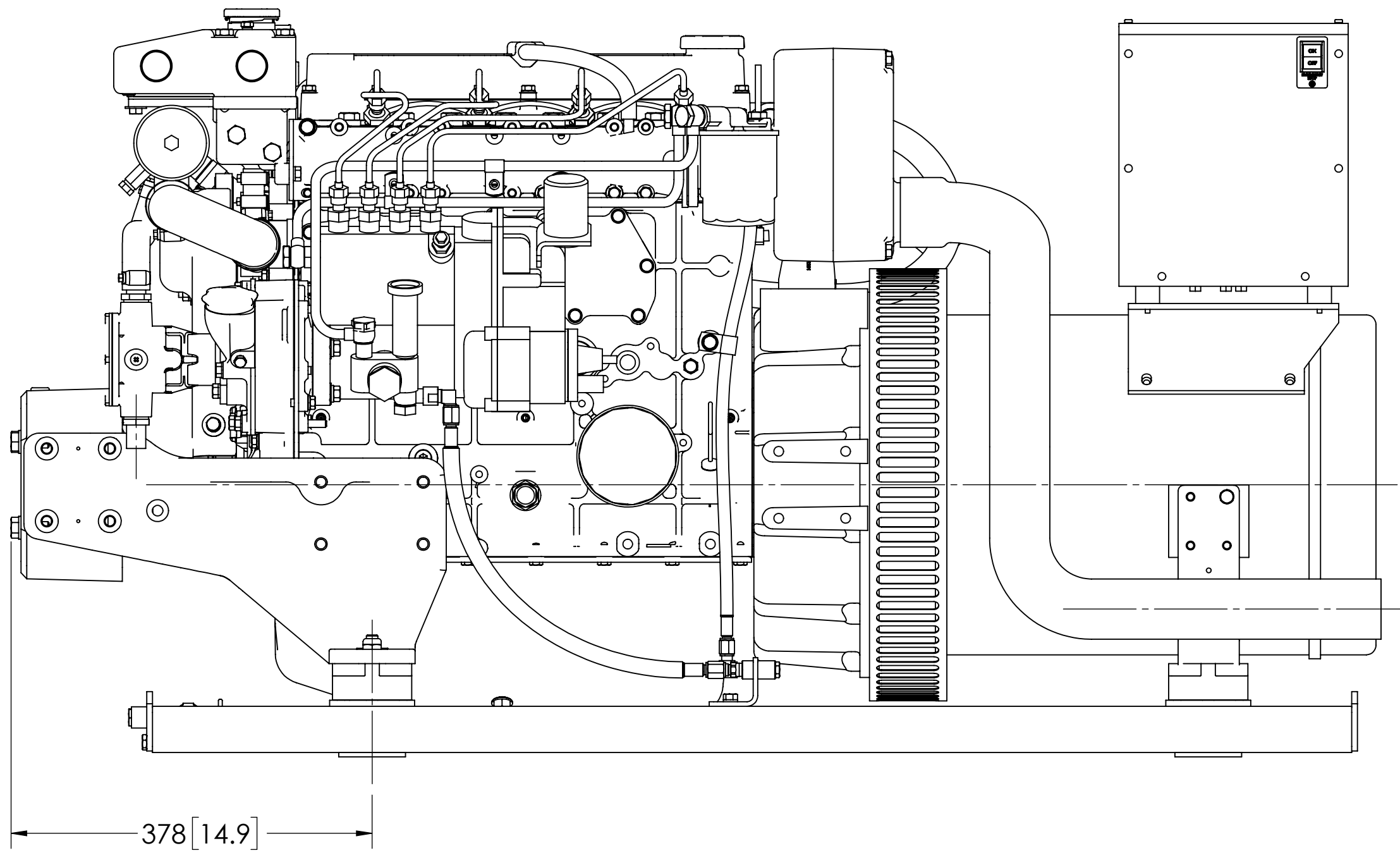
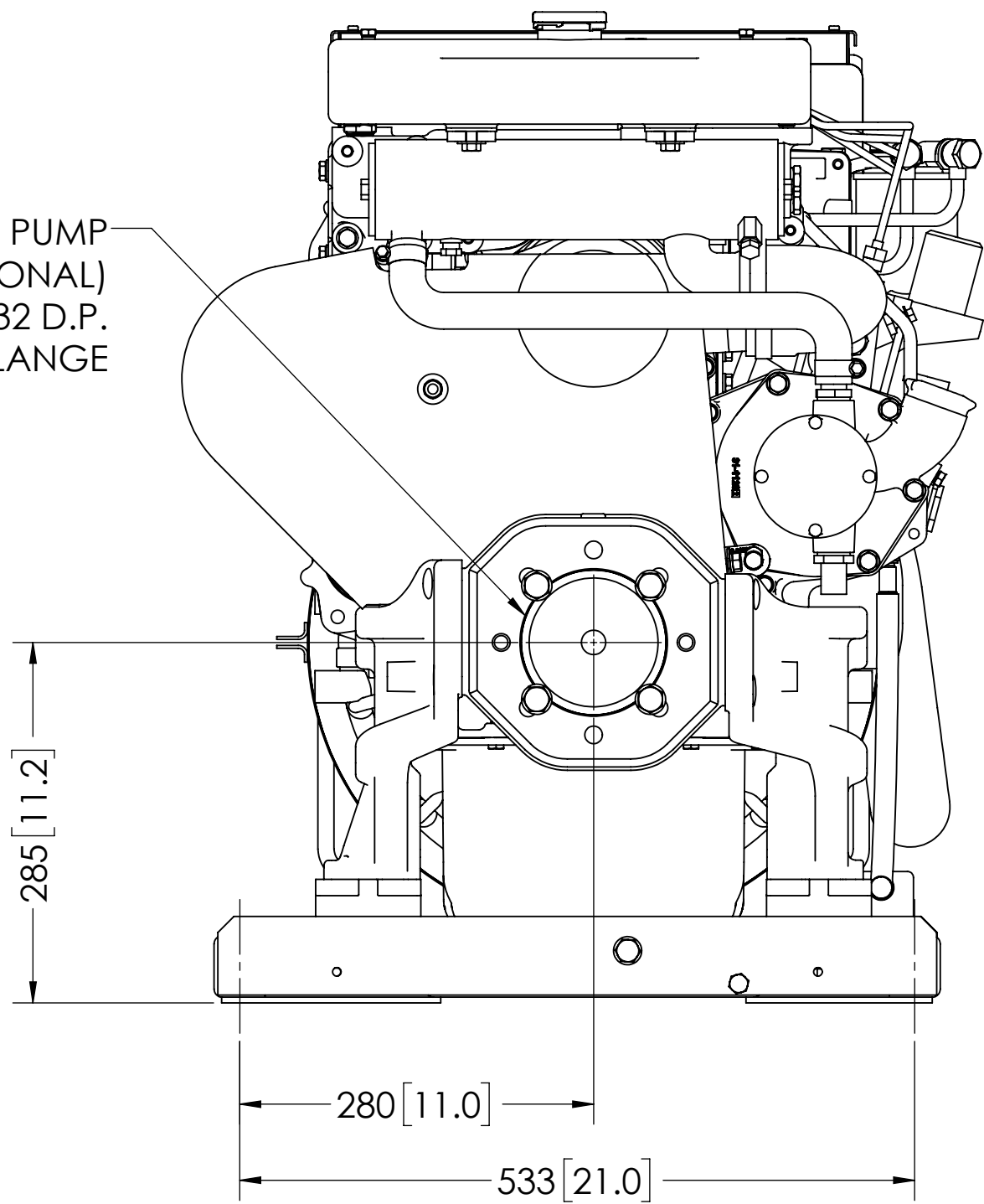
A	ADDED PAGE 2 FOR PTO OPTION, ECN# 7522		7/26/2021	MK	LTP	
REV.	DESCRIPTION		DATE	BY	CHECKED	
REVISIONS						
NAME			DATE			
DRAWN	LTP	11/10/2020	<div><div><div>NORTHERN LIGHTS</div><div><div></div></div></div><div>4420 14th AVE. N.W. Seattle, WA 98107 (206) 789-3880 www.northern-lights.com</div></div>			
CHECKED	-	-				
ENG APPR.						
MFG APPR.						
Q.A.			TITLE:			
COMMENTS:			INSTALLATION DIMENSIONS M944W3G HEAT EXCHANGED			
			SIZE	PART NO.	DWG. NO.	REV
			D	SEE TABLE	D-5282	A
SCALE: 1:8		WEIGHT:		SHEET 1 OF 2		


F
E
D
C
B
A

8 7 6 5 4 3 2 1



POWER TAKE-OFF PUMP
MOUNTING FACE (OPTIONAL)
"B" SPLINE 13T 16/32 D.P.
2 AND 4 BOLT FLANGE



UNLESS OTHERWISE SPECIFIED: DIMENSIONS ARE IN MILLIMETERS TOLERANCES: ANGULAR: MACH ± 0.5° BEND ± 1.0° X ± 0.3 .XX ± 0.3 INTERPRET GEOMETRIC TOLERANCING PER ASME Y14.5M MATERIAL: FINISH: DO NOT SCALE		DRAWN MK CHECKED LTP ENG APPR. MEG APPR. Q.A. COMMENTS:	NAME DATE 7/26/21 7/26/21	 4420 14th AVE. N.W. Seattle, WA 98107 (206) 789-3800 www.northern-lights.com
TITLE: INSTALLATION DIMENSIONS M944W3G HEAT EXCHANGED W/ PTO		SIZE D	PART NO. SEE TABLE	
SCALE: 1:5		WEIGHT:		SHEET 2 OF 2

D-5282
A

A