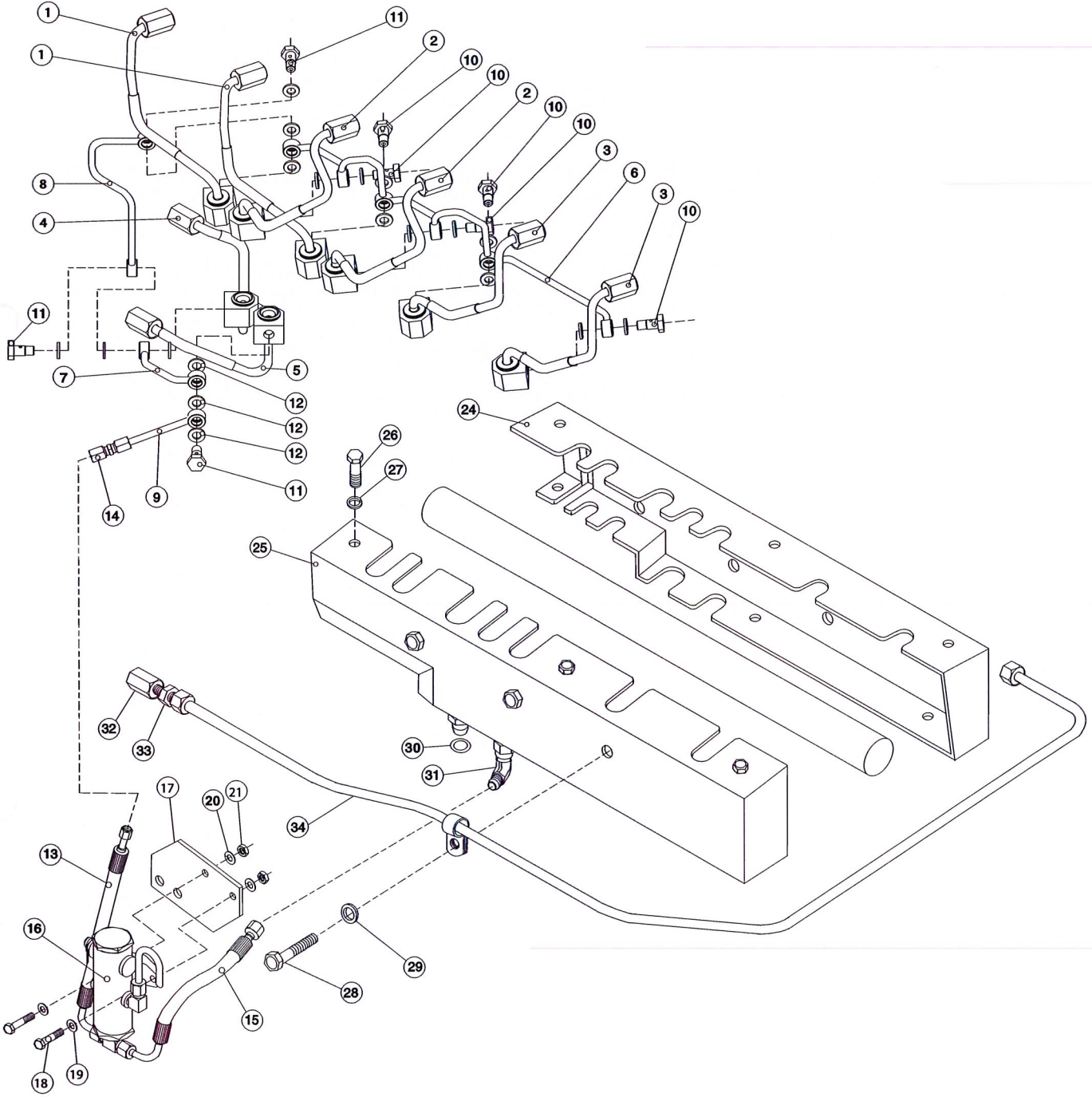


Double Wall Injection Lines and Alarm Tank

L- M1066H High Pressure Common Rail



A-10636/ ST14487-1

## Double Wall Injection Lines and Alarm Tank

L- M1066H High Pressure Common Rail

KEY	PART NUMBER	QTY	DESCRIPTION	SERIAL NUMBER
1	27-59512	2	Injection Line #1 and #2 Double Wall	-
2	27-59534	2	Injection Line #3 and #4 Double Wall	-
3	27-59656	2	Injection Line #5 and #6 Double Wall	-
4	27-59504	1	Tube Assembly, HPCR Manifold Inlet #1	-
5	27-59505	1	Tube Assembly, HPCR Manifold Supply #2	-
6	27-59620	1	Tube, Fuel Return to Alarm Tank	-
7	27-59507	1	Tube, Fuel Return to Alarm Tank, Low	-
8	27-59508	1	Tube, Fuel Return to Alarm Tank	-
9	27-59509	1	Tube, Fuel Return to Alarm Tank	-
10	21-59517	5	Banjo Bolt	-
11	15-59518	3	Banjo Bolt, Double Length	-
12	15-55701	19	Banjo Washer	-
13	18-59512	1	Hose Assembly, 1/4" I.D. x 12" S/S	-
14	21-59514	1	Reducing Union, Steel 8 mm x 6 mm	-
15	18-59513	1	Hose Assembly 1/4" I.D. x 13" S/S	-
16	10-50002	1	Alarm Tank Assembly	-
17	23-59601	1	Bracket, Alarm Tank Mtg.	-
18	12-00711	2	Capscrew, Hex Head M8 x 1.25 x 20 mm	-
19	15-00701	2	Flat Washer M8	-
20	15-00702	2	Lock Washer, Helical M8	-
21	14-00711	2	Hex Nut M8 x 1.25	-
22	12-00911	2	Capscrew, Hex Head M12 x 1.75 x 20 mm	-
23	15-00912	2	Lock Washer, Helical M12	-
24	10-59601	1	Rear Cover, HPCR Manifold	-
25	10-59602	1	Front Cover, HPCR Manifold	-
26	12-00029	6	Capscrew, Hex Head M6 x 1.0 x 10 mm S/S	-
27	15-00610	6	Lock Washer, Helical M6 S/S	-
28	12-09048	3	Capscrew, Hex Head M10 x 1.5 x 60 mm S/S	-
29	15-09805	3	Flat Washer M10 S/S	-
30	16-15006	1	O-ring	-
31	21-59519	1	Elbow, 45° Swivel, Steel 3/8- 37T	-
32	21-00056	1	Female Adapter, Steel 1/4 NPT x M14 x 1.5	-
33	21-09702	1	Male Connector, Brass 1/4 NPT x 3/8"	-
34	27-59637	1	Tube Assembly, Final Fuel Filter Outlet	-