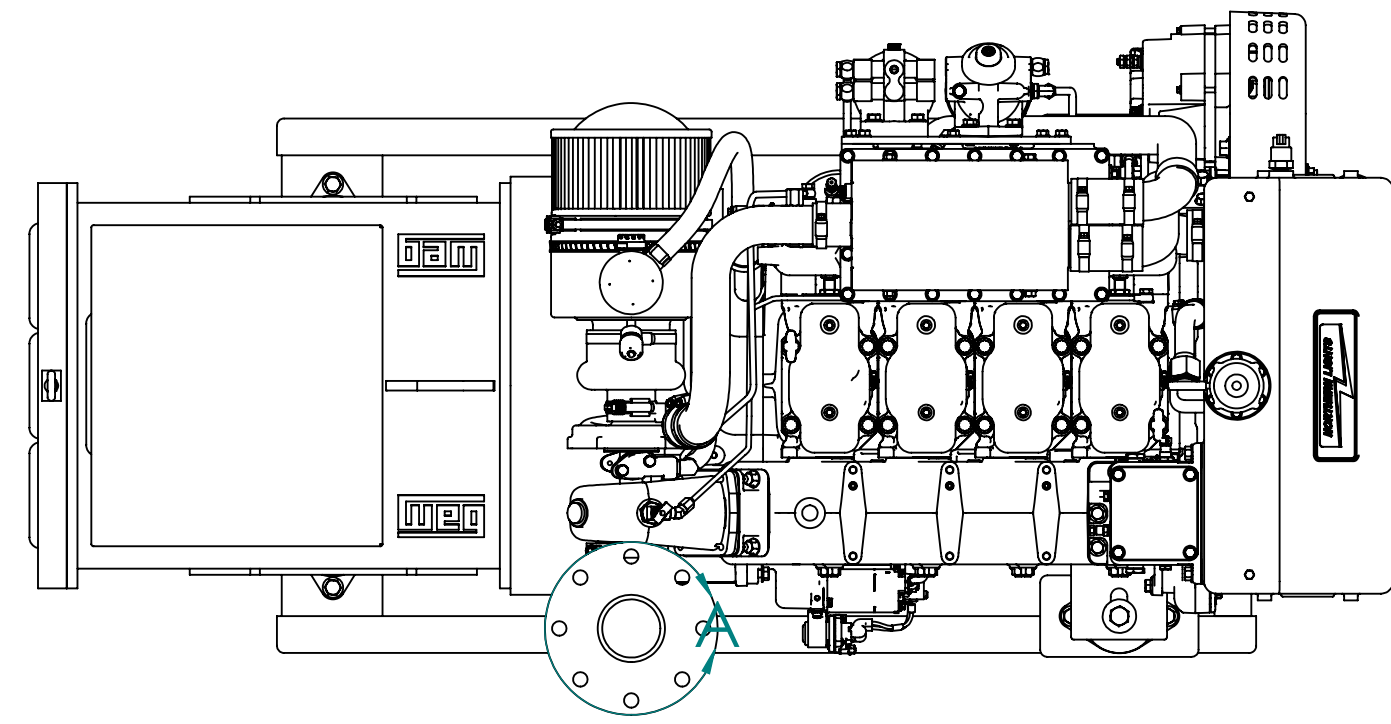


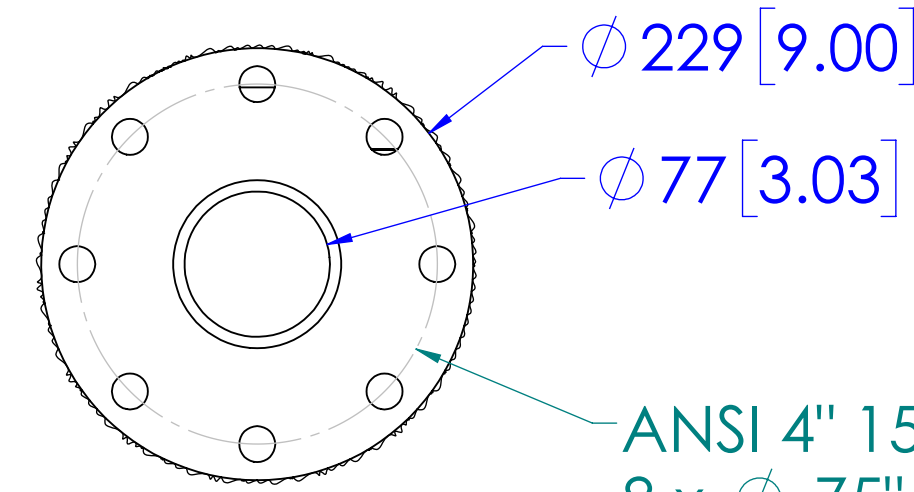
MODEL	DESCRIPTION	WEIGHT - LBS (KG)
C4105A1	85KW @ 1500RPM (50Hz), KEEL COOLED	2390 [1084]
C4105A2	100KW @ 1500RPM (50Hz), KEEL COOLED	
C4105A3	108 KW @ 1500RPM (50Hz), KEEL COOLED	

*NOTE: WEIGHT INCLUDES OIL, BUT NO COOLANT. VALUES ARE APPROXIMATIONS AND ARE SUBJECT TO CHANGE. PLEASE CONTACT NLI TO BE SURE YOU HAVE THE LATEST REVISION.

ITEM	DESCRIPTION	ITEM	DESCRIPTION
1	KEEL COOLER INLET ϕ 2.0 H.B.	14	ENGINE OIL FILL
2	KEEL COOLER OUTLET ϕ 2.0 H.B.	15	FUEL RETURN PORT (3/8-37T)
3	COOLANT FILL	16	FUEL SUPPLY PORT (3/8-37T)
4	AFTERCOOLER	17	OIL DRAIN PORT (1/2" NPT)
5	OPTIONAL DRY EXHAUST ELBOW	18	ALTERNATOR
6	ELECTRIC STARTER MOTOR	19	
7	EXPANSION TANK	20	
8	THERMOSTAT HOUSING	21	
9	FUEL/WATER SEPERATOR	22	
10	FINAL FUEL FILTER	23	
11	OIL FILTER	24	
12	AIR FILTER & COALESCING FILTER	25	
13	ENGINE OIL DIPSTICK	26	

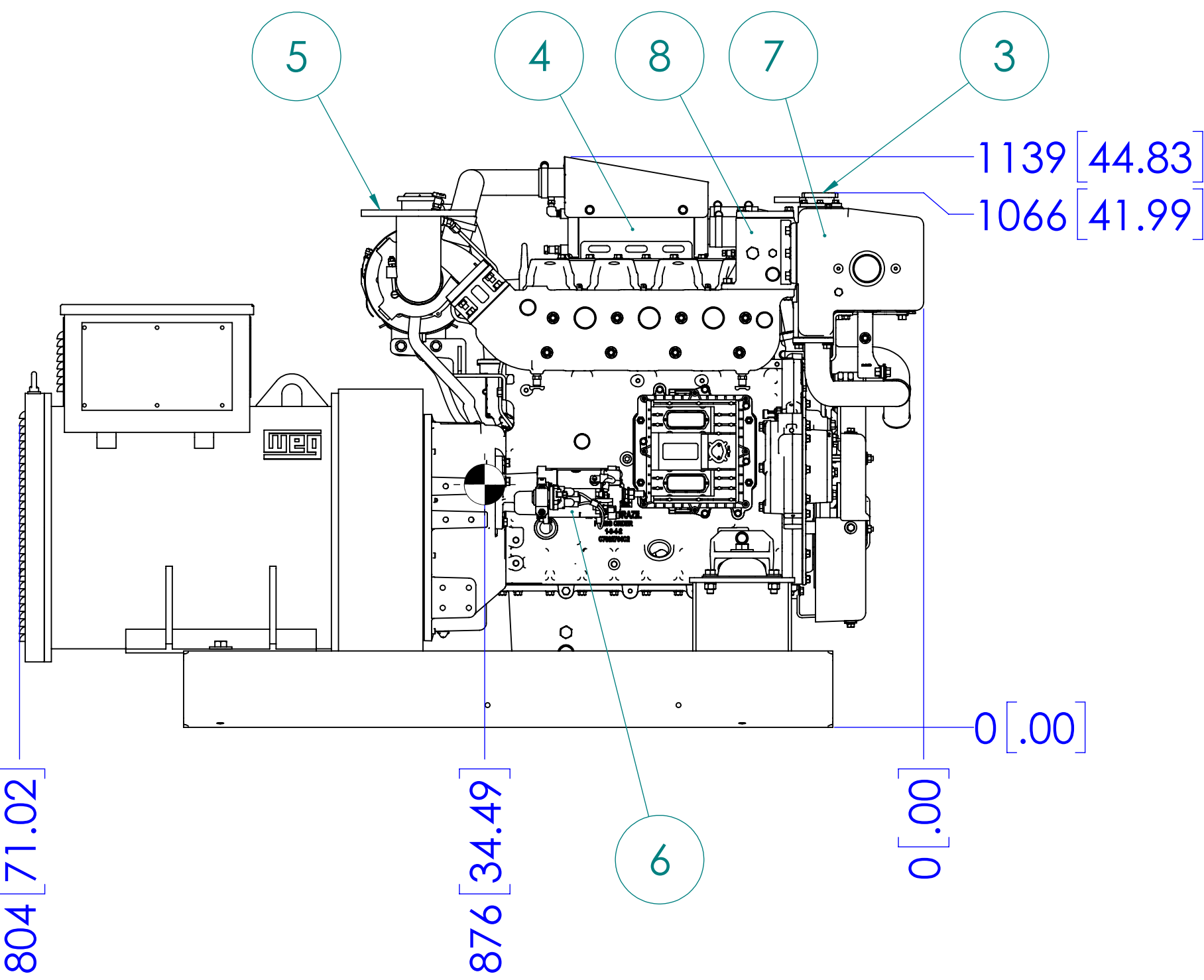


TOP

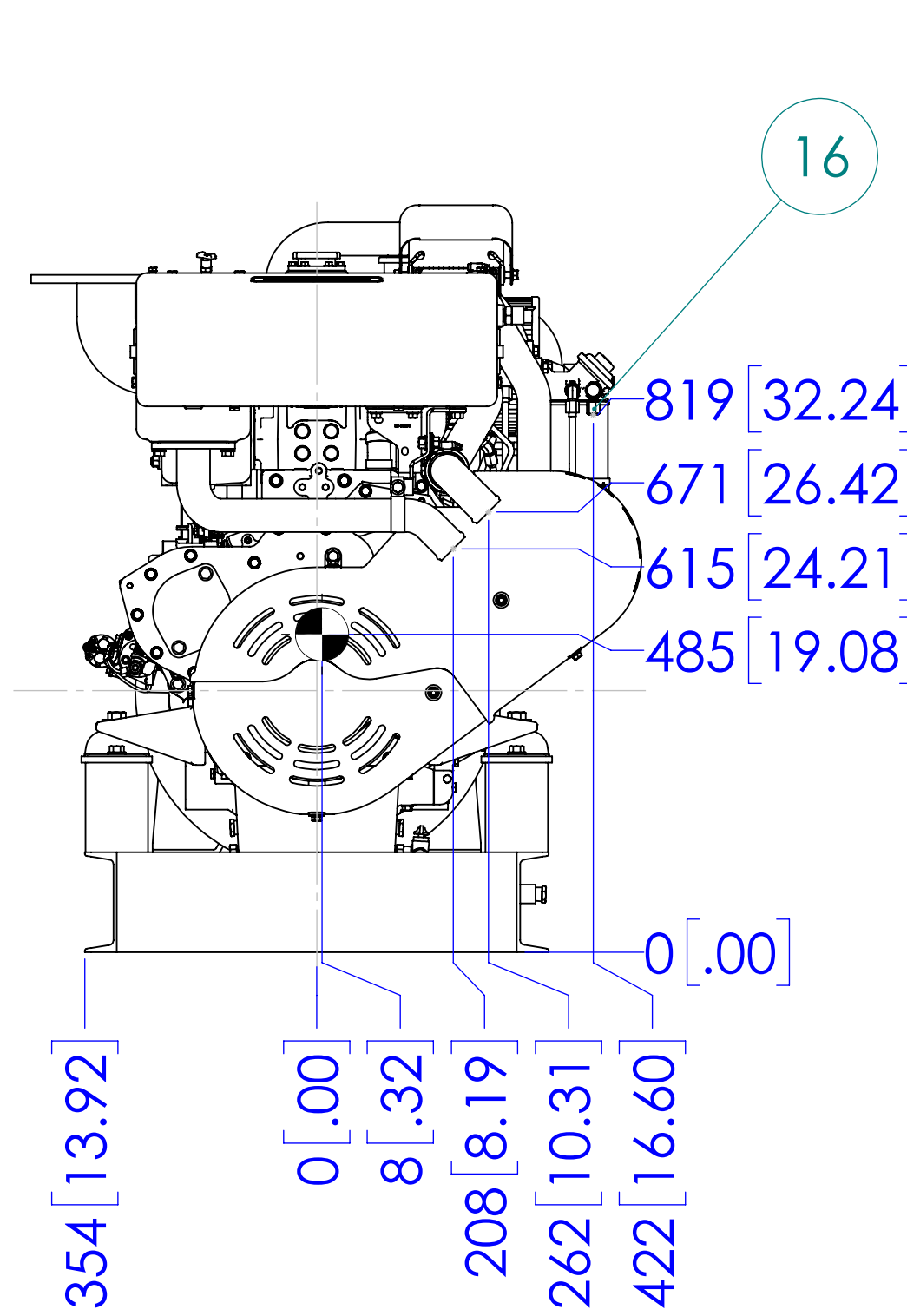


ANSI 4" 150# FLANGE
8 x ϕ .75" THRU HOLES
ON 7.5" B.C.

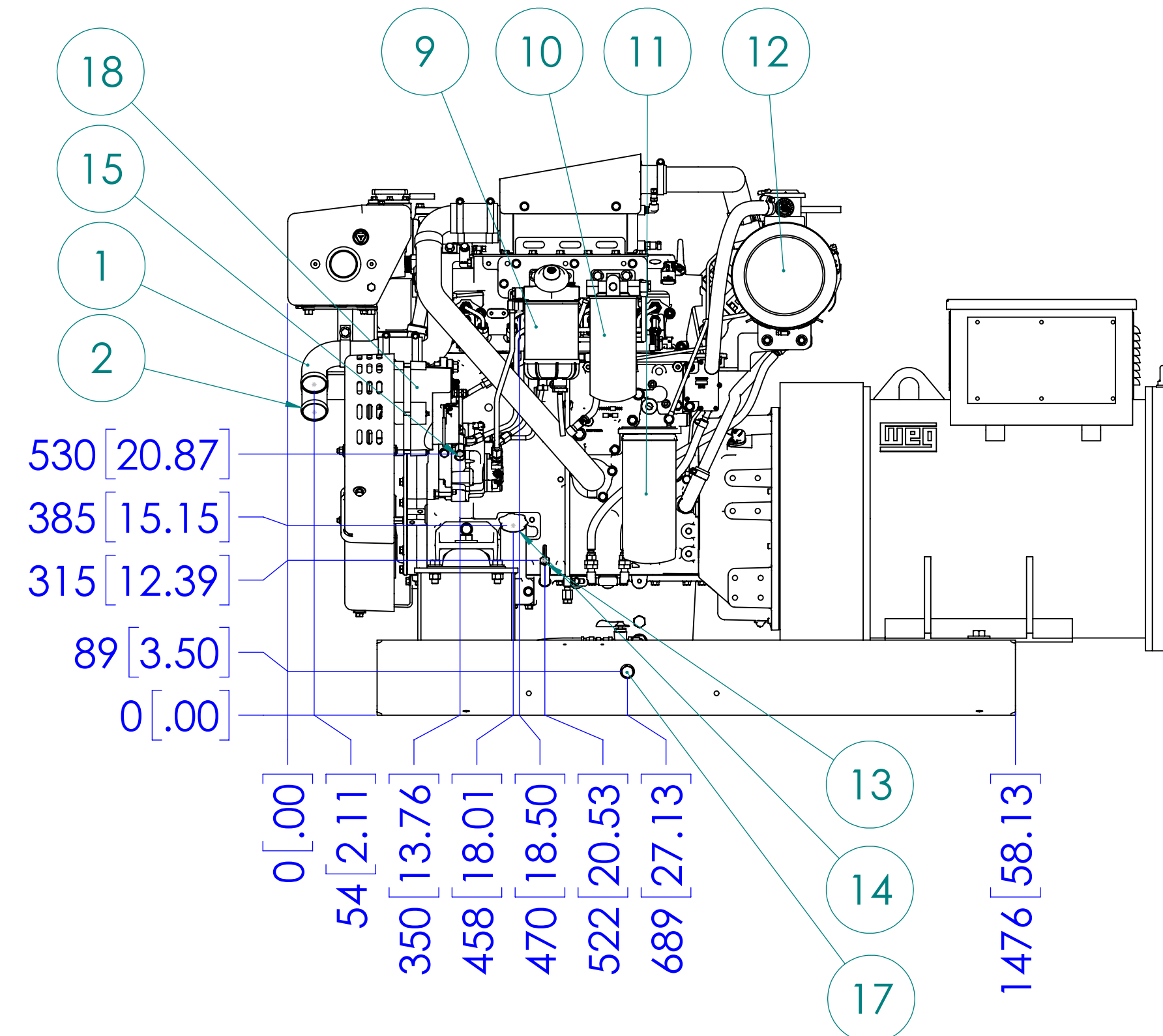
DETAIL A
OPTIONAL DRY EXHAUST FLANGE
SCALE 1 : 4



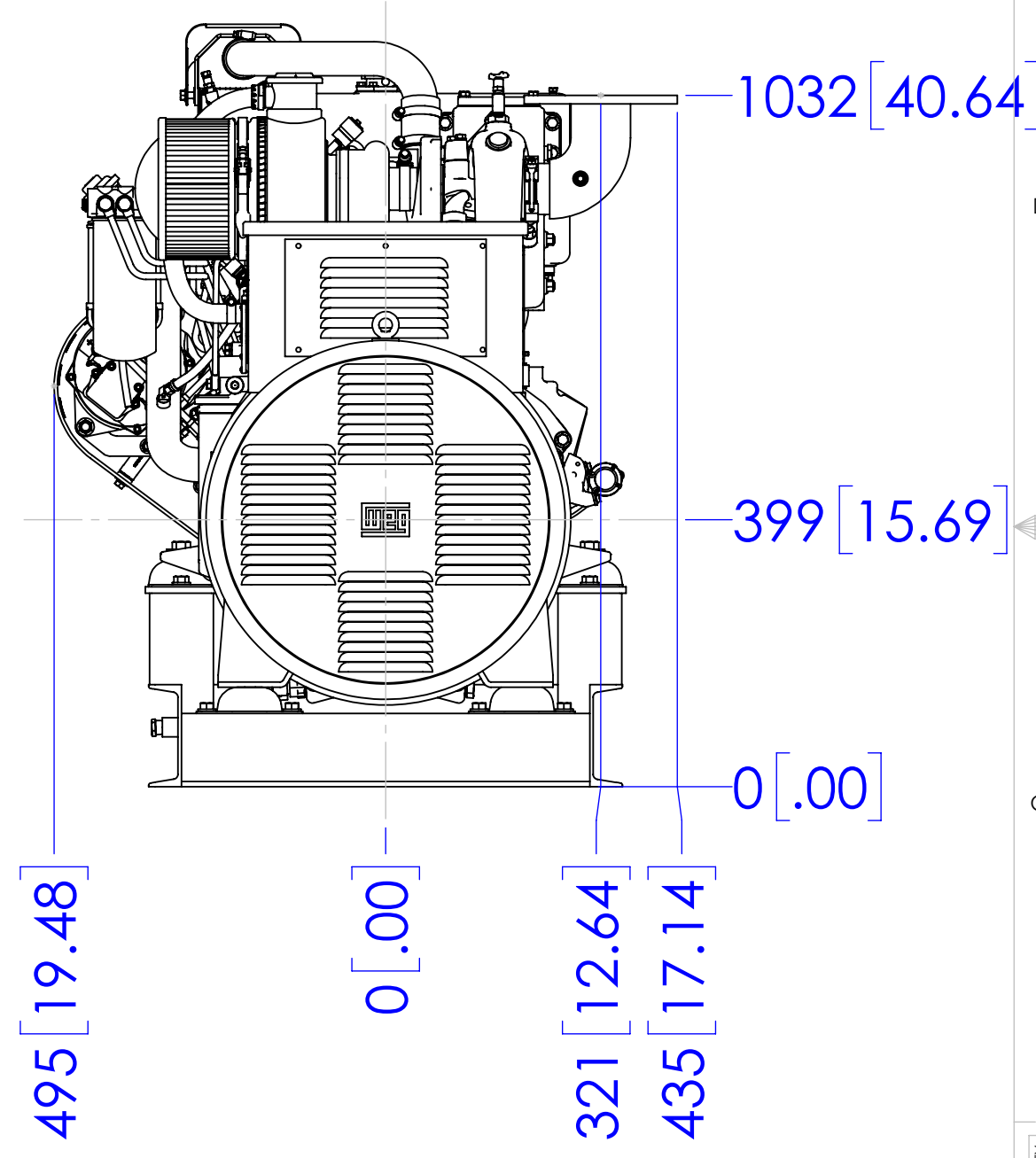
LEFT SIDE



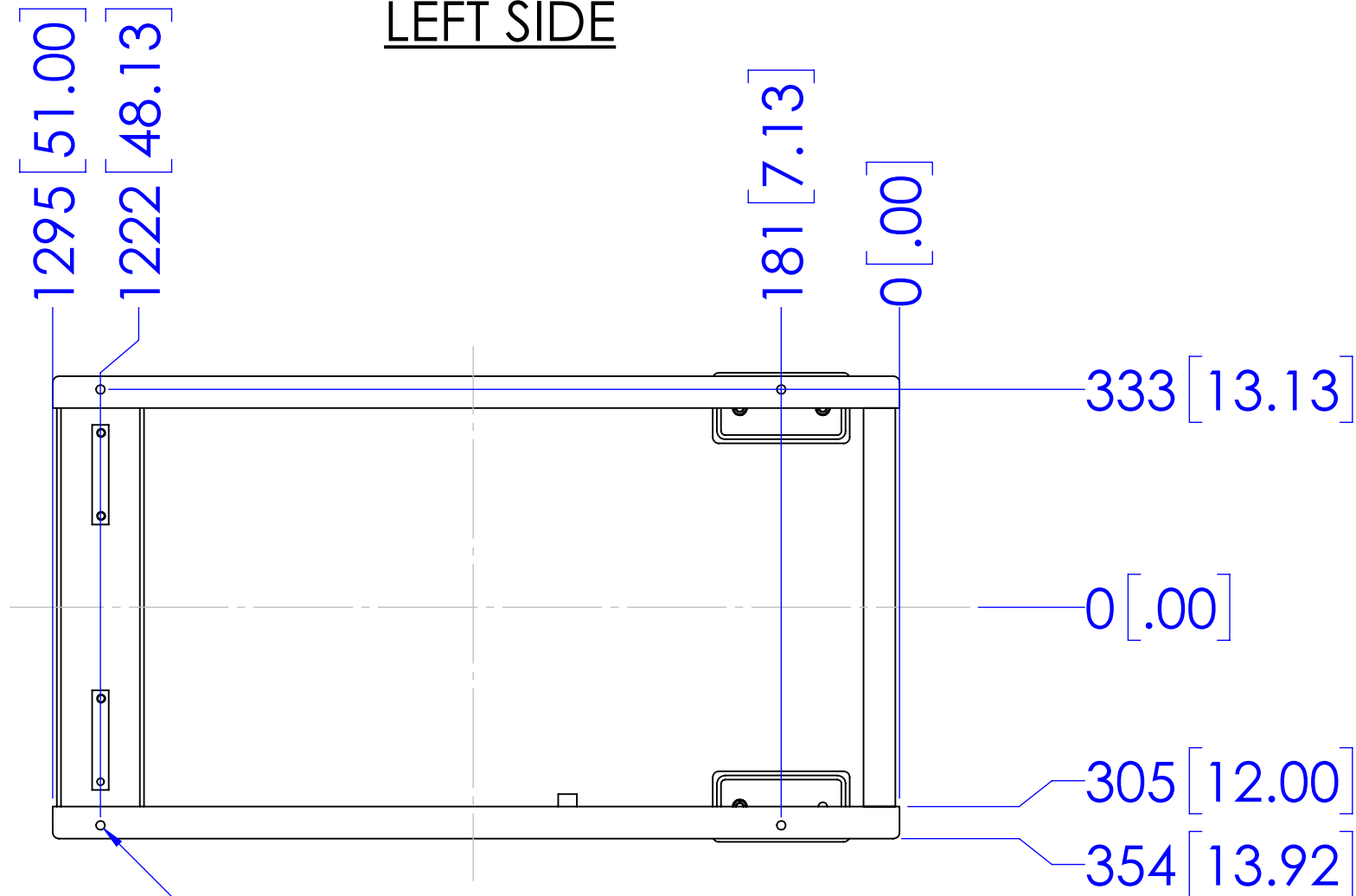
FRONT



SERVICE SIDE

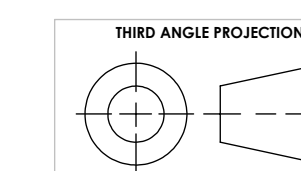


REAR



MOUNTING

4X ϕ 13.50 [0.53] THRU



PROPRIETARY AND CONFIDENTIAL
THE INFORMATION CONTAINED IN THIS DRAWING IS THE SOLE PROPERTY OF NORTHERN LIGHTS. ANY REPRODUCTION IN PART OR AS A WHOLE WITHOUT THE WRITTEN PERMISSION OF NORTHERN LIGHTS IS PROHIBITED.

UNLESS OTHERWISE SPECIFIED:		NAME	DATE
DIMENSIONS ARE IN MILLIMETERS		JPW	7/22/2024
TOLERANCES:		CHECKED	
ANGULAR: MACH \pm 0.5° BEND \pm 1.0°		ENG APPR.	
.X \pm 0.3		MEG APPR.	
.XX \pm 0.3		Q.A.	
INTERPRET GEOMETRIC TOLERANCING PER: ASME Y14.5M		COMMENTS:	
MATERIAL:			
FINISH:			
DO NOT SCALE			



TITLE: INSTALLATION DIMENSIONS C4105A1-3, 50HZ, GTA251AHD			
SIZE	PART NO.	DWG. NO.	REV
D	SEE TABLE	D-5535	
SCALE: 1:10	WEIGHT:		SHEET 1 OF 1

REV D-5535