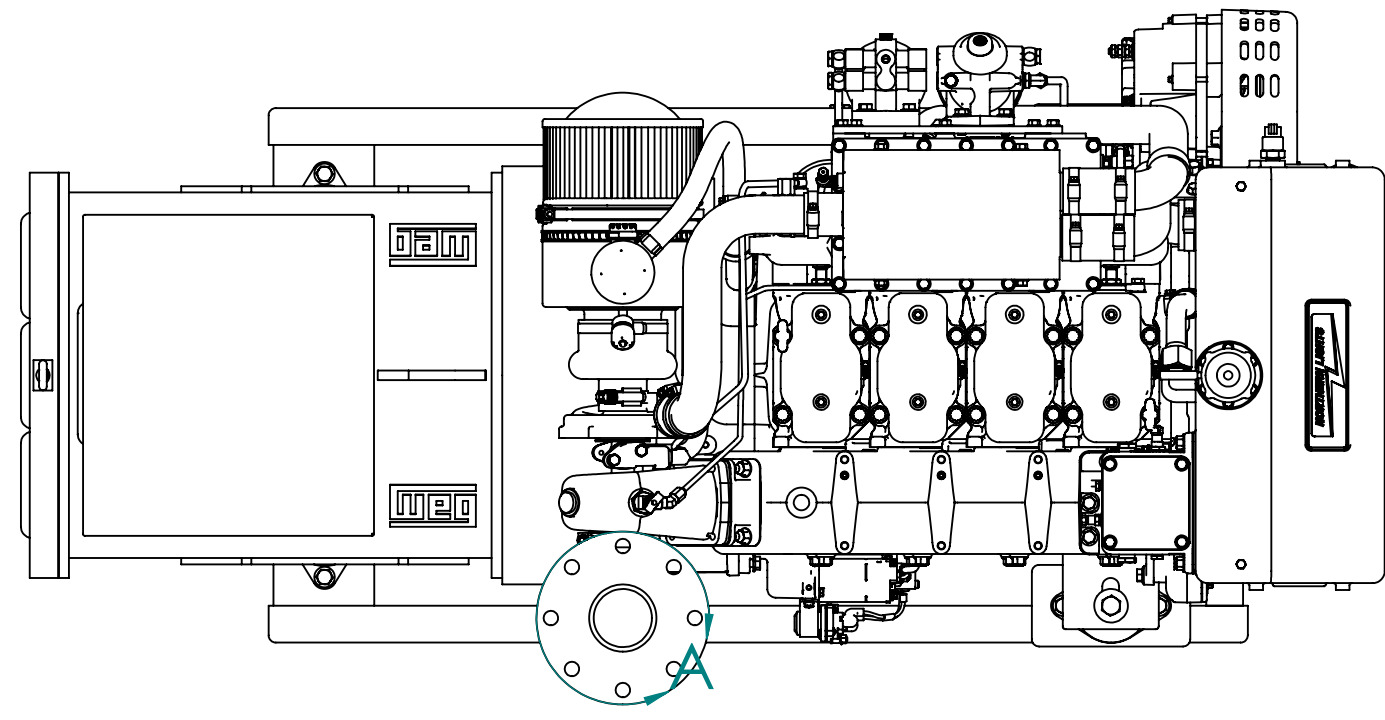


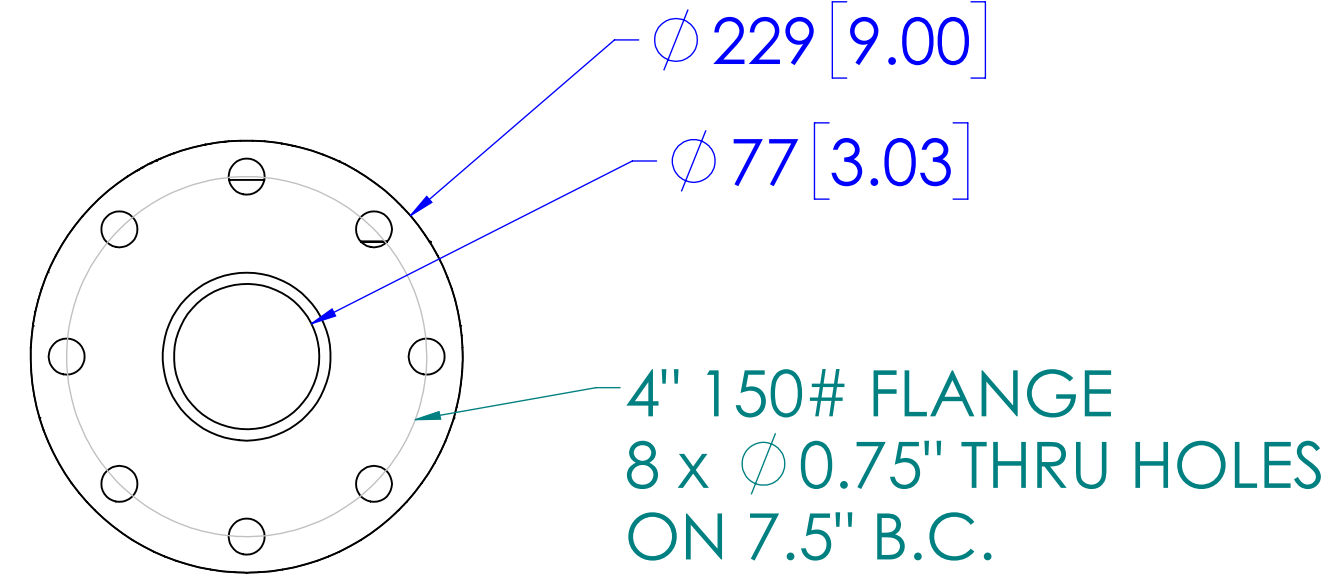
MODEL	DESCRIPTION	WEIGHT - LBS (KG)
C4105A4.6	117KW @ 1500RPM (50Hz), KEEL COOLED	1084 [2390]

\*NOTE: WEIGHT INCLUDES OIL, BUT NO COOLANT. VALUES ARE APPROXIMATIONS AND ARE SUBJECT TO CHANGE. PLEASE CONTACT NLI TO BE SURE YOU HAVE THE LATEST REVISION.

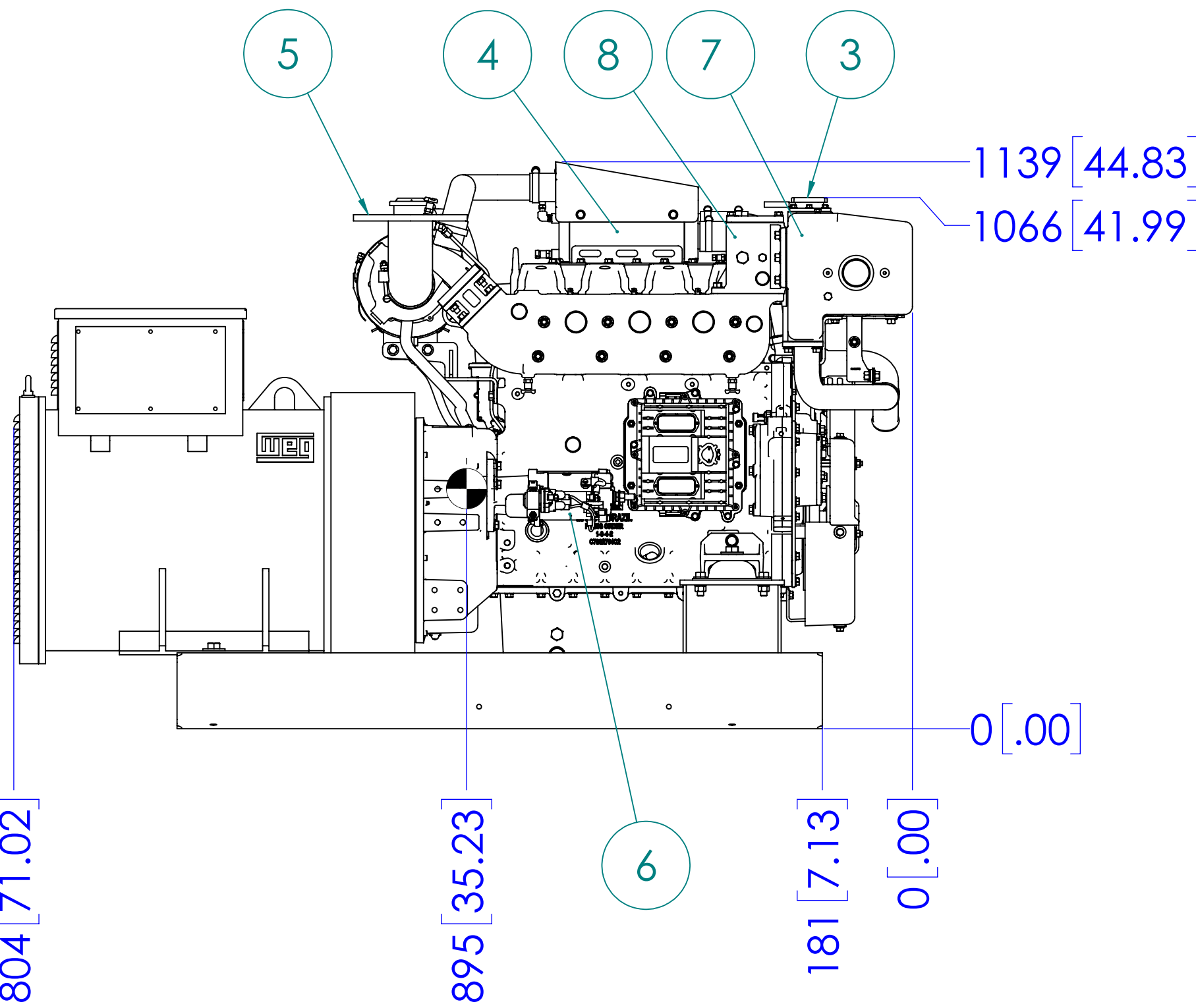
ITEM	DESCRIPTION	ITEM	DESCRIPTION
1	KEEL COOLER INLET $\varnothing$ 2.0 H.B.	14	ENGINE OIL FILL
2	KEEL COOLER OUTLET $\varnothing$ 2.0 H.B.	15	FUEL RETURN PORT (3/8-37T)
3	COOLANT FILL	16	FUEL SUPPLY PORT (3/8-37T)
4	AFTERCOOLER	17	OIL DRAIN PORT (1/2" NPT)
5	DRY EXHAUST ELBOW	18	ALTERNATOR
6	ELECTRIC STARTER MOTOR	19	
7	EXPANSION TANK	20	
8	THERMOSTAT HOUSING	21	
9	FUEL/WATER SEPERATOR	22	
10	FINAL FUEL FILTER	23	
11	OIL FILTER	24	
12	AIR FILTER & COALESCING FILTER	25	
13	ENGINE OIL DIPSTICK	26	



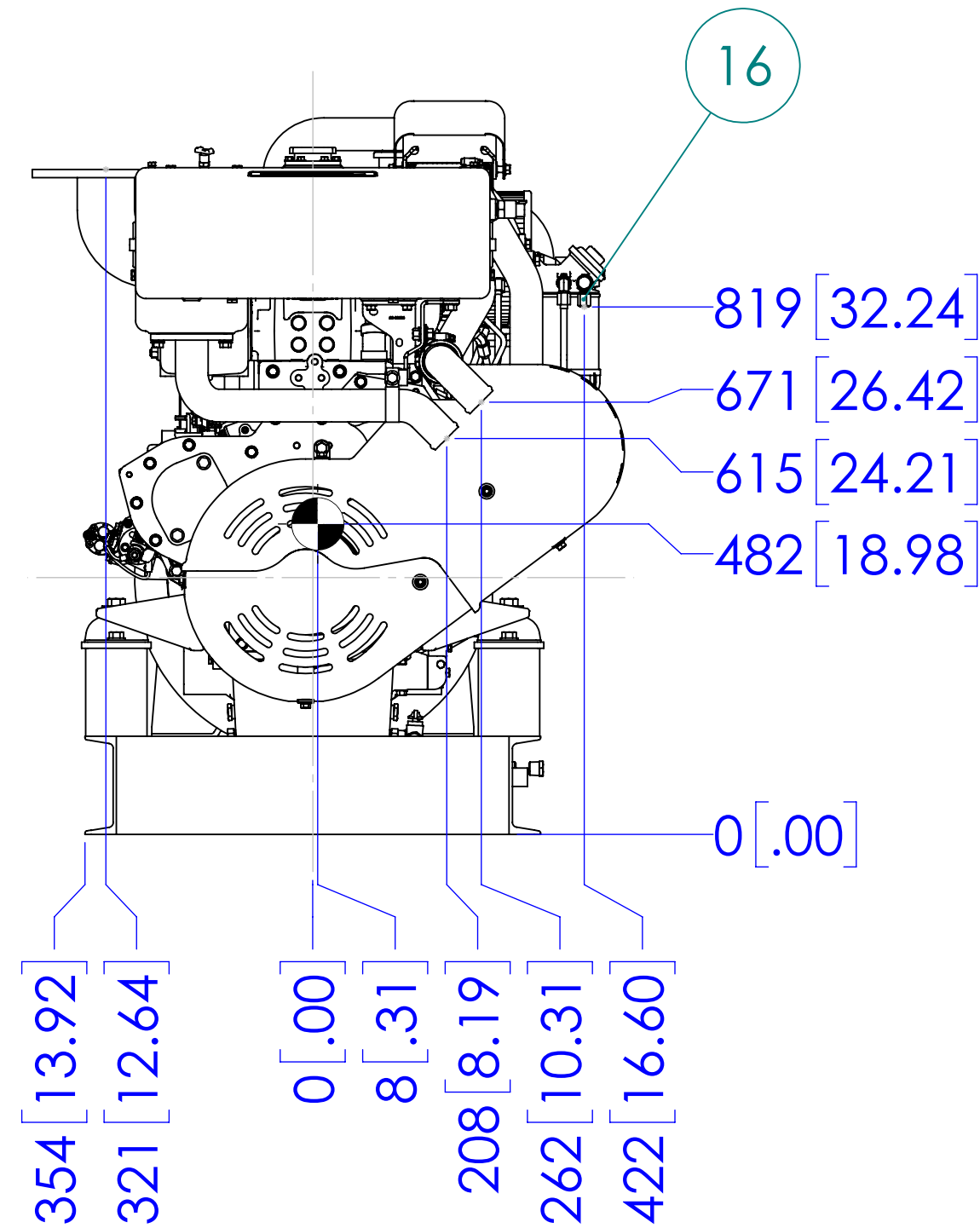
TOP



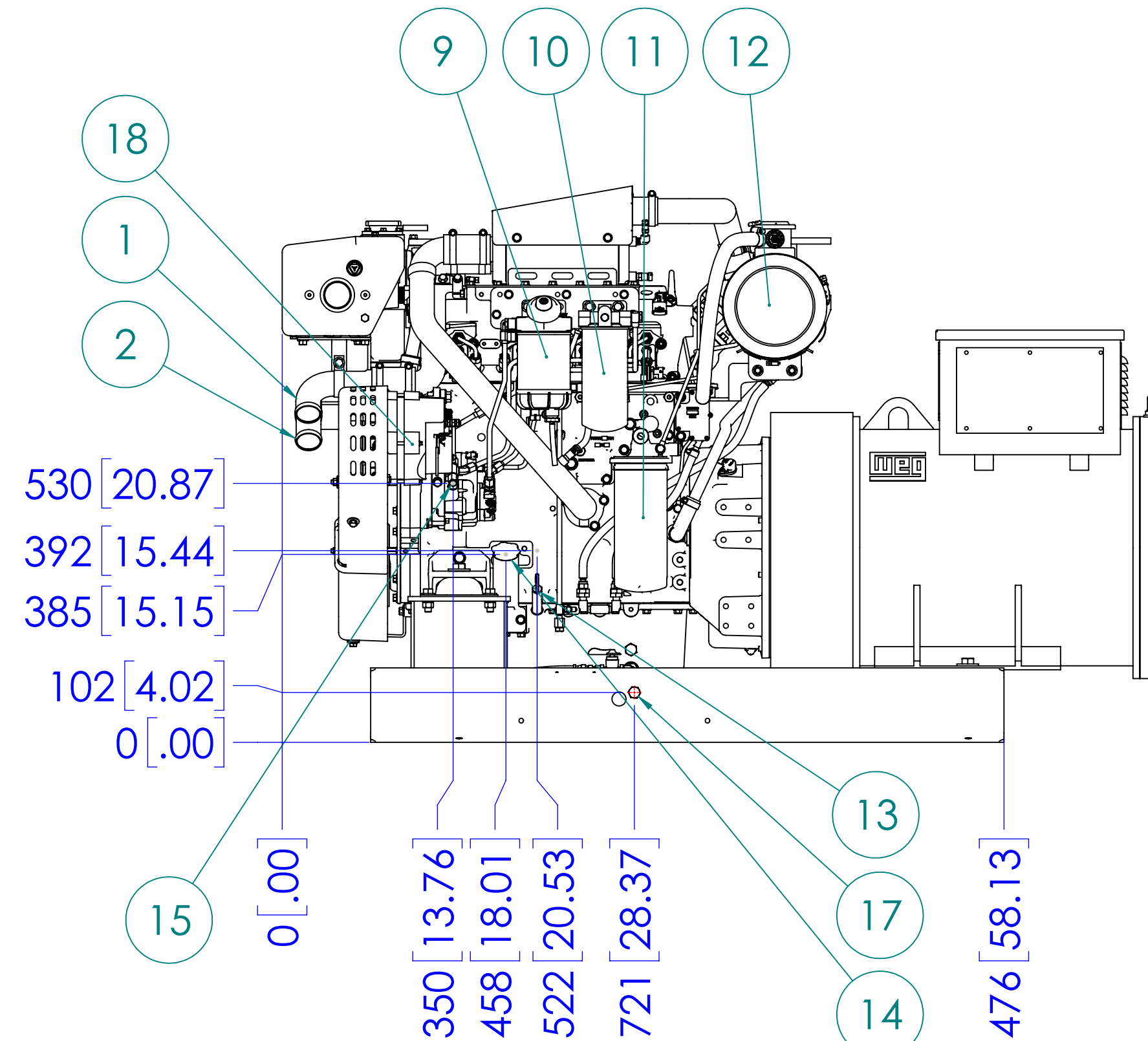
DETAIL A  
DRY EXHAUST FLANGE  
SCALE 1 : 4



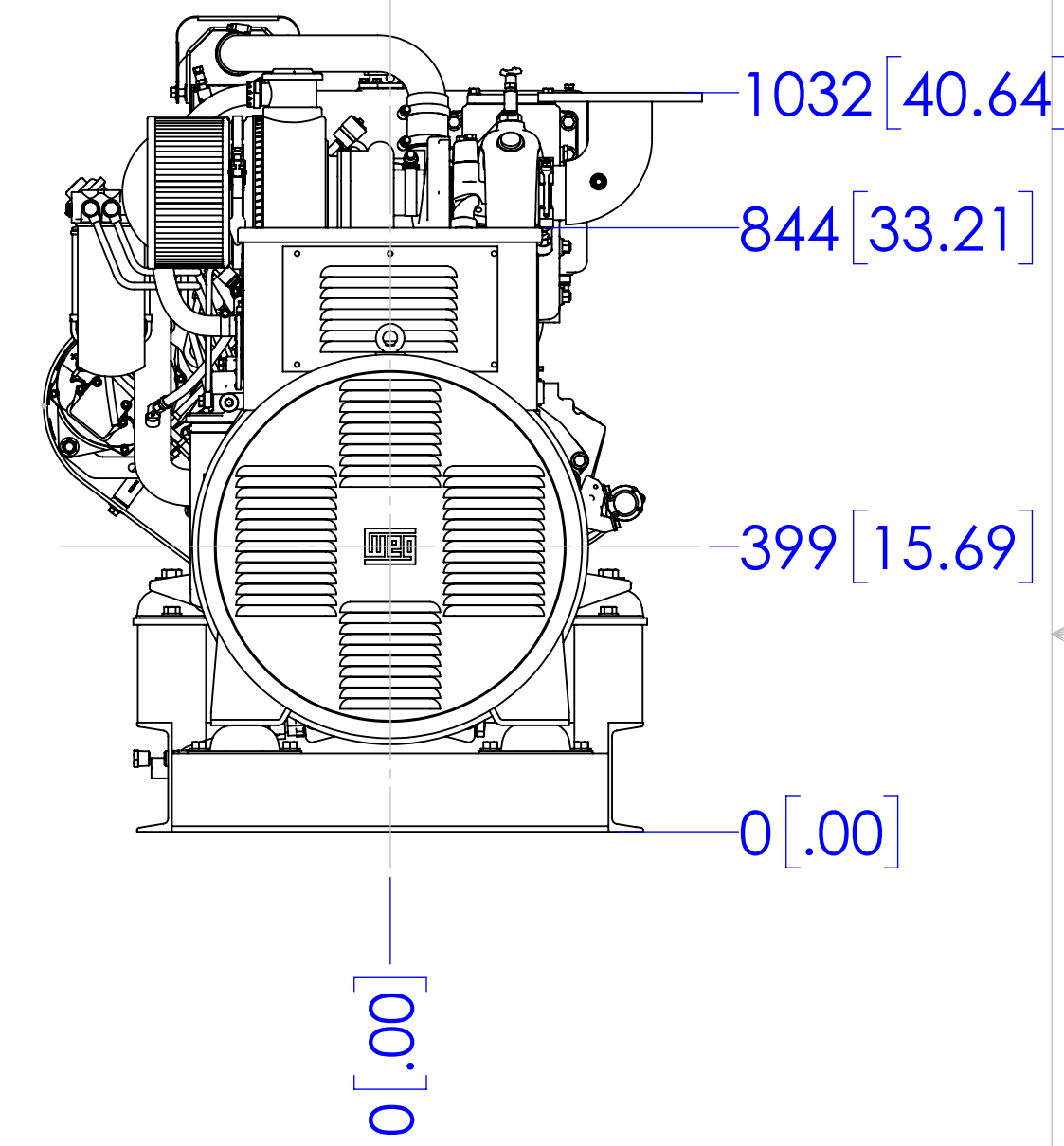
LEFT SIDE



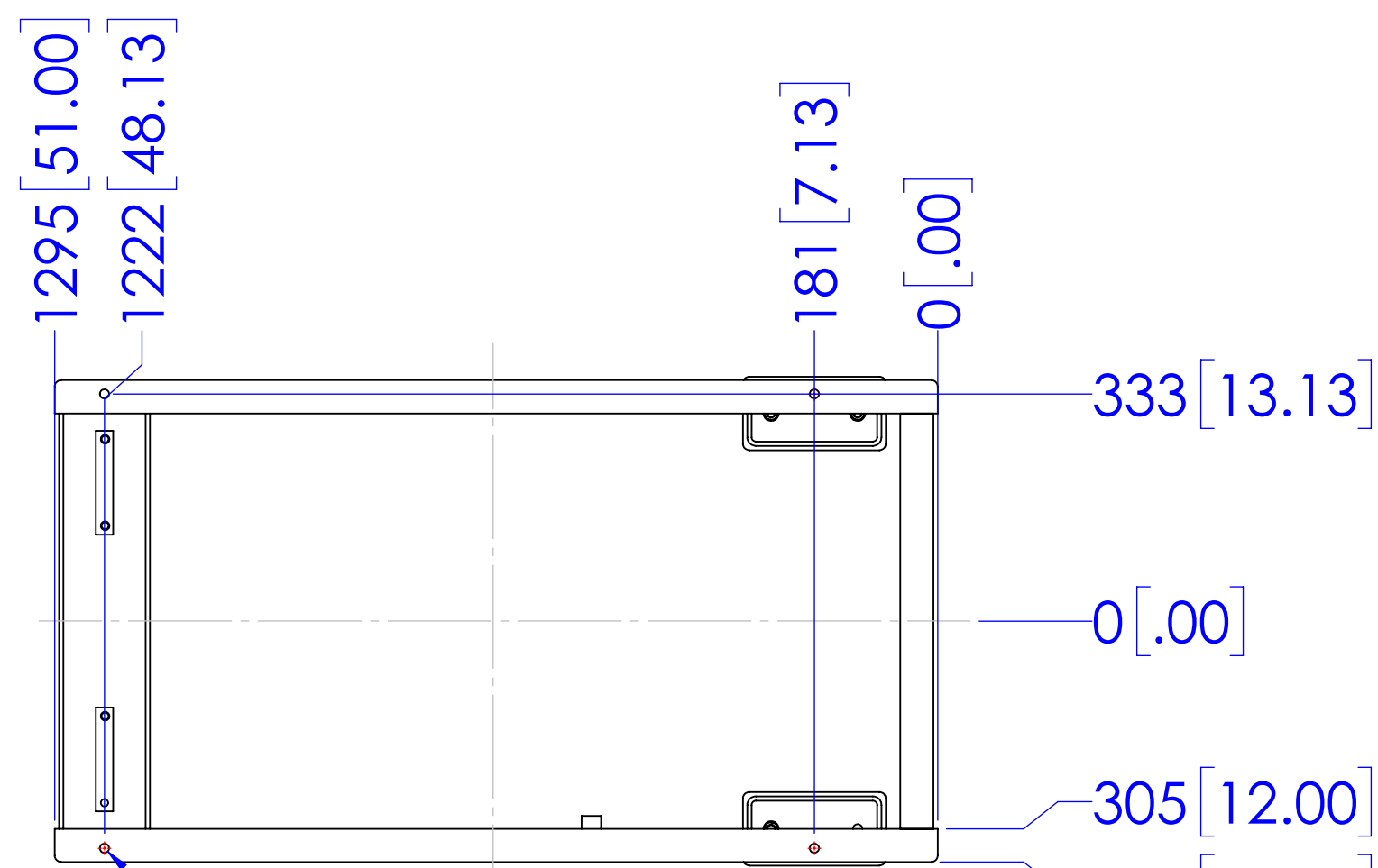
FRONT



SERVICE SIDE

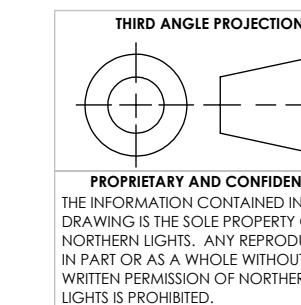


REAR



MOUNTING

4X  $\varnothing$  13.50 [0.53] THRU



PROPRIETARY AND CONFIDENTIAL  
THE INFORMATION CONTAINED IN THIS DRAWING IS THE SOLE PROPERTY OF NORTHERN LIGHTS. ANY REPRODUCTION IN PART OR AS A WHOLE WITHOUT THE WRITTEN PERMISSION OF NORTHERN LIGHTS IS PROHIBITED.

UNLESS OTHERWISE SPECIFIED: DIMENSIONS ARE IN MILLIMETERS TOLERANCES: ANGULAR: MACH $\pm$ 0.5° BEND $\pm$ 1.0° X $\pm$ 0.5 XX $\pm$ 0.3	DRAWN: JPW 7/22/2024	NAME: JPW DATE: 7/22/2024
INTERPRET GEOMETRIC TOLERANCING PER: ASME Y14.5M	CHECKED: [ ] ENG APPR: [ ] MEG APPR: [ ] Q.A. [ ] COMMENTS: [ ]	
FINISH: [ ] DO NOT SCALE		

**NORTHERN LIGHTS**  
4420 14th AVE. N.W.  
Seattle, WA 98107  
(206) 789-3880  
www.northern-lights.com

TITLE: INSTALLATION DIMENSIONS  
C4105A4.6, 50HZ, GTA251AIHE

SIZE: PART NO. DWG. NO. REV  
**D SEE TABLE** D-5536

SCALE: 1:10 WEIGHT: SHEET 1 OF 1