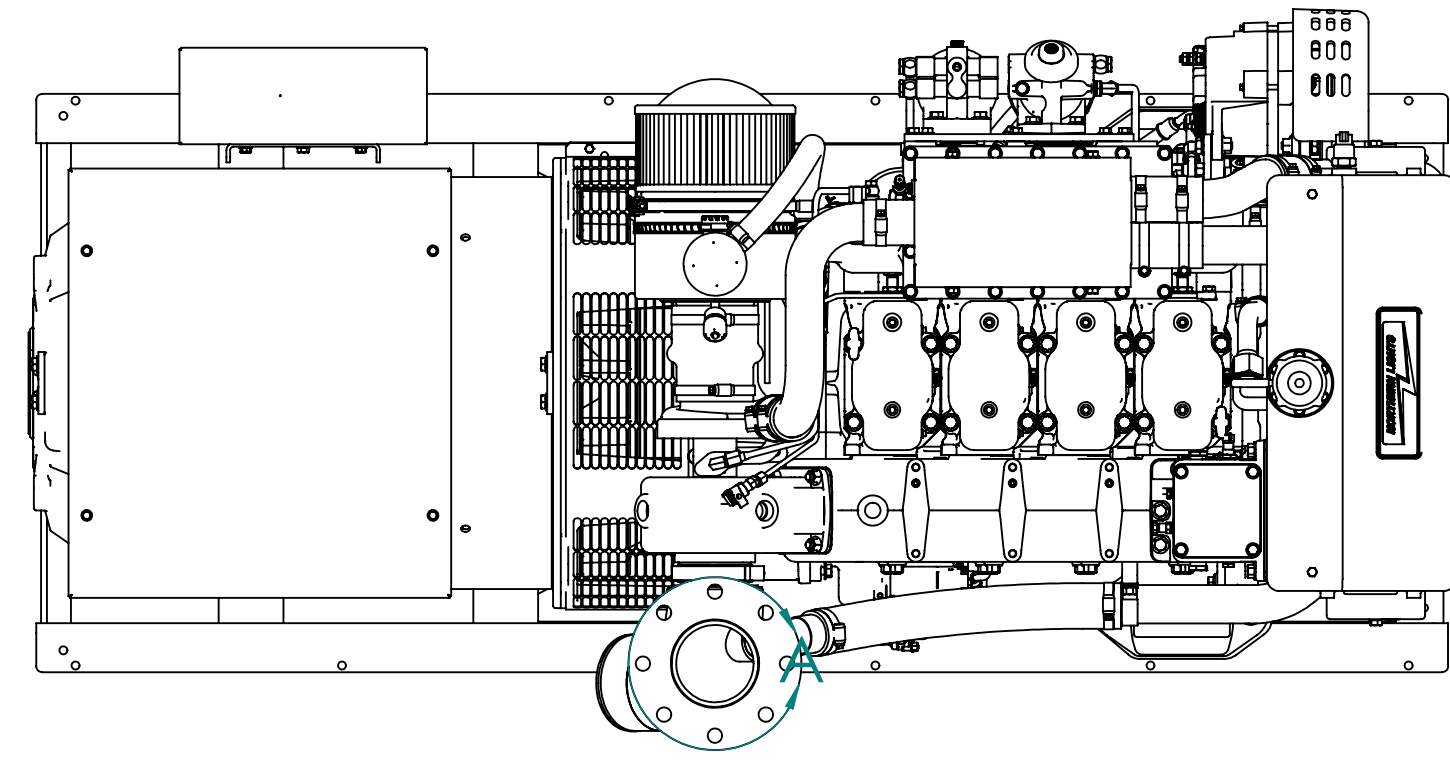


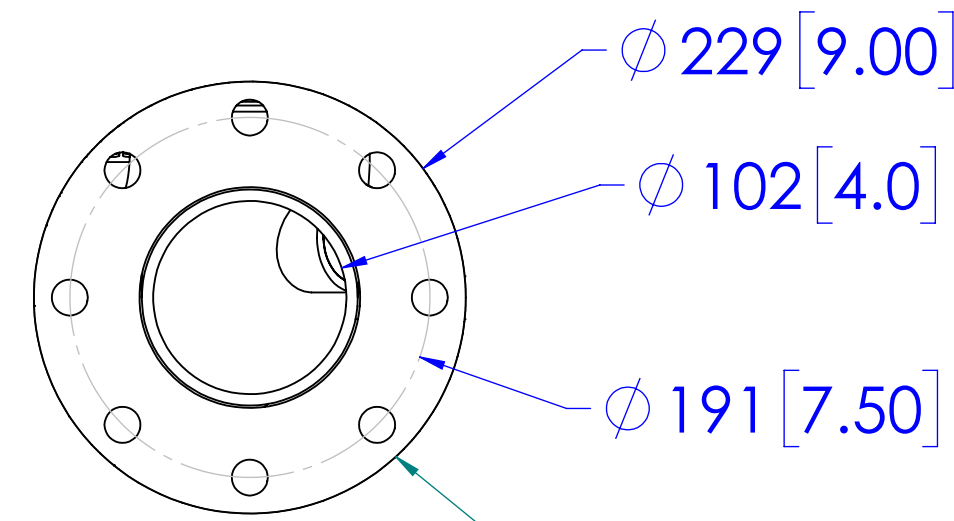
MODEL	DESCRIPTION	APPROX. WT. LBS [Kg]
M4105H1.1	160 KW. E @ 1800 RPM (60HZ), HEAT EXCHANGED	3150 [1429]

*NOTE: WEIGHT INCLUDES OIL, BUT NO COOLANT. VALUES ARE APPROXIMATIONS AND ARE SUBJECT TO CHANGE. PLEASE CONTACT NLI TO BE SURE YOU HAVE THE LATEST REVISION.

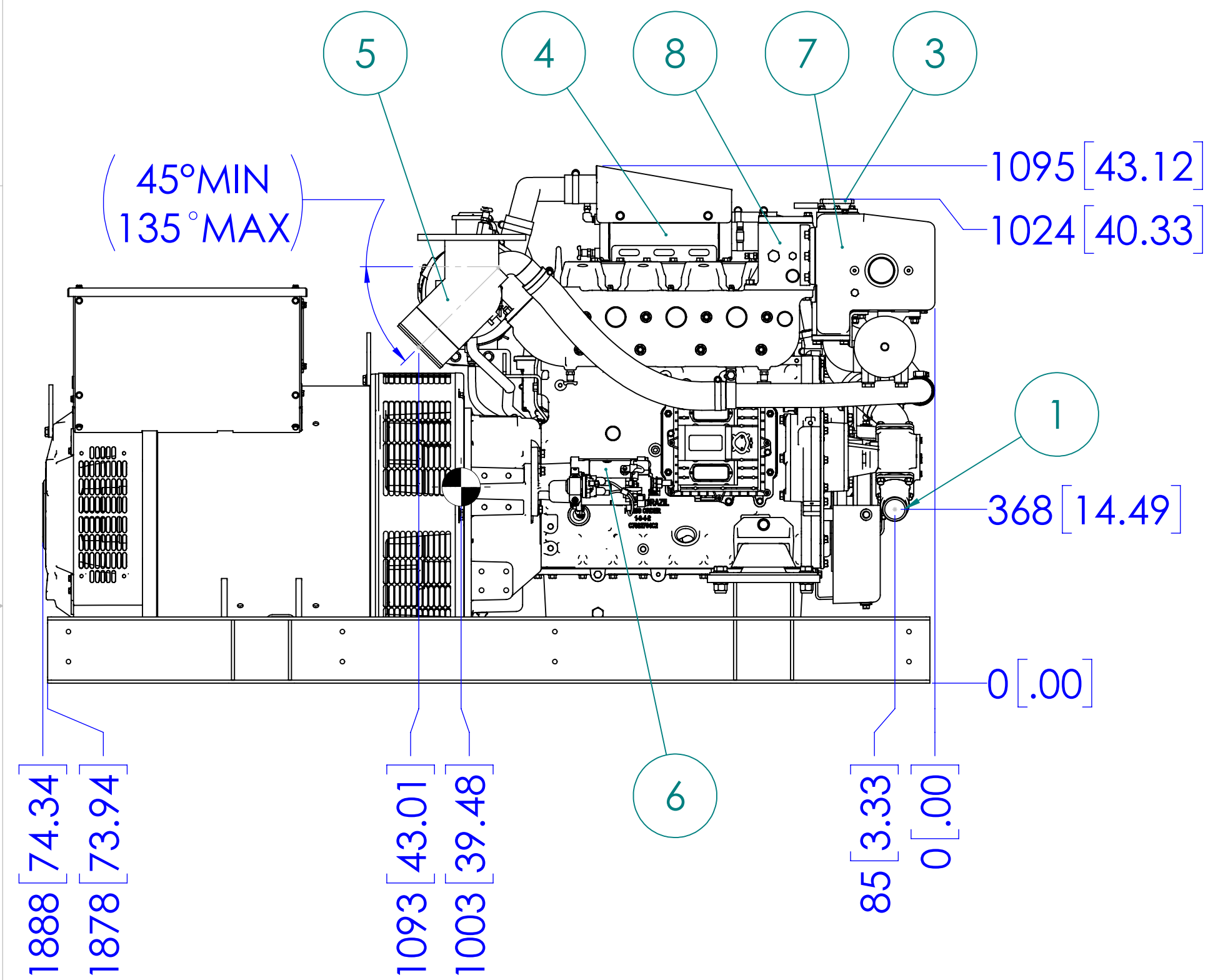
ITEM	DESCRIPTION	ITEM	DESCRIPTION
1	SEAWATER INLET Ø 2.0 H.B.	14	ENGINE OIL FILL
2	HEAT EXCHANGER	15	FUEL RETURN PORT (3/8" NPT)
3	COOLANT FILL	16	FUEL SUPPLY PORT (3/8" NPT)
4	AFTERCOOLER	17	OIL DRAIN PORT (1/2" NPT)
5	OPTIONAL WET EXHAUST ELBOW	18	ALTERNATOR
6	ELECTRIC STARTER MOTOR	19	OPTIONAL DRY EXHAUST ELBOW
7	EXPANSION TANK	20	
8	THERMOSTAT HOUSING	21	
9	FUEL/WATER SEPERATOR	22	
10	FINAL FUEL FILTER	23	
11	OIL FILTER	24	
12	AIR FILTER & COALESCING FILTER	25	
13	ENGINE OIL DIPSTICK	26	



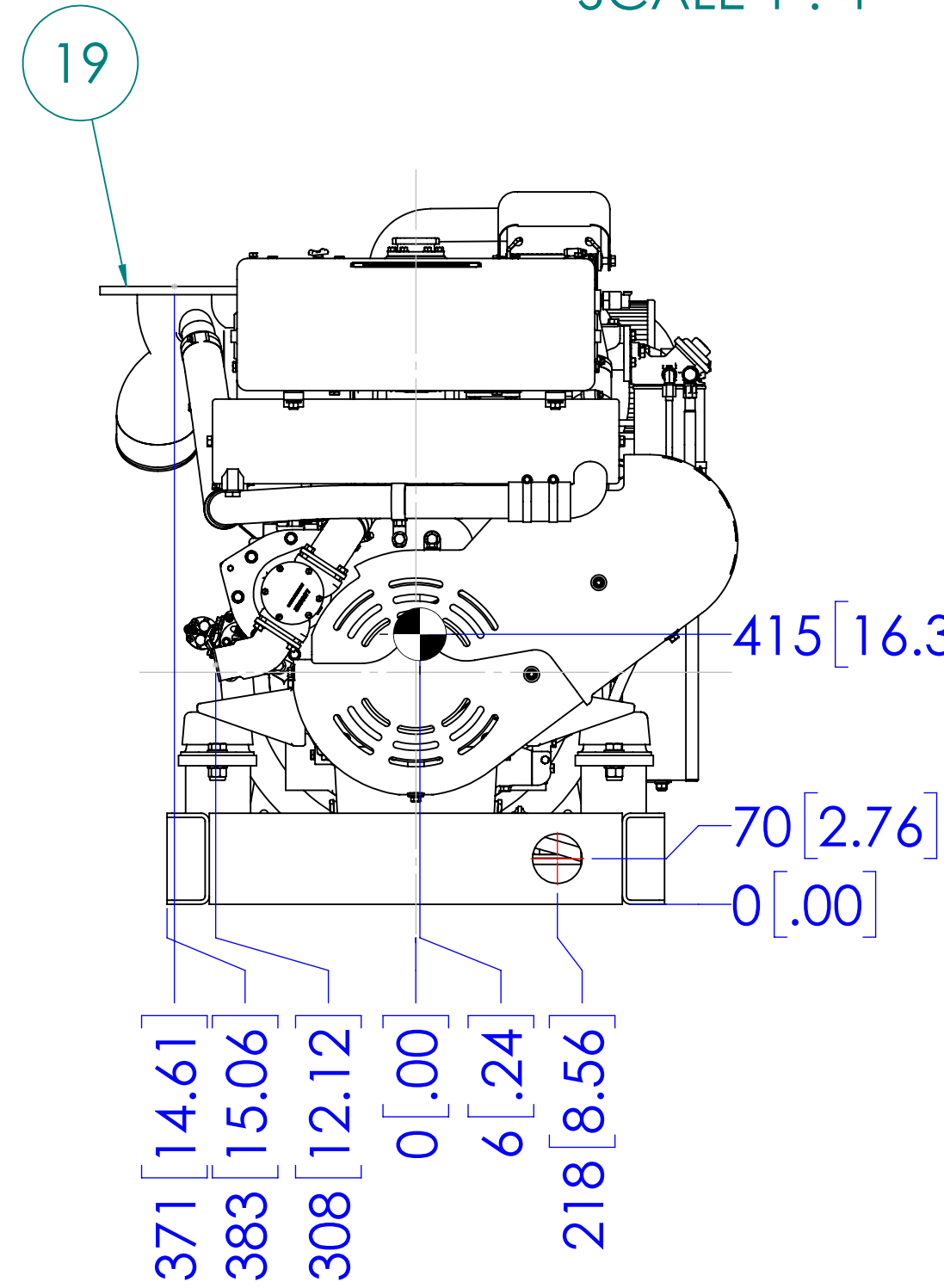
TOP



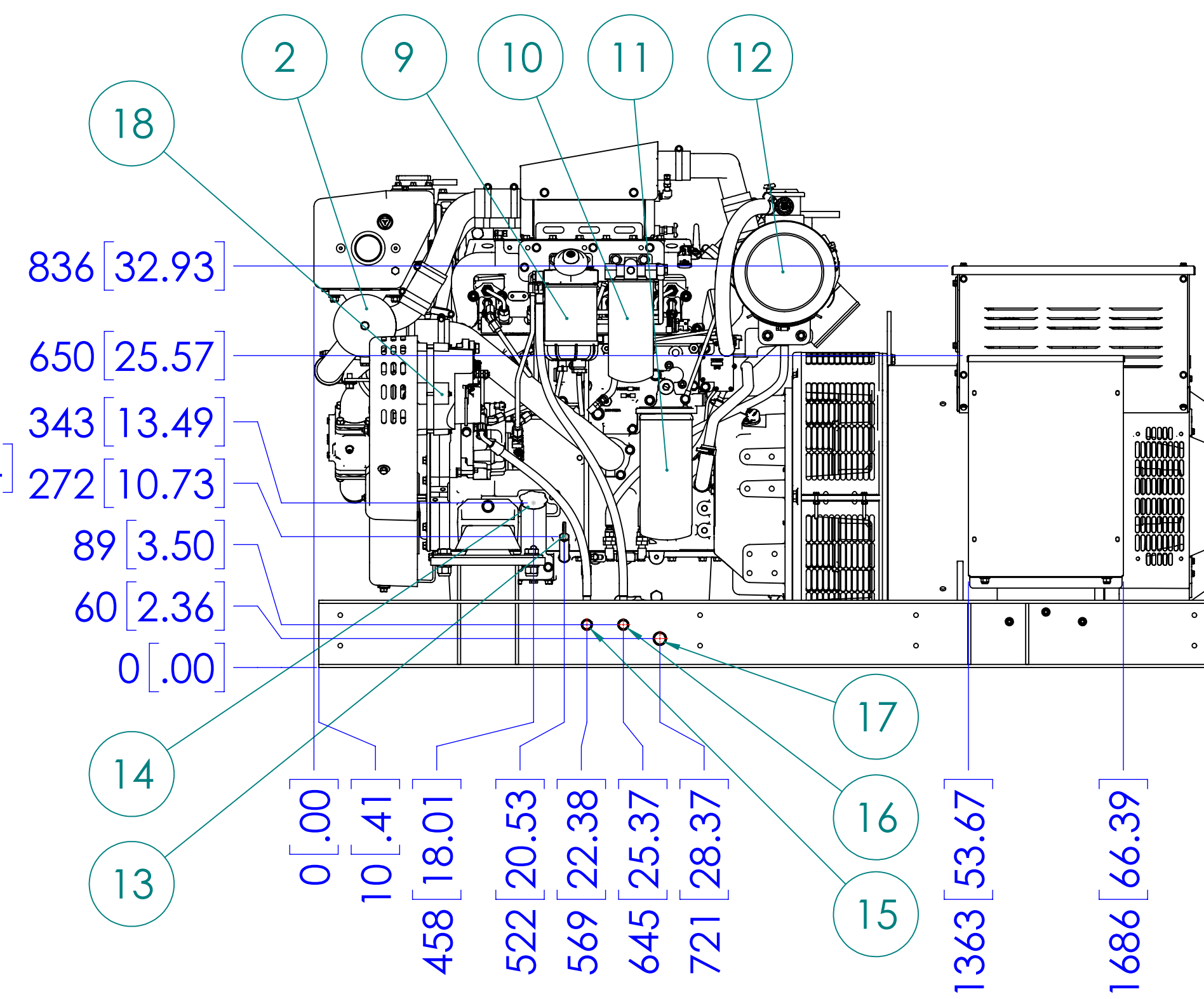
DETAIL A
SCALE 1 : 4
ANSI 4" 150# FLANGE
8x Ø 0.75" THRU HOLES



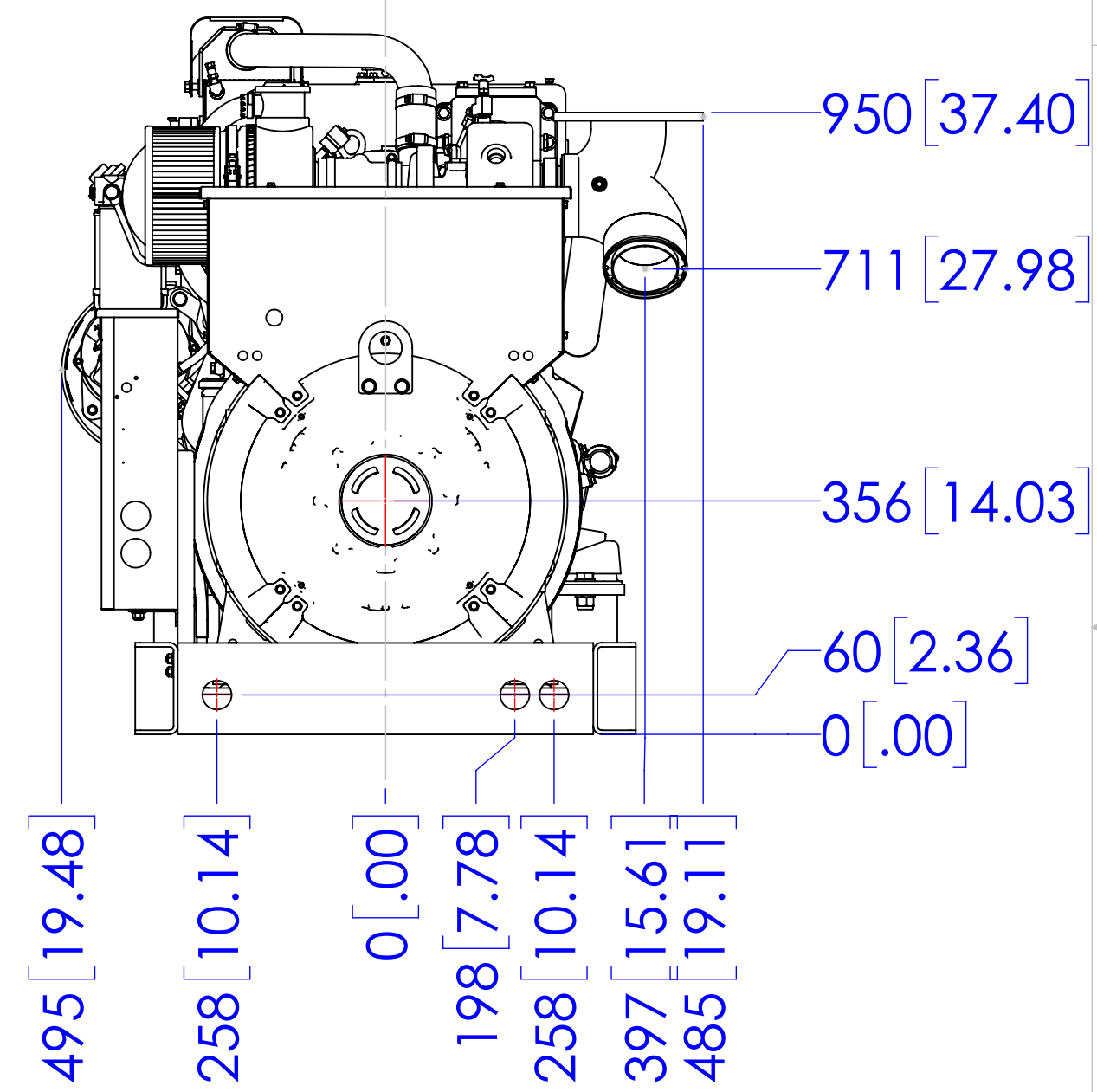
LEFT SIDE



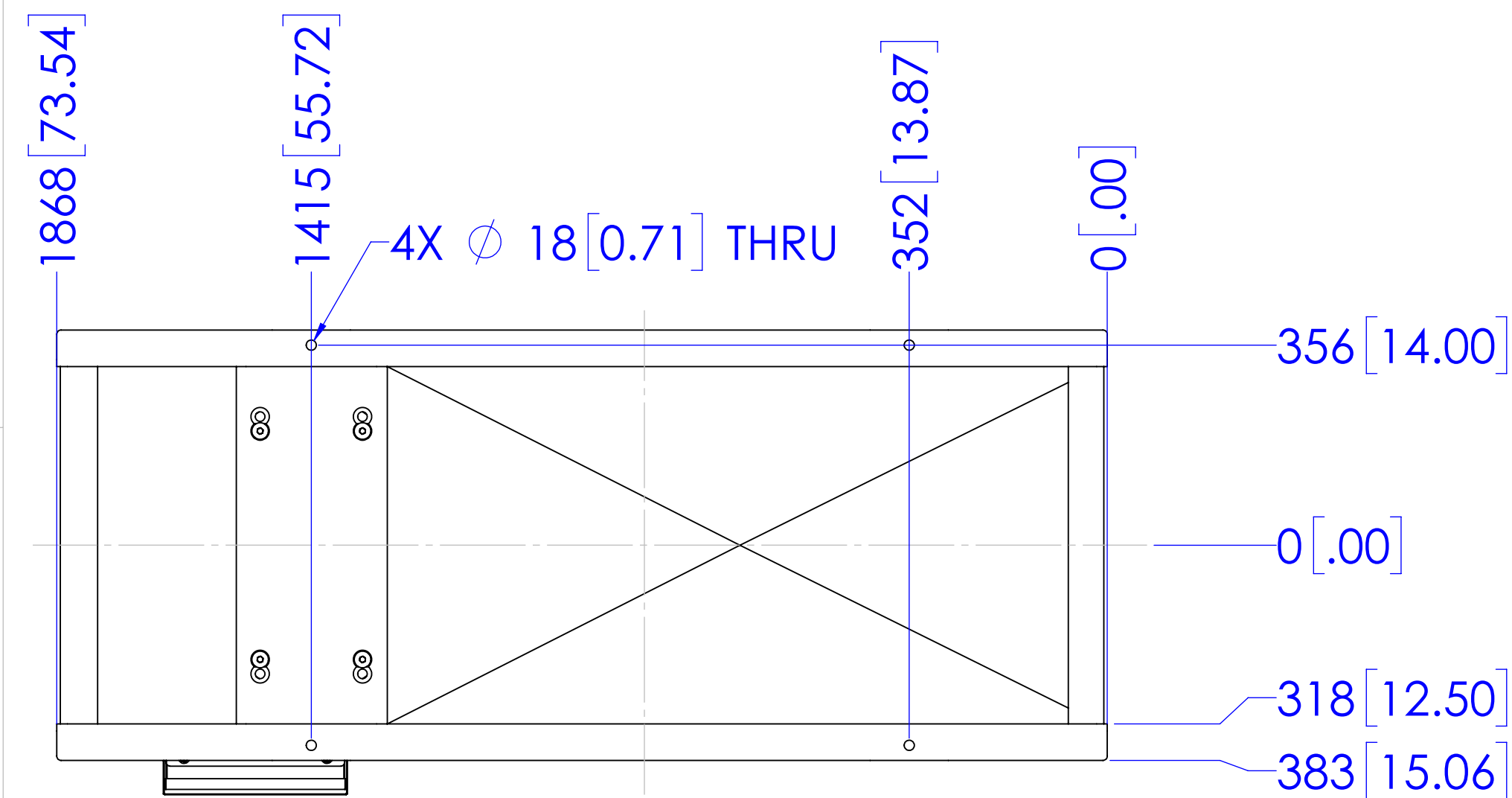
FRONT



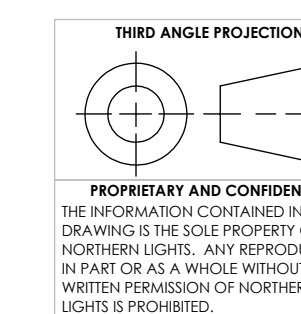
SERVICE SIDE



REAR



MOUNTING



UNLESS OTHERWISE SPECIFIED: DIMENSIONS ARE IN MILLIMETERS TOLERANCES: ANGULAR: MACH ± 0.5° BEND ± 1.0° X ± 0.5 XX ± 0.3 INTERPRET GEOMETRIC TOLERANCING PER ASME Y14.5M MATERIAL: FINISH: DO NOT SCALE	DRAWN: JPW CHECKED: ENG APPR.: MEG APPR.: G.A.: COMMENTS:	NAME: JPW DATE: 7/18/2024
---	--	------------------------------

NORTHERN LIGHTS
4420 14th AVE. N.W.
Seattle, WA 98107
(206) 789-3880
www.northern-lights.com

TITLE: INSTALLATION DIMENSIONS M4105H1.1, 60HZ, LSA 46.3 S4			
SIZE: D	PART NO.: SEE TABLE	DWG. NO.: D-5567	REV:
SCALE: 1:10	WEIGHT:	SHEET 1 OF 1	