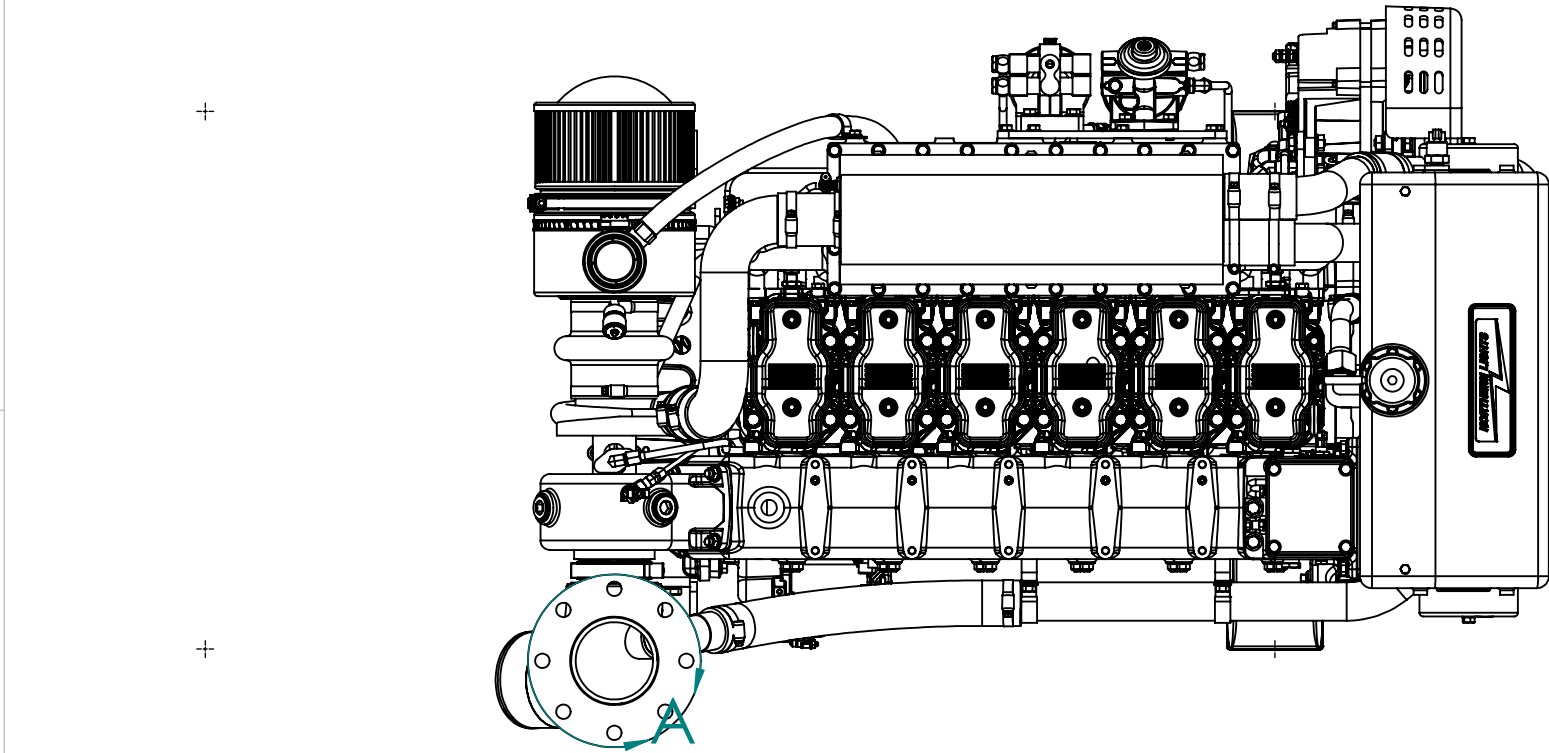


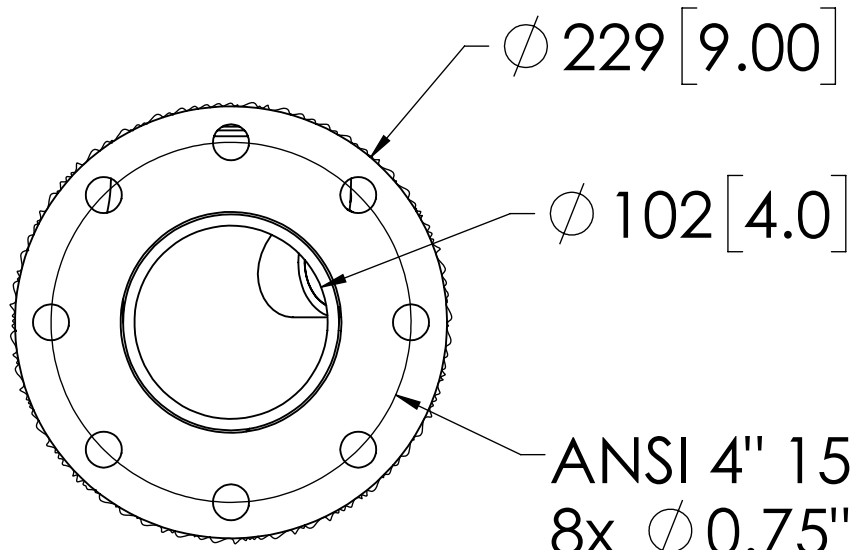
MODEL	DESCRIPTION	WEIGHT - LBS [KG]
L6105H1	425HP(317KW) @ 2500RPM, HEAT EXCHANGED	1735 [787]

\*NOTE: WEIGHTS INCLUDE OIL, BUT NO COOLANT. WEIGHT DOES NOT INCLUDE VIBRATION ISOLATORS. VALUES ARE APPROXIMATIONS AND ARE SUBJECT TO CHANGE. PLEASE CONTACT NLI TO BE SURE YOU HAVE THE MOST CURRENT REVISION.

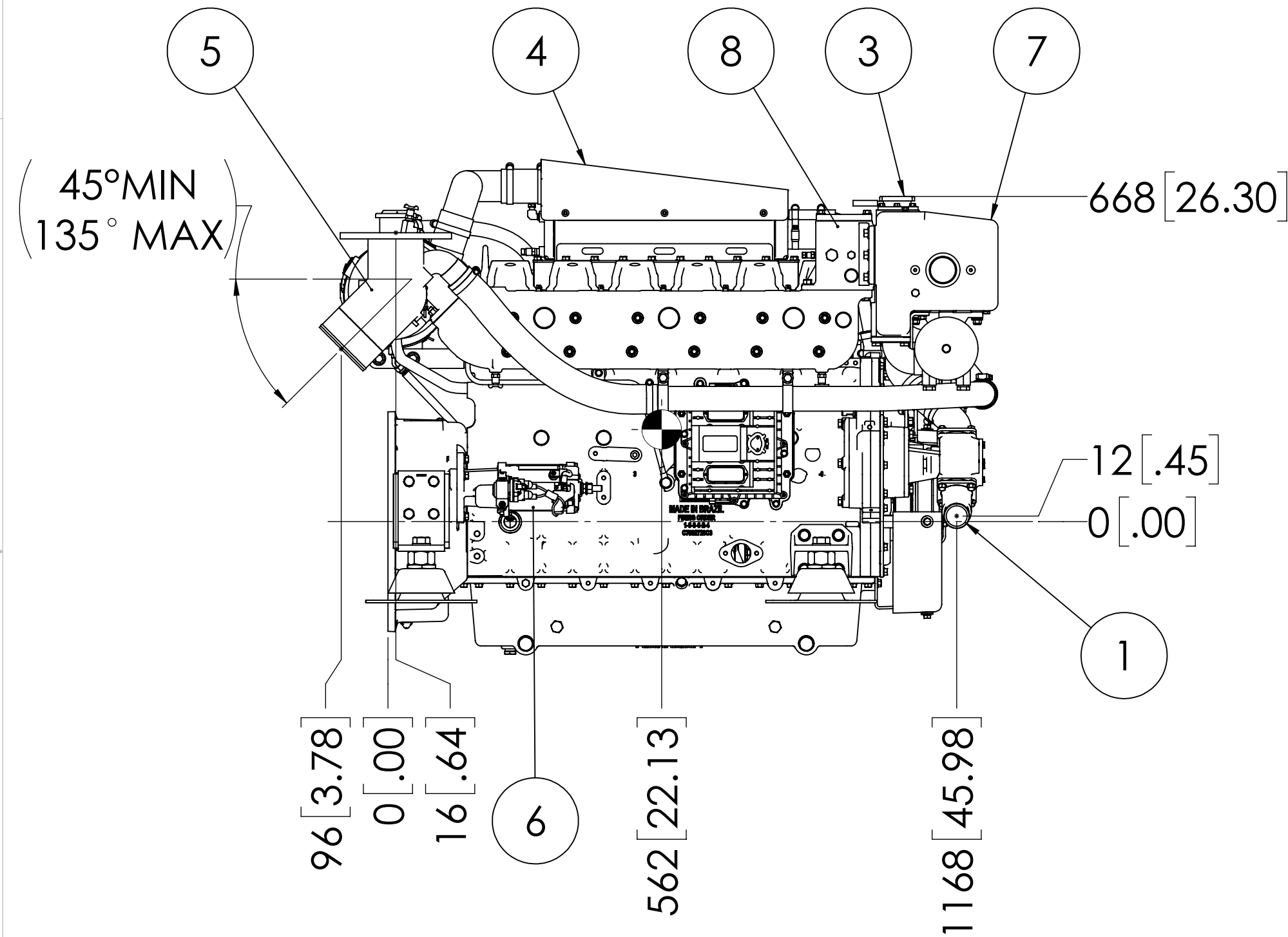
ITEM	DESCRIPTION	ITEM	DESCRIPTION
1	SEA WATER INLET Ø 51 [2.0] H.B.	14	ENGINE OIL FILL
2	HEAT EXCHANGER	15	FUEL RETURN PORT 3/8" NPT
3	COOLANT FILL	16	FUEL SUPPLY PORT 3/8" NPT
4	AFTERCOOLER	17	ENGINE OIL DRAIN PORT 1/2" NPT
5	WET EXHAUST ELBOW Ø 127 [5.0]	18	ALTERNATOR
6	ELECTRIC STARTER MOTOR	19	VIBRATION MOUNTS (OPTIONAL)
7	EXPANSION TANK	20	DRY EXHAUST ELBOW (OPTIONAL)
8	THERMOSTAT HOUSING	21	
9	FUEL/WATER SEPARATOR	22	
10	FINAL FUEL FILTER	23	
11	OIL FILTER	24	
12	AIR FILTER & COALESCING FILTER	25	
13	ENGINE OIL DIPSTICK	26	



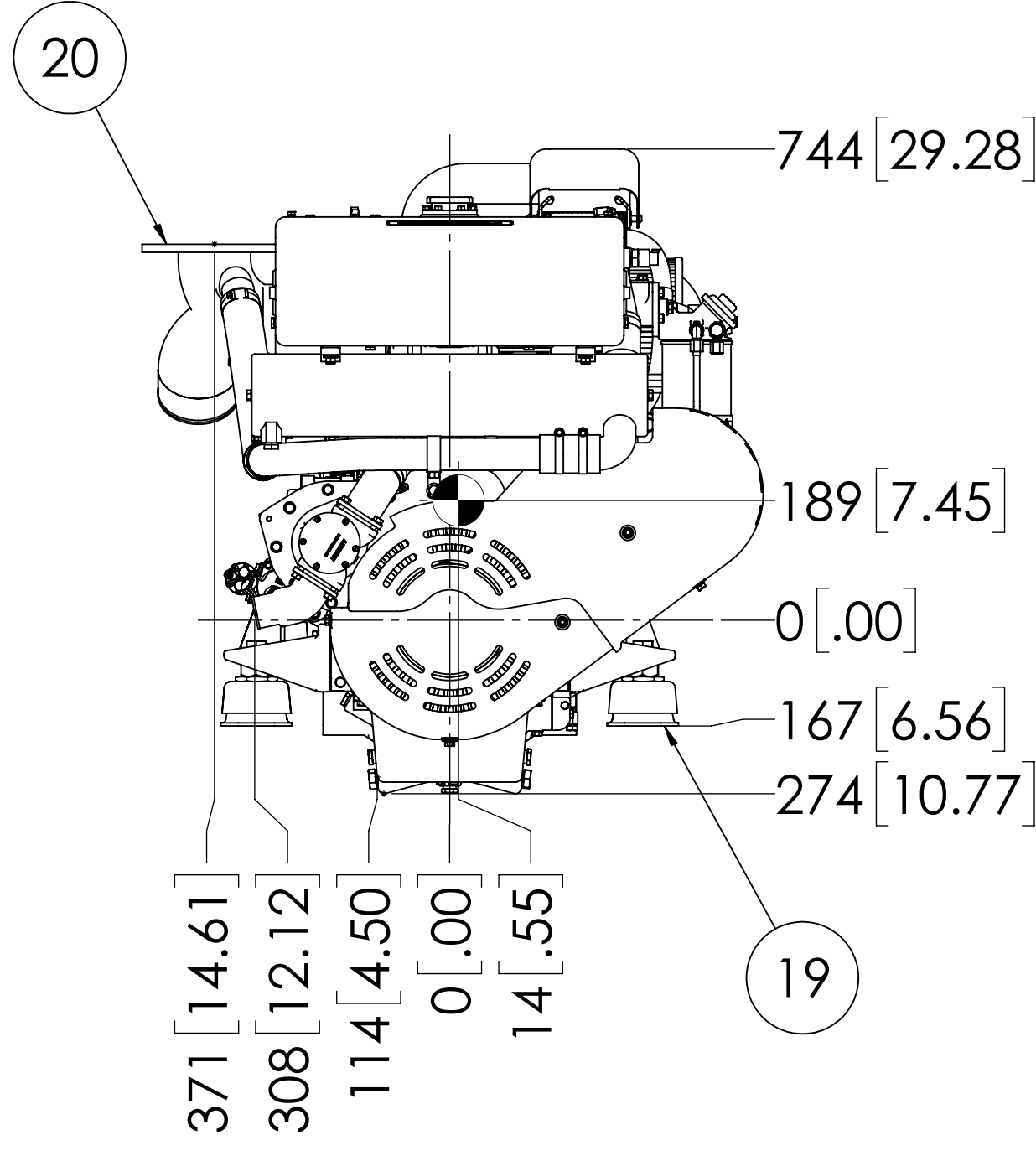
TOP



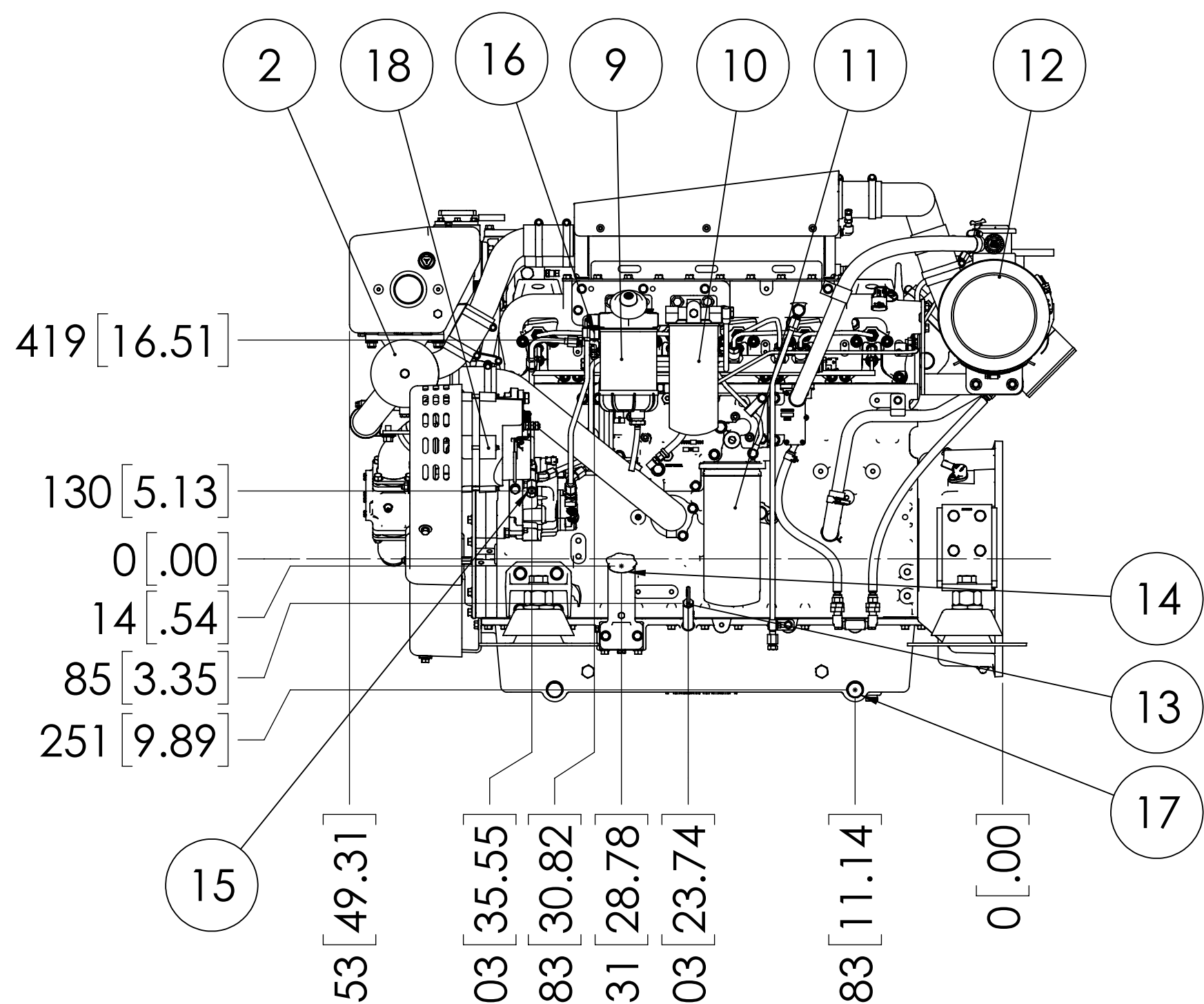
DETAIL A  
OPTIONAL DRY EXHAUST FLANGE  
SCALE 1 : 4



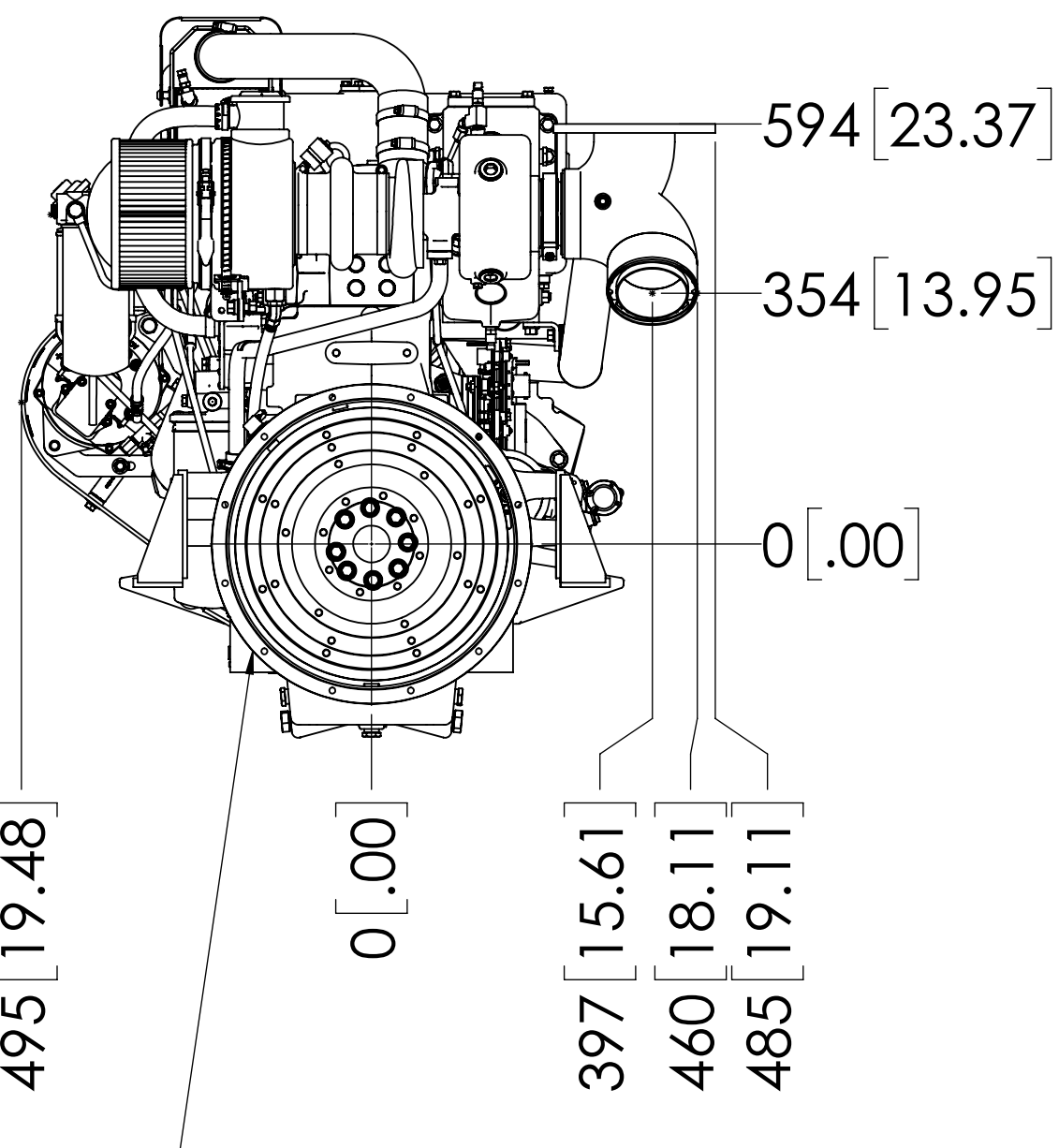
LEFT SIDE



FRONT

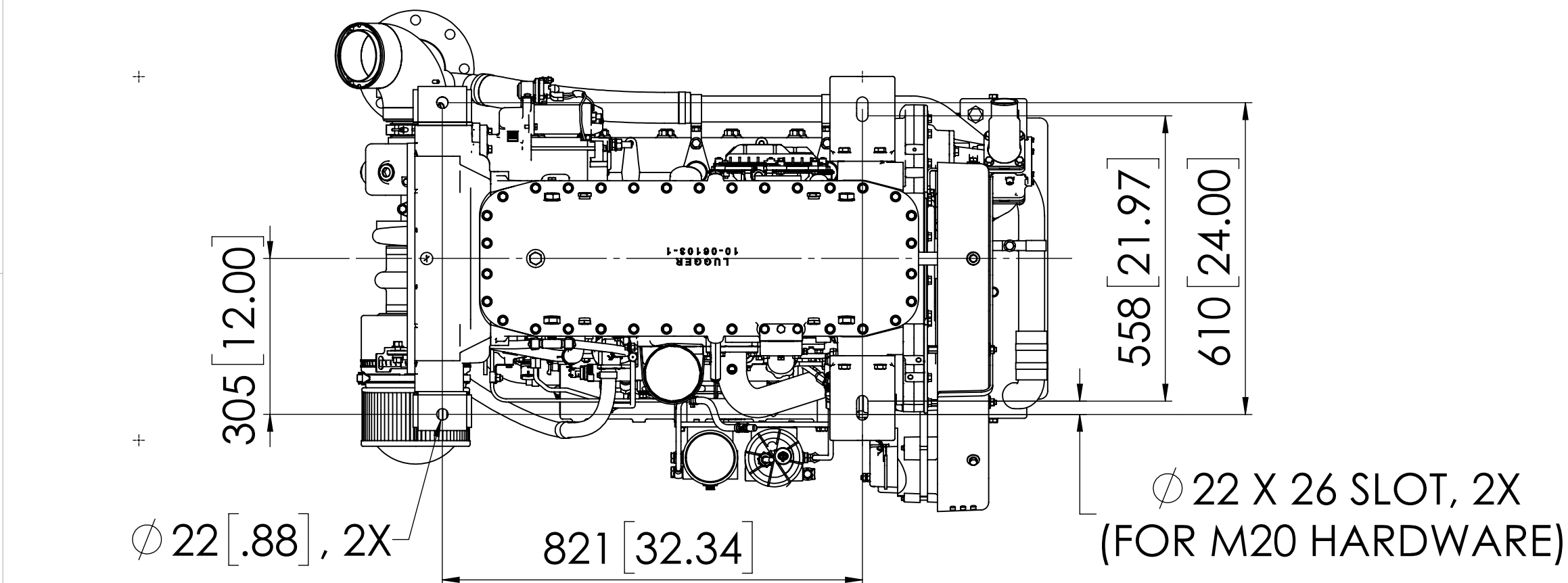


SERVICE SIDE

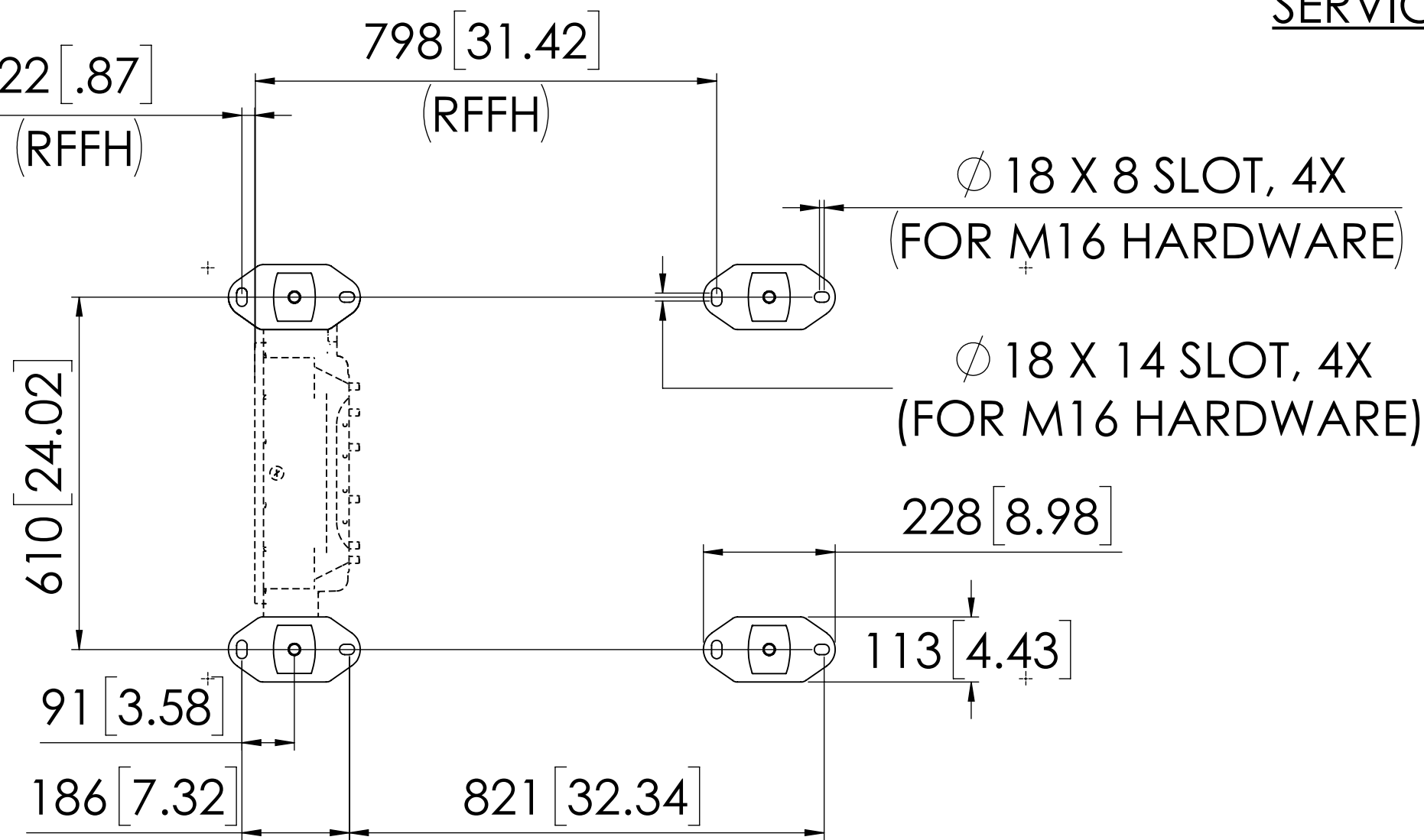


REAR

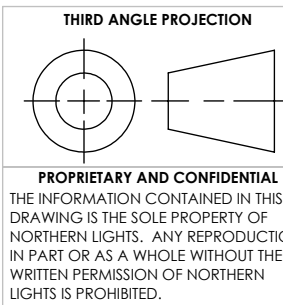
SAE #3  
11.5" FLYWHEEL



MOUNTING (W/O VIBRATION ISOLATION)



MOUNTING (W/ VIBRATION ISOLATION)



UNLESS OTHERWISE SPECIFIED:  
DIMENSIONS ARE IN MILLIMETERS  
TOLERANCES:  
ANGULAR: MACH ± 0.5° BEND ± 1.0°  
X ± 0.3  
XX ± 0.3  
INTERPRET GEOMETRIC TOLERANCING PER: ASME Y14.5M  
MATERIAL:  
FINISH:  
DO NOT SCALE

DRAWN: JPW  
CHECKED: -  
ENG APPR: -  
MEG APPR: -  
Q.A. COMMENTS: -  
NAME: -  
DATE: 7/30/2024

4420 14th AVE. N.W.  
Seattle, WA 98107  
(206) 789-3880  
www.northern-lights.com

TITLE: INSTALLATION DIMENSIONS  
L6105H1

SIZE: D PART NO. SEE TABLE DWG. NO. D-5571 REV

SCALE: 1:10 WEIGHT: SHEET 1 OF 1