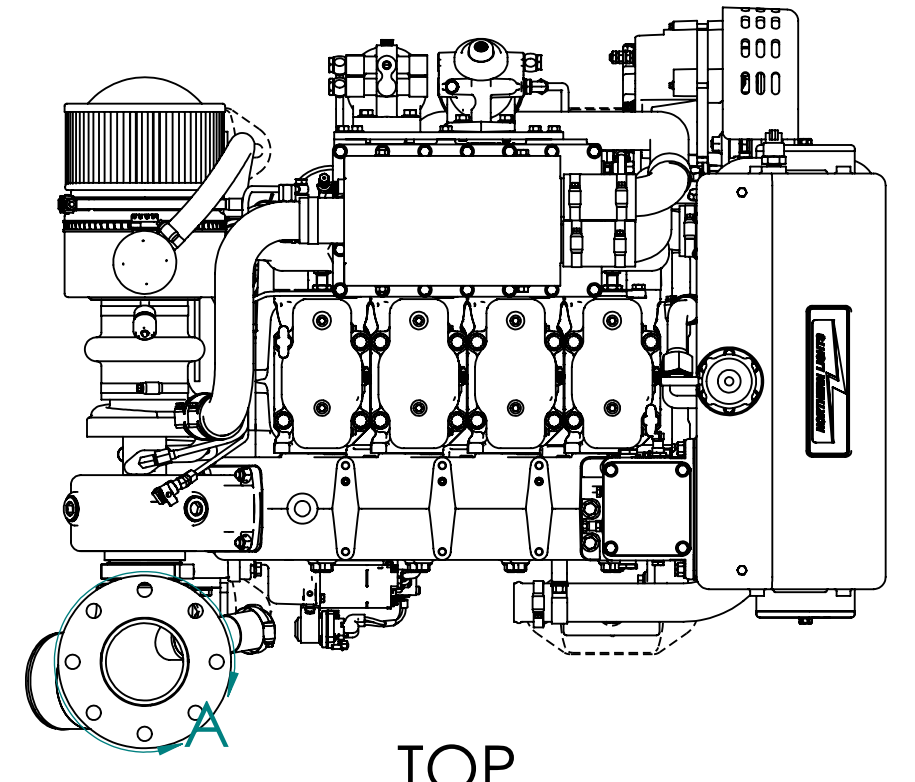


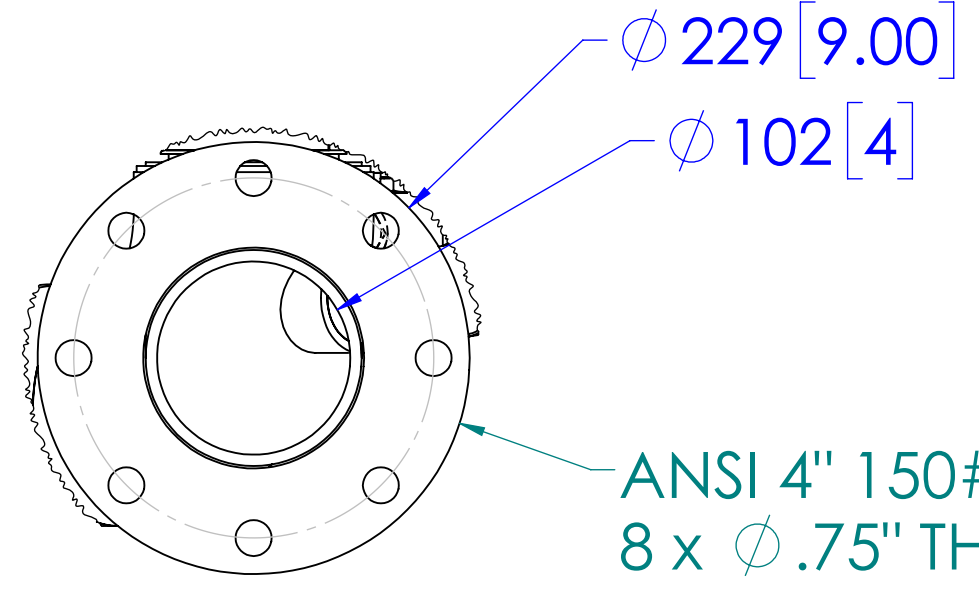
MODEL	DESCRIPTION	WEIGHT - LBS [KG]
L4105A1	174HP (130KW) @ 2100RPM, HEAT EXCHANGED	1390 [630]
L4105A2	220HP (164KW) @ 2250RPM, HEAT EXCHANGED	

\*NOTE: WEIGHTS INCLUDE OIL, BUT NO COOLANT. WEIGHT DOES NOT INCLUDE OPTIONAL VIBRATION ISOLATORS. VALUES ARE APPROXIMATIONS AND ARE SUBJECT TO CHANGE. PLEASE CONTACT NLI TO BE SURE YOU HAVE THE MOST CURRENT REVISION.

ITEM	DESCRIPTION	ITEM	DESCRIPTION
1	SEA WATER INLET $\phi$ 51 [2.0] H.B.	14	ENGINE OIL FILL
2	HEAT EXCHANGER	15	FUEL RETURN PORT 3/8"-37T
3	COOLANT FILL	16	FUEL SUPPLY PORT 3/8"-37T
4	AFTERCOOLER	17	ENGINE OIL DRAIN PORT M22X1.5
5	WET EXHAUST ELBOW $\phi$ 127 [5.0]	18	ALTERNATOR
6	ELECTRIC STARTER MOTOR	19	VIBRATION MOUNTS (OPTIONAL)
7	EXPANSION TANK	20	DRY EXHAUST ELBOW (OPTIONAL)
8	THERMOSTAT HOUSING	21	
9	FUEL/WATER SEPARATOR	22	
10	FINAL FUEL FILTER	23	
11	OIL FILTER	24	
12	AIR FILTER & COALESCING FILTER	25	
13	ENGINE OIL DIPSTICK	26	

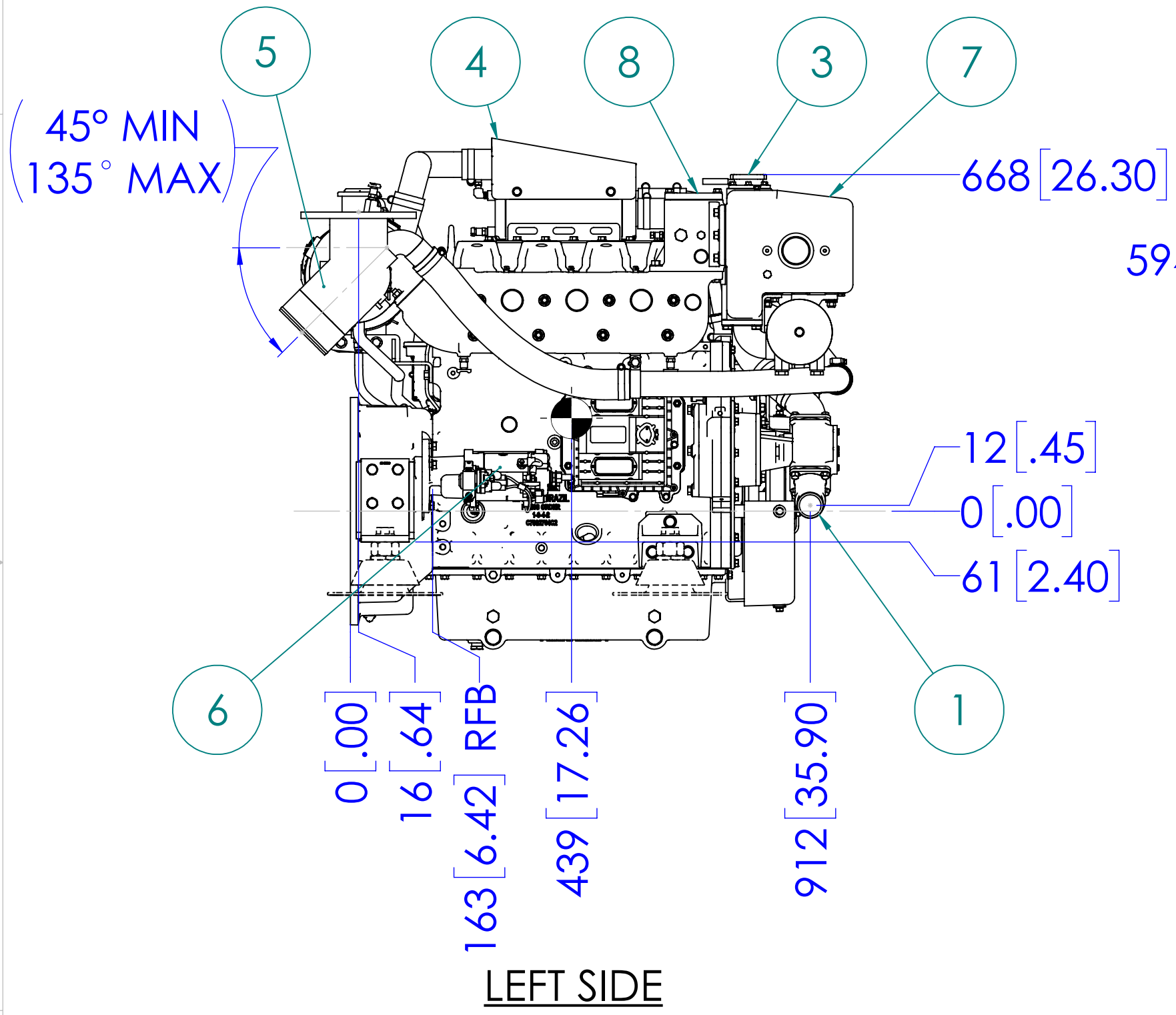


TOP

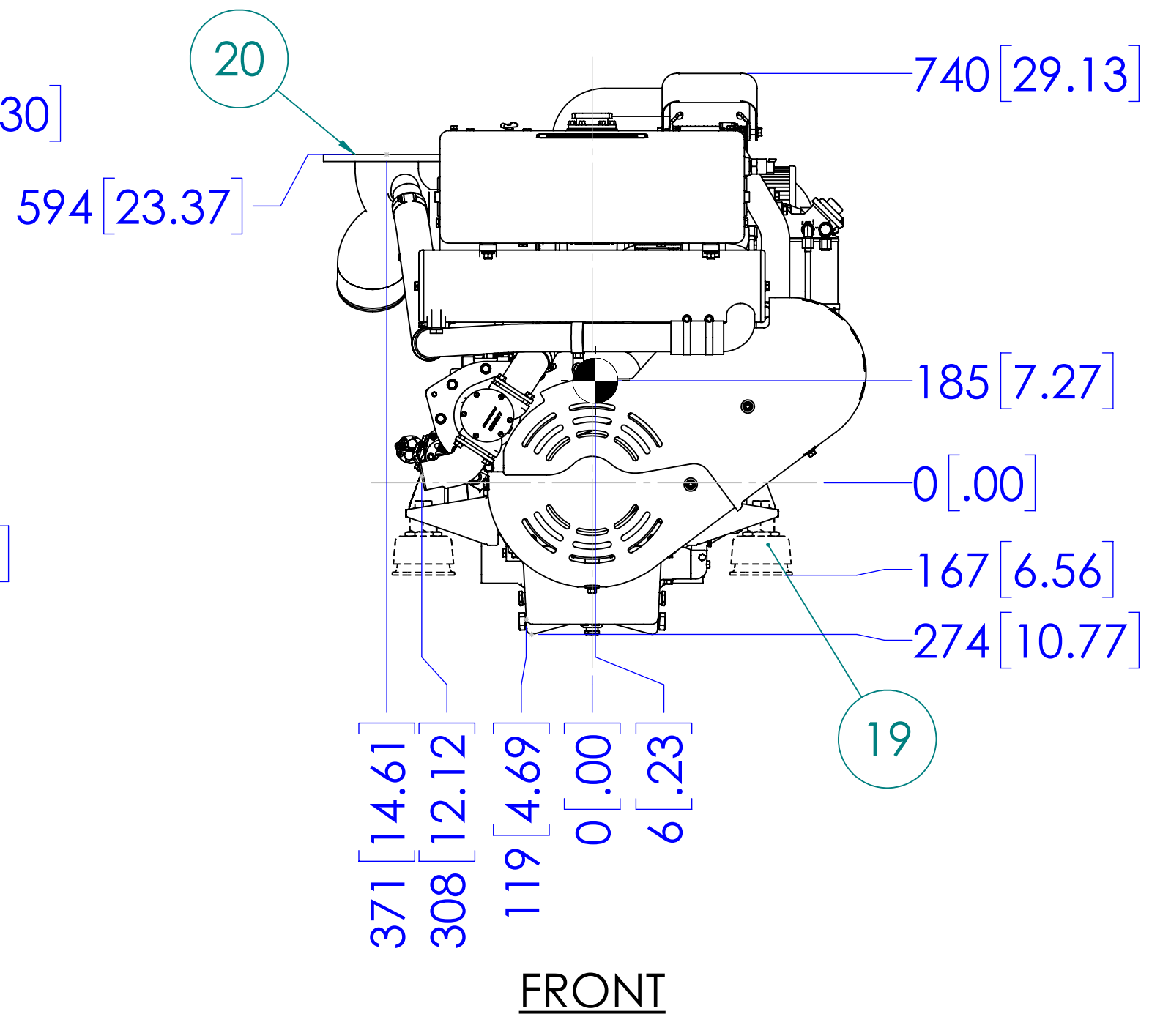


DETAIL A  
OPTIONAL DRY EXHAUST FLANGE  
SCALE 1 : 4

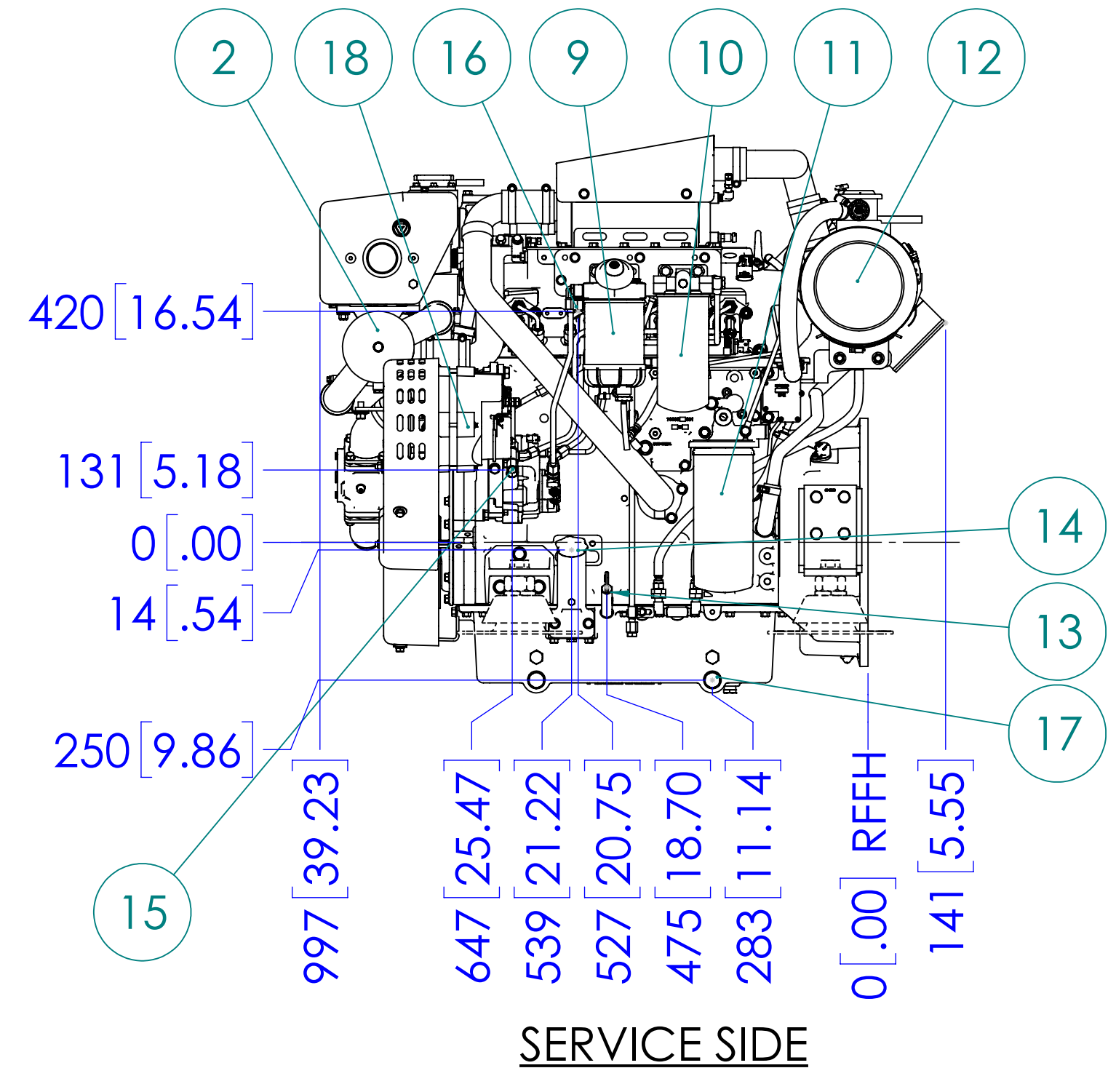
ANSI 4" 150# FLANGE  
8 x  $\phi$  .75" THRU HOLES  
ON 7.5" B.C.



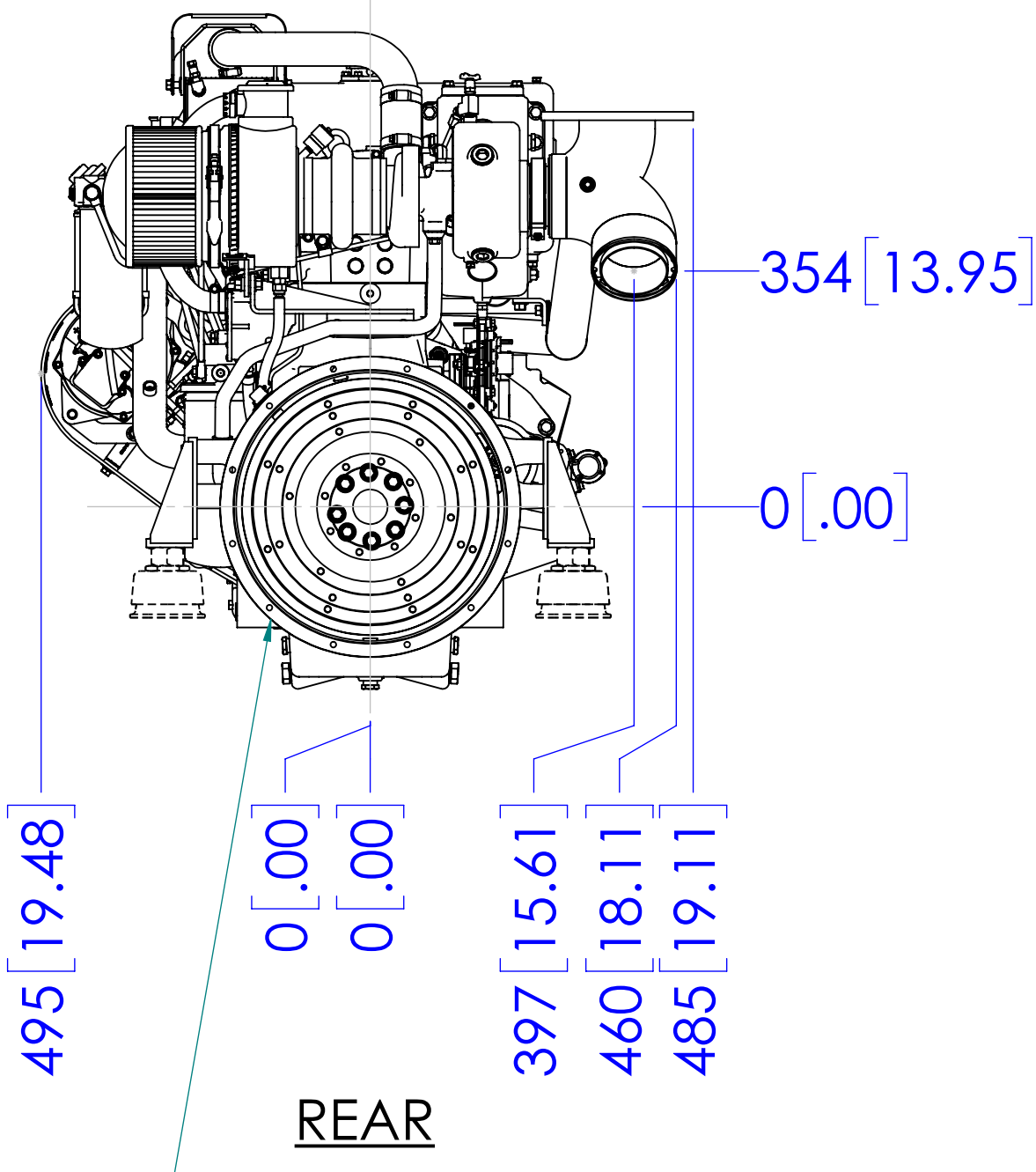
LEFT SIDE



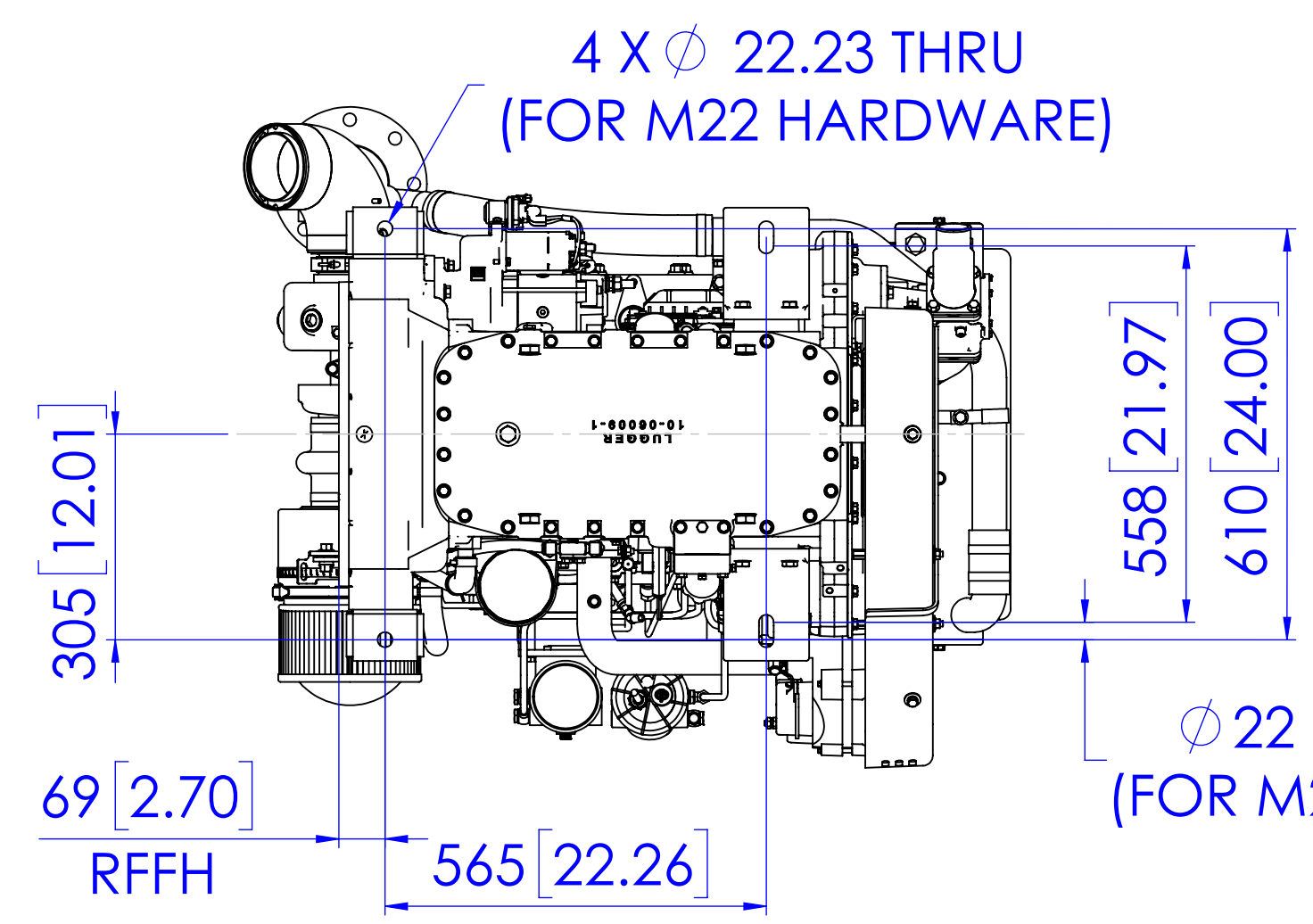
FRONT



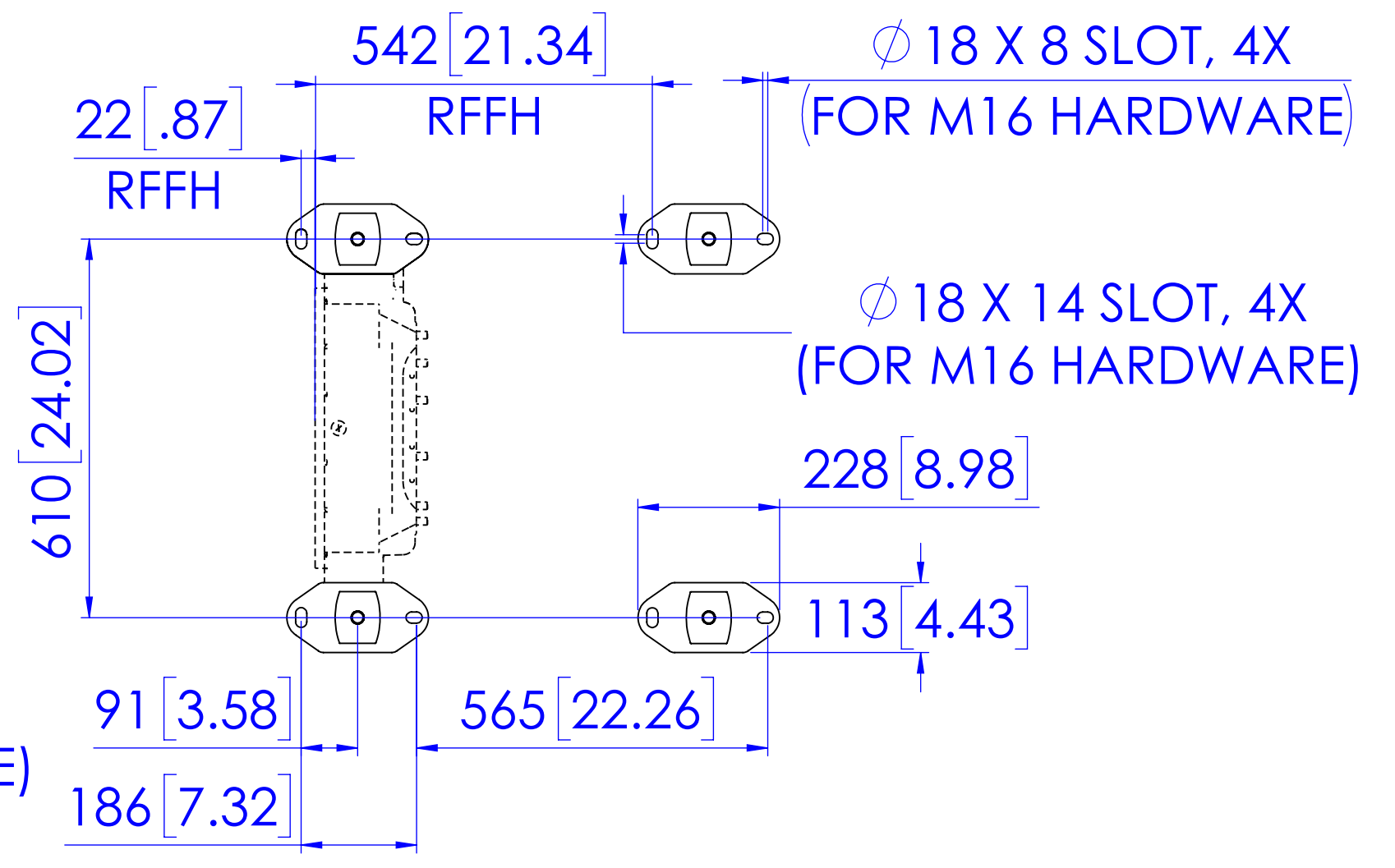
SERVICE SIDE



REAR

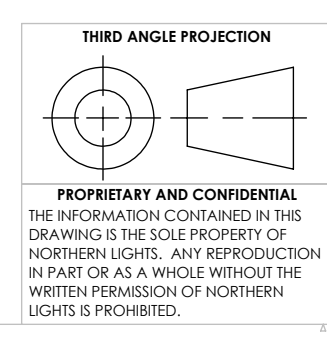


MOUNTING (W/O VIBRATION ISOLATION)



OPTIONAL VIBRATION ISOLATION FOOTPRINT

SAE #3  
11.5" FLYWHEEL



UNLESS OTHERWISE SPECIFIED:		NAME	DATE	
DIMENSIONS ARE IN MILLIMETERS		JPW	7/11/2024	
TOLERANCES:		CHECKED	MG	8/13/2024
ANGULAR: MACH $\pm$ 0.5° BEND $\pm$ 1.0°		ENG APPR.		
X $\pm$ 0.3		MFG APPR.		
XX $\pm$ 0.3		Q.A.		
INTERPRET GEOMETRIC TOLERANCING PER: ASME Y14.5M		COMMENTS:		
MATERIAL:				
FINISH:				
DO NOT SCALE				

**NORTHERN LIGHTS**  
4420 14th AVE. N.W.  
Seattle, WA 98107  
(206) 789-3880  
www.northern-lights.com

TITLE: **INSTALLATION DIMENSIONS L4105A1, L4105A2**

SIZE	PART NO.	DWG. NO.	REV
D	SEE TABLE	D-5577	

SCALE: 1:10      WEIGHT:      SHEET 1 OF 1