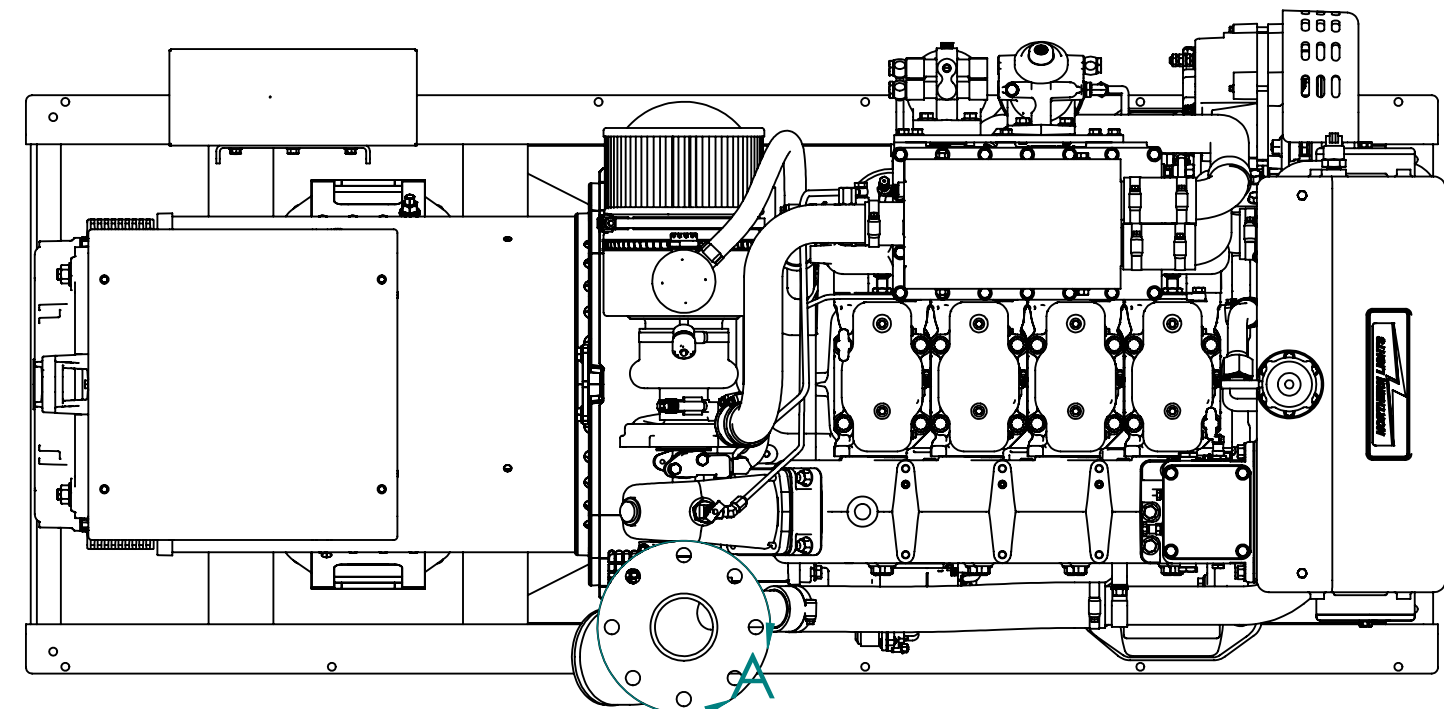
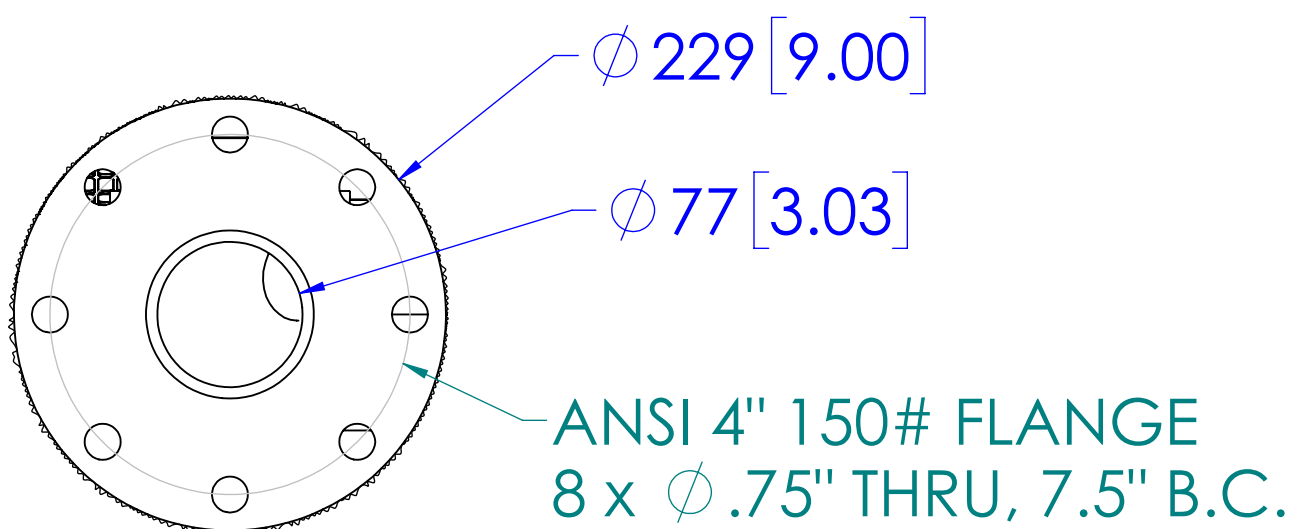


MODEL	DESCRIPTION	APPRX. WT. LBS [KG]
M4105A4.5	127KW.E @ 1500RPM (50Hz), HEAT EXCHANGED	2888 [1310]



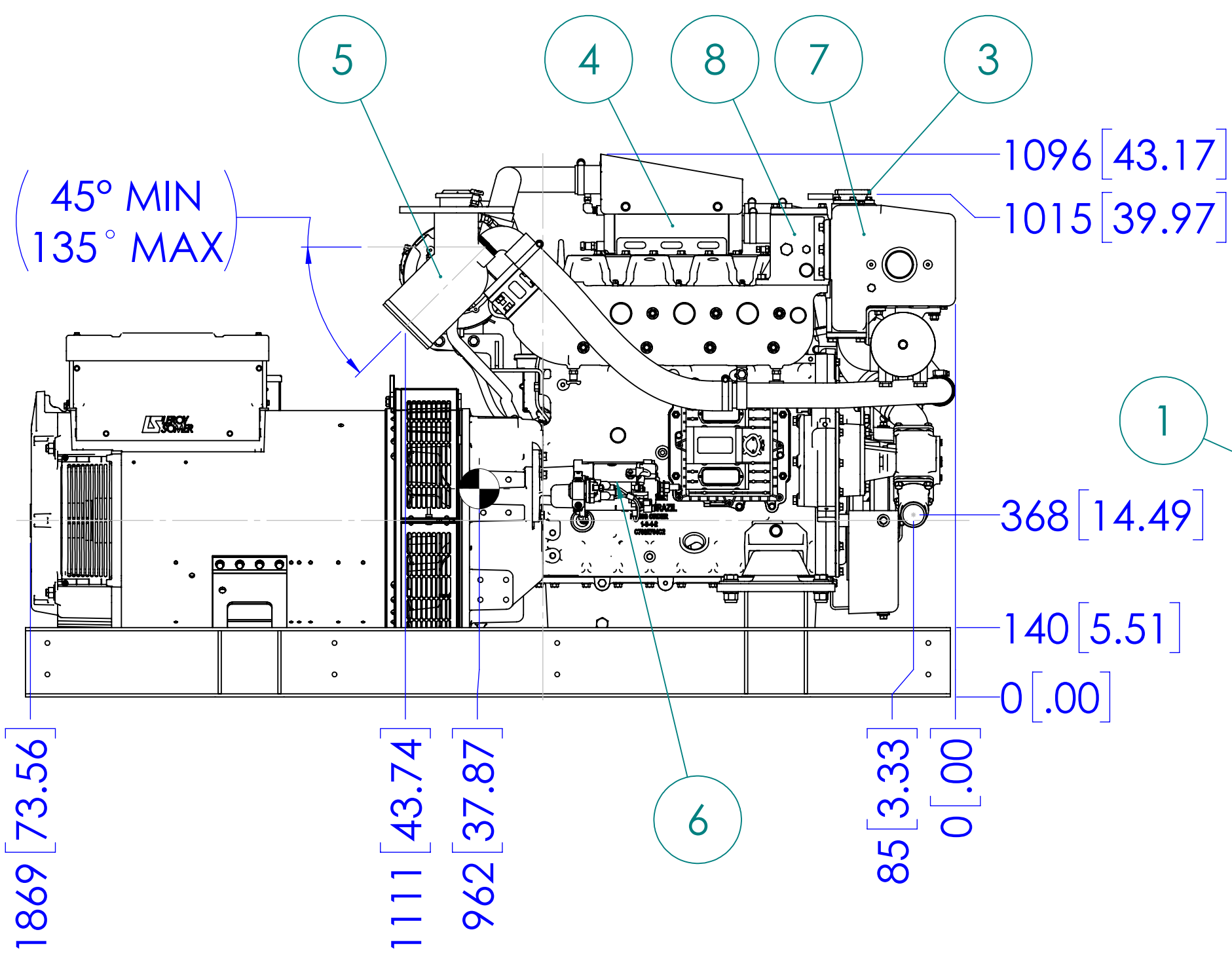
TOP

NOTE: WEIGHT INCLUDES OIL, BUT NO COOLANT. VALUES ARE APPROXIMATIONS AND ARE SUBJECT TO CHANGE. PLEASE CONTACT NLI TO BE SURE YOU HAVE THE LATEST REVISION.

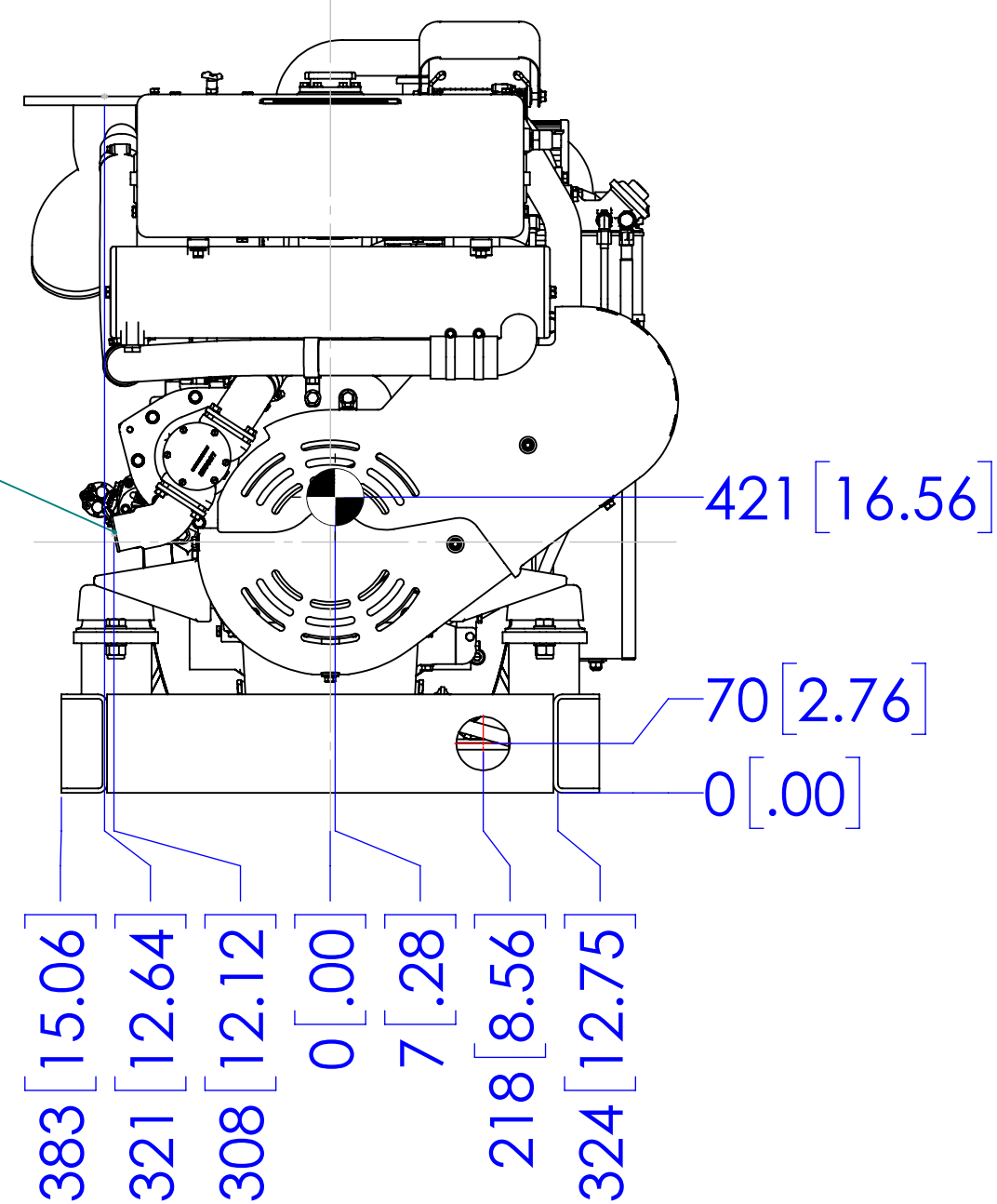


DETAIL A  
OPTIONAL DRY EXHAUST FLANGE  
SCALE 1 : 4

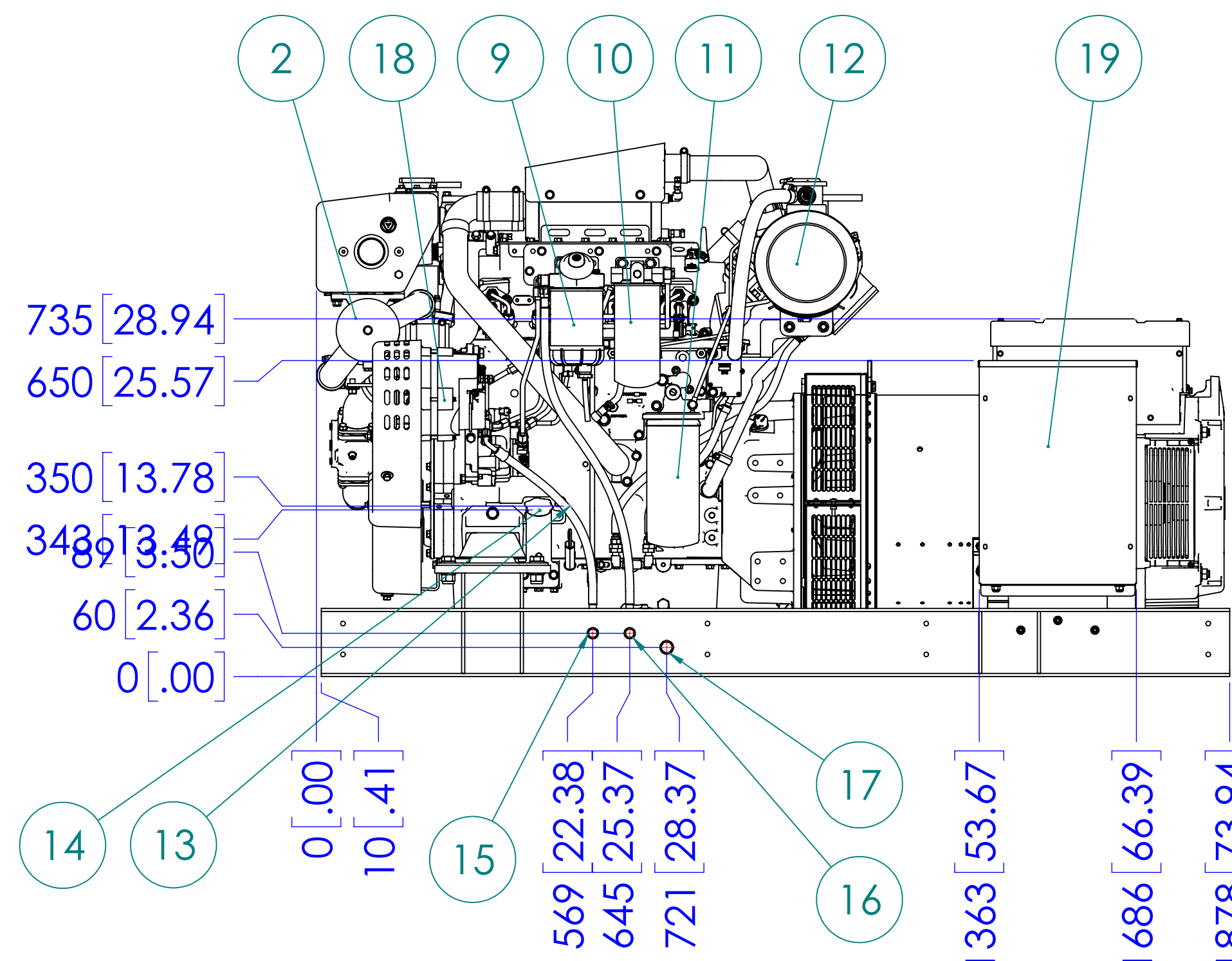
ITEM	DESCRIPTION	ITEM	DESCRIPTION
1	SEAWATER INLET ( $\phi$ 2.0 H.B.)	14	ENGINE OIL FILL
2	HEAT EXCHANGER	15	FUEL RETURN PORT (3/8" NPT)
3	COOLANT FILL	16	FUEL SUPPLY PORT (3/8" NPT)
4	AFTERCOOLER	17	OIL DRAIN PORT (1/2" NPT)
5	OPTIONAL WET EXHAUST ELBOW ( $\phi$ 5" H.B)	18	ALTERNATOR
6	ELECTRIC STARTER MOTOR (12V STD/ 24V OPT)	19	DC JUNCTION BOX
7	EXPANSION TANK	20	
8	THERMOSTAT HOUSING	21	
9	FUEL/WATER SEPERATOR	22	
10	FINAL FUEL FILTER	23	
11	OIL FILTER	24	
12	AIR FILTER & COALESCING FILTER	25	
13	ENGINE OIL DIPSTICK	26	



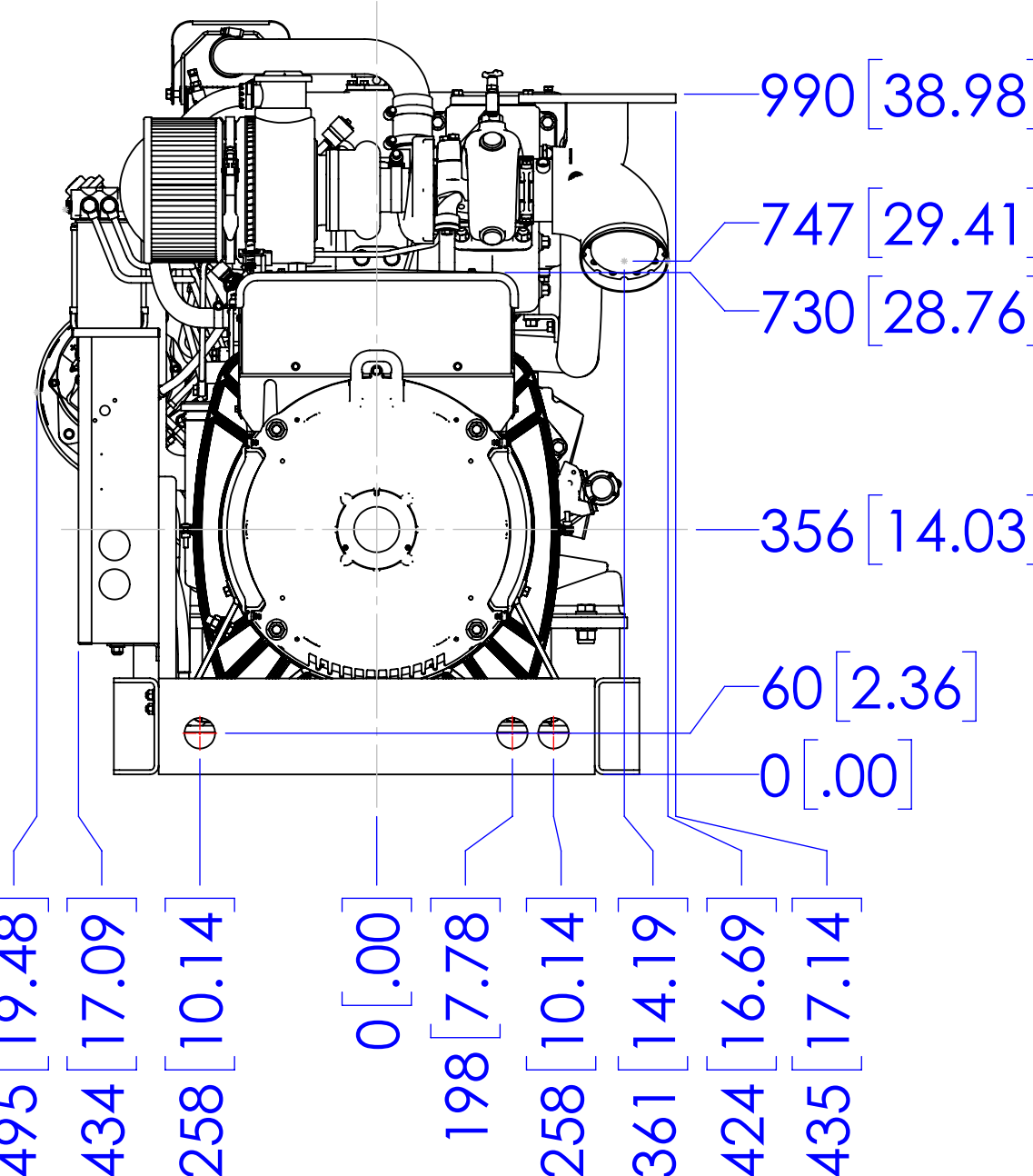
LEFT SIDE



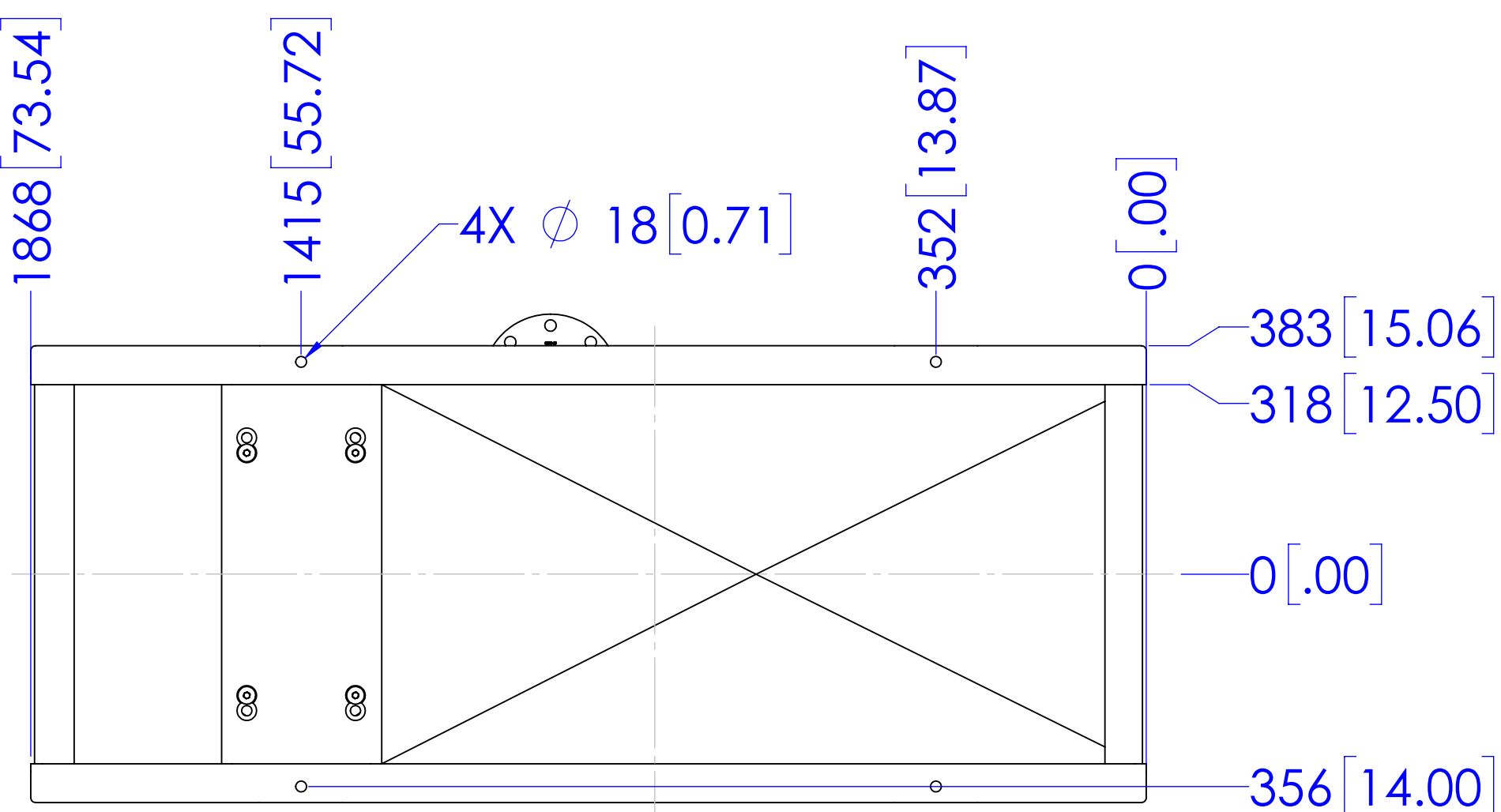
FRONT



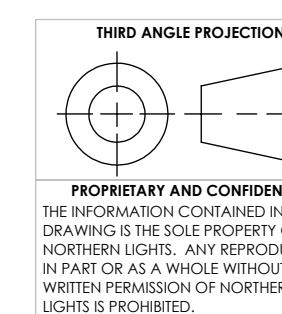
SERVICE SIDE



REAR



MOUNTING



PROPRIETARY AND CONFIDENTIAL  
THE INFORMATION CONTAINED IN THIS DRAWING IS THE SOLE PROPERTY OF NORTHERN LIGHTS. ANY REPRODUCTION IN PART OR AS A WHOLE WITHOUT THE WRITTEN PERMISSION OF NORTHERN LIGHTS IS PROHIBITED.

UNLESS OTHERWISE SPECIFIED: DIMENSIONS ARE IN MILLIMETERS TOLERANCES: ANGULAR: MACH ± 0.5° BEND ± 1.0° X ± 0.3 XX ± 0.3 INTERPRET GEOMETRIC TOLERANCING PER ASME Y14.5M MATERIAL: FINISH: DO NOT SCALE	DRAWN: JPW CHECKED: ENG APPR.: MEG APPR.: G.A.: COMMENTS:	NAME: JPW DATE: 7/3/2024
---	--	-----------------------------



TITLE: INSTALLATION DIMENSIONS M4105A4.5, 50HZ 3PH LSA 44.3 VL14			
SIZE: D	PART NO: M4105A4	DWG. NO: D-5611	REV:
SCALE: 1:10	WEIGHT: SEE TABLE	SHEET 1 OF 1	